

*HIGH-EFFICIENCY,
COMFORTNET™-COMPATIBLE,
SPLIT SYSTEM AIR CONDITIONER
UP TO 17 SEER*



■ **Contents**

Nomenclature 2
 Product Specifications 3
 Expanded Cooling Data 4
 AHRI Ratings..... 20
 Dimensions 34
 Wiring Diagram 35
 Accessories..... 36

■ **Standard Features**

- Two-Stage Copeland® Ultra-Tech scroll compressor
- High-density foam compressor sound blanket
- ComfortNet™ Communications System compatible
- Advanced Copeland® CoreSense™ technology
- High-efficiency PSC or ECM condenser fan motor
- In communicating mode, two low-voltage wires to outdoor unit required
- Diagnostic indicator lights and fault code storage
- Color-coded terminal strip
- Factory-installed filter drier
- Coil and ambient temperature sensors
- Sweat connection service valves with easy access to gauge ports
- AHRI Certified; ETL Listed





■ **Cabinet Features**

- Heavy-gauge galvanized-steel cabinet with grille-style sound control top design
- Custom Nickel Gray powder-paint finish
- 500-hour salt-spray tested
- Wire fan discharge grille
- Steel louver coil guard
- Top and side maintenance access
- Single-panel access to controls with space provided for field-installed accessories
- When properly anchored, meets the 2010 Florida Building Code unit integrity requirements for hurricane-type winds (Anchor bracket kits available.)



* Complete warranty details available from your local dealer or at www.daikincomfort.com. To receive the 12-Year Unit Replacement Limited Warranty and 12-Year Parts Limited Warranty, online registration must be completed within 60 days of installation. Additional requirements for annual maintenance are required for the Unit Replacement Limited Warranty. Online registration and some of the additional requirements are not required in California or Quebec.

	D	X	16	T	C	036	1	AA									
	1	2	3,4	5	6	7,8,9	10	11,12									
Brand	1		2		3,4		5		6		7,8,9		10		11,12		Engineering
D - Daikin																	Major & Minor revisions * Not used for inventory control.
Type	1		2		3,4		5		6		7,8,9		10		11,12		Voltage
X - AC R-410A Z - HP R-410A																	1 - 208/230 V Single-Phase 60 Hz
SEER	1		2		3,4		5		6		7,8,9		10		11,12		Nominal Tonnage
13 - 13 SEER 14 - 14 SEER 16 - 16 SEER	18 - 18 SEER		20 - 20 SEER														018 - 1½ tons 024 - 2 tons 030 - 2½ tons 036 - 3 tons
Compressor	1		2		3,4		5		6		7,8,9		10		11,12		Feature Set
S - Single Stage T - Two Stage																	A - Base C - ComfortNet 4-Wire Ready
																	D - Deluxe N - Nominal

	DX16TC 0241C*	DX16TC 0361C*	DX16TC 0481C*	DX16TC 0601C*
COOLING CAPACITY				
Nominal Cooling (BTU/h)	24,000	36,000	48,000	60,000
Decibels	71/70	71/70	72/71	74/70
COMPRESSOR				
RLA	10.0	14.8	20.4	22.9
LRA	62.9	84.2	122.1	147.2
CONDENSER FAN MOTOR				
Horsepower (RPM)	1/6	1/6	1/6	1/3
FLA	1.1	1.2	1.2	2.8
REFRIGERATION SYSTEM				
Refrigerant Line Size				
Liquid Line Size ("O.D.)	3/8"	3/8"	3/8"	3/8"
Suction Line Size ("O.D.)	3/4"	7/8"	1 1/8"	1 1/8"
Refrigerant Connection Size				
Liquid Valve Size ("O.D.)	3/8"	3/8"	3/8"	3/8"
Suction Valve Size ("O.D.)	3/4"	3/4"	7/8"	7/8"
Valve Connection Type	Sweat	Sweat	Sweat	Sweat
Refrigerant Charge	92	114	177	191
ELECTRICAL DATA				
Voltage-Phase-Hz	208/230-1	208/230-1-60	208/230-1-60	208/230-1-60
Minimum Circuit Ampacity ²	13.6	19.7	26.7	31.4
Max. Overcurrent Protection ³	20	30	45	50
Min / Max Volts	197/253	197/253	197/253	197/253
Power Supply	1/2" or 3/4"	1/2" or 3/4"	1/2" or 3/4"	1/2" or 3/4"
EQUIPMENT WEIGHT (LBS)				
	180	201	263	304
SHIP WEIGHT (LBS)				
	197	223	285	326
ENERGY STAR® CERTIFIED				
				

^ ENERGY STAR NOTES

- Proper sizing and installation of equipment is critical to achieving optimal performance. Split system air conditioners and heat pumps must be matched with appropriate coil components to meet ENERGY STAR criteria. Ask your contractor for details or visit www.energystar.gov.
- The www.energystar.gov website provides up-to-date system combinations certified to meet ENERGY STAR requirements. See Pages 20 for all ENERGY STAR certified combinations as of this document's revision date.

¹ Tested and rated in accordance with AHRI Standard 210/240

² Wire size should be determined in accordance with National Electrical Codes; extensive wire runs will require larger wire sizes

³ Must use time-delay fuses or HACR-type circuit breakers of the same size as noted.

NOTES

- Always check the S&R plate for electrical data on the unit being installed.
- Installer will need to supply 7/8" to 1 1/8" adapters for suction line connections.
- Unit is charged with refrigerant for 15' of 3/8" liquid line. System charge must be adjusted per Installation Instructions Final Charge Procedure.
- Installation of these units requires the specified TXV Kit to be installed on the indoor coil. THE SPECIFIED TXV IS DETERMINED BY THE OUTDOOR UNIT NOT THE INDOOR COIL.

EXPANDED COOLING DATA — DX16TC0361C*+CA*F3137*6A*+EEP+TXV - LOW STAGE

IDB		OUTDOOR AMBIENT TEMPERATURE										ENTERING INDOOR WET BULB TEMPERATURE																			
		65°F					75°F					85°F					95°F					105°F					115°F				
		59	63	67	71	75	59	63	67	71	75	59	63	67	71	75	59	63	67	71	75	59	63	67	71	75	59	63	67	71	75
700	MBh	25.9	26.2	27.0	28.2	25.6	26.0	26.8	27.9	23.8	24.2	24.9	26.1	22.4	22.7	23.5	24.7	21.1	21.5	22.2	23.4										
	S/T	1.00	0.80	0.66	0.51	1.00	0.80	0.67	0.52	1.00	0.83	0.69	0.55	1.00	1.00	0.73	0.59	1.00	1.00	0.79	0.64										
	ΔT	28	26	23	19	28	26	23	19	28	26	23	19	28	26	22	19	29	27	23	20										
	Lo PR	126	127	131	136	133	135	138	144	140	142	145	150	146	147	151	156	151	153	156	161										
	Hi PR	234	235	237	241	271	272	274	278	310	311	312	316	351	352	354	358	396	397	399	403										
800	Amps	4.5	4.5	4.5	4.5	5.1	5.1	5.1	5.2	5.8	5.8	5.8	5.9	6.6	6.6	6.6	6.6	7.4	7.4	7.4	7.5										
	KW	1.29	1.29	1.29	1.30	1.44	1.44	1.43	1.45	1.60	1.60	1.60	1.61	1.77	1.77	1.77	1.78	1.97	1.97	1.98	2.21										
	MBh	26.2	26.6	27.3	28.5	26.0	26.3	27.1	28.3	24.1	24.5	25.3	26.4	22.7	23.1	23.9	25.0	21.4	21.8	22.6	23.7										
	S/T	1.00	0.86	0.72	0.57	1.00	0.86	0.73	0.58	1.00	0.89	0.75	0.61	1.00	1.00	0.77	0.63	1.00	1.00	0.85	0.70										
	ΔT	27	25	21	18	27	25	21	18	27	25	22	18	27	25	21	18	28	26	22	19										
900	Lo PR	128	129	132	138	135	137	140	145	142	144	147	152	148	149	152	158	160	162	165	170										
	Hi PR	236	237	239	243	273	274	276	280	312	313	314	318	353	354	356	360	398	399	401	405										
	Amps	4.5	4.5	4.5	4.6	5.2	5.2	5.1	5.2	5.9	5.9	5.8	5.9	6.6	6.6	6.6	6.7	7.5	7.5	7.5	8.5										
	KW	1.30	1.30	1.30	1.31	1.45	1.44	1.44	1.45	1.61	1.61	1.60	1.61	1.78	1.78	1.78	1.79	1.98	1.98	1.98	2.21										
	MBh	26.6	27.0	27.7	28.9	26.4	26.7	27.5	28.7	24.5	24.9	25.7	26.8	23.1	23.5	24.3	25.4	21.8	22.2	23.0	24.1										

700	MBh	26.3	26.6	27.4	28.6	26.1	26.4	27.2	28.4	25.4	25.7	26.5	27.7	24.2	24.6	25.4	26.5	22.8	23.2	23.9	25.1
	S/T	1.00	0.90	0.76	0.62	1.00	1.00	0.77	0.62	1.00	1.00	0.85	0.71	1.00	1.00	0.87	0.73	1.00	1.00	0.84	0.69
	ΔT	31	30	26	23	31	30	26	23	32	30	26	23	31	30	26	23	31	29	26	22
	Lo PR	128	129	132	138	135	137	140	145	142	144	147	152	148	149	152	158	163	160	162	165
	Hi PR	235	236	238	242	272	273	275	279	311	312	313	318	352	353	355	359	397	398	400	404
800	Amps	4.5	4.5	4.5	4.5	5.1	5.1	5.1	5.2	5.8	5.8	5.8	5.9	6.6	6.6	6.6	6.7	7.4	7.4	7.4	7.5
	KW	1.30	1.29	1.29	1.30	1.44	1.44	1.44	1.45	1.60	1.60	1.60	1.61	1.78	1.78	1.77	1.78	1.97	1.97	1.98	2.21
	MBh	26.6	27.0	27.8	28.9	26.4	26.8	27.5	28.7	25.7	26.1	26.9	28.0	24.6	24.9	25.7	26.9	23.2	23.5	24.3	25.5
	S/T	1.00	0.96	0.82	0.68	1.00	1.00	0.83	0.68	1.00	1.00	0.85	0.71	1.00	1.00	0.87	0.73	1.00	1.00	0.84	0.75
	ΔT	30	28	25	22	30	28	25	21	31	29	25	22	30	28	25	21	30	28	25	21
900	Lo PR	130	131	134	140	137	139	142	147	144	145	149	154	149	151	154	160	155	157	160	165
	Hi PR	237	238	240	244	274	275	277	281	313	314	315	320	354	355	357	361	399	400	402	406
	Amps	4.5	4.5	4.5	4.6	5.2	5.2	5.2	5.2	5.9	5.9	5.9	5.9	6.6	6.6	6.6	6.7	7.5	7.5	7.5	8.5
	KW	1.30	1.30	1.30	1.31	1.45	1.45	1.44	1.46	1.61	1.61	1.61	1.62	1.78	1.78	1.78	1.79	1.98	1.98	1.98	2.22
	MBh	27.0	27.4	28.2	29.3	26.8	27.2	27.9	29.1	26.1	26.5	27.3	28.4	25.0	25.3	26.1	27.3	23.6	23.9	24.7	25.9

IDB = Entering Indoor Dry Bulb Temperature
 High and low pressures are measured at the liquid and suction service valves.
 Shaded area reflects AHRl (TVA) conditions
 Amps = outdoor unit amps (comp.+fan)
 kW = Total system power



ENERGY STAR-CERTIFIED COMBINATIONS [^]

OUTDOOR UNIT	INDOOR UNITS		COOLING RATINGS				CFM	AHRI #
	COILS/AIR HANDLERS	FURNACES	TOTAL ¹	SENS. ¹	SEER ²	EER ³		
DX16TC 0241C*	CA*F3636*6A*+TXV	D*96VC0803BNA*	23,000	17,700	16.0	13.0	820	10492725
	CA*F3636*6D*+TXV	D*80VC0604B*A*	23,000	17,700	16.0	13.0	820	10492651
	DV29PTCB14A*		23,600	17,900	16.0	13.0	800	10492628
DX16TC 0361C*	CA*F3137B6A*+TXV	D*80VC604B*A*	34,400	26,400	16.0	13.0	1,100	10492824
	CA*F3137B6A*+TXV	D*96VC0803BNA*	34,000	25,100	16.0	13.0	1,110	10492933
	DV31PTCC14A*		34,400	25,100	16.0	13.0	1,130	10492782
DX16TC 0481C*	CA*F4961*6D*+TXV	D*80VC805C*A*	48,000	34,500	16.0	13.0	1,410	10493077
	CA*F4961*6D*+TXV	D*96VC1005CNA*	48,000	35,000	16.0	13.0	1,440	10493102
	DV49PTCD14A*		47,500	34,200	16.0	13.0	1,460	10493053
DX16TC 0601C*	CA*F4961*6D*+TXV	MBVC2000** ⁻ -1A*	58,000	42,900	17.0	13.0	1,720	10510410
	DV61PTCD14A*		56,500	40,600	16.5	13.0	1,660	10510409

[^] Proper sizing and installation of equipment is critical to achieving optimal performance. Split system air conditioners and heat pumps must be matched with appropriate coil components to meet ENERGY STAR criteria. Ask your contractor for details or visit www.energystar.gov. The www.energystar.gov website provides up to date system combinations certified to meet ENERGY STAR requirements.

¹ BTU/h

² Seasonal Energy Efficiency Ratio; Certified per AHRI 210/240 @ 80°F/ 67°F/ 95°F

³ Energy Efficiency Ratio @ 80°F/ 67°F/ 95°F

NOTES

- Always check the S&R plate for electrical data on the unit being installed.
- When matching the outdoor unit to the indoor unit, use the piston supplied with the outdoor unit or that specified on the piston kit chart supplied with the indoor unit.
- EEP - Order from Service Dept. Part No. B13707-38 or new Solid State Board B13707-35S. Part No. B13707-38 is not interchangeable with B13707-35S. The Daikin Gas Furnace contains the EEP cooling time delay

OUTDOOR UNIT	INDOOR UNITS		COOLING RATINGS				CFM	AHRI #
	COILS/AIR HANDLERS	FURNACES	TOTAL ¹	SENS. ¹	SEER ²	EER ³		
DX16TC 0241C*	CA*F3137*6A*+EEP+TXV		23,400	17,700	14	12.2	800	10492623
	CA*F3137*6A*+MBVC1200**-1A*+TXV		24,000	18,700	16.5	13.5	820	10492632
	CA*F3137*6A*+TXV	D*80VC0603B*A*	24,000	18,700	16.5	13.5	810	10492640
	CA*F3137*6A*+TXV	D*80VC0604B*A*	24,000	18,700	16.5	13.5	820	10492650
	CA*F3137*6A*+TXV	D*80VC0803B*A*	24,000	18,700	16.5	13.5	840	10492660
	CA*F3137*6A*+TXV	D*96VC0403BNA*	23,000	17,900	16.5	13	810	10492694
	CA*F3137*6A*+TXV	D*96VC0603BNA*	23,000	17,900	16.5	13	820	10492704
	CA*F3137*6A*+TXV	D*97MC0603BNA*	23,000	17,900	16.5	13	820	10492714
	CA*F3137*6A*+TXV	D*96VC0803BNA*	23,000	17,900	16.5	13	820	10492724
	CA*F3137*6A*+TXV	D*97MC0803BNA*	23,000	17,900	16.5	13	820	10492734
	CA*F3636*6D*+MBVC1200**-1A*+TXV		23,000	17,700	16	13	820	10492633
	CA*F3636*6D*+TXV	D*96VE0303ANA*	23,800	18,300	16.0	13.0	800	10516444
	CA*F3636*6D*+TXV	D*96VE0403ANA*	23,800	18,300	16.0	13.0	800	10516446
	CA*F3636*6D*+TXV	D*96VE0303ANA*	23,600	18,000	16.0	13.0	800	10516609
	CA*F3636*6D*+TXV	D*96VE0403ANA*	23,600	18,000	16.0	13.0	800	10516606
	CA*F3636*6D*+TXV	D*96VE0603ANA*	23,400	17,900	16.0	13.0	775	10516603
	CA*F3636*6D*+TXV	D*80VC0603B*A*	23,000	17,700	16	13	810	10492641
	CA*F3636*6D*+TXV	D*80VC0604B*A*	23,000	17,700	16	13	820	10492651
	CA*F3636*6D*+TXV	D*80VC0803B*A*	23,000	17,700	16	13	840	10492661
	CA*F3636*6D*+TXV	D*80VC0804C*A*	23,000	17,700	16	13	830	10492670
	CA*F3636*6D*+TXV	D*80VC0805C*A*	23,000	18,100	16	13	860	10492678
	CA*F3636*6D*+TXV	D*80VC1005C*A*	23,000	18,100	16	13	860	10492686
	CA*F3636*6D*+TXV	D*96VC0403BNA*	23,000	17,700	16	13	810	10492695
	CA*F3636*6D*+TXV	D*96VC0603BNA*	23,000	17,700	16	13	820	10492705
	CA*F3636*6D*+TXV	D*97MC0603BNA*	23,000	17,700	16	13	820	10492715
	CA*F3636*6D*+TXV	D*96VC0803BNA*	23,000	17,700	16	13	820	10492725
	CA*F3636*6D*+TXV	D*97MC0803BNA*	23,000	17,700	16	13	820	10492735
	CA*F3636*6D*+TXV	D*96VC0804CNA*	23,000	17,700	16	13	810	10492744
	CA*F3636*6D*+TXV	D*97MC0804CNA*	23,000	17,700	16	13	810	10492752
	CA*F3636*6D*+TXV	D*96VC1005CNA*	23,000	17,700	16	13	820	10492760
	CA*F3636*6D*+TXV	D*97MC1005CNA*	23,000	17,700	16	13	820	10492768
	CA*F3642*6D*+EEP+TXV		23,000	17,700	14	12.2	820	10492624
	CA*F3642*6D*+MBVC1200**-1A*+TXV		23,600	18,100	16	13	820	10492634
	CA*F3642*6D*+TXV	D*80VC0603B*A*	23,600	18,100	16	13	810	10492642
	CA*F3642*6D*+TXV	D*80VC0604B*A*	23,600	18,100	16	13	820	10492652
	CA*F3642*6D*+TXV	D*80VC0803B*A*	23,600	18,100	16	13	840	10492662
	CA*F3642*6D*+TXV	D*80VC0804C*A*	23,600	18,100	16	13	830	10492671
	CA*F3642*6D*+TXV	D*80VC0805C*A*	23,600	18,600	16	13	870	10492679
	CA*F3642*6D*+TXV	D*80VC1005C*A*	23,600	18,600	16	13	860	10492687
	CA*F3642*6D*+TXV	D*96VC0403BNA*	23,600	18,100	16	13	810	10492696
	CA*F3642*6D*+TXV	D*96VC0603BNA*	23,600	18,100	16	13	820	10492706
	CA*F3642*6D*+TXV	D*97MC0603BNA*	23,600	18,100	16	13	820	10492716
CA*F3642*6D*+TXV	D*96VC0803BNA*	23,600	18,100	16	13	820	10492726	
CA*F3642*6D*+TXV	D*97MC0803BNA*	23,600	18,100	16	13	820	10492736	
CA*F3642*6D*+TXV	D*96VC0804CNA*	23,600	18,100	16	13	810	10492745	
CA*F3642*6D*+TXV	D*97MC0804CNA*	23,600	18,100	16	13	810	10492753	
CA*F3642*6D*+TXV	D*96VC1005CNA*	23,600	18,100	16	13	820	10492761	

See Notes on Page 33.

OUTDOOR UNIT	INDOOR UNITS		COOLING RATINGS				CFM	AHRI #
	COILS/AIR HANDLERS	FURNACES	TOTAL ¹	SENS. ¹	SEER ²	EER ³		
DX16TC 0241C* (cont.)	CA*F3642*6D*+TXV	D*97MC1005CNA*	23,600	18,100	16	13	820	10492769
	CA*F3743*6D*+TXV	D*80VC0603B*A*	23,600	18,100	16	13	810	10492643
	CA*F3743*6D*+TXV	D*80VC0604B*A*	23,600	18,100	16	13	820	10492653
	CA*F3743*6D*+TXV	D*80VC0803B*A*	23,600	18,100	16	13	840	10492663
	CA*F3743*6D*+TXV	D*80VC0804C*A*	23,600	18,100	16	13	830	10492672
	CA*F3743*6D*+TXV	D*80VC0805C*A*	23,600	18,600	16	13	870	10492680
	CA*F3743*6D*+TXV	D*80VC1005C*A*	23,600	18,600	16	13	860	10492688
	CA*F3743*6D*+TXV	D*96VC0403BNA*	23,600	18,100	16	13	810	10492697
	CA*F3743*6D*+TXV	D*96VC0603BNA*	23,600	18,100	16	13	820	10492707
	CA*F3743*6D*+TXV	D*97MC0603BNA*	23,600	18,100	16	13	820	10492717
	CA*F3743*6D*+TXV	D*96VC0803BNA*	23,600	18,100	16	13	820	10492727
	CA*F3743*6D*+TXV	D*97MC0803BNA*	23,600	18,100	16	13	820	10492737
	CA*F3743*6D*+TXV	D*96VC0804CNA*	23,600	18,100	16.5	13.5	810	10492746
	CA*F3743*6D*+TXV	D*97MC0804CNA*	23,600	18,100	16.5	13.5	810	10492754
	CA*F3743*6D*+TXV	D*96VC1005CNA*	23,600	18,100	16.5	13.5	820	10492762
	CA*F3743*6D*+TXV	D*97MC1005CNA*	23,600	18,100	16.5	13.5	820	10492770
	CAPT3743*4A*	D*96VE0303ANA*	23,800	18,200	16.0	13.0	800	10516611
	CAPT3743*4A*	D*96VE0403ANA*	23,800	18,200	16.0	13.0	800	10516608
	CAPT3743*4A*	D*96VE0603ANA*	23,600	18,000	16.0	13.0	775	10516605
	CAPT3743*4A*	D*80VC0603B*A*	23,600	18,100	16	13	810	10492644
	CAPT3743*4A*	D*80VC0604B*A*	23,000	17,700	16	13	820	10492654
	CAPT3743*4A*	D*80VC0803B*A*	23,600	18,100	16	13	840	10492664
	CAPT3743*4A*	D*80VC0804C*A*	23,600	18,100	16	13	830	10492673
	CAPT3743*4A*	D*80VC0805C*A*	23,600	18,600	16	13	870	10492681
	CAPT3743*4A*	D*80VC1005C*A*	23,600	18,600	16	13	860	10492689
	CAPT3743*4A*	D*96VC0403BNA*	23,600	18,100	16	13	810	10492698
	CAPT3743*4A*	D*96VC0603BNA*	23,600	18,100	16	13	820	10492708
	CAPT3743*4A*	D*97MC0603BNA*	23,600	18,100	16	13	820	10492718
	CAPT3743*4A*	D*96VC0803BNA*	23,600	18,100	16	13	820	10492728
	CAPT3743*4A*	D*97MC0803BNA*	23,600	18,100	16	13	820	10492738
	CAPT3743*4A*	D*96VC0804CNA*	23,600	18,100	16	13	810	10492747
	CAPT3743*4A*	D*97MC0804CNA*	23,600	18,100	16	13	810	10492755
	CAPT3743*4A*	D*96VC1005CNA*	23,000	17,700	16	13	820	10492763
	CAPT3743*4A*	D*97MC1005CNA*	23,000	17,700	16	13	820	10492771
	CHPF3636B6C*+EEP+TXV		23,000	17,700	14	12.2	820	10492625
	CHPF3636B6C*+MBVC1200**-1A*+TXV		23,600	18,400	16	13	820	10492635
	CHPF3636B6C*+TXV	D*96VE0303ANA*	24,000	18,400	15.0	12.5	750	10516445
	CHPF3636B6C*+TXV	D*96VE0403ANA*	24,000	18,400	15.0	12.5	750	10516447
	CHPF3636B6C*+TXV	D*96VE0303ANA*	24,000	18,300	16.0	13.0	800	10516610
	CHPF3636B6C*+TXV	D*96VE0403ANA*	24,000	18,300	16.0	13.0	800	10516607
	CHPF3636B6C*+TXV	D*96VE0603ANA*	23,800	18,200	16.0	13.0	775	10516604
	CHPF3636B6C*+TXV	D*80VC0603B*A*	23,600	18,400	16	13	810	10492645
	CHPF3636B6C*+TXV	D*80VC0604B*A*	23,000	17,900	16	13	820	10492655
	CHPF3636B6C*+TXV	D*80VC0803B*A*	23,600	18,100	16	13	840	10492665
	CHPF3636B6C*+TXV	D*96VC0403BNA*	23,600	18,100	16	13	810	10492699
CHPF3636B6C*+TXV	D*96VC0603BNA*	23,600	18,100	16	13	820	10492709	
CHPF3636B6C*+TXV	D*97MC0603BNA*	23,600	18,100	16	13	820	10492719	

See Notes on Page 33.

OUTDOOR UNIT	INDOOR UNITS		COOLING RATINGS				CFM	AHRI #
	COILS/AIR HANDLERS	FURNACES	TOTAL ¹	SENS. ¹	SEER ²	EER ³		
DX16TC 0241C* (cont.)	CHPF3636B6C*+TXV	D*96VC0803BNA*	23,600	18,100	16	13	820	10492729
	CHPF3636B6C*+TXV	D*97MC0803BNA*	23,600	18,100	16	13	820	10492739
	CHPF3642C6C*+EEP+TXV		23,000	17,700	14	12.2	820	10492626
	CHPF3642C6C*+MBVC1200**-1A*+TXV		23,600	18,400	16	13	820	10492636
	CHPF3642C6C*+TXV	D*80VC0603B*A*	23,600	18,400	16	13	810	10492646
	CHPF3642C6C*+TXV	D*80VC0604B*A*	23,000	17,900	16	13	820	10492656
	CHPF3642C6C*+TXV	D*80VC0803B*A*	23,600	18,100	16	13	840	10492666
	CHPF3642C6C*+TXV	D*80VC0804C*A*	23,600	18,400	16	13	830	10492674
	CHPF3642C6C*+TXV	D*80VC0805C*A*	23,600	18,600	16	13	870	10492682
	CHPF3642C6C*+TXV	D*80VC1005C*A*	23,600	18,600	16	13	860	10492690
	CHPF3642C6C*+TXV	D*96VC0403BNA*	23,600	18,100	16	13	810	10492700
	CHPF3642C6C*+TXV	D*96VC0603BNA*	23,600	18,100	16	13	820	10492710
	CHPF3642C6C*+TXV	D*97MC0603BNA*	23,600	18,100	16	13	820	10492720
	CHPF3642C6C*+TXV	D*96VC0803BNA*	23,600	18,100	16	13	820	10492730
	CHPF3642C6C*+TXV	D*97MC0803BNA*	23,600	18,100	16	13	820	10492740
	CHPF3642C6C*+TXV	D*96VC0804CNA*	23,600	18,400	16	13	810	10492748
	CHPF3642C6C*+TXV	D*97MC0804CNA*	23,600	18,400	16	13	810	10492756
	CHPF3642C6C*+TXV	D*96VC1005CNA*	23,600	18,400	16	13	820	10492764
	CHPF3642C6C*+TXV	D*97MC1005CNA*	23,600	18,400	16	13	820	10492772
	CHPF3743C6B*+MBVC1200**-1A*+TXV		24,000	18,700	16	13	820	10492637
	CHPF3743C6B*+TXV	D*80VC0603B*A*	24,000	18,700	16	13	810	10492647
	CHPF3743C6B*+TXV	D*80VC0604B*A*	24,000	18,700	16	13	820	10492657
	CHPF3743C6B*+TXV	D*80VC0803B*A*	24,000	18,700	16	13	840	10492667
	CHPF3743C6B*+TXV	D*80VC0804C*A*	24,000	18,700	16	13	830	10492675
	CHPF3743C6B*+TXV	D*80VC0805C*A*	24,000	18,900	16	13	870	10492683
	CHPF3743C6B*+TXV	D*80VC1005C*A*	24,000	18,900	16	13	860	10492691
	CHPF3743C6B*+TXV	D*96VC0403BNA*	24,000	18,700	16	13	810	10492701
	CHPF3743C6B*+TXV	D*96VC0603BNA*	24,000	18,700	16	13	820	10492711
	CHPF3743C6B*+TXV	D*97MC0603BNA*	24,000	18,700	16	13	820	10492721
	CHPF3743C6B*+TXV	D*96VC0803BNA*	24,000	18,700	16	13	820	10492731
	CHPF3743C6B*+TXV	D*97MC0803BNA*	24,000	18,700	16	13	820	10492741
	CHPF3743C6B*+TXV	D*96VC0804CNA*	23,600	18,400	16	13	810	10492749
	CHPF3743C6B*+TXV	D*97MC0804CNA*	23,600	18,400	16	13	810	10492757
	CHPF3743C6B*+TXV	D*96VC1005CNA*	23,600	18,400	16	13	820	10492765
	CHPF3743C6B*+TXV	D*97MC1005CNA*	23,600	18,400	16	13	820	10492773
	CSCF3036N6D*+MBVC1200**-1A*+TXV		23,000	17,900	16	13	820	10492638
	CSCF3036N6D*+TXV	D*80VC0603B*A*	23,000	17,900	16	13	810	10492648
	CSCF3036N6D*+TXV	D*80VC0604B*A*	23,000	17,900	16	13	820	10492658
	CSCF3036N6D*+TXV	D*80VC0803B*A*	23,000	17,900	16	13	840	10492668
	CSCF3036N6D*+TXV	D*80VC0804C*A*	23,000	17,900	16	13	830	10492676
	CSCF3036N6D*+TXV	D*80VC0805C*A*	23,000	18,100	16	13	860	10492684
	CSCF3036N6D*+TXV	D*80VC1005C*A*	23,000	18,100	16	13	860	10492692
CSCF3036N6D*+TXV	D*96VC0403BNA*	23,000	17,900	16	13	810	10492702	
CSCF3036N6D*+TXV	D*96VC0603BNA*	23,000	17,900	16	13	820	10492712	
CSCF3036N6D*+TXV	D*97MC0603BNA*	23,000	17,900	16	13	820	10492722	
CSCF3036N6D*+TXV	D*96VC0803BNA*	23,000	17,900	16	13	820	10492732	
CSCF3036N6D*+TXV	D*97MC0803BNA*	23,000	17,900	16	13	820	10492742	

See Notes on Page 33.

OUTDOOR UNIT	INDOOR UNITS		COOLING RATINGS				CFM	AHRI #
	COILS/AIR HANDLERS	FURNACES	TOTAL ¹	SENS. ¹	SEER ²	EER ³		
DX16TC 0241C* (cont.)	CSCF3036N6D*+TXV	D*96VC0804CNA*	23,000	17,900	16	13	810	10492750
	CSCF3036N6D*+TXV	D*97MC0804CNA*	23,000	17,900	16	13	810	10492758
	CSCF3036N6D*+TXV	D*96VC1005CNA*	23,000	17,900	16	13	820	10492766
	CSCF3036N6D*+TXV	D*97MC1005CNA*	23,000	17,900	16	13	820	10492774
	CSCF3642N6D*+MBVC1200**-1A*+TXV		24,000	18,700	16.5	13.5	820	10492639
	CSCF3642N6D*+TXV	D*80VC0603B*A*	24,000	18,700	16.5	13.5	810	10492649
	CSCF3642N6D*+TXV	D*80VC0604B*A*	24,000	18,700	16.5	13.5	820	10492659
	CSCF3642N6D*+TXV	D*80VC0803B*A*	24,000	18,700	16	13	840	10492669
	CSCF3642N6D*+TXV	D*80VC0804C*A*	24,000	18,700	17	13.5	830	10492677
	CSCF3642N6D*+TXV	D*80VC0805C*A*	24,000	19,200	17	13.5	870	10492685
	CSCF3642N6D*+TXV	D*80VC1005C*A*	24,000	19,200	16	13	860	10492693
	CSCF3642N6D*+TXV	D*96VC0403BNA*	24,000	18,700	16	13	810	10492703
	CSCF3642N6D*+TXV	D*96VC0603BNA*	24,000	18,700	16	13	820	10492713
	CSCF3642N6D*+TXV	D*97MC0603BNA*	24,000	18,700	16	13	820	10492723
	CSCF3642N6D*+TXV	D*96VC0803BNA*	24,000	18,700	16	13	820	10492733
	CSCF3642N6D*+TXV	D*97MC0803BNA*	24,000	18,700	16	13	820	10492743
	CSCF3642N6D*+TXV	D*96VC0804CNA*	24,000	18,700	17	13.5	810	10492751
	CSCF3642N6D*+TXV	D*97MC0804CNA*	24,000	18,700	17	13.5	810	10492759
	CSCF3642N6D*+TXV	D*96VC1005CNA*	24,000	18,700	16.5	13.5	820	10492767
	CSCF3642N6D*+TXV	D*97MC1005CNA*	24,000	18,700	16.5	13.5	820	10492775
DV25PTCB14A*		23,000	17,900	16	13	860	10492627	
DV29PTCB14A*		23,600	17,900	16	13	800	10492628	
DV31PTCC14A*		24,000	18,900	16.5	13.5	840	10492630	
DV37PTCB14A*		23,600	17,900	16	13	800	10492629	
DV37PTCC14A*		24,000	18,900	16.5	13.5	840	10492631	
DX16TC 0361C*	CA*F3137*6A*+EEP+TXV		34,000	25,100	14	12.2	1100	10492776
	CA*F3137*6A*+MBVC1200**-1A*+TXV		34,400	26,400	16	13	1150	10492788
	CA*F3137*6A*+TXV	D*80VC0603B*A*	34,400	25,400	16	13	1100	10492813
	CA*F3137*6A*+TXV	D*80VC0604B*A*	34,400	26,400	16	13	1100	10492824
	CA*F3137*6A*+TXV	D*80VC0803B*A*	34,400	26,100	16	13	1100	10492835
	CA*F3137*6A*+TXV	D*96VC0403BNA*	34,400	25,400	16	13	1080	10492900
	CA*F3137*6A*+TXV	D*96VC0603BNA*	34,000	25,800	15.5	12.5	1140	10492911
	CA*F3137*6A*+TXV	D*97MC0603BNA*	34,000	25,800	15.5	12.5	1140	10492922
	CA*F3137*6A*+TXV	D*96VC0803BNA*	34,000	25,100	16	13	1110	10492933
	CA*F3137*6A*+TXV	D*97MC0803BNA*	34,000	25,100	16	13	1110	10492944
	CA*F3636*6D*+MBVC1200**-1A*+TXV		34,000	25,800	15	12.5	1150	10492789
	CA*F3636*6D*+MBVC1600**-1A*+TXV		33,400	24,700	15	12.5	1175	10492799
	CA*F3636*6D*+TXV	D*80VC0603B*A*	33,400	24,700	15	12.5	1100	10492814
	CA*F3636*6D*+TXV	D*80VC0604B*A*	33,400	25,300	15	12.5	1100	10492825
	CA*F3636*6D*+TXV	D*80VC0803B*A*	33,400	25,300	15	12.5	1100	10492836
	CA*F3636*6D*+TXV	D*80VC0804C*A*	33,400	25,300	15	12.5	1100	10492846
	CA*F3636*6D*+TXV	D*80VC0805C*A*	33,400	25,300	15	12.5	1100	10492860
	CA*F3636*6D*+TXV	D*80VC0805D*A*	33,400	24,700	15.5	12.5	1100	10492874
	CA*F3636*6D*+TXV	D*80VC1005C*A*	33,600	25,500	15.5	12.5	1150	10492886
	CA*F3636*6D*+TXV	D*96VC0403BNA*	33,400	24,700	15	12.5	1080	10492901
CA*F3636*6D*+TXV	D*96VC0603BNA*	33,400	25,300	15	12.5	1140	10492912	
CA*F3636*6D*+TXV	D*97MC0603BNA*	33,400	25,300	15	12.5	1140	10492923	

See Notes on Page 33.

OUTDOOR UNIT	INDOOR UNITS		COOLING RATINGS				CFM	AHRI #
	COILS/AIR HANDLERS	FURNACES	TOTAL ¹	SENS. ¹	SEER ²	EER ³		
DX16TC 0361C* (cont.)	CA*F3636*6D*+TXV	D*96VC0803BNA*	33,400	24,700	15	12.5	1110	10492934
	CA*F3636*6D*+TXV	D*97MC0803BNA*	33,400	24,700	15	12.5	1110	10492945
	CA*F3636*6D*+TXV	D*96VC0804CNA*	33,400	24,700	15.5	12.5	1130	10492955
	CA*F3636*6D*+TXV	D*97MC0804CNA*	33,400	24,700	15.5	12.5	1130	10492969
	CA*F3636*6D*+TXV	D*96VC1005CNA*	33,400	25,300	15.5	12.5	1120	10492983
	CA*F3636*6D*+TXV	D*97MC1005CNA*	33,400	25,300	15.5	12.5	1120	10492997
	CA*F3636*6D*+TXV	D*96VC1005DNA*	33,400	25,300	15.5	12.5	1120	10493011
	CA*F3636*6D*+TXV	D*97MC1205DNA*	33,400	25,300	15.5	12.5	1160	10493023
	CA*F3636*6D*+TXV	D*96VC1205DNA*	33,400	25,300	15.5	12.5	1160	10493035
	CA*F3642*6D*+MBVC1200**-1A*+TXV		34,000	25,800	16	12.5	1150	10492790
	CA*F3642*6D*+MBVC1600**-1A*+TXV		34,000	25,800	16	13	1175	10492800
	CA*F3642*6D*+TXV	D*80VC0603B*A*	34,000	25,800	15.5	12.5	1100	10492815
	CA*F3642*6D*+TXV	D*80VC0604B*A*	34,000	25,800	15.5	12.5	1100	10492826
	CA*F3642*6D*+TXV	D*80VC0803B*A*	34,000	25,500	15.5	12.5	1100	10492837
	CA*F3642*6D*+TXV	D*80VC0804C*A*	34,000	25,800	15.5	12.5	1100	10492847
	CA*F3642*6D*+TXV	D*80VC0805C*A*	34,000	25,800	16	13	1100	10492861
	CA*F3642*6D*+TXV	D*80VC0805D*A*	34,000	25,800	16	13	1100	10492875
	CA*F3642*6D*+TXV	D*80VC1005C*A*	34,000	25,500	16	12.8	1150	10492887
	CA*F3642*6D*+TXV	D*96VC0403BNA*	34,000	25,800	15.5	12.5	1080	10492902
	CA*F3642*6D*+TXV	D*96VC0603BNA*	34,000	25,800	15.5	12.5	1140	10492913
	CA*F3642*6D*+TXV	D*97MC0603BNA*	34,000	25,800	15.5	12.5	1140	10492924
	CA*F3642*6D*+TXV	D*96VC0803BNA*	34,000	25,800	15.5	12.5	1110	10492935
	CA*F3642*6D*+TXV	D*97MC0803BNA*	34,000	25,800	15.5	12.5	1110	10492946
	CA*F3642*6D*+TXV	D*96VC0804CNA*	34,000	25,800	16	13	1130	10492956
	CA*F3642*6D*+TXV	D*97MC0804CNA*	34,000	25,800	16	13	1130	10492970
	CA*F3642*6D*+TXV	D*96VC1005CNA*	34,000	25,500	16	13	1120	10492984
	CA*F3642*6D*+TXV	D*97MC1005CNA*	34,000	25,500	16	13	1120	10492998
	CA*F3642*6D*+TXV	D*96VC1005DNA*	34,000	25,500	16	13	1120	10493012
	CA*F3642*6D*+TXV	D*97MC1205DNA*	34,000	25,500	16	13	1160	10493024
	CA*F3642*6D*+TXV	D*96VC1205DNA*	34,000	25,500	16	13	1160	10493036
	CA*F3743*6D*+EEP+TXV		34,000	25,100	14	12.2	1100	10492777
	CA*F3743*6D*+MBVC1200**-1A*+TXV		34,400	26,100	16	13	1150	10492791
	CA*F3743*6D*+MBVC1600**-1A*+TXV		34,000	25,100	16	13	1175	10492801
	CA*F3743*6D*+TXV	D*80VC0603B*A*	34,400	25,400	16	13	1100	10492816
	CA*F3743*6D*+TXV	D*80VC0604B*A*	34,400	26,100	16	13	1100	10492827
	CA*F3743*6D*+TXV	D*80VC0803B*A*	34,400	26,100	16	13	1100	10492838
	CA*F3743*6D*+TXV	D*80VC0804C*A*	34,400	26,100	16	13	1100	10492848
	CA*F3743*6D*+TXV	D*80VC0805C*A*	34,400	26,100	16	13	1100	10492862
	CA*F3743*6D*+TXV	D*80VC0805D*A*	34,000	25,100	16	13	1100	10492876
	CA*F3743*6D*+TXV	D*80VC1005C*A*	34,400	26,100	16	13	1150	10492888
	CA*F3743*6D*+TXV	D*96VC0403BNA*	34,000	25,100	15.5	12.5	1080	10492903
	CA*F3743*6D*+TXV	D*96VC0603BNA*	34,000	25,500	16	13	1140	10492914
CA*F3743*6D*+TXV	D*97MC0603BNA*	34,000	25,500	16	13	1140	10492925	
CA*F3743*6D*+TXV	D*96VC0803BNA*	34,000	25,100	15.5	12.5	1110	10492936	
CA*F3743*6D*+TXV	D*97MC0803BNA*	34,000	25,100	15.5	12.5	1110	10492947	
CA*F3743*6D*+TXV	D*96VC0804CNA*	34,000	25,100	16	13	1130	10492957	
CA*F3743*6D*+TXV	D*97MC0804CNA*	34,000	25,100	16	13	1130	10492971	

See Notes on Page 33.

OUTDOOR UNIT	INDOOR UNITS		COOLING RATINGS				CFM	AHRI #
	COILS/AIR HANDLERS	FURNACES	TOTAL ¹	SENS. ¹	SEER ²	EER ³		
DX16TC 0361C* (cont.)	CA*F3743*6D*+TXV	D*96VC1005CNA*	34,400	26,100	16	13	1120	10492985
	CA*F3743*6D*+TXV	D*97MC1005CNA*	34,400	26,100	16	13	1120	10492999
	CA*F3743*6D*+TXV	D*96VC1005DNA*	34,400	26,100	16	13	1120	10493013
	CA*F3743*6D*+TXV	D*97MC1205DNA*	34,400	26,100	16	13	1160	10493025
	CA*F3743*6D*+TXV	D*96VC1205DNA*	34,400	26,100	16	13	1160	10493037
	CA*F4860*6D*+EEP+TXV		34,400	25,400	14	12.2	1150	10492778
	CA*F4860*6D*+MBVC1200**-1A*+TXV		34,400	26,100	16	13	1150	10492793
	CA*F4860*6D*+MBVC1600**-1A*+TXV		34,000	25,100	16	13	1175	10492803
	CA*F4860*6D*+TXV	D*80VC0603B*A*	34,400	25,400	16	13	1100	10492818
	CA*F4860*6D*+TXV	D*80VC0604B*A*	34,600	26,200	16	13	1100	10492829
	CA*F4860*6D*+TXV	D*80VC0803B*A*	34,400	25,800	16	12.5	1100	10492840
	CA*F4860*6D*+TXV	D*80VC0804C*A*	34,400	26,100	16	13	1100	10492850
	CA*F4860*6D*+TXV	D*80VC0805C*A*	35,000	26,600	16	13	1100	10492864
	CA*F4860*6D*+TXV	D*80VC0805D*A*	34,400	25,400	16	13	1100	10492878
	CA*F4860*6D*+TXV	D*80VC1005C*A*	34,400	25,800	16	13	1150	10492890
	CA*F4860*6D*+TXV	D*96VC0403BNA*	34,400	25,400	16	13	1080	10492905
	CA*F4860*6D*+TXV	D*96VC0603BNA*	34,400	26,100	16	13	1140	10492916
	CA*F4860*6D*+TXV	D*97MC0603BNA*	34,400	26,100	16	13	1140	10492927
	CA*F4860*6D*+TXV	D*96VC0803BNA*	34,400	25,400	16	13	1110	10492938
	CA*F4860*6D*+TXV	D*97MC0803BNA*	34,400	25,400	16	13	1110	10492949
	CA*F4860*6D*+TXV	D*96VC0804CNA*	34,000	25,100	16	13	1130	10492959
	CA*F4860*6D*+TXV	D*97MC0804CNA*	34,000	25,100	16	13	1130	10492973
	CA*F4860*6D*+TXV	D*96VC1005CNA*	34,400	25,800	16	13	1120	10492987
	CA*F4860*6D*+TXV	D*97MC1005CNA*	34,400	25,800	16	13	1120	10493001
	CA*F4860*6D*+TXV	D*96VC1005DNA*	34,400	25,800	16	13	1120	10493015
	CA*F4860*6D*+TXV	D*97MC1205DNA*	34,400	25,800	16	13	1160	10493027
	CA*F4860*6D*+TXV	D*96VC1205DNA*	34,400	25,800	16	13	1160	10493039
	CA*F4961*6D*+EEP+TXV		34,800	26,400	14	12.2	1150	10492779
	CA*F4961*6D*+MBVC1200**-1A*+TXV		35,000	26,900	16	13	1150	10492794
	CA*F4961*6D*+MBVC1600**-1A*+TXV		35,000	26,900	16	13	1175	10492804
	CA*F4961*6D*+TXV	D*80VC0603B*A*	35,000	26,900	16	13	1100	10492819
	CA*F4961*6D*+TXV	D*80VC0604B*A*	35,000	26,900	16	13	1100	10492830
	CA*F4961*6D*+TXV	D*80VC0803B*A*	35,000	26,900	16	13	1100	10492841
	CA*F4961*6D*+TXV	D*80VC0804C*A*	35,000	26,900	16	13	1100	10492851
	CA*F4961*6D*+TXV	D*80VC0805C*A*	35,400	27,200	16	13	1100	10492865
	CA*F4961*6D*+TXV	D*80VC0805D*A*	35,000	26,900	16	13	1100	10492879
	CA*F4961*6D*+TXV	D*80VC1005C*A*	35,400	27,200	16	13	1150	10492891
	CA*F4961*6D*+TXV	D*96VC0403BNA*	35,000	26,900	16	13	1080	10492906
	CA*F4961*6D*+TXV	D*96VC0603BNA*	35,000	26,900	16	13	1140	10492917
	CA*F4961*6D*+TXV	D*97MC0603BNA*	35,000	26,900	16	13	1140	10492928
CA*F4961*6D*+TXV	D*96VC0803BNA*	35,000	26,900	16	13	1110	10492939	
CA*F4961*6D*+TXV	D*97MC0803BNA*	35,000	26,900	16	13	1110	10492950	
CA*F4961*6D*+TXV	D*96VC0804CNA*	35,000	26,900	16	13	1130	10492960	
CA*F4961*6D*+TXV	D*97MC0804CNA*	35,000	26,900	16	13	1130	10492974	
CA*F4961*6D*+TXV	D*96VC1005CNA*	35,000	26,900	16	13	1120	10492988	
CA*F4961*6D*+TXV	D*97MC1005CNA*	35,000	26,900	16	13	1120	10493002	
CA*F4961*6D*+TXV	D*96VC1005DNA*	35,400	27,200	16	13	1120	10493016	

See Notes on Page 33.

OUTDOOR UNIT	INDOOR UNITS		COOLING RATINGS				CFM	AHRI #
	COILS/AIR HANDLERS	FURNACES	TOTAL ¹	SENS. ¹	SEER ²	EER ³		
DX16TC 0361C* (cont.)	CA*F4961*6D*+TXV	D*97MC1205DNA*	35,400	27,200	16	13	1160	10493028
	CA*F4961*6D*+TXV	D*96VC1205DNA*	35,400	27,200	16	13	1160	10493040
	CAPT3743*4A*	D*80VC0603B*A*	34,400	25,400	16	12.5	1100	10492817
	CAPT3743*4A*	D*80VC0604B*A*	34,400	26,100	16	12.5	1100	10492828
	CAPT3743*4A*	D*80VC0803B*A*	34,400	26,100	16	12.5	1100	10492839
	CAPT3743*4A*	D*80VC0804C*A*	34,400	26,100	16	12.5	1100	10492849
	CAPT3743*4A*	D*80VC0805C*A*	34,400	26,100	16	13	1100	10492863
	CAPT3743*4A*	D*80VC0805D*A*	34,000	25,100	16	12.5	1100	10492877
	CAPT3743*4A*	D*80VC1005C*A*	34,400	26,100	16	13	1150	10492889
	CAPT3743*4A*	D*96VC0403BNA*	34,000	25,100	15.5	12.5	1080	10492904
	CAPT3743*4A*	D*96VC0603BNA*	34,000	25,500	15.5	12.5	1140	10492915
	CAPT3743*4A*	D*97MC0603BNA*	34,000	25,500	15.5	12.5	1140	10492926
	CAPT3743*4A*	D*96VC0803BNA*	34,000	25,100	15.5	12.5	1110	10492937
	CAPT3743*4A*	D*97MC0803BNA*	34,000	25,100	15.5	12.5	1110	10492948
	CAPT3743*4A*	D*96VC0804CNA*	34,000	25,100	16	12.8	1130	10492958
	CAPT3743*4A*	D*97MC0804CNA*	34,000	25,100	16	12.8	1130	10492972
	CAPT3743*4A*	D*96VC1005CNA*	34,400	26,100	16	12.5	1120	10492986
	CAPT3743*4A*	D*97MC1005CNA*	34,400	26,100	16	12.5	1120	10493000
	CAPT3743*4A*	D*96VC1005DNA*	34,400	26,100	16	12.5	1120	10493014
	CAPT3743*4A*	D*97MC1205DNA*	34,400	26,100	16	12.5	1160	10493026
	CAPT3743*4A*	D*96VC1205DNA*	34,400	26,100	16	12.5	1160	10493038
	CAPT3743*4A*+MBVC1200**-1A*		34,000	25,800	16	13	1150	10492792
	CAPT3743*4A*+MBVC1600**-1A*		34,000	25,100	16	13	1175	10492802
	CAPT4961*4A*	D*80VC0603B*A*	35,000	26,900	16	13	1100	10492820
	CAPT4961*4A*	D*80VC0604B*A*	35,000	26,900	16	13	1100	10492831
	CAPT4961*4A*	D*80VC0803B*A*	35,000	26,900	16	13	1100	10492842
	CAPT4961*4A*	D*80VC0804C*A*	35,000	26,900	16	13	1100	10492852
	CAPT4961*4A*	D*80VC0805C*A*	35,000	26,900	16	13	1100	10492866
	CAPT4961*4A*	D*80VC0805D*A*	35,000	26,900	16	13	1100	10492880
	CAPT4961*4A*	D*80VC1005C*A*	35,000	26,900	16	13	1150	10492892
	CAPT4961*4A*	D*96VC0403BNA*	35,000	26,900	16	12.5	1080	10492907
	CAPT4961*4A*	D*96VC0603BNA*	35,000	26,900	16	13	1140	10492918
	CAPT4961*4A*	D*97MC0603BNA*	35,000	26,900	16	13	1140	10492929
	CAPT4961*4A*	D*96VC0803BNA*	34,600	26,600	16	12.5	1110	10492940
	CAPT4961*4A*	D*97MC0803BNA*	34,600	26,600	16	12.5	1110	10492951
	CAPT4961*4A*	D*96VC0804CNA*	35,000	26,900	16	13	1130	10492961
	CAPT4961*4A*	D*97MC0804CNA*	35,000	26,900	16	13	1130	10492975
	CAPT4961*4A*	D*96VC1005CNA*	35,000	26,900	16	13	1120	10492989
	CAPT4961*4A*	D*97MC1005CNA*	35,000	26,900	16	13	1120	10493003
	CAPT4961*4A*	D*96VC1005DNA*	35,000	26,900	16	13	1120	10493017
	CAPT4961*4A*	D*97MC1205DNA*	35,000	26,900	16	13	1160	10493029
	CAPT4961*4A*	D*96VC1205DNA*	35,000	26,900	16	13	1160	10493041
	CAPT4961*4A*+MBVC1200**-1A*		34,600	26,600	16	13	1150	10492795
	CAPT4961*4A*+MBVC1600**-1A*		35,000	26,900	16	13	1175	10492805
	CHPF3636B6C*+MBVC1200**-1A*+TXV		34,000	25,800	15.5	12.5	1150	10492796
	CHPF3636B6C*+TXV	D*80VC0603B*A*	34,000	25,100	15.5	12.5	1100	10492821
	CHPF3636B6C*+TXV	D*80VC0604B*A*	34,000	25,800	15.5	12.5	1100	10492832

See Notes on Page 33.

OUTDOOR UNIT	INDOOR UNITS		COOLING RATINGS				CFM	AHRI #
	COILS/AIR HANDLERS	FURNACES	TOTAL ¹	SENS. ¹	SEER ²	EER ³		
DX16TC 0361C* (cont.)	CHPF3636B6C*+TXV	D*80VC0803B*A*	34,000	25,500	15.5	12.5	1100	10492843
	CHPF3636B6C*+TXV	D*96VC0403BNA*	33,400	24,700	15	12.5	1080	10492908
	CHPF3636B6C*+TXV	D*96VC0603BNA*	34,000	25,800	15	12.5	1140	10492919
	CHPF3636B6C*+TXV	D*97MC0603BNA*	34,000	25,800	15	12.5	1140	10492930
	CHPF3636B6C*+TXV	D*96VC0803BNA*	33,400	24,700	15.5	12.5	1110	10492941
	CHPF3636B6C*+TXV	D*97MC0803BNA*	33,400	24,700	15.5	12.5	1110	10492952
	CHPF3642C6C*+MBVC1200**-1A*+TXV		34,000	25,800	15.5	12.5	1150	10492797
	CHPF3642C6C*+MBVC1600**-1A*+TXV		34,000	25,100	15.5	12.5	1175	10492806
	CHPF3642C6C*+TXV	D*80VC0603B*A*	34,000	25,100	15.5	12.5	1100	10492822
	CHPF3642C6C*+TXV	D*80VC0604B*A*	34,000	25,800	15.5	12.5	1100	10492833
	CHPF3642C6C*+TXV	D*80VC0803B*A*	34,000	25,500	15.5	12.5	1100	10492844
	CHPF3642C6C*+TXV	D*80VC0804C*A*	34,000	25,800	15.5	12.5	1100	10492853
	CHPF3642C6C*+TXV	D*80VC0805C*A*	34,400	26,100	15.5	12.5	1100	10492867
	CHPF3642C6C*+TXV	D*80VC1005C*A*	34,000	25,500	15.5	12.5	1150	10492893
	CHPF3642C6C*+TXV	D*96VC0403BNA*	33,400	24,700	15.5	12.5	1080	10492909
	CHPF3642C6C*+TXV	D*96VC0603BNA*	34,000	25,800	15	12.5	1140	10492920
	CHPF3642C6C*+TXV	D*97MC0603BNA*	34,000	25,800	15	12.5	1140	10492931
	CHPF3642C6C*+TXV	D*96VC0803BNA*	33,400	24,700	15.5	12.5	1110	10492942
	CHPF3642C6C*+TXV	D*97MC0803BNA*	33,400	24,700	15.5	12.5	1110	10492953
	CHPF3642C6C*+TXV	D*96VC0804CNA*	34,000	25,100	15.5	12.2	1130	10492962
	CHPF3642C6C*+TXV	D*97MC0804CNA*	34,000	25,100	15.5	12.2	1130	10492976
	CHPF3642C6C*+TXV	D*96VC1005CNA*	34,000	25,500	16	12.5	1120	10492990
	CHPF3642C6C*+TXV	D*97MC1005CNA*	34,000	25,500	16	12.5	1120	10493004
	CHPF3642D6C*+MBVC1600**-1A*+TXV		34,000	25,100	16	13	1175	10492807
	CHPF3642D6C*+TXV	D*80VC0804C*A*	34,000	25,800	15.5	12.5	1100	10492854
	CHPF3642D6C*+TXV	D*80VC0805C*A*	34,400	26,100	15.5	12.5	1100	10492868
	CHPF3642D6C*+TXV	D*80VC0805D*A*	33,400	24,700	15	12.5	1100	10492881
	CHPF3642D6C*+TXV	D*80VC1005C*A*	33,400	25,000	15	12.5	1150	10492894
	CHPF3642D6C*+TXV	D*96VC0804CNA*	34,000	25,100	15.5	12.5	1130	10492963
	CHPF3642D6C*+TXV	D*97MC0804CNA*	34,000	25,100	15.5	12.5	1130	10492977
	CHPF3642D6C*+TXV	D*96VC1005CNA*	34,000	25,500	16	13	1120	10492991
	CHPF3642D6C*+TXV	D*97MC1005CNA*	34,000	25,500	16	13	1120	10493005
	CHPF3642D6C*+TXV	D*96VC1005DNA*	34,000	25,500	16	12.5	1120	10493018
	CHPF3642D6C*+TXV	D*97MC1205DNA*	34,400	25,800	16	12.8	1160	10493030
	CHPF3642D6C*+TXV	D*96VC1205DNA*	34,400	25,800	16	12.8	1160	10493042
	CHPF3743C6B*+MBVC1200**-1A*+TXV		34,000	26,100	15.5	12.5	1150	10492798
	CHPF3743C6B*+MBVC1600**-1A*+TXV		34,000	25,500	16	13	1175	10492808
	CHPF3743C6B*+TXV	D*80VC0603B*A*	34,400	25,800	16	13	1100	10492823
	CHPF3743C6B*+TXV	D*80VC0604B*A*	34,600	26,600	16	13	1100	10492834
	CHPF3743C6B*+TXV	D*80VC0803B*A*	34,400	26,100	16	13	1100	10492845
	CHPF3743C6B*+TXV	D*80VC0804C*A*	34,400	26,400	15.5	12.5	1100	10492855
	CHPF3743C6B*+TXV	D*80VC0805C*A*	34,600	26,600	16	13	1100	10492869
CHPF3743C6B*+TXV	D*80VC1005C*A*	34,400	26,100	16	13	1150	10492895	
CHPF3743C6B*+TXV	D*96VC0403BNA*	34,000	25,500	16	12.8	1080	10492910	
CHPF3743C6B*+TXV	D*96VC0603BNA*	34,400	26,100	16	13	1140	10492921	
CHPF3743C6B*+TXV	D*97MC0603BNA*	34,400	26,100	16	13	1140	10492932	
CHPF3743C6B*+TXV	D*96VC0803BNA*	34,000	25,500	15.5	12.5	1110	10492943	

See Notes on Page 33.

OUTDOOR UNIT	INDOOR UNITS		COOLING RATINGS				CFM	AHRI #
	COILS/AIR HANDLERS	FURNACES	TOTAL ¹	SENS. ¹	SEER ²	EER ³		
DX16TC 0361C* (cont.)	CHPF3743C6B*+TXV	D*97MC0803BNA*	34,000	25,500	15.5	12.5	1110	10492954
	CHPF3743C6B*+TXV	D*96VC0804CNA*	34,400	25,800	16	13	1130	10492964
	CHPF3743C6B*+TXV	D*97MC0804CNA*	34,400	25,800	16	13	1130	10492978
	CHPF3743C6B*+TXV	D*96VC1005CNA*	34,400	26,100	16	13	1120	10492992
	CHPF3743C6B*+TXV	D*97MC1005CNA*	34,400	26,100	16	13	1120	10493006
	CHPF3743D6B*+MBVC1600**-1A*+TXV		34,400	26,400	16	13	1175	10492809
	CHPF3743D6B*+TXV	D*80VC0804C*A*	34,400	26,400	16	13	1100	10492856
	CHPF3743D6B*+TXV	D*80VC0805C*A*	34,400	26,400	16	13	1100	10492870
	CHPF3743D6B*+TXV	D*80VC0805D*A*	34,400	26,400	16	13	1100	10492882
	CHPF3743D6B*+TXV	D*80VC1005C*A*	34,400	26,100	16	13	1150	10492896
	CHPF3743D6B*+TXV	D*96VC0804CNA*	34,400	26,400	16	13	1130	10492965
	CHPF3743D6B*+TXV	D*97MC0804CNA*	34,400	26,400	16	13	1130	10492979
	CHPF3743D6B*+TXV	D*96VC1005CNA*	34,400	26,100	16	13	1120	10492993
	CHPF3743D6B*+TXV	D*97MC1005CNA*	34,400	26,100	16	13	1120	10493007
	CHPF3743D6B*+TXV	D*96VC1005DNA*	34,400	26,100	16	13	1120	10493019
	CHPF3743D6B*+TXV	D*97MC1205DNA*	34,400	26,100	16	13	1160	10493031
	CHPF3743D6B*+TXV	D*96VC1205DNA*	34,400	26,100	16	13	1160	10493043
	CHPF4860D6D*+MBVC1600**-1A*+TXV		34,600	25,600	16	13	1175	10492810
	CHPF4860D6D*+TXV	D*80VC0804C*A*	35,000	26,600	16	13	1100	10492857
	CHPF4860D6D*+TXV	D*80VC0805C*A*	35,000	26,600	16	13	1100	10492871
	CHPF4860D6D*+TXV	D*80VC0805D*A*	34,600	25,600	16	13	1100	10492883
	CHPF4860D6D*+TXV	D*80VC1005C*A*	35,000	26,200	16	13	1150	10492897
	CHPF4860D6D*+TXV	D*96VC0804CNA*	35,000	25,900	16	13	1130	10492966
	CHPF4860D6D*+TXV	D*97MC0804CNA*	35,000	25,900	16	13	1130	10492980
	CHPF4860D6D*+TXV	D*96VC1005CNA*	35,000	26,200	16	13	1120	10492994
	CHPF4860D6D*+TXV	D*97MC1005CNA*	35,000	26,200	16	13	1120	10493008
	CHPF4860D6D*+TXV	D*96VC1005DNA*	35,000	26,200	16	13	1120	10493020
	CHPF4860D6D*+TXV	D*97MC1205DNA*	35,000	26,200	16	13	1160	10493032
	CHPF4860D6D*+TXV	D*96VC1205DNA*	35,000	26,200	16	13	1160	10493044
	CSCF3642N6D*+MBVC1600**-1A*+TXV		34,600	25,900	16	13	1175	10492811
	CSCF3642N6D*+TXV	D*80VC0804C*A*	34,400	26,400	16	13	1100	10492858
	CSCF3642N6D*+TXV	D*80VC0805C*A*	35,000	26,900	16	13	1100	10492872
	CSCF3642N6D*+TXV	D*80VC0805D*A*	34,000	25,500	16	13	1100	10492884
	CSCF3642N6D*+TXV	D*80VC1005C*A*	34,400	26,100	16	13	1150	10492898
	CSCF3642N6D*+TXV	D*96VC0804CNA*	34,400	25,800	16	13	1130	10492967
	CSCF3642N6D*+TXV	D*97MC0804CNA*	34,400	25,800	16	13	1130	10492981
	CSCF3642N6D*+TXV	D*96VC1005CNA*	34,400	26,100	16	13	1120	10492995
	CSCF3642N6D*+TXV	D*97MC1005CNA*	34,400	26,100	16	13	1120	10493009
	CSCF3642N6D*+TXV	D*96VC1005DNA*	34,400	26,100	16	13	1120	10493021
	CSCF3642N6D*+TXV	D*97MC1205DNA*	34,400	26,100	16	13	1160	10493033
	CSCF3642N6D*+TXV	D*96VC1205DNA*	34,400	26,100	16	13	1160	10493045
	CSCF4860N6D*+MBVC1600**-1A*+TXV		35,000	26,200	16	13	1175	10492812
	CSCF4860N6D*+TXV	D*80VC0804C*A*	35,000	26,900	16	13	1100	10492859
	CSCF4860N6D*+TXV	D*80VC0805C*A*	35,000	26,900	16	13	1100	10492873
	CSCF4860N6D*+TXV	D*80VC0805D*A*	35,000	26,200	16	13	1100	10492885
	CSCF4860N6D*+TXV	D*80VC1005C*A*	35,000	26,600	16	13	1150	10492899
	CSCF4860N6D*+TXV	D*96VC0804CNA*	35,000	26,200	16	13	1130	10492968

See Notes on Page 33.

OUTDOOR UNIT	INDOOR UNITS		COOLING RATINGS				CFM	AHRI #
	COILS/AIR HANDLERS	FURNACES	TOTAL ¹	SENS. ¹	SEER ²	EER ³		
DX16TC 0361C* (cont.)	CSCF4860N6D*+TXV	D*97MC0804CNA*	35,000	26,200	16	13	1130	10492982
	CSCF4860N6D*+TXV	D*96VC1005CNA*	35,000	26,600	16	13	1120	10492996
	CSCF4860N6D*+TXV	D*97MC1005CNA*	35,000	26,600	16	13	1120	10493010
	CSCF4860N6D*+TXV	D*96VC1005DNA*	35,000	26,600	16	13	1120	10493022
	CSCF4860N6D*+TXV	D*97MC1205DNA*	35,000	26,600	16	13	1160	10493034
	CSCF4860N6D*+TXV	D*96VC1205DNA*	35,000	26,600	16	13	1160	10493046
	DV29PTCB14A*		34,000	25,100	15.5	12.5	1080	10492780
	DV31PTCC14A*		34,400	25,100	16	13	1130	10492782
	DV37PTCB14A*		34,000	25,100	15	12.5	1080	10492781
	DV37PTCC14A*		34,600	25,200	16	13	1130	10492783
	DV37PTCD14A*		35,000	26,900	16	13	1145	10492784
	DV48PTCC14A*		33,400	24,300	15	12.5	1010	10492785
	DV49PTCC14A*		34,400	26,100	16	12.5	1100	10492786
	DV49PTCD14A*		35,400	27,200	16	13	1200	10492787
DX16TC 0481C*	CA*F4860*6D*+EEP+TXV		46,500	33,000	14.5	12.2	1400	10493048
	CA*F4860*6D*+MBVC1600**-1A*+TXV		47,000	34,300	16	12.5	1500	10493059
	CA*F4860*6D*+MBVC2000**-1A*+TXV		47,000	34,300	16	13	1570	10493064
	CA*F4860*6D*+TXV	D*80VC0604B*A*	46,000	32,600	15.5	12.5	1400	10493069
	CA*F4860*6D*+TXV	D*80VC0804C*A*	46,500	33,400	15.5	12.5	1480	10493074
	CA*F4860*6D*+TXV	D*80VC0805C*A*	46,500	33,000	16	12.5	1410	10493079
	CA*F4860*6D*+TXV	D*80VC0805D*A*	46,500	33,400	16	12.5	1450	10493084
	CA*F4860*6D*+TXV	D*80VC1005C*A*	46,500	33,400	15.5	12.5	1450	10493089
	CA*F4860*6D*+TXV	D*96VC0804CNA*	46,500	33,400	16	12.5	1400	10493094
	CA*F4860*6D*+TXV	D*97MC0804CNA*	46,500	33,400	16	12.5	1400	10493099
	CA*F4860*6D*+TXV	D*96VC1005CNA*	46,500	33,400	15.5	12.5	1440	10493104
	CA*F4860*6D*+TXV	D*97MC1005CNA*	46,500	33,400	15.5	12.5	1440	10493109
	CA*F4860*6D*+TXV	D*96VC1005DNA*	46,500	33,400	15.5	12.5	1410	10493114
	CA*F4860*6D*+TXV	D*96VC1205DNA*	46,500	33,400	16	12.5	1460	10493119
	CA*F4860*6D*+TXV	D*97MC1205DNA*	46,500	33,400	16	12.5	1460	10493124
	CA*F4961*6D*+EEP+TXV		48,000	34,000	15	12.5	1400	10493047
	CA*F4961*6D*+MBVC1600**-1A*+TXV		48,500	35,800	16	13	1500	10493057
	CA*F4961*6D*+MBVC2000**-1A*+TXV		48,000	35,500	17	13	1570	10493062
	CA*F4961*6D*+TXV	D*80VC0604B*A*	47,500	33,700	16	12.5	1400	10493067
	CA*F4961*6D*+TXV	D*80VC0804C*A*	48,500	35,400	16	13	1480	10493072
	CA*F4961*6D*+TXV	D*80VC0805C*A*	48,000	34,500	16	13	1410	10493077
	CA*F4961*6D*+TXV	D*80VC0805D*A*	48,000	35,000	16	13	1450	10493082
	CA*F4961*6D*+TXV	D*80VC1005C*A*	48,000	35,000	16	13	1450	10493087
	CA*F4961*6D*+TXV	D*96VC0804CNA*	48,000	35,000	16	13	1400	10493092
	CA*F4961*6D*+TXV	D*97MC0804CNA*	48,000	35,000	16	13	1400	10493097
	CA*F4961*6D*+TXV	D*96VC1005CNA*	48,000	35,000	16	13	1440	10493102
	CA*F4961*6D*+TXV	D*97MC1005CNA*	48,000	35,000	16	13	1440	10493107
	CA*F4961*6D*+TXV	D*96VC1005DNA*	48,000	35,000	16	13	1410	10493112
	CA*F4961*6D*+TXV	D*96VC1205DNA*	48,000	35,000	16	13	1460	10493117
	CA*F4961*6D*+TXV	D*97MC1205DNA*	48,000	35,000	16	13	1460	10493122
CAPT4961*4A*	D*80VC0604B*A*	47,500	33,700	16	12.5	1400	10493068	
CAPT4961*4A*	D*80VC0804C*A*	48,500	34,900	16	12.5	1480	10493073	
CAPT4961*4A*	D*80VC0805C*A*	47,500	34,200	16	13	1410	10493078	

See Notes on Page 33.

OUTDOOR UNIT	INDOOR UNITS		COOLING RATINGS				CFM	AHRI #
	COILS/AIR HANDLERS	FURNACES	TOTAL ¹	SENS. ¹	SEER ²	EER ³		
DX16TC 0481C* (cont.)	CAPT4961*4A*	D*80VC0805D*A*	48,000	35,000	16	13	1450	10493083
	CAPT4961*4A*	D*80VC1005C*A*	47,500	34,600	16	13	1450	10493088
	CAPT4961*4A*	D*96VC0804CNA*	47,500	34,600	16	13	1400	10493093
	CAPT4961*4A*	D*97MC0804CNA*	47,500	34,600	16	13	1400	10493098
	CAPT4961*4A*	D*96VC1005CNA*	48,000	35,000	16	12.5	1440	10493103
	CAPT4961*4A*	D*97MC1005CNA*	48,000	35,000	16	12.5	1440	10493108
	CAPT4961*4A*	D*96VC1005DNA*	48,000	35,000	16	12.5	1410	10493113
	CAPT4961*4A*	D*96VC1205DNA*	48,000	35,000	16	12.5	1460	10493118
	CAPT4961*4A*	D*97MC1205DNA*	48,000	35,000	16	12.5	1460	10493123
	CAPT4961*4A*+MBVC1600**-1A*		48,000	35,500	16	13	1500	10493058
	CAPT4961*4A*+MBVC2000**-1A*		47,500	35,100	16.5	13	1570	10493063
	CHPF4860D6D*+EEP+TXV		46,500	32,500	14.5	12.2	1400	10493049
	CHPF4860D6D*+MBVC1600**-1A*+TXV		47,000	34,300	16	12.5	1500	10493060
	CHPF4860D6D*+MBVC2000**-1A*+TXV		47,500	34,600	16	13	1570	10493065
	CHPF4860D6D*+TXV	D*80VC0604B*A*	46,500	33,000	16	12.5	1400	10493070
	CHPF4860D6D*+TXV	D*80VC0804C*A*	47,000	34,300	16	13	1480	10493075
	CHPF4860D6D*+TXV	D*80VC0805C*A*	46,500	33,000	16	13	1410	10493080
	CHPF4860D6D*+TXV	D*80VC0805D*A*	47,000	33,800	16	13	1450	10493085
	CHPF4860D6D*+TXV	D*80VC1005C*A*	47,000	33,800	16	13	1450	10493090
	CHPF4860D6D*+TXV	D*96VC0804CNA*	46,500	33,400	16	13	1400	10493095
	CHPF4860D6D*+TXV	D*97MC0804CNA*	46,500	33,400	16	13	1400	10493100
	CHPF4860D6D*+TXV	D*96VC1005CNA*	47,000	33,800	16	13	1440	10493105
	CHPF4860D6D*+TXV	D*97MC1005CNA*	47,000	33,800	16	13	1440	10493110
	CHPF4860D6D*+TXV	D*96VC1005DNA*	47,000	33,800	16	13	1410	10493115
	CHPF4860D6D*+TXV	D*96VC1205DNA*	47,000	34,300	16	13	1460	10493120
	CHPF4860D6D*+TXV	D*97MC1205DNA*	47,000	34,300	16	13	1460	10493125
	CSCF4860N6D*+EEP+TXV		47,500	33,700	15	12.5	1400	10493050
	CSCF4860N6D*+MBVC1600**-1A*+TXV		47,500	35,100	16	13	1500	10493061
	CSCF4860N6D*+MBVC2000**-1A*+TXV		48,500	35,800	16	13	1570	10493066
	CSCF4860N6D*+TXV	D*80VC0604B*A*	47,500	33,700	16	12.5	1400	10493071
	CSCF4860N6D*+TXV	D*80VC0804C*A*	47,000	34,300	16	13	1480	10493076
	CSCF4860N6D*+TXV	D*80VC0805C*A*	48,000	34,500	16	13	1410	10493081
	CSCF4860N6D*+TXV	D*80VC0805D*A*	47,000	34,300	16	13	1450	10493086
	CSCF4860N6D*+TXV	D*80VC1005C*A*	47,000	34,300	16	13	1450	10493091
	CSCF4860N6D*+TXV	D*96VC0804CNA*	48,000	35,000	16	13	1400	10493096
	CSCF4860N6D*+TXV	D*97MC0804CNA*	48,000	35,000	16	13	1400	10493101
	CSCF4860N6D*+TXV	D*96VC1005CNA*	47,000	34,300	16	13	1440	10493106
	CSCF4860N6D*+TXV	D*97MC1005CNA*	47,000	34,300	16	13	1440	10493111
	CSCF4860N6D*+TXV	D*96VC1005DNA*	48,000	35,000	16	13	1410	10493116
	CSCF4860N6D*+TXV	D*96VC1205DNA*	48,000	35,000	16	13	1460	10493121
	CSCF4860N6D*+TXV	D*97MC1205DNA*	48,000	35,000	16	13	1460	10493126
	DV48PTCC14A*		46,000	32,600	15	12.5	1440	10493051
DV49PTCC14A*		46,000	32,600	16	12.5	1420	10493052	
DV49PTCD14A*		47,500	34,200	16	13	1460	10493053	
DV59PTCC14A*		46,500	33,000	16	12.5	1420	10493054	
DV59PTCD14A*		47,000	34,300	16	12.8	1510	10493055	
DV61PTCD14A*		47,500	34,200	16	13	1460	10493056	

See Notes on Page 33.

OUTDOOR UNIT	INDOOR UNITS		COOLING RATINGS				CFM	AHRI #
	COILS/AIR HANDLERS	FURNACES	TOTAL ¹	SENS. ¹	SEER ²	EER ³		
DX16TC 0601C*	CA*F4860*6D*+EEP+TXV		55,500	40,000	14.5	11.7	1480	10510406
	CA*F4860*6D*+MBVC2000**-1A*+TXV		56,000	40,400	16	12	1720	10510412
	CA*F4860*6D*+TXV	D*96VC1005CNA*	55000	39,600	16	12	1550	10510417
	CA*F4860*6D*+TXV	D*96VC1205DNA*	54000	38,800	15.5	11.7	1600	10510422
	CA*F4860*6D*+TXV	D*97MC1005CNA*	55000	39,600	16	12	1550	10510427
	CA*F4860*6D*+TXV	D*97MC1205DNA*	54000	38,800	15.5	11.7	1600	10510432
	CA*F4860*6D*+TXV	D*80VC1005C*A*	54500	39,200	15.5	11.7	1600	10510437
	CA*F4860*6D*+TXV	D*96VC1005DNA*	54000	38,800	15.5	12	1610	10510442
	CA*F4860*6D*+TXV	D*80VC0805C*A*	54500	39,200	15.5	11.7	1630	10510447
	CA*F4860*6D*+TXV	D*80VC0805D*A*	55000	39,600	15.5	12	1630	10510452
	CA*F4961*6D*+EEP+TXV		56,500	40,600	15	12	1480	10510405
	CA*F4961*6D*+MBVC2000**-1A*+TXV		58,000	41,800	17	13	1720	10510410
	CA*F4961*6D*+TXV	D*96VC1005CNA*	55000	39,600	16	12.5	1550	10510415
	CA*F4961*6D*+TXV	D*96VC1205DNA*	55000	39,600	16	12.5	1600	10510420
	CA*F4961*6D*+TXV	D*97MC1005CNA*	55000	39,600	16	12.5	1550	10510425
	CA*F4961*6D*+TXV	D*97MC1205DNA*	55000	39,600	16	12.5	1600	10510430
	CA*F4961*6D*+TXV	D*80VC1005C*A*	56500	40,600	16	12	1600	10510435
	CA*F4961*6D*+TXV	D*96VC1005DNA*	54500	39,200	16	12.5	1610	10510440
	CA*F4961*6D*+TXV	D*80VC0805C*A*	56000	40,400	16	12.5	1630	10510445
	CA*F4961*6D*+TXV	D*80VC0805D*A*	56000	40,400	16	12.5	1630	10510450
	CAPT4961*4A*	D*96VC1005CNA*	55000	39,600	16	12.5	1550	10510416
	CAPT4961*4A*	D*96VC1205DNA*	55000	39,600	16	12.5	1600	10510421
	CAPT4961*4A*	D*97MC1005CNA*	55000	39,600	16	12.5	1550	10510426
	CAPT4961*4A*	D*97MC1205DNA*	55000	39,600	16	12.5	1600	10510431
	CAPT4961*4A*	D*80VC1005C*A*	56000	40,400	16	12	1600	10510436
	CAPT4961*4A*	D*96VC1005DNA*	54500	39,200	16	12.5	1610	10510441
	CAPT4961*4A*	D*80VC0805C*A*	56000	40,400	16	12	1630	10510446
	CAPT4961*4A*	D*80VC0805D*A*	55500	40,000	16	12.5	1630	10510451
	CAPT4961*4A*+MBVC2000**-1A*		58,000	41,800	17	12.5	1720	10510411
	CHPF4860D6D*+EEP+TXV		55,500	40,000	14.5	11.7	1480	10510407
	CHPF4860D6D*+MBVC2000**-1A*+TXV		56,000	40,400	16	12.5	1720	10510413
	CHPF4860D6D*+TXV	D*96VC1005CNA*	55000	39,600	16	12.5	1550	10510418
	CHPF4860D6D*+TXV	D*96VC1205DNA*	55000	39,600	16	12.5	1600	10510423
	CHPF4860D6D*+TXV	D*97MC1005CNA*	55000	39,600	16	12.5	1550	10510428
	CHPF4860D6D*+TXV	D*97MC1205DNA*	55000	39,600	16	12.5	1600	10510433
	CHPF4860D6D*+TXV	D*80VC1005C*A*	56500	40,600	15.5	12	1600	10510438
	CHPF4860D6D*+TXV	D*96VC1005DNA*	54500	39,200	16	12.5	1610	10510443
	CHPF4860D6D*+TXV	D*80VC0805C*A*	55500	40,000	16	12.5	1630	10510448
	CHPF4860D6D*+TXV	D*80VC0805D*A*	55500	40,000	16	12	1630	10510453
	CSCF4860N6D*+EEP+TXV		55,500	40,000	15	12	1480	10510408
	CSCF4860N6D*+MBVC2000**-1A*+TXV		57,000	41,000	16	12.5	1720	10510414
	CSCF4860N6D*+TXV	D*96VC1005CNA*	55000	39,600	16	12.5	1550	10510419
	CSCF4860N6D*+TXV	D*96VC1205DNA*	54500	39,200	16	12.5	1600	10510424
	CSCF4860N6D*+TXV	D*97MC1005CNA*	55000	39,600	16	12.5	1550	10510429
	CSCF4860N6D*+TXV	D*97MC1205DNA*	54500	39,200	16	12.5	1600	10510434
	CSCF4860N6D*+TXV	D*80VC1005C*A*	56000	40,400	15.5	12	1600	10510439
	CSCF4860N6D*+TXV	D*96VC1005DNA*	54500	39,200	16	12.5	1610	10510444

OUTDOOR UNIT	INDOOR UNITS		COOLING RATINGS				CFM	AHRI #
	COILS/AIR HANDLERS	FURNACES	TOTAL ¹	SENS. ¹	SEER ²	EER ³		
DX16TC 0601C* (cont.)	CSCF4860N6D*+TXV	D*80VC0805C*A*	55000	39,600	16	12.5	1630	10510449
	CSCF4860N6D*+TXV	D*80VC0805D*A*	55500	40,000	16	12.5	1630	10510454
	DV61PTCD14A*		56,500	40,600	16.5	13	1660	10510409

¹ BTU/h

² Seasonal Energy Efficiency Ratio; Certified per AHRI 210/240 @ 80°F/ 67°F/ 95°F

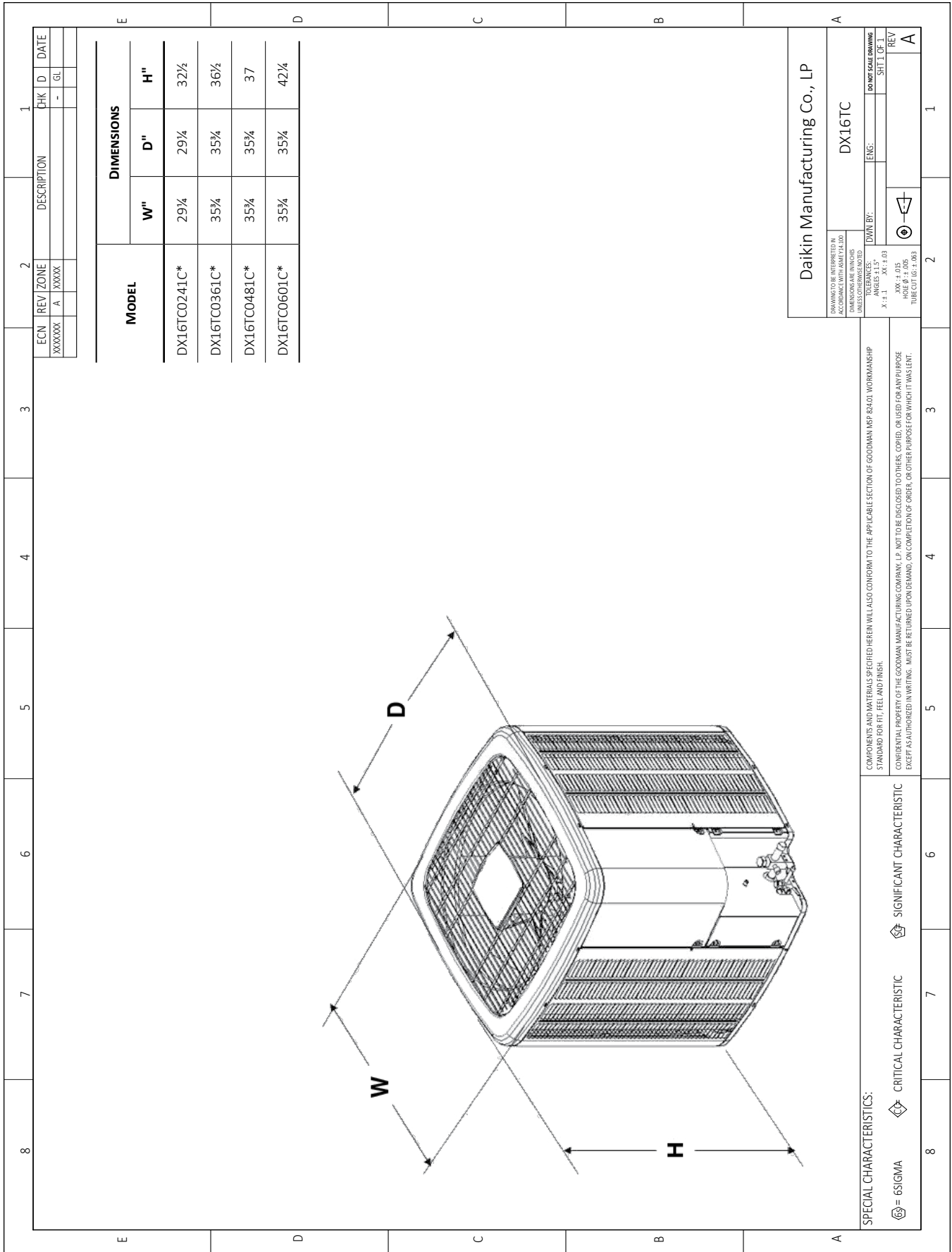
³ Energy Efficiency Ratio @ 80°F/ 67°F/ 95°F

Notes

Always check the S&R plate for electrical data on the unit being installed.

When matching the outdoor unit to the indoor unit, use the piston supplied with the outdoor unit or that specified on the piston kit chart supplied with the indoor unit.

EEP - Order from Service Dept. Part No. B13707-38 or new Solid State Board B13707-35S. Part No. B13707-38 is not interchangeable with B13707-35S. The Daikin Gas Furnace contains the EEP cooling time delay



ECN	REV	ZONE	DESCRIPTION	CHK	ID	DATE
XXXXXX	A	XXXX		-	GL	

MODEL	DIMENSIONS		
	W"	D"	H"
DX16TC0241C*	29 3/4	29 3/4	32 1/2
DX16TC0361C*	35 3/4	35 3/4	36 1/2
DX16TC0481C*	35 3/4	35 3/4	37
DX16TC0601C*	35 3/4	35 3/4	42 1/4

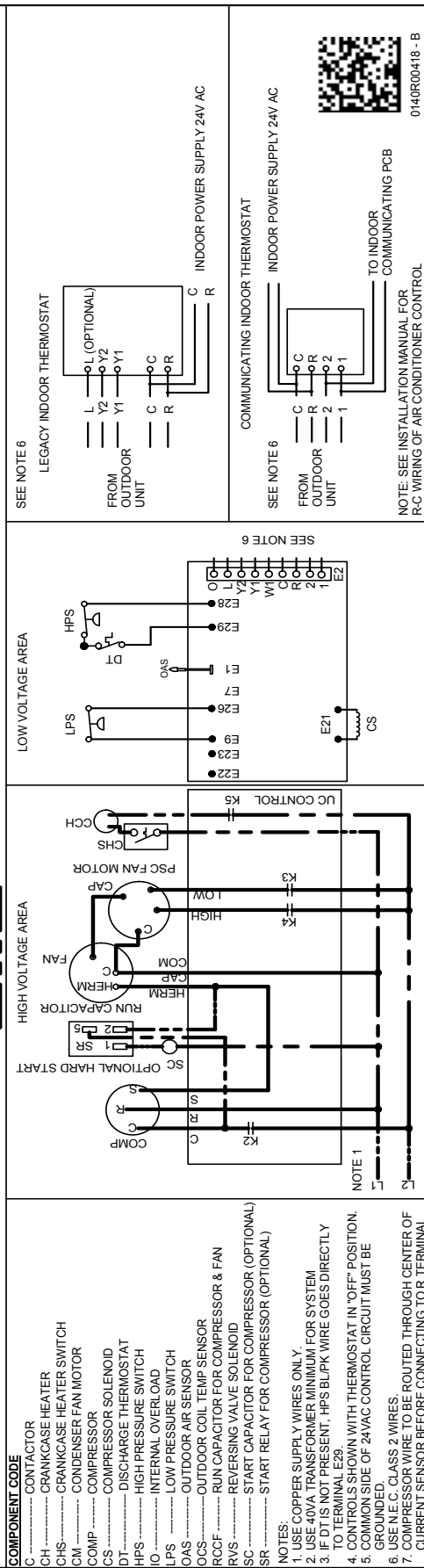
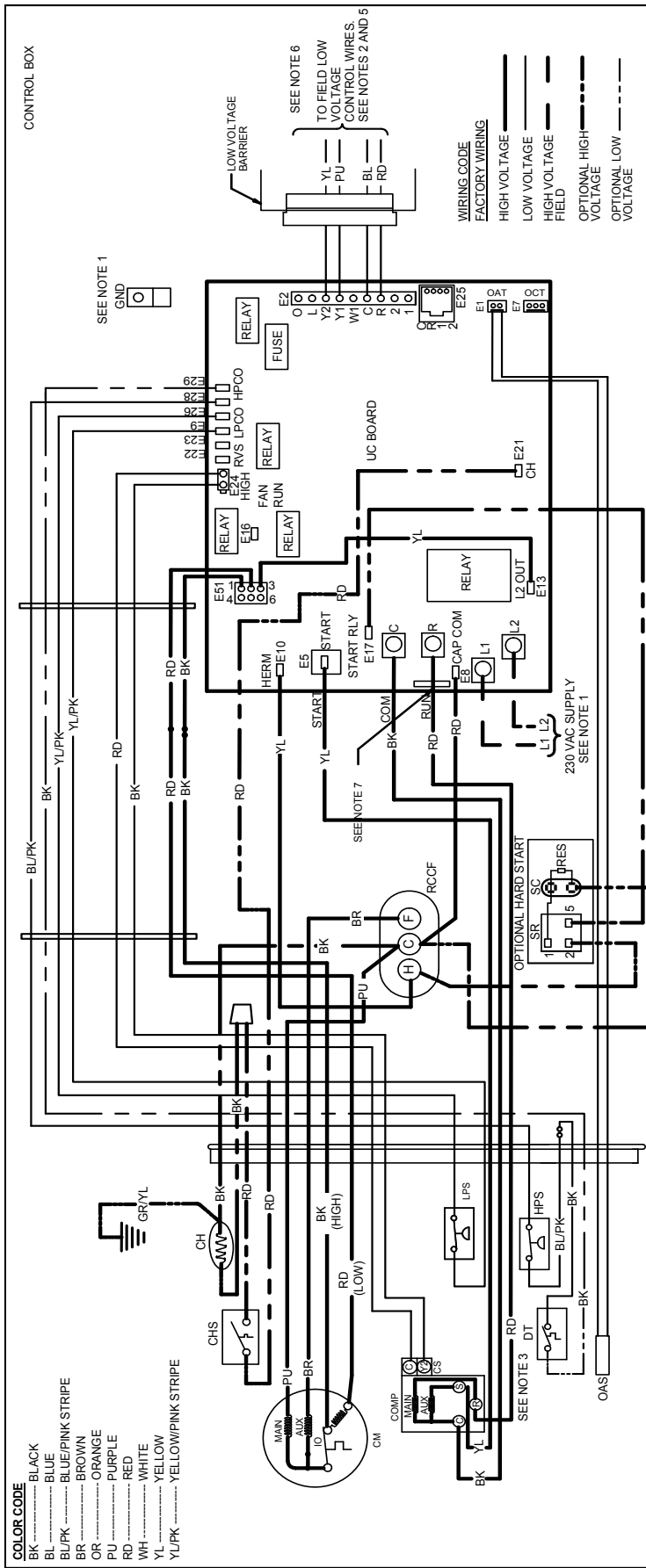
DAIKIN TO BE INTERPRETED IN ACCORDANCE WITH ASHRAE 1.1.1.0		DIMENSIONS ARE IN INCHES		TOLERANCES:	
X ± 1.1		XX ± 1.015		XXX ± 1.015	
X ± 1.1		XX ± 1.015		XXX ± 1.015	
TUBE CUT LG. ± .083		TUBE CUT LG. ± .083		TUBE CUT LG. ± .083	
DRAWING BY: [Symbol]		ENGINEER: [Symbol]		SHEET OF 1	
DAIKIN MANUFACTURING CO., LP		DX16TC		REV A	

SPECIAL CHARACTERISTICS:

⊕ = 6 SIGMA ⊕ = CRITICAL CHARACTERISTIC ⊕ = SIGNIFICANT CHARACTERISTIC

COMPONENTS AND MATERIALS SPECIFIED HEREIN WILL ALSO CONFORM TO THE APPLICABLE SECTION OF GOODMAN MSP-82401 WORKMANSHIP STANDARD FOR FIT, FEEL AND FINISH.

CONFIDENTIAL PROPERTY OF THE GOODMAN MANUFACTURING COMPANY, L.P. NOT TO BE DISCLOSED TO OTHERS, COPIED, OR USED FOR ANY PURPOSE EXCEPT AS AUTHORIZED IN WRITING. MUST BE RETURNED UPON DEMAND, ON COMPLETION OF ORDER, OR OTHER PURPOSE FOR WHICH IT WAS LENT.



WARNING
 High Voltage: Disconnect all power before servicing or installing this unit. Multiple power sources may be present. Failure to do so may cause property damage, personal injury, or death.

MODEL	DESCRIPTION	DX16TC 024**	DX16TC 036**	DX16TC 048**	DX16TC 060**
ABK-20	Anchor Bracket Kit [^]	X	X	X	X
ASC-01	Anti-Short Cycle Kit	X	X	X	X
B1141643 ¹	24V Transformer	X	X	X	X
CSR-U-1	Hard-start Kit	X	X	X	
CSR-U-2	Hard-start Kit		X		
CSR-U-3	Hard-start Kit				X
FSK01A ²	Freeze Protection Kit	X	X	X	X
LSK02A	Liquid Line Solenoid Valve	X	X	X	X
OT18-60A ³	Outdoor Thermostat/Lockout Thermostat	X	X	X	X
TX2N4	TXV Kit				
TX2N4A	TXV Kit	X			
TX3N4 ⁴	TXV Kit		X		
TX5N4	TXV Kit			X	X

[^] Contains 20 brackets; four brackets needed to anchor unit to pad

¹ This component is included in the CTK01AA communicating thermostat kit.

² Installed on indoor coil

³ Available in 24V legacy mode only. This feature is integrated in the communicating mode.

Note: Maximum number of installed accessories at the same time is limited by the size of the unit's control box.