



DZ14SN

COOLING CAPACITY: 18,000 - 60,000 BTU/H
HEATING CAPACITY: 18,000 - 60,000 BTU/H

ENERGY-EFFICIENT
SPLIT SYSTEM HEAT PUMP
UP TO 15 SEER & 9.0 HSPF



■ Contents

Nomenclature.....	2
Product Specifications.....	3
Expanded Cooling Data	4
Expanded Heating Data	20
Performance Data	22
AHRI Ratings	24
Dimensions	36
Wiring Diagram	37
Accessories	38

■ Standard Features

- Energy-efficient compressor
- Time-delay technology to ensure quiet reliable defrost
- Factory-installed bi-flow liquid line filter drier
- Factory-installed suction line accumulator
- Factory-installed compressor crankcase heater
- Factory-installed high-capacity muffler
- Single-speed condenser fan motor
- Copper tube/enhanced aluminum fin coil
- High- and low-pressure switches
- Service valves with sweat connections and easy access to gauge ports
- AHRI Certified; ETL Listed

■ Cabinet Features

- Custom Nickel Gray powder-paint finish
- 500-hour salt-spray tested
- Heavy-gauge galvanized steel cabinet with louvered sound control top
- Steel louver coil guard
- Top and side maintenance access
- Single-panel access to controls with space provided for field-installed accessories
- When properly anchored, meets the 2010 Florida Building Code unit integrity requirements for hurricane-type winds (Anchor bracket kits available.)



* Complete warranty details available from your local dealer or at www.daikincomfort.com. To receive the 12-Year Parts Limited Warranty, online registration must be completed within 60 days of installation. Online registration is not required in California or Quebec.

	D	Z	14	S	N	036	3	A	A	
	1	2	3,4	5	6	7,8,9	10	11	12	
Brand	D - Daikin									Engineering
										Major & Minor revisions * Not used for inventory control.
Type	X - AC R-410A Z - HP R-410A									Voltage
										1 - 208/230 V Single-Phase 60 Hz
SEER	13 - 13 SEER 18 - 18 SEER 14 - 14 SEER 20 - 20 SEER 16 - 16 SEER									Nominal Tonnage
										018 - 1½ tons 042 - 3½ tons 024 - 2 tons 048 - 4 tons 030 - 2½ tons 060 - 5 tons 036 - 3 tons
Compressor	S - Single Stage T - Two Stage									Feature Set
										A - Base D - Deluxe C - ComfortNet 4-Wire Ready N - Nominal

	DZ14SN 0181A*	DZ14SN 0241A*	DZ14SN 0301A*	DZ14SN 0361A*	DZ14SN 0421A*	DZ14SN 0481A*	DZ14SN 0491A*	DZ14SN 0601A*
NOMINAL CAPACITIES								
Cooling (BTU/h)	18,000	24,000	30,000	36,000	42,000	48,000	48,000	60,000
Heating (BTU/h)	18,000	24,000	30,000	36,000	42,000	48,000	48,000	60,000
SEER / EER	14/11.5	14/11.5	14/11.5	14/11.5	14/11.5	14/11.5	14/11.5	14/11.5
Decibels	72	72	74	74	75	75	76	76
COMPRESSOR								
RLA	9.0	10.9	13.5	15.4	16.7	18.5	19.9	26.4
LRA	47.5	62.9	72.5	83.9	109.0	124.0	109.0	134.0
Type	Scroll	Scroll	Scroll	Scroll	Scroll	Scroll	Scroll	Scroll
CONDENSER FAN MOTOR								
Horsepower	1/6	1/6	1/6	1/6	1/6	1/4	1/6	1/4
FLA	0.95	0.95	0.95	0.95	1.1	1.3	1.1	1.3
REFRIGERATION SYSTEM								
Refrigerant Line Size ¹								
Liquid Line Size ("O.D.)	3/8"	3/8"	3/8"	3/8"	3/8"	3/8"	3/8"	3/8"
Suction Line Size ("O.D.)	3/4"	3/4"	3/4"	7/8"	1 1/8"	1 1/8"	1 1/8"	1 1/8"
Refrigerant Connection Size								
Liquid Valve Size ("O.D.)	3/8"	3/8"	3/8"	3/8"	3/8"	3/8"	3/8"	3/8"
Suction Valve Size ("O.D.)	3/4"	3/4"	3/4"	3/4"	7/8"	3/4"	7/8"	7/8"
Valve Connection Type	Sweat	Sweat	Sweat	Sweat	Sweat	Sweat	Sweat	Sweat
Refrigerant Charge	92	92	95	112	140	133	187	205
ELECTRICAL DATA								
Volts/Phase (60 Hz)	208-230/1	208-230/1	208-230/1	208-230/1	208-230/1	208-230/1	208-230/1	208-230/1
Minimum Circuit Ampacity ²	12.2	14.6	17.8	20.2	22.0	24.4	26.0	34.3
Max. Overcurrent Protection ³	20	25	30	35	35	40	45	60
Min / Max Volts	197 / 253	197 / 253	197 / 253	197 / 253	197 / 253	197 / 253	197 / 253	197 / 253
Electrical Conduit Size	1/2" or 3/4"	1/2" or 3/4"	1/2" or 3/4"	1/2" or 3/4"	1/2" or 3/4"	1/2" or 3/4"	1/2" or 3/4"	1/2" or 3/4"
EQUIPMENT WEIGHT (LBS)								
	143	143	171	173	191	226	273	277
SHIP WEIGHT (LBS)								
	154	154	182	184	207	237	288	292

¹ Tested and rated in accordance with ARI Standard 210/240

² Wire size should be determined in accordance with National Electrical Codes; extensive wire runs will require larger wire sizes

³ Must use time-delay fuses or HACR-type circuit breakers of the same size as noted.

NOTES

- Always check the S&R plate for electrical data on the unit being installed.
- Installer will need to supply 3/8" to 1 1/8" adapters for suction line connections.
- Unit is charged with refrigerant for 15' of 3/8" liquid line. System charge must be adjusted per Installation Instructions Final Charge Procedure.
- Installation of these units may require the specified TXV Kit to be installed on the indoor coil.
THE SPECIFIED TXV IS DETERMINED BY THE OUTDOOR UNIT NOT THE INDOOR COIL.

IDB		OUTDOOR AMBIENT TEMPERATURE																							
		65°F				75°F				85°F				95°F				105°F				115°F			
		59	63	67	71	59	63	67	71	59	63	67	71	59	63	67	71	59	63	67	71	59	63	67	71
		ENTERING INDOOR WET BULB TEMPERATURE																							
525	MBh	17.9	18.1	18.7	-	17.7	18.0	18.5	-	17.3	17.5	18.0	-	16.4	16.7	17.2	-	15.5	15.7	16.3	-	14.6	14.8	15.4	-
	S/T	0.62	0.54	0.40	-	0.62	0.55	0.40	-	0.65	0.57	0.43	-	1.00	0.59	0.45	-	1.00	0.61	0.47	-	1.00	0.67	0.53	-
	ΔT	19	17	14	-	19	17	14	-	19	18	14	-	19	17	14	-	19	17	14	-	20	18	15	-
	kW	1.06	1.05	1.05	-	1.17	1.17	1.17	-	1.30	1.30	1.30	-	1.45	1.45	1.44	-	1.61	1.60	1.60	-	1.79	1.79	1.79	-
	Amps	4.0	4.0	4.0	-	4.5	4.5	4.5	-	5.1	5.1	5.1	-	5.8	5.8	5.8	-	6.5	6.5	6.5	-	7.4	7.4	7.4	-
610	HI PR	244	245	247	-	283	284	286	-	323	325	326	-	367	368	370	-	414	415	417	-	464	465	467	-
	LO PR	125	126	129	-	132	134	137	-	139	141	144	-	145	146	149	-	150	152	155	-	157	159	162	-
	MBh	18.1	18.4	18.9	-	18.0	18.2	18.8	-	17.5	17.8	18.3	-	16.7	17.0	17.5	-	15.7	16.0	16.5	-	14.8	15.1	15.6	-
	S/T	0.69	0.61	0.47	-	0.69	0.62	0.48	-	0.72	0.64	0.50	-	1.00	0.66	0.52	-	1.00	0.69	0.54	-	1.00	0.74	0.60	-
	ΔT	18	16	13	-	18	16	13	-	18	16	13	-	18	16	13	-	18	16	13	-	19	17	14	-
675	kW	1.06	1.06	1.06	-	1.18	1.18	1.18	-	1.31	1.31	1.31	-	1.45	1.45	1.45	-	1.61	1.61	1.61	-	1.80	1.80	1.80	-
	Amps	4.0	4.0	4.0	-	4.6	4.6	4.6	-	5.2	5.2	5.2	-	5.8	5.8	5.8	-	6.6	6.6	6.6	-	7.4	7.4	7.4	-
	HI PR	247	248	250	-	285	286	288	-	326	327	329	-	369	370	372	-	416	417	419	-	466	468	469	-
	LO PR	127	128	131	-	134	136	139	-	141	143	146	-	147	148	151	-	152	154	157	-	159	161	164	-
	MBh	18.4	18.6	19.2	-	18.2	18.5	19.0	-	17.8	18.0	18.5	-	16.9	17.2	17.7	-	16.0	16.2	16.8	-	15.1	15.3	15.9	-
70	S/T	0.72	0.64	0.50	-	0.73	0.65	0.51	-	0.75	0.67	0.53	-	1.00	0.69	0.55	-	1.00	0.72	0.58	-	1.00	0.77	0.63	-
	ΔT	17	16	12	-	17	15	12	-	17	16	12	-	17	15	12	-	17	15	12	-	18	16	13	-
	kW	1.07	1.07	1.06	-	1.18	1.18	1.18	-	1.32	1.31	1.31	-	1.46	1.46	1.46	-	1.62	1.62	1.61	-	1.80	1.80	1.80	-
	Amps	4.1	4.1	4.0	-	4.6	4.6	4.6	-	5.2	5.2	5.2	-	5.8	5.8	5.8	-	6.6	6.6	6.6	-	7.4	7.4	7.4	-
	HI PR	248	250	251	-	287	288	290	-	328	329	330	-	371	372	374	-	418	419	421	-	468	469	471	-
LO PR	128	130	133	-	136	138	141	-	143	144	147	-	148	150	153	-	154	155	159	-	161	162	166	-	

525	MBh	17.9	18.1	18.7	19.5	17.7	18.0	18.5	19.3	17.3	17.5	18.1	18.9	16.5	16.7	17.2	18.1	15.5	15.7	16.3	17.1	14.6	14.8	15.4	16.2
	S/T	0.75	0.67	0.53	0.38	0.76	0.68	0.54	0.39	1.00	0.78	0.64	0.49	1.00	0.82	0.68	0.51	1.00	0.75	0.61	0.46	1.00	1.00	0.66	0.51
	ΔT	23	21	18	15	23	21	18	15	23	22	18	15	23	21	18	14	23	21	18	14	24	22	19	15
	kW	1.05	1.05	1.05	1.06	1.17	1.17	1.17	1.18	1.30	1.30	1.30	1.31	1.45	1.45	1.44	1.45	1.61	1.60	1.60	1.61	1.79	1.79	1.79	1.80
	Amps	4.0	4.0	4.0	4.0	4.5	4.5	4.5	4.6	5.1	5.1	5.1	5.2	5.8	5.8	5.8	5.8	6.5	6.5	6.5	6.5	7.4	7.4	7.4	7.4
610	HI PR	245	246	247	252	283	284	286	290	324	325	326	331	367	368	370	374	414	415	417	421	464	465	467	471
	LO PR	125	126	129	135	132	134	137	142	139	141	144	149	145	146	149	155	150	152	155	160	157	159	162	167
	MBh	18.2	18.4	18.9	19.8	18.0	18.2	18.8	19.6	17.5	17.8	18.3	19.1	16.7	17.0	17.5	18.3	15.7	16.0	16.5	17.3	14.8	15.1	15.6	16.4
	S/T	0.82	0.74	0.60	0.46	1.00	0.75	0.61	0.46	1.00	0.78	0.64	0.49	1.00	0.82	0.68	0.51	1.00	0.82	0.68	0.53	1.00	1.00	0.73	0.58
	ΔT	22	20	17	13	22	20	17	13	22	20	17	14	22	20	17	13	22	20	17	13	23	21	18	14
675	kW	1.06	1.06	1.06	1.07	1.18	1.18	1.18	1.19	1.31	1.31	1.31	1.32	1.45	1.45	1.45	1.46	1.61	1.61	1.61	1.62	1.80	1.80	1.80	1.80
	Amps	4.0	4.0	4.0	4.1	4.6	4.6	4.6	4.6	5.2	5.2	5.2	5.2	5.8	5.8	5.8	5.9	6.6	6.6	6.6	6.6	7.4	7.4	7.4	7.4
	HI PR	247	248	250	254	286	287	288	293	326	327	329	333	370	371	372	377	417	418	419	424	467	468	469	474
	LO PR	127	128	132	137	134	136	139	144	141	143	146	151	147	148	151	157	152	154	157	162	159	161	164	169
	MBh	18.4	18.6	19.2	20.0	18.2	18.5	19.0	19.8	17.8	18.0	18.5	19.4	17.0	17.2	17.7	18.6	16.0	16.2	16.8	17.6	15.1	15.3	15.9	16.7
75	S/T	0.85	0.77	0.63	0.49	1.00	0.78	0.64	0.49	1.00	0.81	0.67	0.52	1.00	0.83	0.69	0.54	1.00	1.00	0.71	0.56	1.00	1.00	0.76	0.62
	ΔT	21	19	16	13	21	19	16	13	21	20	16	13	21	19	16	13	21	19	16	12	22	20	17	13
	kW	1.07	1.06	1.06	1.07	1.18	1.18	1.18	1.19	1.32	1.31	1.31	1.32	1.46	1.46	1.45	1.46	1.62	1.62	1.61	1.62	1.80	1.80	1.80	1.81
	Amps	4.1	4.0	4.0	4.1	4.6	4.6	4.6	4.6	5.2	5.2	5.2	5.2	5.8	5.8	5.8	5.9	6.6	6.6	6.6	6.6	7.4	7.4	7.4	7.5
	HI PR	249	250	251	256	287	288	290	294	328	329	331	335	371	372	374	378	418	419	421	425	468	469	471	475
LO PR	129	130	133	139	136	138	141	146	143	144	147	153	148	150	153	158	154	155	159	164	161	162	166	171	

IDB: Entering Indoor Dry Bulb Temperature
 High and low pressures are measured at the liquid and suction service valves.
 Shaded area reflects ACCA (TVA) Rating Conditions.
 kW = Total system power
 Amps = Outdoor unit amps (compressor + fan)

IDB	AIRFLOW	OUTDOOR AMBIENT TEMPERATURE												ENTERING INDOOR WET BULB TEMPERATURE											
		65°F				75°F				85°F				95°F				105°F				115°F			
		59	63	67	71	59	63	67	71	59	63	67	71	59	63	67	71	59	63	67	71	59	63	67	71
70	MBh	23.7	24.0	24.7	-	23.4	23.8	24.5	-	22.8	23.2	23.9	-	21.7	22.1	22.8	-	20.4	20.8	21.5	-	19.2	19.6	20.3	-
	S/T	0.59	0.51	0.37	-	0.60	0.52	0.37	-	0.62	0.54	0.40	-	0.65	0.56	0.42	-	1.00	0.59	0.44	-	1.00	0.64	0.50	-
	ΔT	19	17	14	-	19	17	14	-	19	17	14	-	19	17	14	-	19	17	14	-	20	18	15	-
	kW	1.41	1.40	1.40	-	1.57	1.57	1.57	-	1.76	1.76	1.75	-	1.96	1.96	1.95	-	2.18	2.18	2.18	-	2.44	2.44	2.44	-
	Amps	5.2	5.2	5.2	-	6.0	5.9	5.9	-	6.8	6.8	6.8	-	7.7	7.7	7.7	-	8.7	8.7	8.7	-	9.9	9.9	9.9	-
	HI/PR	249	250	252	-	288	290	291	-	330	331	333	-	374	375	377	-	422	423	425	-	474	475	476	-
	LO/PR	123	124	128	-	130	132	135	-	137	139	142	-	143	144	147	-	148	150	153	-	155	157	160	-
800	MBh	23.9	24.2	25.0	-	23.7	24.0	24.7	-	23.1	23.4	24.1	-	22.0	22.3	23.1	-	20.7	21.0	21.7	-	19.5	19.8	20.6	-
	S/T	0.67	0.59	0.44	-	0.67	0.59	0.45	-	0.70	0.62	0.48	-	1.00	0.64	0.50	-	1.00	0.66	0.52	-	1.00	0.72	0.58	-
	ΔT	18	16	13	-	18	16	13	-	18	16	13	-	18	16	13	-	18	16	13	-	19	17	14	-
	kW	1.41	1.41	1.41	-	1.58	1.58	1.58	-	1.77	1.76	1.76	-	1.97	1.96	1.96	-	2.19	2.19	2.19	-	2.45	2.45	2.45	-
	Amps	5.2	5.2	5.2	-	6.0	6.0	6.0	-	6.8	6.8	6.8	-	7.8	7.8	7.7	-	8.8	8.8	8.8	-	10.0	10.0	10.0	-
	HI/PR	251	252	254	-	290	292	293	-	332	333	335	-	376	377	379	-	424	426	427	-	476	477	479	-
	LO/PR	125	126	129	-	132	134	137	-	139	140	143	-	144	146	149	-	150	151	154	-	157	158	161	-
870	MBh	24.1	24.5	25.2	-	23.9	24.2	25.0	-	23.3	23.6	24.3	-	22.2	22.6	23.3	-	20.9	21.2	22.0	-	19.7	20.1	20.8	-
	S/T	0.71	0.62	0.48	-	0.71	0.63	0.49	-	0.74	0.66	0.51	-	1.00	0.68	0.53	-	1.00	0.70	0.56	-	1.00	0.76	0.61	-
	ΔT	17	16	12	-	17	15	12	-	17	16	13	-	17	15	12	-	17	15	12	-	18	16	13	-
	kW	1.42	1.42	1.42	-	1.59	1.58	1.58	-	1.77	1.77	1.77	-	1.97	1.97	1.97	-	2.20	2.19	2.19	-	2.46	2.46	2.45	-
	Amps	5.3	5.3	5.2	-	6.0	6.0	6.0	-	6.9	6.9	6.8	-	7.8	7.8	7.8	-	8.8	8.8	8.8	-	10.0	10.0	10.0	-
	HI/PR	252	253	255	-	292	293	295	-	333	334	336	-	378	379	381	-	426	427	429	-	477	478	480	-
	LO/PR	126	127	130	-	133	135	138	-	140	141	145	-	145	147	150	-	151	152	156	-	158	159	163	-

700	MBh	23.7	24.0	24.7	25.8	23.5	23.8	24.5	25.6	22.8	23.2	23.9	25.0	21.8	22.1	22.8	23.9	20.5	20.8	21.5	22.6	19.3	19.6	20.3	21.4
	S/T	0.73	0.65	0.50	0.35	0.73	0.65	0.51	0.36	1.00	0.68	0.54	0.39	1.00	0.70	0.56	0.41	1.00	0.80	0.66	0.51	1.00	1.00	0.71	0.56
	ΔT	23	21	18	15	23	21	18	14	23	21	18	15	23	21	18	14	22	21	17	14	23	22	19	15
	kW	1.40	1.40	1.40	1.41	1.57	1.57	1.57	1.58	1.76	1.75	1.75	1.76	1.96	1.96	1.95	1.96	2.18	2.18	2.18	2.19	2.44	2.44	2.44	2.45
	Amps	5.2	5.2	5.2	5.2	5.9	5.9	5.9	6.0	6.8	6.8	6.8	6.8	7.7	7.7	7.7	7.8	8.7	8.7	8.7	8.8	9.9	9.9	9.9	10.0
	HI/PR	249	250	252	256	289	290	291	296	330	331	333	337	375	375	377	382	423	424	425	430	474	475	477	481
	LO/PR	123	125	128	133	131	132	135	140	137	139	142	147	143	144	147	153	148	150	153	158	155	157	160	165
800	MBh	23.9	24.3	25.0	26.1	23.7	24.0	24.8	25.8	23.1	23.4	24.1	25.2	22.0	22.4	23.1	24.2	20.7	21.1	21.8	22.8	19.5	19.9	20.6	21.7
	S/T	0.80	0.72	0.58	0.43	0.81	0.73	0.59	0.44	1.00	0.76	0.61	0.46	1.00	0.78	0.63	0.48	1.00	0.80	0.66	0.51	1.00	1.00	0.71	0.56
	ΔT	22	20	17	13	21	20	17	13	22	20	17	14	21	20	17	13	21	20	16	13	22	21	17	14
	kW	1.41	1.41	1.41	1.42	1.58	1.58	1.58	1.59	1.76	1.76	1.76	1.77	1.96	1.96	1.96	1.97	2.19	2.19	2.18	2.20	2.45	2.45	2.45	2.46
	Amps	5.2	5.2	5.2	5.3	6.0	6.0	6.0	6.0	6.8	6.8	6.8	6.9	7.8	7.7	7.7	7.8	8.8	8.8	8.8	8.8	10.0	10.0	10.0	10.0
	HI/PR	251	252	254	258	291	292	294	298	332	333	335	339	377	378	379	384	425	426	427	432	476	477	479	483
	LO/PR	125	126	129	135	132	134	137	142	139	140	143	149	144	146	149	154	150	151	154	160	157	158	161	167
870	MBh	24.1	24.5	25.2	26.3	23.9	24.3	25.0	26.1	23.3	23.6	24.3	25.4	22.2	22.6	23.3	24.4	20.9	21.3	22.0	23.1	19.7	20.1	20.8	21.9
	S/T	0.84	0.76	0.62	0.47	1.00	0.77	0.62	0.47	1.00	0.79	0.65	0.50	1.00	0.82	0.67	0.52	1.00	0.84	0.69	0.54	1.00	1.00	0.75	0.60
	ΔT	21	19	16	13	21	19	16	13	21	19	16	13	21	19	16	13	21	19	16	13	22	20	17	14
	kW	1.42	1.42	1.41	1.43	1.58	1.58	1.58	1.59	1.77	1.77	1.77	1.78	1.97	1.97	1.97	1.98	2.19	2.19	2.19	2.20	2.46	2.46	2.45	2.47
	Amps	5.3	5.2	5.2	5.3	6.0	6.0	6.0	6.1	6.9	6.9	6.8	6.9	7.8	7.8	7.8	7.8	8.8	8.8	8.8	8.8	10.0	10.0	10.0	10.0
	HI/PR	253	254	255	260	292	293	295	299	333	335	336	341	378	379	381	385	426	427	429	433	477	478	480	484
	LO/PR	126	127	130	136	133	135	138	143	140	141	145	150	146	147	150	155	151	153	156	161	158	159	163	168

IDB: Entering Indoor Dry Bulb Temperature
 High and low pressures are measured at the liquid and suction service valves.
 Shaded area reflects ACCA (TVA) Rating Conditions.
 Amps = Outdoor unit amps (compressor + fan)
 kW = Total system power

IDB	AIRFLOW	OUTDOOR AMBIENT TEMPERATURE																								
		65°F				75°F				85°F				95°F				105°F				115°F				
		59	63	67	71	59	63	67	71	59	63	67	71	59	63	67	71	59	63	67	71	59	63	67	71	
80	700	MBh	23.8	24.1	24.8	25.9	23.6	23.9	24.6	25.7	23.0	23.3	24.0	25.1	21.9	22.2	22.9	24.0	20.6	20.9	21.6	22.7	19.4	19.7	20.4	21.5
		S/T	1.00	0.78	0.64	0.49	1.00	0.79	0.64	0.49	1.00	0.81	0.67	0.52	1.00	0.83	0.69	0.54	1.00	1.00	0.71	0.56	1.00	1.00	0.77	0.62
	ΔT	26	25	22	18	26	25	21	18	27	25	22	18	26	25	21	18	26	24	21	18	27	25	22	19	
	kW	1.41	1.40	1.40	1.41	1.57	1.57	1.57	1.58	1.76	1.76	1.75	1.76	1.96	1.96	1.95	1.97	2.18	2.18	2.18	2.19	2.44	2.44	2.44	2.45	
	Amps	5.2	5.2	5.2	5.2	6.0	5.9	5.9	6.0	6.8	6.8	6.8	6.8	7.7	7.7	7.7	7.8	8.7	8.7	8.7	8.8	9.9	9.9	9.9	10.0	
	HI-PR	250	251	252	257	289	290	292	296	330	332	333	338	375	376	378	382	423	424	426	430	474	475	477	482	
	LO-PR	124	125	128	133	131	133	136	141	138	139	142	148	143	145	148	153	149	150	153	159	156	157	160	166	
	MBh	24.0	24.4	25.1	26.2	23.8	24.2	24.9	26.0	23.2	23.6	24.3	25.3	22.1	22.5	23.2	24.3	20.8	21.2	21.9	23.0	19.6	20.0	20.7	21.8	
	S/T	1.00	0.86	0.71	0.56	1.00	0.86	0.72	0.57	1.00	0.89	0.75	0.59	1.00	1.00	0.77	0.62	1.00	1.00	0.79	0.64	1.00	1.00	0.84	0.69	
	ΔT	25	24	20	17	25	24	20	17	25	24	21	17	25	24	20	17	25	23	20	17	26	24	21	18	
kW	1.41	1.41	1.41	1.42	1.58	1.58	1.58	1.59	1.77	1.76	1.76	1.77	1.97	1.96	1.96	1.97	2.19	2.19	2.19	2.20	2.45	2.45	2.45	2.46		
Amps	5.2	5.2	5.2	5.3	6.0	6.0	6.0	6.0	6.8	6.8	6.8	6.9	7.8	7.8	7.7	7.8	8.8	8.8	8.8	8.8	10.0	10.0	10.0	10.0		
HI-PR	252	253	255	259	291	292	294	298	333	334	335	340	377	378	380	384	425	426	428	432	476	477	479	484		
LO-PR	125	127	130	135	133	134	137	143	139	141	144	149	145	146	150	155	150	152	155	160	157	159	162	167		
MBh	24.3	24.6	25.3	26.4	24.0	24.4	25.1	26.2	23.4	23.8	24.5	25.6	22.4	22.7	23.4	24.5	21.0	21.4	22.1	23.2	19.9	20.2	20.9	22.0		
S/T	1.00	0.89	0.75	0.60	1.00	0.90	0.76	0.61	1.00	0.93	0.78	0.63	1.00	1.00	0.80	0.65	1.00	1.00	0.83	0.68	1.00	1.00	0.88	0.73		
ΔT	25	23	20	17	25	23	20	17	25	23	20	17	25	23	20	16	24	23	20	16	25	24	21	17		
kW	1.42	1.42	1.42	1.43	1.59	1.58	1.58	1.59	1.77	1.77	1.77	1.78	1.97	1.97	1.97	1.98	2.19	2.19	2.19	2.20	2.46	2.46	2.45	2.47		
Amps	5.3	5.3	5.2	5.3	6.0	6.0	6.0	6.1	6.9	6.9	6.8	6.9	7.8	7.8	7.8	7.8	8.8	8.8	8.8	8.8	10.0	10.0	10.0	10.0		
HI-PR	253	254	256	260	293	294	295	300	334	335	337	341	378	380	381	386	426	428	429	434	478	479	481	485		
LO-PR	126	128	131	136	134	135	139	144	140	142	145	150	146	148	151	156	152	153	156	161	158	160	163	168		

85	700	MBh	24.2	24.5	25.2	26.3	24.0	24.3	25.0	26.1	23.4	23.7	24.4	25.5	22.3	22.6	23.3	24.4	21.0	21.3	22.0	23.1	19.8	20.1	20.8	21.9
		S/T	1.00	0.89	0.74	0.59	1.00	0.89	0.75	0.60	1.00	1.00	0.78	0.63	1.00	1.00	0.80	0.65	1.00	1.00	0.82	0.67	1.00	1.00	1.00	0.72
	ΔT	30	28	25	22	30	28	25	22	30	28	25	22	30	28	25	21	29	28	25	21	30	29	26	22	
	kW	1.41	1.41	1.40	1.42	1.57	1.57	1.57	1.58	1.76	1.76	1.76	1.77	1.96	1.96	1.96	1.97	2.18	2.18	2.18	2.19	2.45	2.45	2.44	2.45	
	Amps	5.2	5.2	5.2	5.2	6.0	6.0	5.9	6.0	6.8	6.8	6.8	6.9	7.7	7.7	7.7	7.8	8.8	8.7	8.7	8.8	10.0	10.0	9.9	10.0	
	HI-PR	251	252	254	258	290	291	293	297	332	333	334	339	376	377	379	383	424	425	427	431	475	477	478	483	
	LO-PR	125	127	130	135	133	134	138	143	140	141	144	149	145	147	150	155	151	152	155	161	157	159	162	167	
	MBh	24.5	24.8	25.5	26.6	24.2	24.6	25.3	26.4	23.6	24.0	24.7	25.7	22.5	22.9	23.6	24.7	21.2	21.6	22.3	23.4	20.0	20.4	21.1	22.2	
	S/T	1.00	0.96	0.82	0.67	1.00	1.00	0.83	0.68	1.00	1.00	0.85	0.70	1.00	1.00	0.87	0.72	1.00	1.00	0.90	0.75	1.00	1.00	1.00	0.80	
	ΔT	29	27	24	20	29	27	24	20	29	27	24	21	29	27	24	20	28	27	23	20	29	28	25	21	
kW	1.42	1.42	1.42	1.43	1.58	1.58	1.58	1.59	1.77	1.77	1.77	1.78	1.97	1.97	1.96	1.98	2.19	2.19	2.19	2.20	2.46	2.45	2.45	2.46		
Amps	5.2	5.2	5.2	5.3	6.0	6.0	6.0	6.0	6.9	6.8	6.8	6.9	7.8	7.8	7.8	7.8	8.8	8.8	8.8	8.8	10.0	10.0	10.0	10.0		
HI-PR	253	254	256	260	292	293	295	300	334	335	337	341	378	379	381	385	426	427	429	433	478	479	480	485		
LO-PR	127	129	132	137	135	136	139	144	141	143	146	151	147	148	151	157	152	154	157	162	159	161	164	169		
MBh	24.7	25.0	25.7	26.8	24.4	24.8	25.5	26.6	23.8	24.2	24.9	26.0	22.8	23.1	23.8	24.9	21.4	21.8	22.5	23.6	20.3	20.6	21.3	22.4		
S/T	1.00	1.00	0.86	0.71	1.00	1.00	0.86	0.71	1.00	1.00	0.89	0.74	1.00	1.00	0.91	0.76	1.00	1.00	0.93	0.78	1.00	1.00	1.00	0.84		
ΔT	28	26	23	20	28	26	23	20	28	26	23	20	28	26	23	20	28	26	23	20	29	27	24	21		
kW	1.42	1.42	1.42	1.43	1.59	1.59	1.58	1.60	1.77	1.77	1.77	1.78	1.97	1.97	1.97	1.98	2.20	2.20	2.19	2.21	2.46	2.46	2.46	2.47		
Amps	5.3	5.3	5.3	5.3	6.0	6.0	6.0	6.1	6.9	6.9	6.9	6.9	7.8	7.8	7.8	7.8	8.8	8.8	8.8	8.9	10.0	10.0	10.0	10.1		
HI-PR	254	255	257	261	294	295	297	301	335	336	338	342	380	381	382	387	428	429	430	435	479	480	482	486		
LO-PR	128	130	133	138	136	137	140	146	142	144	147	152	148	149	153	158	153	155	158	163	160	162	165	170		

IDB: Entering Indoor Dry Bulb Temperature
 High and low pressures are measured at the liquid and suction service valves.
 Shaded area reflects AHRI Rating Conditions.
 kW = Total system power
 Amps = Outdoor unit amps (compressor + fan)

		OUTDOOR AMBIENT TEMPERATURE																																														
		65°F						75°F						85°F						95°F						105°F						115°F																
		AIRFLOW		59		63		67		71		59		63		67		71		59		63		67		71		59		63		67		71														
		MBh	S/T	ΔT	kW	Amps	HI/PR	LO/PR	28.4	28.8	29.7	28.2	28.6	29.4	27.5	27.9	28.7	26.2	26.6	27.4	24.7	25.1	25.9	23.3	23.6	24.5	23.3	23.6	24.5	21.0	21.3	22.1	19.4	19.7	20.5	17.8	18.1	18.9										
70	870																																															
	1000																																															
	1125																																															

75	870																																																																				
	1000																																																																				
	1125																																																																				

IDB: Entering Indoor Dry Bulb Temperature
 High and low pressures are measured at the liquid and suction service valves.
 Shaded area reflects ACCA (TVA) Rating Conditions.
 Amps = Outdoor unit amps (compressor + fan)
 kW = Total system power

IDB	AIRFLOW	OUTDOOR AMBIENT TEMPERATURE												105°F												115°F											
		65°F				75°F				85°F				95°F				105°F				115°F															
		59	63	67	71	59	63	67	71	59	63	67	71	59	63	67	71	59	63	67	71	59	63	67	71												
80	1070	MBh	36.5	37.0	38.1	39.7	36.2	36.7	37.7	39.4	35.2	35.7	36.8	38.4	33.6	34.1	35.2	36.8	31.7	32.2	33.2	34.9	29.9	30.4	31.4	33.1											
		S/T	0.90	0.82	0.69	0.55	1.00	0.83	0.70	0.56	1.00	0.85	0.72	0.58	1.00	0.87	0.74	0.60	1.00	1.00	0.76	0.62	1.00	1.00	0.81	0.67											
	ΔT	28	26	22	19	28	26	22	19	28	26	23	19	28	26	22	19	28	26	22	18	29	27	23	20												
	kW	2.17	2.17	2.16	2.18	2.43	2.43	2.43	2.45	2.73	2.73	2.72	2.74	3.05	3.05	3.04	3.06	3.41	3.41	3.40	3.42	3.83	3.83	3.82	3.84												
	Amps	8.3	8.3	8.2	8.3	9.5	9.5	9.5	9.6	10.8	10.8	10.8	10.9	12.3	12.3	12.3	12.4	13.9	13.9	13.9	14.0	15.9	15.9	15.8	15.9												
	HI PR	264	265	267	272	305	306	308	313	349	350	351	356	395	396	398	403	445	446	448	453	499	500	502	506												
	LO PR	122	123	127	132	129	131	134	139	136	137	140	145	141	143	146	151	146	148	151	156	153	154	157	163												
	MBh	37.0	37.5	38.6	40.2	36.7	37.2	38.3	39.9	35.8	36.3	37.4	39.0	34.2	34.7	35.7	37.4	32.2	32.7	33.8	35.4	30.4	30.9	32.0	33.6												
	S/T	1.00	0.86	0.72	0.58	1.00	0.86	0.73	0.59	1.00	0.89	0.75	0.61	1.00	0.90	0.77	0.63	1.00	1.00	0.79	0.65	1.00	1.00	0.84	0.71												
	ΔT	27	25	21	18	27	25	21	18	27	25	22	18	27	25	21	18	27	25	21	17	28	26	22	19												
kW	2.18	2.18	2.17	2.19	2.45	2.44	2.44	2.46	2.74	2.74	2.74	2.76	3.06	3.06	3.06	3.08	3.42	3.42	3.41	3.43	3.84	3.84	3.83	3.85													
Amps	8.3	8.3	8.3	8.4	9.5	9.5	9.5	9.6	10.9	10.9	10.9	11.0	12.4	12.4	12.3	12.4	14.0	14.0	14.0	14.1	15.9	15.9	15.9	16.0													
HI PR	266	267	269	274	307	309	310	315	351	352	354	358	397	398	400	405	447	448	450	455	501	502	504	508													
LO PR	124	125	128	133	131	133	136	141	138	139	142	147	143	144	147	153	148	150	153	158	155	156	159	164													
MBh	37.8	38.3	39.4	41.0	37.5	38.0	39.1	40.7	36.5	37.1	38.1	39.8	34.9	35.4	36.5	38.1	33.0	33.5	34.5	36.2	31.2	31.7	32.8	34.4													
S/T	1.00	0.87	0.73	0.60	1.00	0.87	0.74	0.60	1.00	0.90	0.77	0.63	1.00	1.00	0.78	0.64	1.00	1.00	0.81	0.67	1.00	1.00	0.86	0.72													
ΔT	26	24	20	17	26	24	20	17	26	24	21	17	26	24	20	17	26	24	20	16	27	25	21	18													
kW	2.19	2.19	2.19	2.21	2.46	2.46	2.45	2.47	2.75	2.75	2.75	2.77	3.07	3.07	3.07	3.09	3.43	3.43	3.42	3.44	3.85	3.85	3.84	3.86													
Amps	8.4	8.4	8.4	8.4	9.6	9.6	9.6	9.7	10.9	10.9	10.9	11.0	12.4	12.4	12.4	12.5	14.0	14.0	14.0	14.1	16.0	16.0	15.9	16.0													
HI PR	269	270	272	276	310	311	313	317	353	354	356	361	400	401	403	407	450	451	453	457	503	504	506	511													
LO PR	126	128	131	136	134	135	138	143	140	142	145	150	145	147	150	155	151	152	155	160	157	159	162	167													
85	1070	MBh	37.1	37.6	38.7	40.3	36.8	37.3	38.3	40.0	35.8	36.3	37.4	39.0	34.2	34.7	35.8	37.4	32.3	32.8	33.8	35.5	30.5	31.0	32.0	33.7											
		S/T	1.00	0.92	0.79	0.65	1.00	0.93	0.80	0.66	1.00	1.00	0.82	0.68	1.00	1.00	0.84	0.70	1.00	1.00	0.86	0.72	1.00	1.00	1.00	0.77											
	ΔT	32	30	26	22	32	30	26	22	32	30	26	23	31	30	26	22	31	29	26	22	32	31	27	23												
	kW	2.17	2.17	2.17	2.19	2.44	2.44	2.43	2.45	2.74	2.73	2.73	2.75	3.06	3.05	3.05	3.07	3.41	3.41	3.41	3.43	3.83	3.83	3.83	3.85												
	Amps	8.3	8.3	8.3	8.4	9.5	9.5	9.5	9.6	10.9	10.9	10.8	10.9	12.3	12.3	12.3	12.4	14.0	14.0	13.9	14.0	15.9	15.9	15.9	16.0												
	HI PR	265	266	268	273	307	308	310	314	350	351	353	357	396	397	399	404	446	448	449	454	500	501	503	507												
	LO PR	124	125	128	133	131	133	136	141	137	139	142	147	143	144	147	152	148	150	153	158	155	156	159	164												
	MBh	37.6	38.1	39.2	40.8	37.3	37.8	38.9	40.5	36.4	36.9	38.0	39.6	34.8	35.3	36.4	38.0	32.8	33.3	34.4	36.0	31.0	31.5	32.6	34.2												
	S/T	1.00	0.95	0.82	0.68	1.00	0.96	0.83	0.69	1.00	1.00	0.85	0.71	1.00	1.00	0.87	0.73	1.00	1.00	0.89	0.75	1.00	1.00	1.00	0.80												
	ΔT	31	29	25	21	31	29	25	21	31	29	25	22	31	29	25	21	30	28	25	21	31	30	26	22												
kW	2.19	2.18	2.18	2.20	2.45	2.45	2.44	2.46	2.75	2.74	2.74	2.76	3.07	3.06	3.06	3.08	3.42	3.42	3.42	3.44	3.84	3.84	3.84	3.86													
Amps	8.4	8.3	8.3	8.4	9.6	9.6	9.5	9.6	10.9	10.9	10.9	11.0	12.4	12.4	12.4	12.4	14.0	14.0	14.0	14.1	15.9	15.9	15.9	16.0													
HI PR	267	269	270	275	309	310	312	316	352	353	355	359	398	399	401	406	448	450	451	456	502	503	505	509													
LO PR	126	127	130	135	133	134	137	143	139	141	144	149	145	146	149	154	150	151	155	160	157	158	161	166													
MBh	38.4	38.9	40.0	41.6	38.1	38.6	39.7	41.3	37.2	37.7	38.7	40.4	35.5	36.0	37.1	38.8	33.6	34.1	35.2	36.8	31.8	32.3	33.4	35.0													
S/T	1.00	0.97	0.83	0.69	1.00	1.00	0.84	0.70	1.00	1.00	0.86	0.72	1.00	1.00	0.88	0.74	1.00	1.00	0.90	0.77	1.00	1.00	1.00	0.82													
ΔT	30	28	24	21	30	28	24	20	30	28	24	21	30	28	24	20	29	27	24	20	31	29	25	21													
kW	2.20	2.20	2.19	2.21	2.46	2.46	2.46	2.48	2.76	2.76	2.75	2.77	3.08	3.08	3.07	3.09	3.44	3.43	3.43	3.45	3.86	3.85	3.85	3.87													
Amps	8.4	8.4	8.4	8.5	9.6	9.6	9.6	9.7	11.0	11.0	10.9	11.0	12.4	12.4	12.4	12.5	14.1	14.1	14.0	14.1	16.0	16.0	16.0	16.1													
HI PR	270	271	273	277	311	312	314	319	354	355	357	362	401	402	404	408	451	452	454	458	504	506	507	512													
LO PR	128	130	133	138	135	137	140	145	142	143	146	151	147	149	152	157	153	154	157	162	159	161	164	169													

IDB: Entering Indoor Dry Bulb Temperature
 High and low pressures are measured at the liquid and suction service valves.
 Shaded area reflects AHRI Rating Conditions.
 kW = Total system power
 Amps = Outdoor unit amps (compressor + fan)

IDB		OUTDOOR AMBIENT TEMPERATURE												115°F																	
		65°F						75°F						85°F						95°F						105°F					
		AIRFLOW		59	63	67	71	59	63	67	71	59	63	67	71	59	63	67	71	59	63	67	71	59	63	67	71				
70	1400	MBh	45.9	46.5	47.9	-	45.5	46.1	47.5	-	44.3	44.9	46.3	-	42.2	42.9	44.2	-	39.7	40.4	41.7	-	37.4	38.1	39.4	-					
		S/T	0.64	0.56	0.42	-	0.65	0.57	0.43	-	0.67	0.59	0.45	-	0.69	0.61	0.47	-	1.00	0.64	0.50	-	1.00	0.69	0.55	-					
		ΔT	19	17	14	-	19	17	14	-	19	17	14	-	19	17	14	-	19	17	14	-	20	18	15	-					
		kW	2.79	2.78	2.78	-	3.11	3.10	3.10	-	3.46	3.46	3.46	-	3.85	3.85	3.84	-	4.28	4.28	4.28	-	4.79	4.79	4.78	-					
		Amps	10.2	10.2	10.2	-	11.7	11.7	11.6	-	13.3	13.3	13.3	-	15.1	15.1	15.0	-	17.1	17.0	17.0	-	19.4	19.4	19.3	-					
		HI/PR	256	257	259	-	296	297	299	-	338	339	341	-	384	385	387	-	433	434	436	-	485	486	488	-					
	LO/PR	122	124	127	-	130	131	134	-	136	138	141	-	142	143	146	-	147	149	152	-	154	156	159	-						
	MBh	46.4	47.0	48.4	-	46.0	46.6	48.0	-	44.8	45.4	46.8	-	42.7	43.4	44.7	-	40.2	40.9	42.2	-	37.9	38.6	39.9	-						
	S/T	0.69	0.61	0.47	-	0.69	0.62	0.48	-	0.72	0.64	0.50	-	1.00	0.66	0.52	-	1.00	0.69	0.54	-	1.00	0.74	0.60	-						
	ΔT	18	16	13	-	18	16	13	-	18	16	13	-	18	16	13	-	18	16	13	-	19	17	14	-						
	kW	2.80	2.80	2.79	-	3.12	3.12	3.11	-	3.48	3.48	3.47	-	3.87	3.86	3.86	-	4.30	4.30	4.29	-	4.80	4.80	4.80	-						
	Amps	10.3	10.3	10.2	-	11.7	11.7	11.7	-	13.4	13.4	13.3	-	15.1	15.1	15.1	-	17.1	17.1	17.1	-	19.4	19.4	19.4	-						
HI/PR	258	259	260	-	298	299	301	-	340	341	343	-	386	387	388	-	435	436	437	-	487	488	490	-							
LO/PR	124	125	129	-	131	133	136	-	138	139	142	-	143	145	148	-	149	150	153	-	155	157	160	-							
MBh	47.3	47.9	49.3	-	46.9	47.5	48.9	-	45.7	46.3	47.7	-	43.6	44.3	45.6	-	41.1	41.8	43.1	-	38.8	39.5	40.8	-							
S/T	0.73	0.65	0.51	-	0.73	0.66	0.52	-	0.76	0.68	0.54	-	1.00	0.70	0.56	-	1.00	0.72	0.58	-	1.00	0.78	0.64	-							
ΔT	17	15	12	-	17	15	12	-	17	15	12	-	17	15	12	-	17	15	12	-	18	16	13	-							
kW	2.82	2.81	2.81	-	3.14	3.14	3.13	-	3.50	3.49	3.49	-	3.88	3.88	3.87	-	4.31	4.31	4.31	-	4.82	4.82	4.81	-							
Amps	10.3	10.3	10.3	-	11.8	11.8	11.8	-	13.4	13.4	13.4	-	15.2	15.2	15.2	-	17.2	17.2	17.2	-	19.5	19.5	19.5	-							
HI/PR	260	261	263	-	300	302	303	-	343	344	346	-	388	389	391	-	437	438	440	-	489	491	492	-							
LO/PR	126	128	131	-	134	135	138	-	140	142	145	-	146	147	150	-	151	153	156	-	158	159	163	-							
75	1400	MBh	45.9	46.6	47.9	50.0	45.5	46.1	47.5	49.6	44.3	45.0	46.3	48.4	42.2	42.9	44.3	46.4	39.7	40.4	41.7	43.8	37.4	38.1	39.5	41.5					
		S/T	0.77	0.69	0.55	0.41	0.78	0.70	0.56	0.41	1.00	0.73	0.59	0.44	1.00	0.75	0.61	0.46	1.00	0.77	0.63	0.48	1.00	1.00	0.68	0.54					
		ΔT	23	21	18	14	23	21	18	14	23	21	18	14	23	21	18	14	22	20	17	14	24	22	19	15					
		kW	2.79	2.78	2.78	2.80	3.11	3.10	3.10	3.12	3.46	3.46	3.45	3.48	3.85	3.85	3.84	3.87	4.28	4.28	4.27	4.30	4.79	4.79	4.78	4.81					
		Amps	10.2	10.2	10.2	10.3	11.7	11.6	11.6	11.7	13.3	13.3	13.3	13.4	15.1	15.1	15.0	15.1	17.0	17.0	17.0	17.1	19.4	19.4	19.3	19.4					
		HI/PR	256	257	259	263	296	297	299	304	339	340	341	346	384	385	387	391	433	434	436	440	485	486	488	493					
	LO/PR	122	124	127	132	130	131	134	140	136	138	141	146	142	143	146	152	147	149	152	157	154	156	159	164						
	MBh	46.4	47.1	48.4	50.5	46.0	46.6	48.0	50.1	44.8	45.5	46.8	48.9	42.7	43.4	44.8	46.9	40.2	40.9	42.2	44.3	37.9	38.6	40.0	42.0						
	S/T	0.82	0.74	0.60	0.46	0.83	0.75	0.61	0.46	1.00	0.78	0.64	0.49	1.00	0.80	0.66	0.51	1.00	0.82	0.68	0.53	1.00	1.00	0.73	0.58						
	ΔT	22	20	17	13	22	20	17	13	22	20	17	14	22	20	17	13	22	20	17	13	23	21	18	14						
	kW	2.80	2.80	2.79	2.81	3.12	3.12	3.11	3.14	3.48	3.47	3.47	3.49	3.86	3.86	3.86	3.88	4.30	4.29	4.29	4.31	4.80	4.80	4.79	4.82						
	Amps	10.3	10.2	10.2	10.3	11.7	11.7	11.7	11.8	13.4	13.3	13.3	13.4	15.1	15.1	15.1	15.2	17.1	17.1	17.1	17.2	19.4	19.4	19.4	19.5						
HI/PR	258	259	261	265	298	299	301	305	340	341	343	348	386	387	389	393	435	436	438	442	487	488	490	494							
LO/PR	124	125	129	134	131	133	136	141	138	139	142	148	143	145	148	153	149	150	153	159	156	157	160	165							
MBh	47.3	48.0	49.3	51.4	46.9	47.6	48.9	51.0	45.7	46.4	47.7	49.8	43.7	44.3	45.7	47.8	41.1	41.8	43.2	45.2	38.8	39.5	40.9	43.0							
S/T	0.86	0.78	0.64	0.50	1.00	0.79	0.65	0.50	1.00	0.82	0.68	0.53	1.00	0.84	0.70	0.55	1.00	0.86	0.72	0.57	1.00	1.00	0.77	0.62							
ΔT	21	19	16	12	21	19	16	12	21	19	16	13	21	19	16	12	21	19	15	12	22	20	17	13							
kW	2.82	2.81	2.81	2.83	3.14	3.13	3.13	3.15	3.49	3.49	3.49	3.51	3.88	3.88	3.87	3.90	4.31	4.30	4.30	4.33	4.82	4.82	4.81	4.84							
Amps	10.3	10.3	10.3	10.4	11.8	11.8	11.8	11.9	13.4	13.4	13.4	13.5	15.2	15.2	15.2	15.3	17.2	17.2	17.2	17.3	19.5	19.5	19.5	19.6							
HI/PR	260	261	263	268	301	302	304	308	343	344	346	350	388	389	391	396	437	438	440	445	490	491	493	497							
LO/PR	126	128	131	136	134	135	138	144	140	142	145	150	146	147	150	156	151	153	156	161	158	159	163	168							

IDB: Entering Indoor Dry Bulb Temperature
 High and low pressures are measured at the liquid and suction service valves.
 Shaded area reflects ACCA (TVA) Rating Conditions.
 Amps = Outdoor unit amps (compressor + fan)
 kW = Total system power

IDB	AIRFLOW	OUTDOOR AMBIENT TEMPERATURE										ENTERING INDOOR WET BULB TEMPERATURE																			
		65°F					75°F					85°F					95°F					105°F					115°F				
		59	63	67	71	75	59	63	67	71	75	59	63	67	71	75	59	63	67	71	75	59	63	67	71	75	59	63	67	71	75
80	MBh	46.1	46.8	48.2	50.2	45.7	46.4	47.8	49.8	44.5	45.2	46.6	48.6	42.5	43.1	44.5	46.6	40.0	40.6	42.0	44.1	37.7	38.3	39.7	41.8						
	S/T	1.00	0.82	0.68	0.54	1.00	0.83	0.69	0.54	1.00	0.86	0.72	0.57	1.00	0.88	0.74	0.59	1.00	1.00	0.76	0.61	1.00	1.00	0.81	0.66						
	Delta T	2.7	2.5	2.2	1.8	2.7	2.5	2.2	1.8	2.7	2.5	2.2	1.8	2.7	2.5	2.2	1.8	2.6	2.5	2.1	1.8	2.7	2.6	2.2	1.9						
	KW	2.79	2.78	2.78	2.80	3.11	3.10	3.10	3.12	3.46	3.36	3.46	3.48	3.85	3.85	3.84	3.87	4.28	4.28	4.28	4.30	4.79	4.79	4.78	4.81						
	AMPS	10.2	10.2	10.2	10.3	11.7	11.7	11.6	11.7	13.3	13.3	13.3	13.4	15.1	15.1	15.0	15.1	17.1	17.0	17.0	17.1	19.4	19.4	19.3	19.4						
	HI PR	256	258	259	264	297	298	300	304	333	340	342	346	384	386	387	392	433	435	436	441	486	487	489	493						
	LO PR	123	124	128	133	130	132	135	140	137	138	142	147	142	144	147	152	148	149	152	158	155	156	159	164						
	MBh	46.6	47.3	48.7	50.8	46.2	46.9	48.3	50.3	45.0	45.7	47.1	49.1	43.0	43.6	45.0	47.1	40.5	41.1	42.5	44.6	38.2	38.8	40.2	42.3						
S/T	1.00	0.87	0.73	0.59	1.00	0.88	0.74	0.59	1.00	0.91	0.77	0.62	1.00	1.00	0.79	0.64	1.00	1.00	0.81	0.66	1.00	1.00	0.86	0.71							
Delta T	2.6	2.4	2.1	1.7	2.6	2.4	2.1	1.7	2.6	2.4	2.1	1.8	2.6	2.4	2.1	1.7	2.6	2.4	2.0	1.7	2.7	2.5	2.2	1.8							
KW	2.80	2.80	2.79	2.82	3.12	3.12	3.11	3.14	3.48	3.48	3.47	3.49	3.86	3.86	3.86	3.88	4.30	4.29	4.29	4.31	4.80	4.80	4.80	4.82							
AMPS	10.3	10.3	10.2	10.3	11.7	11.7	11.7	11.8	13.4	13.4	13.3	13.4	15.1	15.1	15.1	15.2	17.1	17.1	17.1	17.2	19.4	19.4	19.4	19.5							
HI PR	258	259	261	266	299	300	301	306	341	342	344	348	386	387	389	394	435	436	438	443	488	489	490	495							
LO PR	124	126	129	134	132	133	136	142	138	140	143	148	144	145	149	154	149	151	154	159	156	158	161	166							
MBh	47.6	48.2	49.6	51.7	47.1	47.8	49.2	51.2	46.0	46.6	48.0	50.1	43.9	44.5	45.9	48.0	41.4	42.0	43.4	45.5	39.1	39.7	41.1	43.2							
S/T	1.00	0.91	0.77	0.62	1.00	0.92	0.78	0.63	1.00	0.95	0.80	0.66	1.00	1.00	0.82	0.68	1.00	1.00	0.85	0.70	1.00	1.00	0.90	0.75							
Delta T	2.5	2.3	2.0	1.6	2.5	2.3	2.0	1.6	2.5	2.3	2.0	1.6	2.5	2.3	2.0	1.6	2.4	2.3	1.9	1.6	2.6	2.4	2.0	1.7							
KW	2.82	2.81	2.81	2.83	3.14	3.13	3.13	3.15	3.49	3.49	3.49	3.51	3.88	3.88	3.87	3.90	4.31	4.31	4.31	4.33	4.82	4.82	4.81	4.84							
AMPS	10.3	10.3	10.3	10.4	11.8	11.8	11.8	11.9	13.4	13.4	13.4	13.5	15.2	15.2	15.2	15.3	17.2	17.2	17.2	17.3	19.5	19.5	19.5	19.6							
HI PR	261	262	264	268	301	302	304	308	343	344	346	351	389	390	392	396	438	439	441	445	490	491	493	498							
LO PR	127	128	132	137	134	136	139	144	141	142	145	151	146	148	151	156	152	153	156	162	159	160	163	168							

1400	MBh	46.9	47.6	48.9	51.0	46.5	47.2	48.5	50.6	45.3	46.0	47.3	49.4	43.3	43.9	45.3	47.4	40.7	41.4	42.8	44.8	38.4	39.1	40.5	42.6
	S/T	1.00	0.93	0.79	0.64	1.00	0.94	0.80	0.65	1.00	1.00	0.82	0.67	1.00	1.00	0.84	0.69	1.00	1.00	0.86	0.72	1.00	1.00	1.00	0.77
	Delta T	3.0	2.8	2.5	2.2	3.0	2.8	2.5	2.2	3.0	2.9	2.5	2.2	3.0	2.8	2.5	2.1	3.0	2.8	2.5	2.1	3.1	2.9	2.6	2.2
	KW	2.79	2.79	2.78	2.81	3.11	3.11	3.11	3.13	3.47	3.47	3.46	3.49	3.86	3.86	3.85	3.87	4.29	4.29	4.28	4.31	4.80	4.79	4.79	4.81
	AMPS	10.2	10.2	10.2	10.3	11.7	11.7	11.7	11.8	13.3	13.3	13.3	13.4	15.1	15.1	15.1	15.2	17.1	17.1	17.0	17.2	19.4	19.4	19.4	19.5
	HI PR	258	259	261	265	298	299	301	305	340	341	343	348	386	387	389	393	435	436	438	442	487	488	490	494
	LO PR	125	126	129	135	132	134	137	142	139	140	143	149	144	146	149	154	150	151	154	159	156	158	161	166
	MBh	47.4	48.1	49.4	51.5	47.0	47.7	49.0	51.1	45.8	46.5	47.8	49.9	43.8	44.4	45.8	47.9	41.2	41.9	43.3	45.3	38.9	39.6	41.0	43.1
S/T	1.00	0.98	0.84	0.69	1.00	0.98	0.84	0.70	1.00	1.00	0.87	0.72	1.00	1.00	0.89	0.74	1.00	1.00	0.91	0.77	1.00	1.00	1.00	0.82	
Delta T	2.9	2.8	2.4	2.1	2.9	2.7	2.4	2.1	3.0	2.8	2.4	2.1	2.9	2.7	2.4	2.1	2.9	2.7	2.4	2.1	3.0	2.8	2.5	2.2	
KW	2.81	2.80	2.80	2.82	3.13	3.12	3.12	3.14	3.48	3.48	3.48	3.50	3.87	3.87	3.86	3.89	4.30	4.30	4.30	4.32	4.81	4.81	4.80	4.83	
AMPS	10.3	10.3	10.3	10.4	11.8	11.7	11.7	11.8	13.4	13.4	13.4	13.5	15.2	15.2	15.1	15.2	17.1	17.1	17.1	17.2	19.5	19.5	19.4	19.5	
HI PR	259	261	262	267	300	301	303	307	342	343	345	349	387	389	390	395	436	438	439	444	489	490	492	496	
LO PR	126	128	131	136	134	135	138	144	140	142	145	150	146	147	150	156	151	153	156	161	158	159	162	168	
MBh	48.3	49.0	50.3	52.4	47.9	48.6	49.9	52.0	46.7	47.4	48.7	50.8	44.7	45.3	46.7	48.8	42.2	42.8	44.2	46.3	39.9	40.5	41.9	44.0	
S/T	1.00	1.00	0.88	0.73	1.00	1.00	0.88	0.74	1.00	1.00	0.91	0.76	1.00	1.00	0.93	0.78	1.00	1.00	0.95	0.80	1.00	1.00	1.00	0.86	
Delta T	2.8	2.6	2.3	2.0	2.8	2.6	2.3	2.0	2.8	2.7	2.3	2.0	2.8	2.6	2.3	2.0	2.8	2.6	2.3	1.9	2.9	2.7	2.4	2.1	
KW	2.82	2.82	2.82	2.84	3.14	3.14	3.14	3.16	3.50	3.50	3.49	3.52	3.89	3.89	3.88	3.90	4.32	4.32	4.31	4.34	4.83	4.82	4.82	4.84	
AMPS	10.4	10.4	10.3	10.4	11.8	11.8	11.8	11.9	13.5	13.5	13.4	13.5	15.2	15.2	15.2	15.3	17.2	17.2	17.2	17.3	19.5	19.5	19.5	19.6	
HI PR	262	263	265	269	302	303	305	310	345	346	347	352	390	391	393	397	439	440	442	446	491	492	494	499	
LO PR	129	130	133	139	136	138	141	146	143	144	147	153	148	150	153	158	154	155	158	163	160	162	165	170	

IDB: Entering Indoor Dry Bulb Temperature
 High and low pressures are measured at the liquid and suction service valves.
 Shaded area reflects AHRI Rating Conditions.
 kW = Total system power
 Amps = Outdoor unit amps (compressor + fan)

IDB	AIRFLOW	OUTDOOR AMBIENT TEMPERATURE												105°F												115°F											
		65°F				75°F				85°F				95°F				105°F				115°F															
		59	63	67	71	59	63	67	71	59	63	67	71	59	63	67	71	59	63	67	71	59	63	67	71												
80	1400	MBh	46.1	46.8	48.1	50.2	45.7	46.4	47.7	49.8	44.5	45.2	46.5	48.6	42.5	43.1	44.5	46.6	40.0	40.7	42.0	44.1	37.8	38.4	39.7	41.8											
		S/T	0.91	0.84	0.70	0.56	1.00	0.84	0.71	0.57	1.00	0.87	0.73	0.59	1.00	0.89	0.75	0.61	1.00	1.00	0.78	0.63	1.00	1.00	0.83	0.69											
		ΔT	27	25	22	18	27	25	22	18	27	26	22	19	27	25	22	18	27	25	22	18	28	26	23	19											
		kW	2.69	2.69	2.69	2.71	3.01	3.01	3.00	3.02	3.36	3.36	3.35	3.37	3.74	3.74	3.73	3.75	4.16	4.16	4.15	4.18	4.66	4.66	4.65	4.68											
		Amps	9.9	9.9	9.8	9.9	11.3	11.3	11.3	11.4	12.9	12.9	12.9	13.0	14.7	14.6	14.6	14.7	16.6	16.6	16.6	16.6	18.9	18.9	18.8	18.9											
		HI PR	249	250	252	257	288	289	291	295	329	330	332	336	373	374	376	380	420	421	423	427	471	472	474	478											
	LO PR	121	123	126	131	128	130	133	138	135	136	139	144	140	142	145	150	145	147	150	155	152	153	156	162												
	MBh	47.0	47.6	48.9	51.0	46.6	47.2	48.5	50.6	45.4	46.0	47.4	49.4	43.3	44.0	45.3	47.4	40.8	41.5	42.8	44.9	38.6	39.2	40.6	42.6												
	S/T	1.00	0.88	0.74	0.60	1.00	0.88	0.75	0.60	1.00	0.91	0.77	0.63	1.00	0.93	0.79	0.65	1.00	1.00	0.81	0.67	1.00	1.00	0.86	0.72												
	ΔT	26	24	21	17	26	24	21	17	26	25	21	17	26	24	21	17	26	24	21	17	27	25	22	18												
	kW	2.71	2.71	2.70	2.72	3.02	3.02	3.02	3.04	3.37	3.37	3.37	3.39	3.75	3.75	3.75	3.77	4.18	4.18	4.17	4.19	4.68	4.67	4.67	4.69												
	Amps	9.9	9.9	9.9	10.0	11.4	11.4	11.3	11.5	13.0	13.0	13.0	13.1	14.7	14.7	14.7	14.8	16.7	16.7	16.6	16.7	18.9	18.9	18.9	19.0												
HI PR	252	253	255	259	291	292	293	298	331	333	334	339	375	376	378	382	423	424	426	430	473	474	476	480													
LO PR	123	125	128	133	131	132	135	140	137	138	142	147	142	144	147	152	148	149	152	157	154	156	159	164													
MBh	48.0	48.6	50.0	52.0	47.6	48.2	49.6	51.6	46.4	47.0	48.4	50.4	44.4	45.0	46.3	48.4	41.9	42.5	43.9	45.9	39.6	40.2	41.6	43.7													
S/T	1.00	0.88	0.75	0.61	1.00	0.89	0.75	0.61	1.00	0.91	0.78	0.64	1.00	1.00	0.80	0.66	1.00	1.00	0.82	0.68	1.00	1.00	0.87	0.73													
ΔT	25	23	20	16	25	23	20	16	25	24	20	17	25	23	20	16	25	23	20	16	26	24	21	17													
kW	2.72	2.72	2.71	2.74	3.04	3.03	3.03	3.05	3.39	3.39	3.38	3.40	3.77	3.76	3.76	3.78	4.19	4.19	4.18	4.21	4.69	4.69	4.68	4.71													
Amps	10.0	10.0	10.0	10.1	11.4	11.4	11.4	11.5	13.1	13.0	13.0	13.1	14.8	14.8	14.8	14.9	16.7	16.7	16.7	16.8	19.0	19.0	19.0	19.1													
HI PR	254	255	257	261	293	294	296	300	334	335	337	341	378	379	381	385	425	426	428	432	476	477	478	483													
LO PR	126	128	131	136	133	135	138	143	140	141	144	149	145	146	149	155	150	152	155	160	157	158	161	166													
85	1400	MBh	46.9	47.5	48.9	50.9	46.5	47.1	48.5	50.5	45.3	45.9	47.3	49.4	43.3	43.9	45.3	47.3	40.8	41.4	42.8	44.8	38.5	39.2	40.5	42.6											
		S/T	1.00	0.94	0.80	0.66	1.00	0.95	0.81	0.67	1.00	1.00	0.84	0.69	1.00	1.00	0.85	0.71	1.00	1.00	0.88	0.73	1.00	1.00	0.93	0.79											
		ΔT	31	29	26	22	31	29	26	22	31	29	26	22	31	29	26	22	31	29	25	22	32	30	26	23											
		kW	2.70	2.70	2.69	2.72	3.01	3.01	3.01	3.03	3.36	3.36	3.36	3.38	3.74	3.74	3.74	3.76	4.17	4.17	4.16	4.18	4.67	4.66	4.66	4.68											
		Amps	9.9	9.9	9.9	10.0	11.3	11.3	11.3	11.4	12.9	12.9	12.9	13.0	14.7	14.7	14.6	14.8	16.6	16.6	16.6	16.7	18.9	18.9	18.9	19.0											
		HI PR	251	252	253	258	290	291	292	297	330	331	333	337	374	375	377	381	422	423	424	429	472	473	475	479											
	LO PR	123	124	128	133	130	132	135	140	137	138	141	146	142	143	146	151	147	149	152	157	154	155	158	163												
	MBh	47.7	48.4	49.7	51.8	47.3	48.0	49.3	51.4	46.1	46.8	48.1	50.2	44.1	44.7	46.1	48.2	41.6	42.3	43.6	45.7	39.3	40.0	41.3	43.4												
	S/T	1.00	0.98	0.84	0.70	1.00	0.98	0.85	0.71	1.00	1.00	0.87	0.73	1.00	1.00	0.89	0.75	1.00	1.00	0.91	0.77	1.00	1.00	1.00	0.82												
	ΔT	30	28	25	21	30	28	24	21	30	28	25	21	30	28	24	21	30	28	24	21	31	29	25	22												
	kW	2.71	2.71	2.71	2.73	3.03	3.03	3.02	3.05	3.38	3.38	3.37	3.40	3.76	3.76	3.75	3.78	4.18	4.18	4.18	4.20	4.68	4.68	4.67	4.70												
	Amps	10.0	10.0	9.9	10.0	11.4	11.4	11.4	11.5	13.0	13.0	13.0	13.1	14.8	14.7	14.7	14.8	16.7	16.7	16.7	16.8	19.0	19.0	18.9	19.0												
HI PR	253	254	256	260	292	293	295	299	333	334	335	340	377	378	379	384	424	425	427	431	474	475	477	481													
LO PR	125	127	130	135	132	134	137	142	139	140	143	148	144	146	149	154	149	151	154	159	156	157	161	166													
MBh	48.7	49.4	50.7	52.8	48.3	49.0	50.3	52.4	47.2	47.8	49.1	51.2	45.1	45.8	47.1	49.2	42.6	43.3	44.6	46.7	40.4	41.0	42.4	44.4													
S/T	1.00	0.98	0.85	0.71	1.00	1.00	0.85	0.71	1.00	1.00	0.88	0.74	1.00	1.00	0.90	0.76	1.00	1.00	0.92	0.78	1.00	1.00	1.00	0.83													
ΔT	29	27	24	20	29	27	24	20	29	27	24	20	29	27	23	20	29	27	23	20	30	28	24	21													
kW	2.73	2.73	2.72	2.74	3.04	3.04	3.03	3.06	3.39	3.39	3.39	3.41	3.77	3.77	3.77	3.79	4.20	4.19	4.19	4.21	4.70	4.69	4.69	4.71													
Amps	10.0	10.0	10.0	10.1	11.5	11.5	11.4	11.5	13.1	13.1	13.0	13.2	14.8	14.8	14.8	14.9	16.8	16.7	16.7	16.8	19.0	19.0	19.0	19.1													
HI PR	255	256	258	262	294	295	297	301	335	336	338	342	379	380	382	386	426	427	429	433	477	478	480	484													
LO PR	128	129	132	137	135	137	140	145	141	143	146	151	147	148	151	156	152	153	157	162	159	160	163	168													

IDB: Entering Indoor Dry Bulb Temperature
 High and low pressures are measured at the liquid and suction service valves.
 Shaded area reflects AHRI Rating Conditions.
 kW = Total system power
 Amps = Outdoor unit amps (compressor + fan)

IDB	AIRFLOW	OUTDOOR AMBIENT TEMPERATURE																													
		65°F					75°F					85°F					95°F					105°F					115°F				
		59	63	67	71	75	59	63	67	71	75	59	63	67	71	75	59	63	67	71	75	59	63	67	71	75	59	63	67	71	75
70	1790	MBh	58.2	59.0	60.8	-	57.7	58.5	60.3	-	56.2	57.0	58.8	-	53.6	54.5	56.2	-	50.5	51.3	53.0	-	47.6	48.4	50.1	-					
		S/T	0.67	0.59	0.46	-	0.67	0.60	0.46	-	0.70	0.62	0.49	-	0.72	0.64	0.51	-	0.74	0.67	0.53	-	1.00	0.72	0.58	-					
		ΔT	19	17	14	-	19	17	14	-	19	17	14	-	19	17	14	-	19	17	13	-	20	18	14	-					
		kW	3.35	3.35	3.34	-	3.78	3.78	3.77	-	4.25	4.25	4.24	-	4.76	4.76	4.75	-	5.34	5.33	5.33	-	6.01	6.00	6.00	-					
		Amps	13.2	13.2	13.1	-	15.1	15.1	15.1	-	17.3	17.3	17.2	-	19.6	19.6	19.6	-	22.2	22.2	22.2	-	25.3	25.3	25.3	-					
	2000	HI/PR	258	259	261	-	298	299	301	-	340	341	343	-	386	387	389	-	435	436	438	-	487	488	490	-					
		LO/PR	116	118	121	-	123	125	128	-	130	131	134	-	135	136	139	-	140	141	144	-	146	148	150	-					
		MBh	59.1	59.9	61.6	-	58.6	59.4	61.1	-	57.1	57.9	59.6	-	54.5	55.3	57.0	-	51.3	52.1	53.9	-	48.4	49.3	51.0	-					
		S/T	0.70	0.62	0.49	-	0.71	0.63	0.49	-	0.73	0.66	0.52	-	0.75	0.68	0.54	-	0.77	0.70	0.56	-	1.00	0.75	0.61	-					
		ΔT	18	16	13	-	18	16	13	-	18	16	13	-	18	16	13	-	18	16	12	-	19	17	14	-					
2250	kW	3.37	3.37	3.36	-	3.80	3.79	3.79	-	4.27	4.27	4.26	-	4.78	4.78	4.77	-	5.35	5.35	5.34	-	6.03	6.02	6.01	-						
	Amps	13.2	13.2	13.2	-	15.2	15.2	15.1	-	17.4	17.3	17.3	-	19.7	19.7	19.6	-	22.3	22.3	22.3	-	25.4	25.4	25.3	-						
	HI/PR	260	261	263	-	300	301	303	-	342	343	345	-	388	389	391	-	437	438	440	-	489	490	492	-						
	LO/PR	118	120	123	-	125	127	130	-	131	133	136	-	136	138	141	-	142	143	146	-	148	149	152	-						
	MBh	60.3	61.1	62.8	-	59.8	60.6	62.3	-	58.3	59.1	60.8	-	55.7	56.5	58.2	-	52.5	53.4	55.1	-	49.7	50.5	52.2	-						

IDB	AIRFLOW	OUTDOOR AMBIENT TEMPERATURE																													
		65°F					75°F					85°F					95°F					105°F					115°F				
		59	63	67	71	75	59	63	67	71	75	59	63	67	71	75	59	63	67	71	75	59	63	67	71	75	59	63	67	71	75
75	1790	MBh	58.3	59.1	60.8	63.4	57.8	58.6	60.3	62.9	56.3	57.1	58.8	61.4	53.7	54.5	56.2	58.8	50.5	51.3	53.0	55.7	47.6	48.4	50.2	52.8					
		S/T	0.80	0.72	0.59	0.44	0.80	0.73	0.59	0.45	0.83	0.75	0.62	0.47	1.00	0.77	0.64	0.49	1.00	0.79	0.66	0.52	1.00	0.85	0.71	0.57					
		ΔT	23	21	18	14	23	21	18	14	23	21	18	14	23	21	17	13	22	21	17	14	24	22	19	15					
		kW	3.35	3.35	3.34	3.37	3.78	3.77	3.77	3.80	4.25	4.25	4.24	4.27	4.76	4.76	4.76	4.75	4.78	5.33	5.33	5.32	5.36	6.01	6.00	5.99	6.03				
		Amps	13.2	13.1	13.1	13.3	15.1	15.1	15.0	15.2	17.3	17.2	17.2	17.4	19.6	19.6	19.6	19.7	19.7	22.2	22.2	22.2	22.3	25.3	25.3	25.2	25.4				
	2000	HI/PR	258	259	261	265	298	299	301	306	340	341	343	348	386	387	389	393	435	436	438	442	487	488	490	495					
		LO/PR	116	118	121	126	123	125	128	133	130	131	134	139	135	136	139	144	140	141	144	149	146	148	150	155					
		MBh	59.1	59.9	61.6	64.3	58.6	59.4	61.1	63.8	57.1	57.9	59.6	62.3	54.5	55.3	57.0	59.7	51.4	52.2	53.9	56.5	48.5	49.3	51.0	53.6					
		S/T	0.83	0.75	0.62	0.47	0.84	0.76	0.62	0.48	0.86	0.79	0.65	0.51	1.00	0.81	0.67	0.53	1.00	0.83	0.69	0.55	1.00	0.88	0.74	0.60					
		ΔT	22	20	17	13	22	20	17	13	22	20	17	13	22	20	17	13	22	20	16	13	23	21	18	14					
2250	kW	3.37	3.37	3.36	3.39	3.79	3.79	3.78	3.82	4.27	4.26	4.26	4.29	4.78	4.78	4.77	4.80	5.35	5.35	5.34	5.37	6.02	6.02	6.01	6.04						
	Amps	13.2	13.2	13.2	13.3	15.2	15.2	15.1	15.3	17.3	17.3	17.3	17.4	19.7	19.7	19.7	19.8	22.3	22.3	22.3	22.4	25.4	25.4	25.3	25.5						
	HI/PR	260	261	263	267	300	301	303	307	342	343	345	350	388	389	391	395	437	438	440	444	489	490	492	497						
	LO/PR	118	120	123	127	125	127	130	134	131	133	136	141	136	138	141	146	142	143	146	151	148	149	152	157						
	MBh	60.3	61.1	62.9	65.5	59.8	60.6	62.3	65.0	58.3	59.1	60.8	63.5	55.7	56.5	58.3	60.9	52.6	53.4	55.1	57.7	49.7	50.5	52.2	54.9						

IDB: Entering Indoor Dry Bulb Temperature
 High and low pressures are measured at the liquid and suction service valves.
 Shaded area reflects ACCA (TVA) Rating Conditions.
 Amps = Outdoor unit amps (compressor + fan)
 kW = Total system power

GSZ140181K* / ARUF25B14A*+TXV

	OUTDOOR AMBIENT TEMPERATURE																
	65	60	55	50	47	45	40	35	30	25	20	17	15	10	5	0	-5
MBh	23.71	22.11	20.54	18.99	18.00	17.25	15.37	13.65	12.25	11.21	10.42	10.00	9.47	8.13	6.80	5.47	4.13
T/R	21.11	19.88	18.64	17.41	16.67	15.97	14.23	12.64	11.34	10.38	9.65	9.26	8.77	7.53	6.30	5.06	3.83
kW	1.51	1.48	1.45	1.42	1.40	1.39	1.36	1.33	1.30	1.27	1.24	1.22	1.21	1.18	1.15	1.12	1.09
Amps	7.2	6.6	6.1	5.7	5.5	5.3	5.0	4.7	4.4	4.2	4.0	3.8	3.8	3.5	3.3	3.0	2.7
COP	4.60	4.37	4.15	3.92	3.76	3.63	3.31	3.01	2.76	2.59	2.46	2.40	2.29	2.02	1.74	1.43	1.11

GSZ140241K* / ARUF25B14A*+TXV

	OUTDOOR AMBIENT TEMPERATURE																
	65	60	55	50	47	45	40	35	30	25	20	17	15	10	5	0	-5
MBh	30.74	28.63	26.55	24.50	23.20	22.20	19.70	17.43	15.59	14.20	13.16	12.60	11.89	10.13	8.36	6.59	4.83
T/R	27.37	25.74	24.10	22.46	21.48	20.55	18.24	16.14	14.43	13.15	12.18	11.67	11.01	9.38	7.74	6.10	4.47
kW	1.97	1.93	1.88	1.84	1.81	1.79	1.75	1.70	1.66	1.61	1.57	1.54	1.52	1.48	1.43	1.39	1.34
Amps	9.1	8.4	7.8	7.2	6.9	6.7	6.3	5.9	5.6	5.3	5.0	4.8	4.7	4.4	4.1	3.7	3.3
COP	4.57	4.36	4.14	3.91	3.76	3.63	3.31	3.00	2.76	2.58	2.46	2.40	2.29	2.01	1.71	1.39	1.05

GSZ140301K* / ARUF29B14 + TXV**

	OUTDOOR AMBIENT TEMPERATURE																
	65	60	55	50	47	45	40	35	30	25	20	17	15	10	5	0	-5
MBh	37.15	34.70	32.29	29.92	28.40	27.27	24.40	21.77	19.62	18.03	16.84	16.20	15.39	13.35	11.32	9.29	7.25
T/R	33.08	31.19	29.31	27.43	26.30	25.25	22.59	20.16	18.17	16.69	15.59	15.00	14.25	12.36	10.48	8.60	6.71
kW	2.48	2.42	2.37	2.31	2.27	2.25	2.19	2.14	2.08	2.02	1.96	1.93	1.90	1.85	1.79	1.73	1.67
Amps	11.9	10.9	10.1	9.4	9.0	8.8	8.3	7.8	7.4	7.0	6.6	6.4	6.2	5.8	5.4	5.0	4.5
COP	4.39	4.19	4.00	3.80	3.66	3.55	3.26	2.99	2.77	2.62	2.51	2.46	2.37	2.12	1.85	1.57	1.27

GSZ140361K* / ARUF37C14 + TXV**

	OUTDOOR AMBIENT TEMPERATURE																
	65	60	55	50	47	45	40	35	30	25	20	17	15	10	5	0	-5
MBh	42.72	39.94	37.21	34.52	32.80	31.52	28.28	25.30	22.87	21.06	19.72	19.00	18.08	15.78	13.48	11.18	8.88
T/R	38.04	35.91	33.78	31.65	30.37	29.19	26.19	23.43	21.17	19.50	18.26	17.59	16.74	14.61	12.48	10.35	8.22
kW	2.81	2.76	2.71	2.66	2.63	2.61	2.56	2.50	2.45	2.40	2.35	2.32	2.30	2.25	2.20	2.15	2.10
Amps	13.6	12.5	11.6	10.8	10.3	10.0	9.4	8.9	8.4	7.9	7.5	7.3	7.1	6.6	6.2	5.7	5.1
COP	4.46	4.24	4.03	3.81	3.66	3.55	3.24	2.96	2.73	2.57	2.46	2.40	2.30	2.06	1.80	1.53	1.24

GSZ140421K* /ARUF43C14 + TXV**

	OUTDOOR AMBIENT TEMPERATURE																
	65	60	55	50	47	45	40	35	30	25	20	17	15	10	5	0	-5
MBh	51.58	48.34	45.15	42.02	40.00	38.54	34.80	31.31	28.47	26.37	24.83	24.00	22.93	20.27	17.60	14.93	12.27
T/R	45.93	43.46	40.99	38.52	37.04	35.69	32.22	28.99	26.36	24.42	22.99	22.22	21.23	18.76	16.30	13.83	11.36
kW	3.41	3.34	3.27	3.21	3.17	3.14	3.08	3.01	2.94	2.88	2.81	2.77	2.74	2.68	2.61	2.54	2.48
Amps	16.4	15.1	14.0	13.0	12.4	12.1	11.4	10.7	10.1	9.5	9.0	8.7	8.5	8.0	7.4	6.8	6.1
COP	4.44	4.24	4.04	3.84	3.70	3.60	3.32	3.05	2.84	2.69	2.59	2.54	2.45	2.22	1.98	1.72	1.45

Calculations are based on nominal CFM and 70°F indoor dry bulb.

Amps = Outdoor unit amps (comp.+fan)

Note: Shaded area is AHRI Rating Conditions at 47°F outdoor ambient temperature.

kW = Total system power

GSZ140421K* - ARUF43D14A*+TXV

	OUTDOOR AMBIENT TEMPERATURE																
	65	60	55	50	47	45	40	35	30	25	20	17	15	10	5	0	-5
MBh	51.58	48.34	45.15	42.02	40.00	38.54	34.80	31.31	28.47	26.37	24.83	24.00	22.93	20.27	17.60	14.93	12.27
T/R	45.93	43.46	40.99	38.52	37.04	35.69	32.22	28.99	26.36	24.42	22.99	22.22	21.23	18.76	16.30	13.83	11.36
kW	3.41	3.34	3.27	3.21	3.17	3.14	3.08	3.01	2.94	2.88	2.81	2.77	2.74	2.68	2.61	2.54	2.48
Amps	16.5	15.2	14.0	13.0	12.5	12.2	11.4	10.7	10.2	9.6	9.1	8.8	8.6	8.0	7.5	6.8	6.1
COP	4.44	4.24	4.04	3.84	3.70	3.60	3.32	3.05	2.84	2.69	2.59	2.54	2.45	2.22	1.98	1.72	1.45

GSZ140481K* - ARUF61D14A*+TXV

	OUTDOOR AMBIENT TEMPERATURE																
	65	60	55	50	47	45	40	35	30	25	20	17	15	10	5	0	-5
MBh	56.58	53.20	49.88	46.61	44.50	42.97	39.18	35.56	32.58	30.41	28.84	28.00	26.90	24.15	21.40	18.65	15.90
T/R	50.37	47.83	45.28	42.73	41.21	39.84	36.28	32.92	30.17	28.16	26.71	25.93	24.91	22.36	19.81	17.27	14.72
kW	3.51	3.48	3.44	3.40	3.38	3.36	3.33	3.29	3.25	3.22	3.18	3.16	3.14	3.10	3.07	3.03	2.99
Amps	17.2	15.8	14.6	13.6	13.0	12.6	11.8	11.1	10.5	9.9	9.4	9.0	8.8	8.2	7.6	7.0	6.2
COP	4.72	4.49	4.25	4.02	3.86	3.74	3.45	3.17	2.94	2.77	2.66	2.60	2.51	2.28	2.04	1.80	1.56

GSZ140491K* - ARUF49C14A*+TXV

	OUTDOOR AMBIENT TEMPERATURE																
	65	60	55	50	47	45	40	35	30	25	20	17	15	10	5	0	-5
MBh	59.32	55.59	51.92	48.32	46.00	44.32	40.01	36.01	32.74	30.32	28.55	27.60	26.37	23.31	20.24	17.17	14.11
T/R	52.82	49.98	47.14	44.30	42.59	41.04	37.05	33.34	30.31	28.08	26.44	25.56	24.42	21.58	18.74	15.90	13.06
kW	3.96	3.87	3.79	3.70	3.64	3.61	3.52	3.43	3.34	3.25	3.16	3.11	3.08	2.99	2.90	2.81	2.72
Amps	19.1	17.5	16.2	15.1	14.5	14.1	13.2	12.4	11.7	11.1	10.5	10.1	9.9	9.3	8.6	7.9	7.1
COP	4.39	4.21	4.02	3.83	3.70	3.60	3.33	3.08	2.87	2.73	2.64	2.60	2.51	2.29	2.05	1.79	1.52

GSZ140601K* - ASPT61D14A*

	OUTDOOR AMBIENT TEMPERATURE																
	65	60	55	50	47	45	40	35	30	25	20	17	15	10	5	0	-5
MBh	75.71	71.04	66.44	61.91	59.00	56.89	51.54	46.52	42.41	39.39	37.18	36.00	34.47	30.63	26.80	22.97	19.13
T/R	67.41	63.86	60.31	56.76	54.63	52.70	47.72	43.07	39.27	36.47	34.43	33.33	31.91	28.36	24.81	21.26	17.71
kW	4.91	4.79	4.67	4.55	4.48	4.43	4.31	4.20	4.08	3.96	3.84	3.77	3.72	3.60	3.48	3.36	3.25
Amps	23.4	21.5	19.8	18.4	17.6	17.2	16.1	15.1	14.3	13.5	12.8	12.3	12.0	11.2	10.4	9.5	8.5
COP	4.52	4.35	4.17	3.99	3.86	3.76	3.50	3.25	3.05	2.92	2.84	2.80	2.71	2.49	2.25	2.00	1.73

Calculations are based on nominal CFM and 70°F indoor dry bulb.

Note: Shaded area is AHRI Rating Conditions at 47°F outdoor ambient temperature.

Amps = Outdoor unit amps (comp.+fan)

kW = Total system power

MODEL: DZ14SA0181K* + ARUF25B14** + TXV				
Conditions: 80 °F IBD, 67 °F IWB @ 610 CFM				
OUTDOOR TEM. ° F.	TOTAL BTU/H	SENSIBLE BTU/H	LATENT BTU/H	TOTAL WATTS
75	18,900	13,986	4,914	1,180
80	18,650	14,077	4,573	1,245
85	18,400	14,168	4,232	1,310
90	18,000	14,036	3,964	1,380
95	17,600	13,904	3,696	1,450
100	17,100	13,675	3,425	1,530
105	16,600	13,446	3,154	1,610
110	16,150	13,474	2,676	1,705
115	15,700	13,502	2,198	1,800
TVA Conditions @ 95° OD DB, 75° ID DB 63° ID WB				
95°	17,000	13,600	3,400	1,450

MODEL: DZ14SA0241K* + ARUF25B14** + TXV				
Conditions: 80 °F IBD, 67 °F IWB @ 870 CFM				
OUTDOOR TEM. ° F.	TOTAL BTU/H	SENSIBLE BTU/H	LATENT BTU/H	TOTAL WATTS
75	25,100	19,076	6,024	1,580
80	25,400	19,093	6,307	1,675
85	24,500	19,110	5,390	1,770
90	24,550	18,915	5,635	1,870
95	23,400	18,720	4,680	1,970
100	23,350	18,532	4,819	2,080
105	22,100	18,343	3,757	2,190
110	22,050	18,368	3,683	2,385
115	20,900	18,392	2,508	2,450
TVA Conditions @ 95° OD DB, 75° ID DB 63° ID WB				
95°	22,600	18,532	4,068	1,970

MODEL: DZ14SA0301K* + ARUF29B14** + TXV				
Conditions: 80 °F IBD, 67 °F IWB @ 870 CFM				
OUTDOOR TEM. ° F.	TOTAL BTU/H	SENSIBLE BTU/H	LATENT BTU/H	TOTAL WATTS
75	29,600	20,720	8,880	1,880
80	29,250	20,764	8,486	1,995
85	28,900	20,808	8,092	2,110
90	28,250	20,616	7,634	2,230
95	27,600	20,424	7,176	2,350
100	26,850	20,130	6,720	2,490
105	26,100	19,836	6,264	2,630
110	25,400	19,922	5,479	2,790
115	24,700	20,007	4,693	2,950
TVA Conditions @ 95° OD DB, 75° ID DB 63° ID WB				
95°	26,600	19,950	6,650	2,360

MODEL: DZ14SA0361K* + ARUF37C14** + TXV				
Conditions: 80 °F IBD, 67 °F IWB @ 1070 CFM				
OUTDOOR TEM. ° F.	TOTAL BTU/H	SENSIBLE BTU/H	LATENT BTU/H	TOTAL WATTS
75	37,700	26,390	11,310	2,430
80	37,250	26,443	10,807	2,575
85	36,800	26,496	10,304	2,720
90	36,000	26,272	9,728	2,880
95	35,200	26,048	9,152	3,040
100	34,200	25,640	8,560	3,220
105	33,200	25,232	7,968	3,400
110	32,300	25,333	6,967	3,610
115	31,400	25,434	5,966	3,820
TVA Conditions @ 95° OD DB, 75° ID DB 63° ID WB				
95°	33,900	25,425	8,475	3,050

MODEL: DZ14SA0421K* + ARUF43C14** + TXV				
Conditions: 80 °F IBD, 67 °F IWB @ 1300 CFM				
OUTDOOR TEM. ° F.	TOTAL BTU/H	SENSIBLE BTU/H	LATENT BTU/H	TOTAL WATTS
75	41,800	29,678	12,122	2,720
80	41,300	29,935	11,365	2,870
85	40,800	30,192	10,608	3,020
90	39,900	29,916	9,984	3,190
95	39,000	29,640	9,360	3,360
100	37,900	29,172	8,728	3,545
105	36,800	28,704	8,096	3,730
110	35,800	28,794	7,006	3,950
115	34,800	28,884	5,916	4,170
TVA Conditions @ 95° OD DB, 75° ID DB 63° ID WB				
95°	37,600	28,952	8,648	3,360

MODEL: DZ14SA0481K + ARUF61D14** + TXV				
Conditions: 80 °F IBD, 67 °F IWB @ 1560 CFM				
OUTDOOR TEM. ° F.	TOTAL BTU/H	SENSIBLE BTU/H	LATENT BTU/H	TOTAL WATTS
75	48,300	35,742	12,558	3,110
80	47,700	36,005	11,696	3,290
85	47,100	36,267	10,833	3,470
90	46,550	35,909	10,642	3,665
95	45,000	35,550	9,450	3,860
100	43,750	34,988	8,763	4,075
105	42,500	34,425	8,075	4,290
110	41,350	34,499	6,852	4,545
115	40,200	34,572	5,628	4,800
TVA Conditions @ 95° OD DB, 75° ID DB 63° ID WB				
95°	43,400	34,720	8,680	3,860

MODEL: DZ14SA0491K* + ARUF49C14** + TXV				
Conditions: 80 °F IBD, 67 °F IWB @ 1400 CFM				
OUTDOOR TEM. ° F.	TOTAL BTU/H	SENSIBLE BTU/H	LATENT BTU/H	TOTAL WATTS
75	47,700	33,867	13,833	3,000
80	47,100	33,906	13,194	3,175
85	46,500	33,945	12,555	3,350
90	45,500	33,660	11,840	3,540
95	44,500	33,375	11,125	3,730
100	43,250	33,068	10,183	3,940
105	42,000	32,760	9,240	4,150
110	40,850	32,856	7,995	4,400
115	39,700	32,951	6,749	4,650
TVA Conditions @ 95° OD DB, 75° ID DB 63° ID WB				
95°	42,900	32,604	10,296	3,730

MODEL: DZ14SA0601K* + ASPT61D14** + TXV				
Conditions: 80 °F IBD, 67 °F IWB @ 1790 CFM				
OUTDOOR TEM. ° F.	TOTAL BTU/H	SENSIBLE BTU/H	LATENT BTU/H	TOTAL WATTS
75	60,600	42,420	18,180	3,770
80	59,850	42,782	17,069	4,010
85	59,100	43,143	15,957	4,250
90	57,800	42,759	15,041	4,505
95	56,500	42,375	14,125	4,760
100	54,900	41,708	13,192	5,045
105	53,300	41,041	12,259	5,330
110	51,900	41,226	10,675	5,670
115	50,500	41,410	9,090	6,010
TVA Conditions @ 95° OD DB, 75° ID DB 63° ID WB				
95°	54,500	41,420	13,080	4,770

OUTDOOR UNIT	Indoor Units		COOLING RATINGS [^]				TVA RATINGS ³		HEATING RATINGS [^]			CFM	AHRI #	
	Coils/Air Handlers	Furnaces	TOTAL	SENS.	SEER ¹	EER ²	TOTAL	SENS.	Hi ⁴	HSPF ⁵	Low ⁶			
DZ14SN 0181A*	ARUF25B14A*		17,600	13,900	14	11.5	17,000	13,600	18,000	8.2	10,000	610	7998699	
	ARUF25B14A*+TXV		17,400	13,700	14	11.5	16,800	13,400	18,000	8.2	10,000	610	7998700	
	ASPT25B14A*		18,000	14,200	15	12	17,400	13,900	17,200	8.2	10,000	580	8245401	
	ASPT29B14A*		18,000	14,200	15	12.5	17,400	13,900	17,200	8.5	10,000	565	8245402	
	AWUF31XX16A*		17,200	13,600	14.5	12	16,600	13,300	17,200	8.2	10,000	620	7998702	
	AWUF31XX16A*+TXV		17,200	13,600	15	12.5	16,600	13,300	17,200	8.2	10,000	620	7998703	
	CA*F3137*6A*+EEP+TXV		17,600	13,900	14	11.5	17,000	13,600	18,000	8.2	10,000	610	7998704	
	CA*F3636*6D*+MBVC1200**_1A*+TXV		17,600	13,900	15	12.5	17,000	13,600	17,600	8.2	10,000	600	7998705	
	CA*F3636*6D*+TXV	D*80VC0603B*A*		17,800	14,400	15.0	12.5	17,200	14,000	17,800	8.2	10,000	550	9949469
	CA*F3636*6D*+TXV	D*80VC0803B*A*		17,800	14,400	15.0	12.5	17,200	14,000	17,800	8.2	10,000	600	9949472
	CA*F3636*6D*+TXV	D*80HE0603B*A*		17,800	14,100	15	12.5	17,200	13,800	17,800	8.2	10,000	650	7998706
	CA*F3636*6D*+TXV	D*96VE0302BNA*		17,200	13,600	15	12.5	16,600	13,300	17,400	8.2	10,000	540	7998707
	CA*F3636*6D*+TXV	D*96VE0402BNA*		17,200	13,600	15	12.5	16,600	13,300	17,400	8.2	10,000	540	7998708
	CA*F3636*6D*+TXV	D*96VE0603BNA*		17,200	13,600	15	12.5	16,600	13,300	17,400	8.2	10,000	550	7998709
	CA*F3636*6D*+TXV	D*96VE0803BNA*		17,200	13,600	15	12.5	16,600	13,300	17,400	8.2	10,000	540	7998710
	CA*F3636*6D*+TXV	D*80VC0604B*A*		17,600	13,900	14.5	12	17,000	13,600	17,600	8.2	10,000	620	7998711
	CA*F3636*6D*+TXV	D*96VC0403BNA*		17,600	13,900	14.5	12	17,000	13,600	17,600	8.2	10,000	610	7998712
	CA*F3636*6D*+TXV	D*96VC0603BNA*		17,600	13,900	14.5	12	17,000	13,600	17,600	8.2	10,000	610	7998713
	CA*F3636*6D*+TXV	D*96VC0803BNA*		17,600	13,900	14.5	12	17,000	13,600	17,600	8.2	10,000	615	7998714
	CHPF3636B6C*+MBVC1200**_1A*+TXV			17,600	13,900	15	12.5	17,000	13,600	17,600	8.2	10,000	600	7998715
	CHPF3636B6C*+TXV	D*80VC0603B*A*		17,800	14,400	15.0	12.5	17,200	14,000	17,800	8.2	10,000	550	9949470
	CHPF3636B6C*+TXV	D*80VC0803B*A*		17,800	14,400	15.0	12.5	17,200	14,000	17,800	8.2	10,000	600	9949473
	CHPF3636B6C*+TXV	D*80HE0603B*A*		17,800	14,100	15	12.5	17,200	13,800	17,800	8.2	10,000	650	7998716
	CHPF3636B6C*+TXV	D*96VE0302BNA*		17,200	13,600	15	12.5	16,600	13,300	17,400	8.2	10,000	540	7998717
	CHPF3636B6C*+TXV	D*96VE0402BNA*		17,200	13,600	15	12.5	16,600	13,300	17,400	8.2	10,000	540	7998718
	CHPF3636B6C*+TXV	D*96VE0603BNA*		17,200	13,600	15	12.5	16,600	13,300	17,400	8.2	10,000	550	7998719
	CHPF3636B6C*+TXV	D*96VE0803BNA*		17,200	13,600	15	12.5	16,600	13,300	17,400	8.2	10,000	540	7998720
	CHPF3636B6C*+TXV	D*80VC0604B*A*		17,600	13,900	14.5	12	17,000	13,600	17,600	8.2	10,000	620	7998721
	CHPF3636B6C*+TXV	D*96VC0403BNA*		17,600	13,900	14.5	12	17,000	13,600	17,600	8.2	10,000	610	7998722
	CHPF3636B6C*+TXV	D*96VC0603BNA*		17,600	13,900	14.5	12	17,000	13,600	17,600	8.2	10,000	610	7998723
	CHPF3636B6C*+TXV	D*96VC0803BNA*		17,600	13,900	14.5	12	17,000	13,600	17,600	8.2	10,000	615	7998724
	CSCF3036N6D*+EEP+TXV			17,600	13,900	14	11.5	17,000	13,600	17,600	8.2	10,000	610	7998725
	CSCF3036N6D*+MBVC1200**_1A*+TXV			17,600	13,900	15	12.5	17,000	13,600	17,600	8.2	10,000	600	7998726
	CSCF3036N6D*+TXV	D*80VC0603B*A*		17,800	14,400	15.0	12.5	17,200	14,000	17,800	8.2	10,000	550	9949471
	CSCF3036N6D*+TXV	D*80VC0803B*A*		17,800	14,400	15.0	12.5	17,200	14,000	17,800	8.2	10,000	600	9949474
	CSCF3036N6D*+TXV	D*80HE0603B*A*		17,800	14,100	15	12.5	17,200	13,800	17,800	8.2	10,000	650	7998727
	CSCF3036N6D*+TXV	D*96VE0302BNA*		17,200	13,600	15	12.5	16,600	13,300	17,400	8.2	10,000	540	7998728
	CSCF3036N6D*+TXV	D*96VE0402BNA*		17,200	13,600	15	12.5	16,600	13,300	17,400	8.2	10,000	540	7998729
	CSCF3036N6D*+TXV	D*96VE0603BNA*		17,200	13,600	15	12.5	16,600	13,300	17,400	8.2	10,000	550	7998730
	CSCF3036N6D*+TXV	D*96VE0803BNA*		17,200	13,600	15	12.5	16,600	13,300	17,400	8.2	10,000	540	7998731
	CSCF3036N6D*+TXV	D*80VC0604B*A*		17,600	13,900	14.5	12	17,000	13,600	17,600	8.2	10,000	620	7998732
	CSCF3036N6D*+TXV	D*96VC0403BNA*		17,600	13,900	14.5	12	17,000	13,600	17,600	8.2	10,000	610	7998733
	CSCF3036N6D*+TXV	D*96VC0603BNA*		17,600	13,900	14.5	12	17,000	13,600	17,600	8.2	10,000	610	7998734
	CSCF3036N6D*+TXV	D*96VC0803BNA*		17,600	13,900	14.5	12	17,000	13,600	17,600	8.2	10,000	615	7998735
	DV24PTCB14A*			17,200	13,600	14.5	12	16,600	13,300	17,200	8.2	10,000	600	7998701
DV25PTCB14A*			17,200	13,600	15	12	16,600	13,300	17,200	8.3	9,600	640	8996278	
DV29PTCB14A*			17,200	13,600	15	12.5	16,600	13,300	17,200	8.5	9,600	585	8996279	

See Notes on Page 35.

OUTDOOR UNIT	Indoor Units		COOLING RATINGS [^]				TVA RATINGS ³		HEATING RATINGS [^]			CFM	AHRI #
	Coils/Air Handlers	Furnaces	TOTAL	SENS.	SEER ¹	EER ²	TOTAL	SENS.	Hi ⁴	HSPF ⁵	Low ⁶		
DZ14SN 0241A*	ARUF25B14A*		23,200	18,600	14	11.5	22,400	18,400	23,200	8.2	13,000	870	7998736
	ARUF25B14A*+TXV		23,200	18,600	14	11.5	22,400	18,400	23,200	8.2	12,600	870	7998737
	ASPT25B14A*		23,200	18,600	14.5	12	22,400	18,400	23,200	8.2	13,400	800	8245403
	ASPT29B14A*		23,400	18,700	15	12.5	22,600	18,500	23,200	8.5	13,400	790	8245404
	AWUF31XX16A*		22,800	18,200	14.5	12	22,000	18,100	23,200	8.2	13,000	845	7998739
	AWUF31XX16A*+TXV		22,800	18,200	15	12.5	22,000	18,100	23,200	8.2	13,000	845	7998740
	CA*F3137*6A*+EEP+TXV		23,600	18,900	14	11.5	22,800	18,700	23,200	8.2	13,000	870	7998741
	CA*F3636*6D*	D*80VC0603B*A*	23,200	19,200	14.5	12.0	22,400	18,700	22,800	8.2	13,000	750	9949475
	CA*F3636*6D*	D*80VC0803B*A*	23,200	19,200	14.5	12.0	22,400	18,700	22,800	8.2	13,000	750	9949479
	CA*F3636*6D*	D*80VC0804C*A*	23,000	19,000	14.5	12.0	22,200	18,600	22,800	8.2	13,000	800	9949483
	CA*F3636*6D*	D*80HE0603B*A*	23,200	18,600	14.5	12	22,400	18,400	23,000	8.2	13,000	860	7998753
	CA*F3636*6D*	D*96VE0302BNA*	23,000	18,400	14.5	12	22,200	18,200	22,800	8.2	13,000	800	7998754
	CA*F3636*6D*	D*96VE0402BNA*	23,000	18,400	14.5	12	22,200	18,200	22,800	8.2	13,000	820	7998755
	CA*F3636*6D*	D*96VE0603BNA*	23,000	18,400	14.5	12	22,200	18,200	22,800	8.2	13,000	840	7998756
	CA*F3636*6D*	D*96VE0803BNA*	23,000	18,400	14.5	12	22,200	18,200	22,800	8.2	13,000	770	7998757
	CA*F3636*6D*	D*80VC0604B*A*	23,000	18,400	14.5	12	22,200	18,200	22,800	8.2	13,000	850	7998758
	CA*F3636*6D*	D*96VC0403BNA*	23,000	18,400	14.5	12	22,200	18,200	23,200	8.2	13,000	800	7998759
	CA*F3636*6D*	D*96VC0603BNA*	23,000	18,400	14.5	12	22,200	18,200	23,200	8.2	13,000	810	7998760
	CA*F3636*6D*	D*96VC0803BNA*	23,000	18,400	14.5	12	22,200	18,200	23,200	8.2	13,000	810	7998761
	CA*F3636*6D*+MBVC1200**-1A*		23,600	18,900	14.5	12	22,800	18,700	23,200	8.5	13,000	855	7998742
	CA*F3636*6D*+MBVC1200**-1A*+TXV		23,600	18,900	15	12.5	22,800	18,700	23,200	8.5	13,000	855	7998743
	CA*F3636*6D*+TXV	D*80VC0603B*A*	23,200	19,200	14.5	12.0	22,400	18,700	22,800	8.2	13,000	750	9949476
	CA*F3636*6D*+TXV	D*80VC0803B*A*	23,200	19,200	14.5	12.0	22,400	18,700	22,800	8.2	13,000	750	9949480
	CA*F3636*6D*+TXV	D*80VC0804C*A*	23,000	19,000	15.0	12.5	22,200	18,600	22,800	8.2	13,000	800	9949484
	CA*F3636*6D*+TXV	D*80HE0603B*A*	23,200	18,600	14.5	12	22,400	18,400	23,000	8.2	13,000	860	7998744
	CA*F3636*6D*+TXV	D*96VE0302BNA*	23,000	18,400	15	12.5	22,200	18,200	22,800	8.2	13,000	800	7998745
	CA*F3636*6D*+TXV	D*96VE0402BNA*	23,000	18,400	15	12.5	22,200	18,200	22,800	8.2	13,000	820	7998746
	CA*F3636*6D*+TXV	D*96VE0603BNA*	23,000	18,400	15	12.5	22,200	18,200	22,800	8.2	13,000	840	7998747
	CA*F3636*6D*+TXV	D*96VE0803BNA*	23,000	18,400	15	12.5	22,200	18,200	22,800	8.2	13,000	770	7998748
	CA*F3636*6D*+TXV	D*80VC0604B*A*	23,000	18,400	15	12.5	22,200	18,200	22,800	8.2	13,000	850	7998749
	CA*F3636*6D*+TXV	D*96VC0403BNA*	23,000	18,400	14.5	12	22,200	18,200	23,200	8.2	13,000	800	7998750
	CA*F3636*6D*+TXV	D*96VC0603BNA*	23,000	18,400	14.5	12	22,200	18,200	23,200	8.2	13,000	810	7998751
	CA*F3636*6D*+TXV	D*96VC0803BNA*	23,000	18,400	14.5	12	22,200	18,200	23,200	8.2	13,000	810	7998752
	CHPF3636B6C*	D*80VC0603B*A*	23,200	19,200	14.5	12.0	22,400	18,700	22,800	8.2	13,000	750	9949477
	CHPF3636B6C*	D*80VC0803B*A*	23,200	19,200	14.5	12.0	22,400	18,700	22,800	8.2	13,000	750	9949481
	CHPF3636B6C*	D*80HE0603B*A*	23,200	18,600	14.5	12	22,400	18,400	23,200	8.2	13,000	860	7998774
	CHPF3636B6C*	D*96VE0302BNA*	23,000	18,400	14.5	12	22,200	18,200	22,800	8.2	13,000	800	7998775
	CHPF3636B6C*	D*96VE0402BNA*	23,000	18,400	14.5	12	22,200	18,200	22,800	8.2	13,000	820	7998776
	CHPF3636B6C*	D*96VE0603BNA*	23,000	18,400	14.5	12	22,200	18,200	22,800	8.2	13,000	840	7998777
	CHPF3636B6C*	D*96VE0803BNA*	23,000	18,400	14.5	12	22,200	18,200	22,800	8.2	13,000	770	7998778
	CHPF3636B6C*	D*80VC0604B*A*	23,000	18,400	14.5	12	22,200	18,200	22,800	8.2	13,000	850	7998779
	CHPF3636B6C*	D*96VC0403BNA*	23,000	18,400	14.5	12	22,200	18,200	23,200	8.2	13,000	800	7998780
	CHPF3636B6C*	D*96VC0603BNA*	23,000	18,400	14.5	12	22,200	18,200	23,200	8.2	13,000	810	7998781
	CHPF3636B6C*	D*96VC0803BNA*	23,000	18,400	14.5	12	22,200	18,200	23,200	8.2	13,000	810	7998782
CHPF3636B6C*+EEP+TXV		23,200	18,600	14	11.5	22,400	18,400	23,200	8.2	13,000	870	7998762	
CHPF3636B6C*+MBVC1200**-1A*		23,600	18,900	14.5	12	22,800	18,700	23,200	8.5	13,000	855	7998763	
CHPF3636B6C*+MBVC1200**-1A*+TXV		23,600	18,900	15	12.5	22,800	18,700	23,200	8.5	13,000	855	7998764	
CHPF3636B6C*+TXV	D*80VC0603B*A*	23,200	19,200	14.5	12.0	22,400	18,700	22,800	8.2	13,000	750	9949478	

See Notes on Page 35.

OUTDOOR UNIT	Indoor Units		COOLING RATINGS [^]				TVA RATINGS ³		HEATING RATINGS [^]			CFM	AHRI #
	Coils/Air Handlers	Furnaces	TOTAL	SENS.	SEER ¹	EER ²	TOTAL	SENS.	Hi ⁴	HSPF ⁵	Low ⁶		
DZ14SN 0241A* (cont.)	CHPF3636B6C*+TXV	D*80VC0803B*A*	23,200	19,200	14.5	12.0	22,400	18,700	22,800	8.2	13,000	750	9949482
	CHPF3636B6C*+TXV	D*80HE0603B*A*	23,200	18,600	14.5	12	22,400	18,400	23,200	8.2	13,000	860	7998765
	CHPF3636B6C*+TXV	D*96VE0302BNA*	23,000	18,400	15	12.5	22,200	18,200	22,800	8.2	13,000	800	7998766
	CHPF3636B6C*+TXV	D*96VE0402BNA*	23,000	18,400	15	12.5	22,200	18,200	22,800	8.2	13,000	820	7998767
	CHPF3636B6C*+TXV	D*96VE0603BNA*	23,000	18,400	15	12.5	22,200	18,200	22,800	8.2	13,000	840	7998768
	CHPF3636B6C*+TXV	D*96VE0803BNA*	23,000	18,400	15	12.5	22,200	18,200	22,800	8.2	13,000	770	7998769
	CHPF3636B6C*+TXV	D*80VC0604B*A*	23,000	18,400	15	12.5	22,200	18,200	22,800	8.2	13,000	850	7998770
	CHPF3636B6C*+TXV	D*96VC0403BNA*	23,000	18,400	14.5	12	22,200	18,200	23,200	8.2	13,000	800	7998771
	CHPF3636B6C*+TXV	D*96VC0603BNA*	23,000	18,400	14.5	12	22,200	18,200	23,200	8.2	13,000	810	7998772
	CHPF3636B6C*+TXV	D*96VC0803BNA*	23,000	18,400	14.5	12	22,200	18,200	23,200	8.2	13,000	810	7998773
	DV24PTCB14A*		23,200	18,600	14.5	12	22,400	18,400	23,200	8.2	13,400	860	7998738
	DV25PTCB14A*		23,200	18,600	14.5	12	22,400	18,400	23,200	8.3	13,200	850	8996280
DV29PTCB14A*		23,200	18,600	15	12.5	22,400	18,400	23,200	8.5	13,200	795	8996281	
DZ14SN 0301A*	ARUF29B14A*+TXV		27,600	20,400	14	11.5	26,600	20,000	28,400	8.2	16,200	870	7998783
	ARUF31B14A*		28,000	20,800	14	12	27,000	20,200	27,800	8.2	16,200	910	7998784
	ASPT36C14A*		27,800	20,600	14.5	12	26,800	20,000	28,000	8.5	16,000	960	8202548
	ASPT37B14A*		28,000	20,800	14.5	12	27,000	20,200	28,000	8.2	16,000	945	8245405
	ASPT37C14A*		28,400	21,000	15	12.5	27,400	20,600	28,000	8.5	16,000	1,045	8245406
	AWUF31XX16A*		27,800	20,600	14	12	26,800	20,000	28,000	8.2	17,000	980	7998786
	AWUF31XX16A*+TXV		27,800	20,600	14.5	12	26,800	20,000	28,000	8.2	17,000	980	7998787
	CA*F3137*6A*	D*80VC0603B*A*	28,400	21,600	14.0	11.5	27,400	21,200	28,000	8.2	16,400	950	9949485
	CA*F3137*6A*	D*80VC0803B*A*	28,400	21,600	14.0	11.5	27,400	21,200	28,000	8.2	16,400	950	9949491
	CA*F3137*6A*	D*80HE0603B*A*	28,400	21,000	14	11.5	27,400	20,600	28,000	8.2	16,400	860	7998796
	CA*F3137*6A*	D*96VE0603BNA*	28,400	21,000	14	11.5	27,400	20,600	28,200	8.5	16,400	1,020	7998797
	CA*F3137*6A*	D*96VE0803BNA*	28,400	21,000	14	11.5	27,400	20,600	28,200	8.5	16,600	990	7998798
	CA*F3137*6A*	D*80VC0604B*A*	28,400	21,000	14	11.5	27,400	20,600	28,200	8.5	16,600	995	7998799
	CA*F3137*6A*	D*96VC0403BNA*	28,400	21,000	14.5	11.5	27,400	20,600	28,200	8.5	16,600	1,000	7998800
	CA*F3137*6A*	D*96VC0603BNA*	28,400	21,000	14.5	11.5	27,400	20,600	28,200	8.5	16,400	910	7998801
	CA*F3137*6A*	D*96VC0803BNA*	28,400	21,000	14.5	11.5	27,400	20,600	28,200	8.5	16,400	920	7998802
	CA*F3137*6A*+EEP+TXV		28,000	20,800	14	11.5	27,000	20,200	28,000	8.2	16,600	870	7998788
	CA*F3137*6A*+TXV	D*80VC0603B*A*	28,400	21,600	14.5	12.0	27,400	21,200	28,000	8.2	16,400	950	9949486
	CA*F3137*6A*+TXV	D*80VC0803B*A*	28,400	21,600	14.5	12.0	27,400	21,200	28,000	8.2	16,400	950	9949492
	CA*F3137*6A*+TXV	D*80HE0603B*A*	28,400	21,000	14.5	12	27,400	20,600	28,000	8.2	16,400	860	7998789
	CA*F3137*6A*+TXV	D*96VE0603BNA*	28,400	21,000	14.5	12	27,400	20,600	28,200	8.5	16,600	1,020	7998790
	CA*F3137*6A*+TXV	D*96VE0803BNA*	28,400	21,000	14.5	12	27,400	20,600	28,200	8.5	16,600	990	7998791
	CA*F3137*6A*+TXV	D*80VC0604B*A*	28,400	21,000	14.5	12	27,400	20,600	28,200	8.5	16,600	995	7998792
	CA*F3137*6A*+TXV	D*96VC0403BNA*	28,400	21,000	15	12	27,400	20,600	28,200	8.5	16,600	1,000	7998793
	CA*F3137*6A*+TXV	D*96VC0603BNA*	28,400	21,000	15	12	27,400	20,600	28,200	8.5	16,400	910	7998794
	CA*F3137*6A*+TXV	D*96VC0803BNA*	28,400	21,000	15	12	27,400	20,600	28,200	8.5	16,400	920	7998795
	CA*F3642*6D*+MBVC1200**-1A*		28,000	20,800	14.5	12	27,000	20,200	28,000	8.5	16,200	855	7998803
	CA*F3642*6D*+MBVC1200**-1A*+TXV		28,000	20,800	15	12.5	27,000	20,200	28,000	8.5	16,200	855	7998804
	CA*F3642*6D*+MBVC1600**-1A*		28,000	20,800	14.5	12	27,000	20,200	28,000	8.5	16,200	855	7998805
	CA*F3642*6D*+MBVC1600**-1A*+TXV		28,000	20,800	15	12.5	27,000	20,200	28,000	8.5	16,200	855	7998806
	CA*F3743*6D*	D*80VC0805D*A*	28,200	21,400	14.5	12.0	27,200	21,000	28,000	8.5	16,200	1,000	9949499
	CA*F3743*6D*	D*80VC0805C*A*	28,200	20,800	14.5	12	27,200	20,400	28,000	8.5	16,200	880	7998811
CA*F3743*6D*	D*96VC0804CNA*	28,200	20,800	14.5	12	27,200	20,400	28,000	8.5	16,200	940	7998812	
CA*F3743*6D*	D*96VC1005CNA*	28,200	20,800	14.5	12	27,200	20,400	28,000	8.5	16,200	865	7998813	
CA*F3743*6D*+TXV	D*80VC0805D*A*	28,200	21,400	15.0	12.5	27,200	21,000	28,000	8.5	16,200	1,000	9949500	

See Notes on Page 35.

OUTDOOR UNIT	Indoor Units		COOLING RATINGS [^]				TVA RATINGS ³		HEATING RATINGS [^]			CFM	AHRI #
	Coils/Air Handlers	Furnaces	TOTAL	SENS.	SEER ¹	EER ²	TOTAL	SENS.	Hi ⁴	HSPF ⁵	Low ⁶		
DZ14SN 0301A* (cont.)	CA*F3743*6D*+TXV		28,000	20,800	14	11.5	27,000	20,200	28,000	8.2	16,600	870	7998807
	CA*F3743*6D*+TXV	D*80VC0805C*A*	28,200	20,800	15	12.5	27,200	20,400	28,000	8.5	16,200	880	7998808
	CA*F3743*6D*+TXV	D*96VC0804CNA*	28,200	20,800	15	12.5	27,200	20,400	28,000	8.5	16,200	940	7998809
	CA*F3743*6D*+TXV	D*96VC1005CNA*	28,200	20,800	15	12.5	27,200	20,400	28,000	8.5	16,200	865	7998810
	CHPF3636B6C*	D*80VC0603B*A*	28,000	21,400	14.0	11.5	27,000	20,800	28,000	8.2	16,200	950	9949487
	CHPF3636B6C*	D*80VC0803B*A*	28,000	21,400	14.0	11.5	27,000	20,800	28,000	8.2	16,200	950	9949493
	CHPF3636B6C*	D*80HE0603B*A*	28,000	20,800	14	11.5	27,000	20,200	28,000	8.2	16,200	860	7998821
	CHPF3636B6C*	D*96VE0603BNA*	28,400	21,000	14	11.5	27,400	20,600	28,400	8.5	16,600	1,020	7998822
	CHPF3636B6C*	D*96VE0803BNA*	28,400	21,000	14	11.5	27,400	20,600	28,400	8.5	16,600	990	7998823
	CHPF3636B6C*	D*80VC0604B*A*	28,400	21,000	14	11.5	27,400	20,600	28,400	8.5	16,600	995	7998824
	CHPF3636B6C*	D*96VC0403BNA*	28,400	21,000	14	11.5	27,400	20,600	28,400	8.5	16,600	1,000	7998825
	CHPF3636B6C*	D*96VC0603BNA*	28,200	20,800	14	11.5	27,200	20,400	28,400	8.5	16,400	910	7998826
	CHPF3636B6C*	D*96VC0803BNA*	28,200	20,800	14	11.5	27,200	20,400	28,400	8.5	16,400	920	7998827
	CHPF3636B6C*+TXV	D*80VC0603B*A*	28,000	21,400	14.5	12.0	27,000	20,800	28,000	8.2	16,200	950	9949488
	CHPF3636B6C*+TXV	D*80VC0803B*A*	28,000	21,400	14.5	12.0	27,000	20,800	28,000	8.2	16,200	950	9949494
	CHPF3636B6C*+TXV	D*80HE0603B*A*	28,000	20,800	14.5	12	27,000	20,200	28,000	8.2	16,200	860	7998814
	CHPF3636B6C*+TXV	D*96VE0603BNA*	28,400	21,000	14.5	12	27,400	20,600	28,400	8.5	16,600	1,020	7998815
	CHPF3636B6C*+TXV	D*96VE0803BNA*	28,400	21,000	14.5	12	27,400	20,600	28,400	8.5	16,600	990	7998816
	CHPF3636B6C*+TXV	D*80VC0604B*A*	28,400	21,000	14.5	12	27,400	20,600	28,400	8.5	16,600	995	7998817
	CHPF3636B6C*+TXV	D*96VC0403BNA*	28,400	21,000	14.5	12	27,400	20,600	28,400	8.5	16,600	1,000	7998818
	CHPF3636B6C*+TXV	D*96VC0603BNA*	28,200	20,800	14.5	12	27,200	20,400	28,400	8.5	16,400	910	7998819
	CHPF3636B6C*+TXV	D*96VC0803BNA*	28,200	20,800	14.5	12	27,200	20,400	28,400	8.5	16,400	920	7998820
	CHPF3642C6C*	D*80VC0805D*A*	28,000	21,400	14.5	12.0	27,000	20,800	28,000	8.2	16,200	1,000	9949501
	CHPF3642C6C*	D*80VC0805C*A*	28,000	20,800	14.5	12	27,000	20,200	28,000	8.2	16,200	880	7998835
	CHPF3642C6C*	D*96VC0804CNA*	28,200	20,800	14.5	12	27,200	20,400	28,400	8.5	16,400	940	7998836
	CHPF3642C6C*	D*96VC1005CNA*	28,000	20,800	14.5	12	27,000	20,200	28,000	8.2	16,200	865	7998837
	CHPF3642C6C*+MBVC1200**-1A*		28,000	20,800	14.5	12	27,000	20,200	28,000	8.5	16,200	855	7998828
	CHPF3642C6C*+MBVC1200**-1A*+TXV		28,000	20,800	15	12.5	27,000	20,200	28,000	8.5	16,200	855	7998829
	CHPF3642C6C*+MBVC1600**-1A*		28,000	20,800	14.5	12	27,000	20,200	28,000	8.5	16,200	855	7998830
	CHPF3642C6C*+MBVC1600**-1A*+TXV		28,000	20,800	15	12.5	27,000	20,200	28,000	8.5	16,200	855	7998831
	CHPF3642C6C*+TXV	D*80VC0805D*A*	28,000	21,400	15.0	12.5	27,000	20,800	28,000	8.2	16,200	1,000	9949502
	CHPF3642C6C*+TXV	D*80VC0805C*A*	28,000	20,800	15	12.5	27,000	20,200	28,000	8.2	16,200	880	7998832
	CHPF3642C6C*+TXV	D*96VC0804CNA*	28,200	20,800	15	12.5	27,200	20,400	28,400	8.5	16,400	940	7998833
	CHPF3642C6C*+TXV	D*96VC1005CNA*	28,000	20,800	15	12.5	27,000	20,200	28,000	8.2	16,200	865	7998834
	CHPF3743C6B*+EEP+TXV		28,000	20,800	14	11.5	27,000	20,200	28,000	8.2	17,000	870	7998838
	CSCF3642N6D*	D*80VC0603B*A*	28,400	21,600	14.0	11.5	27,400	21,200	28,200	8.5	16,200	950	9949489
	CSCF3642N6D*	D*80VC0803B*A*	28,400	21,600	14.0	11.5	27,400	21,200	28,200	8.5	16,200	950	9949495
	CSCF3642N6D*	D*80VC0804C*A*	28,400	21,600	14.0	11.5	27,400	21,200	28,200	8.5	16,600	950	9949497
	CSCF3642N6D*	D*80VC0805D*A*	28,400	21,600	14.5	12.0	27,400	21,200	28,200	8.5	16,200	1000	9949503
	CSCF3642N6D*	D*80HE0603B*A*	28,400	21,000	14	11.5	27,400	20,600	28,200	8.5	16,200	860	7998854
CSCF3642N6D*	D*96VE0603BNA*	28,400	21,000	14	11.5	27,400	20,600	28,200	8.5	16,600	1,020	7998855	
CSCF3642N6D*	D*96VE0803BNA*	28,400	21,000	14	11.5	27,400	20,600	28,200	8.5	16,600	990	7998856	
CSCF3642N6D*	D*80VC0604B*A*	28,400	21,000	14	11.5	27,400	20,600	28,200	8.5	16,600	995	7998857	
CSCF3642N6D*	D*80VC0805C*A*	28,400	21,000	14.5	12	27,400	20,600	28,200	8.5	16,200	880	7998858	
CSCF3642N6D*	D*96VC0403BNA*	28,400	21,000	14	11.5	27,400	20,600	28,200	8.5	16,600	1,000	7998859	
CSCF3642N6D*	D*96VC0603BNA*	28,400	21,000	14	11.5	27,400	20,600	28,200	8.5	16,400	910	7998860	
CSCF3642N6D*	D*96VC0803BNA*	28,400	21,000	14	11.5	27,400	20,600	28,200	8.5	16,400	920	7998861	
CSCF3642N6D*	D*96VC0804CNA*	28,400	21,000	14.5	12	27,400	20,600	28,200	8.5	16,400	940	7998862	

See Notes on Page 35.

OUTDOOR UNIT	Indoor Units		COOLING RATINGS [^]				TVA RATINGS ³		HEATING RATINGS [^]			CFM	AHRI #
	Coils/Air Handlers	Furnaces	TOTAL	SENS.	SEER ¹	EER ²	TOTAL	SENS.	Hi ⁴	HSPF ⁵	Low ⁶		
DZ14SN 0301A* (cont.)	CSCF3642N6D*	D*96VC1005CNA*	28,400	21,000	14.5	12	27,400	20,600	28,200	8.5	16,200	865	7998863
	CSCF3642N6D*+EEP+TXV		28,000	20,800	14	11.5	27,000	20,200	28,800	8.2	17,000	870	7998839
	CSCF3642N6D*+MBVC1200**-1A*		28,400	21,000	14.5	12	27,400	20,600	28,200	8.5	16,200	855	7998840
	CSCF3642N6D*+MBVC1200**-1A*+TXV		28,400	21,000	15	12.5	27,400	20,600	28,200	8.5	16,200	855	7998841
	CSCF3642N6D*+MBVC1600**-1A*		28,400	21,000	14.5	12	27,400	20,600	28,200	8.5	16,200	855	7998842
	CSCF3642N6D*+MBVC1600**-1A*+TXV		28,400	21,000	15	12.5	27,400	20,600	28,200	8.5	16,200	855	7998843
	CSCF3642N6D*+TXV	D*80VC0603B*A*	28,400	21,600	14.5	12.0	27,400	21,200	28,200	8.5	16,200	950	9949490
	CSCF3642N6D*+TXV	D*80VC0803B*A*	28,400	21,600	14.5	12.0	27,400	21,200	28,200	8.5	16,200	950	9949496
	CSCF3642N6D*+TXV	D*80VC0804C*A*	28,400	21,600	14.5	12.0	27,400	21,200	28,200	8.5	16,600	950	9949498
	CSCF3642N6D*+TXV	D*80VC0805D*A*	28,400	21,600	15.0	12.5	27,400	21,200	28,200	8.5	16,200	1000	9949504
	CSCF3642N6D*+TXV	D*80HE0603B*A*	28,400	21,000	14.5	12	27,400	20,600	28,200	8.5	16,200	860	7998844
	CSCF3642N6D*+TXV	D*96VE0603BNA*	28,400	21,000	14.5	12	27,400	20,600	28,200	8.5	16,600	1,020	7998845
	CSCF3642N6D*+TXV	D*96VE0803BNA*	28,400	21,000	14.5	12	27,400	20,600	28,200	8.5	16,600	990	7998846
	CSCF3642N6D*+TXV	D*80VC0604B*A*	28,400	21,000	14.5	12	27,400	20,600	28,200	8.5	16,600	995	7998847
	CSCF3642N6D*+TXV	D*80VC0805C*A*	28,400	21,000	15	12.5	27,400	20,600	28,200	8.5	16,200	880	7998848
	CSCF3642N6D*+TXV	D*96VC0403BNA*	28,400	21,000	14.5	12	27,400	20,600	28,200	8.5	16,600	1,000	7998849
	CSCF3642N6D*+TXV	D*96VC0603BNA*	28,400	21,000	14.5	12	27,400	20,600	28,200	8.5	16,400	910	7998850
	CSCF3642N6D*+TXV	D*96VC0803BNA*	28,400	21,000	14.5	12	27,400	20,600	28,200	8.5	16,400	920	7998851
	CSCF3642N6D*+TXV	D*96VC0804CNA*	28,400	21,000	15	12.5	27,400	20,600	28,200	8.5	16,400	940	7998852
	CSCF3642N6D*+TXV	D*96VC1005CNA*	28,400	21,000	15	12.5	27,400	20,600	28,200	8.5	16,200	865	7998853
DV25PTCB14A*		27,400	20,200	14	12	26,400	19,800	28,000	8.2	16,000	875	8996282	
DV30PTCC14A*		27,800	20,600	15	12.5	26,800	20,000	28,000	8.5	16,000	860	7998785	
DV37PTCB14A*		27,600	20,400	14.5	12	26,600	20,000	28,000	8.3	16,000	925	8996283	
DV37PTCC14A*		27,800	20,600	15	12.5	26,800	20,000	28,000	8.5	16,000	930	8996284	
DZ14SN 0361A*	ARUF37C14A*+TXV		34,600	25,600	14	11.5	33,400	25,000	32,800	8.2	19,000	1,010	7998864
	ARUF37D14A*		34,400	25,400	14	11.5	33,200	24,800	32,800	8.2	20,000	1,070	7998865
	ASPT37B14A*		34,000	25,200	14	12	32,800	24,600	32,600	8.2	20,000	1,120	8245407
	ASPT37C14A*		34,600	25,600	14.5	12	33,400	25,000	32,600	8.5	20,000	1,120	8245409
	ASPT47C14A*		34,400	25,400	14.5	12	33,200	24,800	32,600	8.5	20,000	1,075	8245410
	ASPT47D14A*		34,800	25,800	15	12.5	33,600	25,200	32,600	8.5	20,000	1,180	8245411
	CA*F3137*6A*+MBVC1200**-1A*+TXV		34,600	25,600	14	11.5	33,400	25,000	32,000	8.2	19,000	1,050	9119202
	CA*F3137*6A*+TXV	D*80VC0603B*A*	34,600	25,800	14.0	11.5	33,400	25,200	32,200	8.2	19,600	1,100	9949505
	CA*F3137*6A*+TXV	D*80VC0803B*A*	34,600	25,800	14.0	11.5	33,400	25,200	32,200	8.2	19,600	1,150	9949506
	CA*F3137*6A*+TXV	D*80HE0603B*A*	34,600	25,600	14	11.5	33,400	25,000	32,200	8.2	19,600	1,100	7998867
	CA*F3137*6A*+TXV	D*96VE0603BNA*	34,600	25,600	14	11.5	33,400	25,000	32,000	8.2	19,600	1,020	7998868
	CA*F3137*6A*+TXV	D*96VE0803BNA*	34,600	25,600	14	11.5	33,400	25,000	32,000	8.2	19,600	1,010	7998869
	CA*F3137*6A*+TXV	D*80VC0604B*A*	34,600	25,600	14	11.5	33,400	25,000	32,000	8.2	19,600	1,100	7998870
	CA*F3137*6A*+TXV	D*96VC0403BNA*	34,600	25,600	14	11.5	33,400	25,000	32,000	8.2	19,600	1,080	7998871
	CA*F3137*6A*+TXV	D*96VC0603BNA*	34,600	25,600	14	11.5	33,400	25,000	32,000	8.2	19,600	1,060	7998872
	CA*F3137*6A*+TXV	D*96VC0803BNA*	34,600	25,600	14	11.5	33,400	25,000	32,000	8.2	19,600	1,100	7998873
	CA*F4860*6D*	D*80VC0805D*A*	34,600	25,800	14.0	11.5	33,400	25,200	32,200	8.5	20,000	1,100	9949507
	CA*F4860*6D*	D*80HE0805C*A*	34,600	25,600	14	11.5	33,400	25,000	32,200	8.5	20,000	1,030	7998883
	CA*F4860*6D*	D*80HE1005C*A*	35,600	26,400	14	11.5	34,200	25,800	32,200	8.5	20,000	1,090	7998884
	CA*F4860*6D*	D*96VE1004CNA*	35,600	26,400	14	11.5	34,200	25,800	32,800	8.5	20,000	1,200	7998885
CA*F4860*6D*	D*80VC0805C*A*	34,600	25,600	14	11.5	33,400	25,000	32,200	8.5	20,000	1,070	7998886	
CA*F4860*6D*	D*80VC1005C*A*	34,600	25,600	14	11.5	33,400	25,000	32,200	8.5	20,000	1,070	7998887	
CA*F4860*6D*	D*96VC0804CNA*	34,800	25,800	14	11.5	33,600	25,200	32,400	8.5	20,000	1,080	7998888	
CA*F4860*6D*	D*96VC1005CNA*	34,800	25,800	14	11.5	33,600	25,200	32,400	8.5	20,000	1,100	7998889	

See Notes on Page 35.

OUTDOOR UNIT	Indoor Units		COOLING RATINGS [^]				TVA RATINGS ³		HEATING RATINGS [^]			CFM	AHRI #
	Coils/Air Handlers	Furnaces	TOTAL	SENS.	SEER ¹	EER ²	TOTAL	SENS.	Hi ⁴	HSPF ⁵	Low ⁶		
DZ14SN 0361A* (cont.)	CA*F4860*6D*+MBVC2000**-1A*		35,600	26,400	14.5	12	34,200	25,800	32,800	9	20,000	1,160	7998874
	CA*F4860*6D*+MBVC2000**-1A*+TXV		35,600	26,400	15	12.5	34,200	25,800	32,800	9	20,000	1,160	7998875
	CA*F4860*6D*+TXV	D*80VC0805D*A*	34,600	25,800	14.5	12.0	33,400	25,200	32,200	8.5	20,000	1,100	9949508
	CA*F4860*6D*+TXV	D*80HE0805C*A*	34,600	25,600	14.5	12	33,400	25,000	32,200	8.5	20,000	1,030	7998876
	CA*F4860*6D*+TXV	D*80HE1005C*A*	35,600	26,400	14.5	12	34,200	25,800	32,200	8.5	20,000	1,090	7998877
	CA*F4860*6D*+TXV	D*96VE1004CNA*	35,600	26,400	14.5	12	34,200	25,800	32,800	8.5	20,000	1,200	7998878
	CA*F4860*6D*+TXV	D*80VC0805C*A*	34,600	25,600	14.5	12	33,400	25,000	32,200	8.5	20,000	1,070	7998879
	CA*F4860*6D*+TXV	D*80VC1005C*A*	34,600	25,600	14.5	12	33,400	25,000	32,200	8.5	20,000	1,070	7998880
	CA*F4860*6D*+TXV	D*96VC0804CNA*	34,800	25,800	14.5	12	33,600	25,200	32,400	8.5	20,000	1,080	7998881
	CA*F4860*6D*+TXV	D*96VC1005CNA*	34,800	25,800	14.5	12	33,600	25,200	32,400	8.5	20,000	1,100	7998882
	CA*F4961*6D*	D*80HE0805D*A*	35,600	26,400	14.5	11.5	34,200	25,800	33,000	8.5	20,000	1,275	7998898
	CA*F4961*6D*	D*96VE1205DNA*	35,000	26,000	14.5	11.5	33,800	25,200	32,600	8.5	20,000	1,045	7998899
	CA*F4961*6D*	D*96VC1205DNA*	34,800	25,800	14.5	12	33,600	25,200	32,600	8.5	20,000	1,050	7998900
	CA*F4961*6D*+EEP+TXV		35,400	26,200	14	11.5	34,000	25,600	33,200	8.2	20,600	1,070	7998890
	CA*F4961*6D*+MBVC1200**-1A*		35,600	26,400	14.5	12	34,200	25,800	32,400	8.5	20,000	1,050	7998891
	CA*F4961*6D*+MBVC1200**-1A*+TXV		35,600	26,400	15	12.5	34,200	25,800	32,400	8.5	20,000	1,050	7998892
	CA*F4961*6D*+MBVC1600**-1A*		35,600	26,400	14.5	12	34,200	25,800	32,400	8.5	20,000	1,075	7998893
	CA*F4961*6D*+MBVC1600**-1A*+TXV		35,600	26,400	15	12.5	34,200	25,800	32,400	8.5	20,000	1,075	7998894
	CA*F4961*6D*+TXV	D*80HE0805D*A*	35,600	26,400	15	12	34,200	25,800	33,000	8.5	20,000	1,275	7998895
	CA*F4961*6D*+TXV	D*96VE1205DNA*	35,000	26,000	15	12	33,800	25,200	32,600	8.5	20,000	1,045	7998896
	CA*F4961*6D*+TXV	D*96VC1205DNA*	34,800	25,800	15	12.5	33,600	25,200	32,600	8.5	20,000	1,050	7998897
	CAPT4961*4A*+EEP		34,600	25,600	14	11.5	33,400	25,000	33,200	8.2	20,600	1,070	9119203
	CHPF3743C6B*	D*80VC0805D*A*	35,000	26,000	14.0	11.5	33,800	25,400	32,000	8.5	20,000	1,100	9949509
	CHPF3743C6B*	D*80HE0805C*A*	35,000	26,000	14	11.5	33,800	25,200	32,000	8.5	20,000	1,030	7998909
	CHPF3743C6B*	D*80HE1005C*A*	34,600	25,600	14	11.5	33,400	25,000	32,800	8.5	20,000	1,030	7998910
	CHPF3743C6B*	D*96VE1004CNA*	35,000	26,000	14	11.5	33,800	25,200	32,800	8.5	20,000	1,200	7998911
	CHPF3743C6B*	D*80VC0805C*A*	35,000	26,000	14	11.5	33,800	25,200	32,000	8.5	20,000	1,070	7998912
	CHPF3743C6B*	D*80VC1005C*A*	34,600	25,600	14	11.5	33,400	25,000	32,000	8.5	20,000	1,070	7998913
	CHPF3743C6B*	D*96VC0804CNA*	34,600	25,600	14	11.5	33,400	25,000	32,000	8.5	20,000	1,080	7998914
	CHPF3743C6B*	D*96VC1005CNA*	34,600	25,600	14	11.5	33,400	25,000	32,000	8.5	20,000	1,100	7998915
	CHPF3743C6B*+EEP+TXV		34,600	25,600	14	11.5	33,400	25,000	33,000	8.2	20,000	1,080	7998901
	CHPF3743C6B*+TXV	D*80VC0805D*A*	35,000	26,000	14.5	12.0	33,800	25,400	32,000	8.5	20,000	1,100	9949510
	CHPF3743C6B*+TXV	D*80HE0805C*A*	35,000	26,000	14.5	12	33,800	25,200	32,000	8.5	20,000	1,030	7998902
	CHPF3743C6B*+TXV	D*80HE1005C*A*	34,600	25,600	14.5	12	33,400	25,000	32,800	8.5	20,000	1,030	7998903
	CHPF3743C6B*+TXV	D*96VE1004CNA*	35,000	26,000	14.5	12	33,800	25,200	32,800	8.5	20,000	1,200	7998904
	CHPF3743C6B*+TXV	D*80VC0805C*A*	35,000	26,000	14.5	12	33,800	25,200	32,000	8.5	20,000	1,070	7998905
	CHPF3743C6B*+TXV	D*80VC1005C*A*	34,600	25,600	14.5	12	33,400	25,000	32,000	8.5	20,000	1,070	7998906
	CHPF3743C6B*+TXV	D*96VC0804CNA*	34,600	25,600	14.5	12	33,400	25,000	32,000	8.5	20,000	1,080	7998907
	CHPF3743C6B*+TXV	D*96VC1005CNA*	34,600	25,600	14.5	12	33,400	25,000	32,000	8.5	20,000	1,100	7998908
	CHPF4860D6D*	D*80HE0805D*A*	35,600	26,400	14	11.5	34,200	25,800	32,800	8.5	20,000	1,275	7998923
	CHPF4860D6D*	D*96VE1205DNA*	35,000	26,000	14	11.5	33,800	25,200	32,000	8.5	20,000	1,045	7998924
	CHPF4860D6D*	D*96VC1205DNA*	35,000	26,000	14	11.5	33,800	25,200	32,000	8.5	20,000	1,050	7998925
	CHPF4860D6D*+MBVC1600**-1A*		35,400	26,200	14.5	12	34,000	25,600	32,400	8.5	20,000	1,075	7998916
	CHPF4860D6D*+MBVC1600**-1A*+TXV		35,400	26,200	15	12.5	34,000	25,600	32,400	8.5	20,000	1,075	7998917
	CHPF4860D6D*+MBVC2000**-1A*		36,000	26,600	14.5	12	34,600	26,000	32,600	8.5	20,000	1,275	7998918
	CHPF4860D6D*+MBVC2000**-1A*+TXV		36,000	26,600	15	12.5	34,600	26,000	32,600	8.5	20,000	1,275	7998919
	CHPF4860D6D*+TXV	D*80HE0805D*A*	35,600	26,400	14.5	12	34,200	25,800	32,800	8.5	20,000	1,275	7998920
	CHPF4860D6D*+TXV	D*96VE1205DNA*	35,000	26,000	14.5	12	33,800	25,200	32,000	8.5	20,000	1,045	7998921

See Notes on Page 35.

OUTDOOR UNIT	Indoor Units		COOLING RATINGS [^]				TVA RATINGS ³		HEATING RATINGS [^]			CFM	AHRI #
	Coils/Air Handlers	Furnaces	TOTAL	SENS.	SEER ¹	EER ²	TOTAL	SENS.	Hi ⁴	HSPF ⁵	Low ⁶		
DZ14SN 0361A* (cont.)	CHPF4860D6D*+TXV	D*96VC1205DNA*	35,000	26,000	14.5	12	33,800	25,200	32,000	8.5	20,000	1,050	7998922
	CSCF4860N6D*	D*80VC0805D*A*	35,000	26,000	14.0	11.5	33,800	25,400	32,000	8.5	20,000	1,100	9949511
	CSCF4860N6D*	D*80HE0805C*A*	35,000	26,000	14	11.5	33,800	25,200	32,000	8.5	20,000	1,030	7998943
	CSCF4860N6D*	D*80HE0805D*A*	35,600	26,400	14	11.5	34,200	25,800	32,800	8.5	20,000	1,275	7998944
	CSCF4860N6D*	D*80HE1005C*A*	35,000	26,000	14	11.5	33,800	25,200	32,800	8.5	20,000	1,030	7998945
	CSCF4860N6D*	D*96VE1004CNA*	35,600	26,400	14	11.5	34,200	25,800	32,800	8.5	20,000	1,230	7998946
	CSCF4860N6D*	D*96VE1205DNA*	35,000	26,000	14	11.5	33,800	25,200	32,000	8.5	20,000	1,045	7998947
	CSCF4860N6D*	D*80VC0805C*A*	35,000	26,000	14	11.5	33,800	25,200	32,000	8.5	20,000	1,070	7998948
	CSCF4860N6D*	D*80VC1005C*A*	35,000	26,000	14	11.5	33,800	25,200	32,000	8.5	20,000	1,070	7998949
	CSCF4860N6D*	D*96VC0804CNA*	35,000	26,000	14	11.5	33,800	25,200	32,000	8.5	20,000	1,080	7998950
	CSCF4860N6D*	D*96VC1005CNA*	35,000	26,000	14	11.5	33,800	25,200	32,000	8.5	20,000	1,100	7998951
	CSCF4860N6D*	D*96VC1205DNA*	35,000	26,000	14	11.5	33,800	25,200	32,000	8.5	20,000	1,050	7998952
	CSCF4860N6D*+EEP+TXV		34,600	25,600	14	11.5	33,400	25,000	33,000	8.2	20,000	1,080	7998926
	CSCF4860N6D*+MBVC1200**-1A*		35,000	26,000	14	11.5	33,800	25,200	32,000	8.5	20,000	1,050	7998927
	CSCF4860N6D*+MBVC1200**-1A*+TXV		35,000	26,000	14.5	12	33,800	25,200	32,000	8.5	20,000	1,050	7998928
	CSCF4860N6D*+MBVC1600**-1A*		35,400	26,200	14.5	12	34,000	25,600	32,400	8.5	20,000	1,075	7998929
	CSCF4860N6D*+MBVC1600**-1A*+TXV		35,400	26,200	15	12.5	34,000	25,600	32,400	8.5	20,000	1,075	7998930
	CSCF4860N6D*+MBVC2000**-1A*		36,000	26,600	14.5	12	34,600	26,000	32,600	8.5	20,000	1,275	7998931
	CSCF4860N6D*+MBVC2000**-1A*+TXV		36,000	26,600	15	12.5	34,600	26,000	32,600	8.5	20,000	1,275	7998932
	CSCF4860N6D*+TXV	D*80VC0805D*A*	35,000	26,000	14.5	12.0	33,800	25,400	32,000	8.5	20,000	1,100	9949512
	CSCF4860N6D*+TXV	D*80HE0805C*A*	35,000	26,000	14.5	12	33,800	25,200	32,000	8.5	20,000	1,030	7998933
	CSCF4860N6D*+TXV	D*80HE0805D*A*	35,600	26,400	14.5	12	34,200	25,800	32,800	8.5	20,000	1,275	7998934
	CSCF4860N6D*+TXV	D*80HE1005C*A*	35,000	26,000	14.5	12	33,800	25,200	32,800	8.5	20,000	1,030	7998935
	CSCF4860N6D*+TXV	D*96VE1004CNA*	35,600	26,400	14.5	12	34,200	25,800	32,800	8.5	20,000	1,230	7998936
	CSCF4860N6D*+TXV	D*96VE1205DNA*	35,000	26,000	14.5	12	33,800	25,200	32,000	8.5	20,000	1,045	7998937
	CSCF4860N6D*+TXV	D*80VC0805C*A*	35,000	26,000	14.5	12	33,800	25,200	32,000	8.5	20,000	1,070	7998938
	CSCF4860N6D*+TXV	D*80VC1005C*A*	35,000	26,000	14.5	12	33,800	25,200	32,000	8.5	20,000	1,070	7998939
	CSCF4860N6D*+TXV	D*96VC0804CNA*	35,000	26,000	14.5	12	33,800	25,200	32,000	8.5	20,000	1,080	7998940
	CSCF4860N6D*+TXV	D*96VC1005CNA*	35,000	26,000	14.5	12	33,800	25,200	32,000	8.5	20,000	1,100	7998941
	CSCF4860N6D*+TXV	D*96VC1205DNA*	35,000	26,000	14.5	12	33,800	25,200	32,000	8.5	20,000	1,050	7998942
	DV36PTCC14A*		34,400	25,400	14	11.5	33,200	24,800	32,600	8.2	20,000	1,150	7998866
	DV37PTCC14A*		34,400	25,400	14.5	12	33,200	24,800	32,600	8.5	20,000	1,130	8996285
DV37PTCD14A*		34,400	25,400	14.5	12	33,200	24,800	32,600	8.5	20,000	1,145	8996286	
DV49PTCD14A*		34,600	25,600	15	12.5	33,400	25,000	32,600	8.5	20,000	1,075	8996287	
DZ14SN 0421A*	ARUF43C14A*+TXV		39,000	29,600	14	11.5	37,600	29,000	40,000	8.2	24,000	1,300	7998953
	ARUF47D14A*		39,000	29,600	14	11.5	37,600	29,000	39,000	8.2	24,000	1,325	7998954
	ASPT47C14A*		39,500	30,000	14	12	38,000	29,400	39,000	8.2	23,000	1,320	8245413
	ASPT47D14A*		38,500	29,200	15	12.5	37,200	28,600	38,000	8.5	23,000	1,205	8245415
	ASPT49D14A*		40,000	30,400	15	12.5	38,500	29,600	39,000	8.5	23,000	1,320	8245416
	ASPT59C14A*		39,500	30,000	14	12	38,000	29,400	39,000	8.2	23,000	1,255	8245418
	CA*F4860*6D*	D*80VC0805D*A*	39,500	30,800	14.0	11.5	38,000	30,000	39,000	8.5	23,600	1,400	9949513
	CA*F4860*6D*	D*80HE0805C*A*	39,500	30,000	14	11.5	38,000	29,400	39,500	8.5	23,600	1,325	7998971
	CA*F4860*6D*	D*80HE0805D*A*	39,500	30,000	14	11.5	38,000	29,400	39,500	8.5	23,600	1,280	7998972
	CA*F4860*6D*	D*80HE1005C*A*	39,500	30,000	14	11.5	38,000	29,400	39,000	8.5	23,600	1,225	7998973
	CA*F4860*6D*	D*96VE1004CNA*	39,500	30,000	14	11.5	38,000	29,400	39,000	8.5	23,600	1,230	7998974
	CA*F4860*6D*	D*96VE1205DNA*	39,500	30,000	14	11.5	38,000	29,400	39,500	8.5	23,600	1,300	7998975
	CA*F4860*6D*	D*80VC0805C*A*	39,500	30,000	14	11.5	38,000	29,400	39,000	8.5	23,600	1,240	7998976
	CA*F4860*6D*	D*80VC1005C*A*	39,500	30,000	14	11.5	38,000	29,400	39,000	8.5	23,600	1,250	7998977

See Notes on Page 35.

OUTDOOR UNIT	Indoor Units		COOLING RATINGS [^]				TVA RATINGS ³		HEATING RATINGS [^]			CFM	AHRI #
	Coils/Air Handlers	Furnaces	TOTAL	SENS.	SEER ¹	EER ²	TOTAL	SENS.	Hi ⁴	HSPF ⁵	Low ⁶		
DZ14SN 0421A* (cont.)	CA*F4860*6D*	D*96VC0804CNA*	39,500	30,000	14	11.5	38,000	29,400	39,500	8.5	23,600	1,310	7998978
	CA*F4860*6D*	D*96VC1005CNA*	39,500	30,000	14	11.5	38,000	29,400	39,500	8.5	23,600	1,300	7998979
	CA*F4860*6D*	D*96VC1205DNA*	39,500	30,000	14	11.5	38,000	29,400	39,000	8.5	23,600	1,250	7998980
	CA*F4860*6D*+EEP+TXV		39,500	30,000	14	11.5	38,000	29,400	39,500	8.2	24,000	1,300	7998956
	CA*F4860*6D*+MBVC1600**-1A*		40,000	30,400	14.5	12	38,500	29,600	39,000	8.5	23,600	1,300	7998957
	CA*F4860*6D*+MBVC1600**-1A*+TXV		40,000	30,400	15	12.5	38,500	29,600	39,000	8.5	23,600	1,300	7998958
	CA*F4860*6D*+MBVC2000**-1A*		40,500	30,800	14.5	12	39,000	30,000	39,000	9	23,600	1,310	7998959
	CA*F4860*6D*+MBVC2000**-1A*+TXV		40,500	30,800	15	12.5	39,000	30,000	39,000	9	23,600	1,310	7998960
	CA*F4860*6D*+TXV	D*80VC0805D*A*	39,500	30,800	14.5	12.0	38,000	30,000	39,000	8.5	23,600	1,400	9949514
	CA*F4860*6D*+TXV	D*80HE0805C*A*	39,500	30,000	14.5	12	38,000	29,400	39,500	8.5	23,600	1,325	7998961
	CA*F4860*6D*+TXV	D*80HE0805D*A*	39,500	30,000	14.5	12	38,000	29,400	39,500	8.5	23,600	1,280	7998962
	CA*F4860*6D*+TXV	D*80HE1005C*A*	39,500	30,000	14.5	12	38,000	29,400	39,000	8.5	23,600	1,225	7998963
	CA*F4860*6D*+TXV	D*96VE1004CNA*	39,500	30,000	14.5	12	38,000	29,400	39,000	8.5	23,600	1,230	7998964
	CA*F4860*6D*+TXV	D*96VE1205DNA*	39,500	30,000	14.5	12	38,000	29,400	39,500	8.5	23,600	1,300	7998965
	CA*F4860*6D*+TXV	D*80VC0805C*A*	39,500	30,000	14.5	12	38,000	29,400	39,000	8.5	23,600	1,240	7998966
	CA*F4860*6D*+TXV	D*80VC1005C*A*	39,500	30,000	14.5	12	38,000	29,400	39,000	8.5	23,600	1,250	7998967
	CA*F4860*6D*+TXV	D*96VC0804CNA*	39,500	30,000	14.5	12	38,000	29,400	39,500	8.5	23,600	1,310	7998968
	CA*F4860*6D*+TXV	D*96VC1005CNA*	39,500	30,000	14.5	12	38,000	29,400	39,500	8.5	23,600	1,300	7998969
	CA*F4860*6D*+TXV	D*96VC1205DNA*	39,500	30,000	14.5	12	38,000	29,400	39,000	8.5	23,600	1,250	7998970
	CA*F4961*6D*	D*80VC0805D*A*	40,000	31,000	14.5	12.0	38,500	30,400	39,500	8.5	23,800	1,400	9949515
	CA*F4961*6D*	D*80HE0805C*A*	40,000	30,400	14.5	12	38,500	29,600	39,500	8.5	23,800	1,325	7998996
	CA*F4961*6D*	D*80HE0805D*A*	40,000	30,400	14.5	12	38,500	29,600	39,500	8.5	23,800	1,280	7998997
	CA*F4961*6D*	D*80HE1005C*A*	40,000	30,400	14.5	12	38,500	29,600	39,500	8.5	23,800	1,225	7998998
	CA*F4961*6D*	D*96VE1004CNA*	40,000	30,400	14.5	12	38,500	29,600	39,500	8.5	23,800	1,230	7998999
	CA*F4961*6D*	D*96VE1205DNA*	40,000	30,400	14.5	12	38,500	29,600	40,000	8.5	24,000	1,300	7999000
	CA*F4961*6D*	D*80VC0805C*A*	40,000	30,400	14.5	12	38,500	29,600	39,500	8.5	23,800	1,240	7999001
	CA*F4961*6D*	D*80VC1005C*A*	40,000	30,400	14.5	12	38,500	29,600	39,500	8.5	23,800	1,250	7999002
	CA*F4961*6D*	D*96VC0804CNA*	40,000	30,400	14.5	12	38,500	29,600	39,500	8.5	23,800	1,310	7999003
	CA*F4961*6D*	D*96VC1005CNA*	40,000	30,400	14.5	12	38,500	29,600	39,500	8.5	23,800	1,300	7999004
	CA*F4961*6D*	D*96VC1205DNA*	40,000	30,400	14.5	12	38,500	29,600	39,500	8.5	23,800	1,250	7999005
	CA*F4961*6D*+EEP+TXV		40,000	30,400	14	12	38,500	29,600	40,000	8.5	24,000	1,300	7998981
	CA*F4961*6D*+MBVC1600**-1A*		40,000	30,400	14.5	12	38,500	29,600	39,500	9	23,800	1,300	7998982
	CA*F4961*6D*+MBVC1600**-1A*+TXV		40,000	30,400	15	12.5	38,500	29,600	39,500	9	23,800	1,300	7998983
	CA*F4961*6D*+MBVC2000**-1A*		40,500	30,800	14.5	12	39,000	30,000	39,000	9	23,800	1,310	7998984
	CA*F4961*6D*+MBVC2000**-1A*+TXV		40,500	30,800	15	12.5	39,000	30,000	39,000	9	23,800	1,310	7998985
	CA*F4961*6D*+TXV	D*80VC0805D*A*	40,000	31,000	15.0	12.5	38,500	30,400	39,500	8.5	23,800	1,400	9949516
	CA*F4961*6D*+TXV	D*80HE0805C*A*	40,000	30,400	15	12.5	38,500	29,600	39,500	8.5	23,800	1,325	7998986
	CA*F4961*6D*+TXV	D*80HE0805D*A*	40,000	30,400	15	12.5	38,500	29,600	39,500	8.5	23,800	1,280	7998987
	CA*F4961*6D*+TXV	D*80HE1005C*A*	40,000	30,400	15	12.5	38,500	29,600	39,500	8.5	23,800	1,225	7998988
	CA*F4961*6D*+TXV	D*96VE1004CNA*	40,000	30,400	15	12.5	38,500	29,600	39,500	8.5	23,800	1,230	7998989
	CA*F4961*6D*+TXV	D*96VE1205DNA*	40,000	30,400	15	12.5	38,500	29,600	40,000	8.5	24,000	1,300	7998990
	CA*F4961*6D*+TXV	D*80VC0805C*A*	40,000	30,400	15	12.5	38,500	29,600	39,500	8.5	23,800	1,240	7998991
CA*F4961*6D*+TXV	D*80VC1005C*A*	40,000	30,400	15	12.5	38,500	29,600	39,500	8.5	23,800	1,250	7998992	
CA*F4961*6D*+TXV	D*96VC0804CNA*	40,000	30,400	15	12.5	38,500	29,600	39,500	8.5	23,800	1,310	7998993	
CA*F4961*6D*+TXV	D*96VC1005CNA*	40,000	30,400	15	12.5	38,500	29,600	39,500	8.5	23,800	1,300	7998994	
CA*F4961*6D*+TXV	D*96VC1205DNA*	40,000	30,400	15	12.5	38,500	29,600	39,500	8.5	23,800	1,250	7998995	
CSCF4860N6D*	D*80VC0805D*A*	40,000	31,000	14.5	12.0	38,500	30,400	39,500	8.5	23,600	1,400	9949517	
CHPF4860D6D*	D*80HE0805D*A*	39,500	30,000	14	12	38,000	29,400	39,500	8.5	23,600	1,280	7999014	

See Notes on Page 35.

OUTDOOR UNIT	Indoor Units		COOLING RATINGS [^]				TVA RATINGS ³		HEATING RATINGS [^]			CFM	AHRI #
	Coils/Air Handlers	Furnaces	TOTAL	SENS.	SEER ¹	EER ²	TOTAL	SENS.	Hi ⁴	HSPF ⁵	Low ⁶		
DZ14SN 0421A* (cont.)	CHPF4860D6D*	D*96VE1205DNA*	40,000	30,400	14	12	38,500	29,600	39,500	8.5	23,600	1,300	7999015
	CHPF4860D6D*	D*96VC1205DNA*	39,500	30,000	14	12	38,000	29,400	39,000	8.5	23,600	1,250	7999016
	CHPF4860D6D*+EEP+TXV		39,000	29,600	14	11.5	37,600	29,000	39,500	8.5	24,000	1,300	7999006
	CHPF4860D6D*+MBVC1600**-1A*		40,000	30,400	14.5	12	38,500	29,600	39,000	8.5	23,600	1,300	7999007
	CHPF4860D6D*+MBVC1600**-1A*+TXV		40,000	30,400	15	12.5	38,500	29,600	39,000	8.5	23,600	1,300	7999008
	CHPF4860D6D*+MBVC2000**-1A*		40,000	30,400	14.5	12	38,500	29,600	39,000	9	23,600	1,310	7999009
	CHPF4860D6D*+MBVC2000**-1A*+TXV		40,000	30,400	15	12.5	38,500	29,600	39,000	9	23,600	1,310	7999010
	CHPF4860D6D*+TXV	D*80HE0805D*A*	39,500	30,000	14.5	12	38,000	29,400	39,500	8.5	23,600	1,280	7999011
	CHPF4860D6D*+TXV	D*96VE1205DNA*	40,000	30,400	14.5	12	38,500	29,600	39,500	8.5	23,600	1,300	7999012
	CHPF4860D6D*+TXV	D*96VC1205DNA*	39,500	30,000	14.5	12	38,000	29,400	39,000	8.5	23,600	1,250	7999013
	CSCF4860N6D*	D*80HE0805C*A*	40,500	30,800	14	12	39,000	30,000	39,500	8.5	23,600	1,325	7999032
	CSCF4860N6D*	D*80HE0805D*A*	40,500	30,800	14	12	39,000	30,000	39,500	8.5	23,600	1,280	7999033
	CSCF4860N6D*	D*80HE1005C*A*	40,500	30,800	14	12	39,000	30,000	39,000	8.5	23,600	1,225	7999034
	CSCF4860N6D*	D*96VE1004CNA*	40,500	30,800	14	12	39,000	30,000	39,000	8.5	23,600	1,230	7999035
	CSCF4860N6D*	D*96VE1205DNA*	40,000	30,400	14	12	38,500	29,600	40,000	8.5	23,600	1,300	7999036
	CSCF4860N6D*	D*80VC0805C*A*	40,000	30,400	14.5	12	38,500	29,600	39,500	8.5	23,600	1,240	7999037
	CSCF4860N6D*	D*80VC1005C*A*	40,000	30,400	14.5	12	38,500	29,600	39,500	8.5	23,600	1,250	7999038
	CSCF4860N6D*	D*96VC0804CNA*	40,000	30,400	14.5	12	38,500	29,600	39,500	8.5	23,600	1,310	7999039
	CSCF4860N6D*	D*96VC1005CNA*	40,000	30,400	14.5	12	38,500	29,600	39,500	8.5	23,600	1,300	7999040
	CSCF4860N6D*	D*96VC1205DNA*	40,000	30,400	14.5	12	38,500	29,600	39,500	8.5	23,600	1,250	7999041
	CSCF4860N6D*+EEP+TXV		40,500	30,800	14	12	39,000	30,000	40,000	8.5	24,000	1,300	7999017
	CSCF4860N6D*+MBVC1600**-1A*		40,000	30,400	14.5	12	38,500	29,600	39,500	8.5	23,600	1,300	7999018
	CSCF4860N6D*+MBVC1600**-1A*+TXV		40,000	30,400	15	12.5	38,500	29,600	39,500	8.5	23,600	1,300	7999019
	CSCF4860N6D*+MBVC2000**-1A*		40,000	30,400	14.5	12.5	38,500	29,600	39,500	9	23,600	1,310	7999020
	CSCF4860N6D*+MBVC2000**-1A*+TXV		40,000	30,400	15	13	38,500	29,600	39,000	9	23,600	1,310	7999021
	CSCF4860N6D*+TXV	D*80VC0805D*A*	40,000	31,000	15.0	12.0	38,500	30,400	39,500	8.5	23,600	1,400	9949518
	CSCF4860N6D*+TXV	D*80HE0805C*A*	40,500	30,800	14.5	12	39,000	30,000	39,500	8.5	23,600	1,325	7999022
	CSCF4860N6D*+TXV	D*80HE0805D*A*	40,500	30,800	14.5	12	39,000	30,000	39,500	8.5	23,600	1,280	7999023
	CSCF4860N6D*+TXV	D*80HE1005C*A*	40,500	30,800	14.5	12	39,000	30,000	39,000	8.5	23,600	1,225	7999024
	CSCF4860N6D*+TXV	D*96VE1004CNA*	40,500	30,800	14.5	12	39,000	30,000	39,000	8.5	23,600	1,230	7999025
	CSCF4860N6D*+TXV	D*96VE1205DNA*	40,000	30,400	14.5	12	38,500	29,600	40,000	8.5	23,600	1,300	7999026
	CSCF4860N6D*+TXV	D*80VC0805C*A*	40,000	30,400	15	12	38,500	29,600	39,500	8.5	23,600	1,240	7999027
	CSCF4860N6D*+TXV	D*80VC1005C*A*	40,000	30,400	15	12	38,500	29,600	39,500	8.5	23,600	1,250	7999028
	CSCF4860N6D*+TXV	D*96VC0804CNA*	40,000	30,400	15	12	38,500	29,600	39,500	8.5	23,600	1,310	7999029
	CSCF4860N6D*+TXV	D*96VC1005CNA*	40,000	30,400	15	12	38,500	29,600	39,500	8.5	23,600	1,300	7999030
	CSCF4860N6D*+TXV	D*96VC1205DNA*	40,000	30,400	15	12	38,500	29,600	39,500	8.5	23,600	1,250	7999031
	DV42PTCD14A*		39,500	30,000	15	12.5	38,000	29,400	39,000	8.5	23,000	1,220	7998955
	DV49PTCD14A*		40,000	30,400	15	12.5	38,500	29,600	39,000	9	23,000	1,320	8996290
	DV59PTCC14A*		39,500	30,000	14	12	38,000	29,400	39,000	8.2	23,000	1,290	8996288
	DV59PTCD14A*		39,500	30,000	14.5	12.2	38,000	29,400	39,000	8.2	23,000	1,365	8996289
DZ14SN 0481A*	ARUF49D14A*+TXV		44,000	34,800	14	11.5	42,500	34,000	44,000	8.5	27,600	1,450	9119195
	ARUF61D14A*+TXV		45,000	35,600	14	11.5	43,500	34,800	44,500	8.5	28,000	1,555	7999042
	ASPT49D14A*		44,500	35,200	14.5	12	43,000	34,400	44,000	8.5	27,600	1,430	8245419
	ASPT59C14A*		45,000	35,600	14	12	43,500	34,800	44,500	8.2	27,600	1,430	8245421
	ASPT61D14A*		45,000	35,600	14.5	12	43,500	34,800	44,500	8.5	27,600	1,555	8245422
	CA*F4961*6D*	D*80HE0805D*A*	45,500	36,000	14	11.5	44,000	35,000	44,500	9	27,600	1,500	7999053
	CA*F4961*6D*	D*96VE1205DNA*	45,500	36,000	14	11.5	44,000	35,000	44,500	9	27,600	1,520	7999054
	CA*F4961*6D*	D*96VC1205DNA*	45,500	36,000	14	11.5	44,000	35,000	44,500	9	27,600	1,530	7999055

See Notes on Page 35.

OUTDOOR UNIT	Indoor Units		COOLING RATINGS [^]				TVA RATINGS ³		HEATING RATINGS [^]			CFM	AHRI #
	Coils/Air Handlers	Furnaces	TOTAL	SENS.	SEER ¹	EER ²	TOTAL	SENS.	Hi ⁴	HSPF ⁵	Low ⁶		
DZ14SN 0481A* (cont.)	CA*F4961*6D*+EEP+TXV		45,000	35,600	14	11.5	43,500	34,800	45,000	9	27,600	1,555	7999045
	CA*F4961*6D*+MBVC1600**-1A*		45,500	36,000	14.5	12	44,000	35,000	44,500	9	27,600	1,500	7999046
	CA*F4961*6D*+MBVC1600**-1A*+TXV		45,500	36,000	15	12.5	44,000	35,000	44,500	9	27,600	1,500	7999047
	CA*F4961*6D*+MBVC2000**-1A*		46,000	36,400	14.5	12	44,500	35,400	44,500	9	27,600	1,570	7999048
	CA*F4961*6D*+MBVC2000**-1A*+TXV		46,000	36,400	15	12.5	44,500	35,400	44,500	9	27,600	1,570	7999049
	CA*F4961*6D*+TXV	D*80HE0805D*A*	45,500	36,000	14.5	12	44,000	35,000	44,500	9	27,600	1,500	7999050
	CA*F4961*6D*+TXV	D*96VE1205DNA*	45,500	36,000	14.5	12	44,000	35,000	44,500	9	27,600	1,520	7999051
	CA*F4961*6D*+TXV	D*96VC1205DNA*	45,500	36,000	14.5	12	44,000	35,000	44,500	9	27,600	1,530	7999052
	CHPF4860D6D*	D*80HE0805D*A*	45,000	35,600	14	11.5	43,500	34,800	44,000	9	27,600	1,500	7999064
	CHPF4860D6D*	D*96VE1205DNA*	45,000	35,600	14	11.5	43,500	34,800	44,500	9	27,600	1,520	7999065
	CHPF4860D6D*	D*96VC1205DNA*	45,000	35,600	14	11.5	43,500	34,800	44,500	9	27,600	1,530	7999066
	CHPF4860D6D*+EEP+TXV		45,000	35,600	14	11.5	43,500	34,800	44,500	9	27,600	1,555	7999056
	CHPF4860D6D*+MBVC1600**-1A*		45,000	35,600	14.5	12	43,500	34,800	44,000	9	27,600	1,500	7999057
	CHPF4860D6D*+MBVC1600**-1A*+TXV		45,000	35,600	15	12.5	43,500	34,800	44,000	9	27,600	1,500	7999058
	CHPF4860D6D*+MBVC2000**-1A*		45,500	36,000	14.5	12	44,000	35,000	44,000	9	27,600	1,570	7999059
	CHPF4860D6D*+MBVC2000**-1A*+TXV		45,500	36,000	15	12.5	44,000	35,000	44,000	9	27,600	1,570	7999060
	CHPF4860D6D*+TXV	D*80HE0805D*A*	45,000	35,600	14.5	12	43,500	34,800	44,000	9	27,600	1,500	7999061
	CHPF4860D6D*+TXV	D*96VE1205DNA*	45,000	35,600	14.5	12	43,500	34,800	44,500	9	27,600	1,520	7999062
	CHPF4860D6D*+TXV	D*96VC1205DNA*	45,000	35,600	14.5	12	43,500	34,800	44,500	9	27,600	1,530	7999063
	CSCF4860N6D*	D*80HE0805D*A*	45,000	35,600	14	11.5	43,500	34,800	44,000	9	27,600	1,500	7999075
	CSCF4860N6D*	D*96VE1205DNA*	45,000	35,600	14	11.5	43,500	34,800	44,000	9	27,600	1,520	7999076
	CSCF4860N6D*	D*96VC1205DNA*	45,000	35,600	14	11.5	43,500	34,800	44,000	9	27,600	1,530	7999077
	CSCF4860N6D*+EEP+TXV		45,000	35,600	14	11.5	43,500	34,800	45,000	9	27,600	1,555	7999067
	CSCF4860N6D*+MBVC1600**-1A*		45,000	35,600	14	11.5	43,500	34,800	44,000	9	27,600	1,500	7999068
	CSCF4860N6D*+MBVC1600**-1A*+TXV		45,000	35,600	15	12	43,500	34,800	44,000	9	27,600	1,500	7999069
	CSCF4860N6D*+MBVC2000**-1A*		45,500	36,000	14	12	44,000	35,000	44,000	9	27,600	1,570	7999070
	CSCF4860N6D*+MBVC2000**-1A*+TXV		45,500	36,000	15	12.5	44,000	35,000	44,000	9	27,600	1,570	7999071
	CSCF4860N6D*+TXV	D*80HE0805D*A*	45,000	35,600	14.5	12	43,500	34,800	44,000	9	27,600	1,500	7999072
	CSCF4860N6D*+TXV	D*96VE1205DNA*	45,000	35,600	14.5	12	43,500	34,800	44,000	9	27,600	1,520	7999073
	CSCF4860N6D*+TXV	D*96VC1205DNA*	45,000	35,600	14.5	12	43,500	34,800	44,000	9	27,600	1,530	7999074
DV48PTCD14A*		45,000	35,600	14.5	12	43,500	34,800	44,500	9	27,600	1,550	7999044	
DV59PTCC14A*		45,000	35,600	14	12	43,500	34,800	44,500	8.5	27,600	1,485	8996291	
DV59PTCD14A*		45,000	35,600	14.5	12.2	43,500	34,800	44,500	8.2	27,400	1,580	8996292	
DV61PTCD14A*		45,500	36,000	15	12.5	44,000	35,000	44,500	9	27,200	1,455	8996293	
DZ14SN 0491A*	ARUF49C14A*+TXV		44,500	33,400	14	11.5	43,000	32,600	46,000	8.5	27,600	1,400	7999078
	ARUF61D14A*		44,500	33,400	14	12	43,000	32,600	47,000	8.5	28,000	1,450	7999079
	ASPT49D14A*		45,500	34,200	15	12.5	44,000	33,400	45,500	8.5	26,000	1,425	8245426
	ASPT59C14A*		45,000	33,800	14.5	12	43,500	33,000	46,000	8.5	26,000	1,430	8245424
	ASPT61D14A*		46,000	34,600	15	12.5	44,500	33,800	46,000	8.5	26,000	1,630	8245427
	CA*F4961*6D*	D*80VC0805D*A*	45,500	35,200	14.0	12.0	44,000	34,400	47,500	8.5	28,000	1,500	9949519
	CA*F4961*6D*	D*80HE0805C*A*	45,500	34,200	14	12	44,000	33,400	47,000	8.5	28,000	1,515	7999096
	CA*F4961*6D*	D*80HE0805D*A*	45,500	34,200	14.5	12	44,000	33,400	47,000	8.5	28,000	1,480	7999097
	CA*F4961*6D*	D*80HE1005C*A*	45,500	34,200	14	12	44,000	33,400	47,500	8.5	28,000	1,575	7999098
	CA*F4961*6D*	D*96VE1004CNA*	45,500	34,200	14	12	44,000	33,400	47,500	8.5	28,000	1,585	7999099
	CA*F4961*6D*	D*96VE1205DNA*	45,500	34,200	14.5	12	44,000	33,400	47,000	8.5	28,000	1,475	7999100
	CA*F4961*6D*	D*80VC0805C*A*	45,500	34,200	14	12	44,000	33,400	47,500	8.5	28,000	1,510	7999101
	CA*F4961*6D*	D*80VC1005C*A*	45,500	34,200	14	12	44,000	33,400	47,500	8.5	28,000	1,520	7999102
	CA*F4961*6D*	D*96VC0804CNA*	45,500	34,200	14.5	12	44,000	33,400	47,000	8.5	28,000	1,525	7999103

See Notes on Page 35.

OUTDOOR UNIT	Indoor Units		COOLING RATINGS [^]				TVA RATINGS ³		HEATING RATINGS [^]			CFM	AHRI #
	Coils/Air Handlers	Furnaces	TOTAL	SENS.	SEER ¹	EER ²	TOTAL	SENS.	Hi ⁴	HSPF ⁵	Low ⁶		
DZ14SN 0491A*	CA*F4961*6D*	D*96VC1005CNA*	45,500	34,200	14	12	44,000	33,400	47,500	8.5	28,000	1,520	7999104
	CA*F4961*6D*	D*96VC1205DNA*	45,500	34,200	14	12	44,000	33,400	47,500	8.5	28,000	1,525	7999105
	CA*F4961*6D*+EEP+TXV		45,000	33,800	14	11.5	43,500	33,000	47,500	8.5	28,600	1,600	7999081
	CA*F4961*6D*+MBVC1600**-1A*		45,500	34,200	14.5	12	44,000	33,400	47,000	8.5	28,000	1,500	7999082
	CA*F4961*6D*+MBVC1600**-1A*+TXV		45,500	34,200	15	12.2	44,000	33,400	47,000	8.5	28,000	1,500	7999083
	CA*F4961*6D*+MBVC2000**-1A*		45,500	34,200	14.5	12.2	44,000	33,400	47,000	9	28,000	1,570	7999084
	CA*F4961*6D*+MBVC2000**-1A*+TXV		45,500	34,200	15	12.5	44,000	33,400	47,000	9	28,000	1,570	7999085
	CA*F4961*6D*+TXV	D*80VC0805D*A*	45,500	35,200	14.5	12.2	44,000	34,400	47,500	8.5	28,000	1,500	9949520
	CA*F4961*6D*+TXV	D*80HE0805C*A*	45,500	34,200	14.5	12.5	44,000	33,400	47,000	8.5	28,000	1,480	7999086
	CA*F4961*6D*+TXV	D*80HE0805D*A*	45,500	34,200	15	12.5	44,000	33,400	47,000	8.5	28,000	1,480	7999087
	CA*F4961*6D*+TXV	D*80HE1005C*A*	45,500	34,200	14.5	12.2	44,000	33,400	47,500	8.5	28,000	1,575	7999088
	CA*F4961*6D*+TXV	D*96VE1004CNA*	45,500	34,200	14.5	12.2	44,000	33,400	47,500	8.5	28,000	1,585	7999089
	CA*F4961*6D*+TXV	D*96VE1205DNA*	45,500	34,200	15	12.5	44,000	33,400	47,000	8.5	28,000	1,475	7999090
	CA*F4961*6D*+TXV	D*80VC0805C*A*	45,500	34,200	14.5	12.2	44,000	33,400	47,500	8.5	28,000	1,510	7999091
	CA*F4961*6D*+TXV	D*80VC1005C*A*	45,500	34,200	14.5	12.2	44,000	33,400	47,500	8.5	28,000	1,520	7999092
	CA*F4961*6D*+TXV	D*96VC0804CNA*	45,500	34,200	15	12.5	44,000	33,400	47,000	8.5	28,000	1,525	7999093
	CA*F4961*6D*+TXV	D*96VC1005CNA*	45,500	34,200	14.5	12	44,000	33,400	47,500	8.5	28,000	1,520	7999094
	CA*F4961*6D*+TXV	D*96VC1205DNA*	45,500	34,200	14.5	12.2	44,000	33,400	47,500	8.5	28,000	1,525	7999095
	CHPF4860D6D*	D*80HE0805D*A*	45,000	33,800	14	11.5	43,500	33,000	47,000	8.5	28,000	1,490	7999114
	CHPF4860D6D*	D*96VE1205DNA*	45,000	33,800	14	11.5	43,500	33,000	47,000	8.5	28,000	1,520	7999115
	CHPF4860D6D*	D*96VC1205DNA*	45,500	34,200	14	12	44,000	33,400	47,000	8.5	28,000	1,525	7999116
	CHPF4860D6D*+EEP+TXV		45,000	33,800	14	11.5	43,500	33,000	47,000	8.5	28,600	1,600	7999106
	CHPF4860D6D*+MBVC1600**-1A*		45,500	34,200	14.5	11.5	44,000	33,400	47,000	8.5	28,000	1,500	7999107
	CHPF4860D6D*+MBVC1600**-1A*+TXV		45,500	34,200	15	12	44,000	33,400	47,000	8.5	28,000	1,500	7999108
	CHPF4860D6D*+MBVC2000**-1A*		45,500	34,200	14.5	12	44,000	33,400	47,000	9	28,000	1,570	7999109
	CHPF4860D6D*+MBVC2000**-1A*+TXV		45,500	34,200	15	12.5	44,000	33,400	47,000	9	28,000	1,570	7999110
	CHPF4860D6D*+TXV	D*80HE0805D*A*	45,000	33,800	14.5	12	43,500	33,000	47,000	8.5	28,000	1,490	7999111
	CHPF4860D6D*+TXV	D*96VE1205DNA*	45,000	33,800	14.5	12	43,500	33,000	47,000	8.5	28,000	1,520	7999112
	CHPF4860D6D*+TXV	D*96VC1205DNA*	45,500	34,200	14.5	12.2	44,000	33,400	47,000	8.5	28,000	1,525	7999113
	CSCF4860N6D*	D*80VC0805D*A*	45,500	35,200	14.0	11.5	44,000	34,400	47,500	8.5	28,000	1,500	9949521
	CSCF4860N6D*	D*80HE0805C*A*	45,000	33,800	14	11.5	43,500	33,000	47,000	8.5	28,000	1,480	7999132
	CSCF4860N6D*	D*80HE0805D*A*	45,000	33,800	14	11.5	43,500	33,000	47,000	8.5	28,000	1,490	7999133
	CSCF4860N6D*	D*80HE1005C*A*	45,500	34,200	14	11.5	44,000	33,400	47,500	8.5	28,000	1,575	7999134
	CSCF4860N6D*	D*96VE1004CNA*	45,500	34,200	14	11.5	44,000	33,400	47,500	8.5	28,000	1,585	7999135
	CSCF4860N6D*	D*96VE1205DNA*	45,000	33,800	14	11.5	43,500	33,000	47,000	8.5	28,000	1,520	7999136
	CSCF4860N6D*	D*80VC0805C*A*	45,500	34,200	14	11.5	44,000	33,400	47,500	8.5	28,000	1,590	7999137
	CSCF4860N6D*	D*80VC1005C*A*	45,500	34,200	14	11.5	44,000	33,400	47,500	8.5	28,000	1,610	7999138
	CSCF4860N6D*	D*96VC0804CNA*	45,000	33,800	14	11.5	43,500	33,000	47,000	8.5	28,000	1,525	7999139
	CSCF4860N6D*	D*96VC1005CNA*	45,500	34,200	14	11.5	44,000	33,400	47,500	8.5	28,000	1,610	7999140
	CSCF4860N6D*	D*96VC1205DNA*	45,500	34,200	14	12	44,000	33,400	47,500	8.5	28,000	1,525	7999141
	CSCF4860N6D*+EEP+TXV		45,000	33,800	14	11.5	43,500	33,000	47,500	8.5	28,600	1,600	7999117
	CSCF4860N6D*+MBVC1600**-1A*		45,000	33,800	14.5	11.5	43,500	33,000	47,000	8.5	28,000	1,500	7999118
	CSCF4860N6D*+MBVC1600**-1A*+TXV		45,000	33,800	15	12	43,500	33,000	47,000	8.5	28,000	1,500	7999119
	CSCF4860N6D*+MBVC2000**-1A*		45,500	34,200	14.5	12	44,000	33,400	47,000	9	28,000	1,570	7999120
	CSCF4860N6D*+MBVC2000**-1A*+TXV		45,500	34,200	15	12.5	44,000	33,400	47,000	9	28,000	1,570	7999121
CSCF4860N6D*+TXV	D*80VC0805D*A*	45,500	35,200	14.5	12.0	44,000	34,400	47,500	8.5	28,000	1,500	9949522	
CSCF4860N6D*+TXV	D*80HE0805C*A*	45,000	33,800	14.5	12	43,500	33,000	47,000	8.5	28,000	1,480	7999122	
CSCF4860N6D*+TXV	D*80HE0805D*A*	45,000	33,800	14.5	12	43,500	33,000	47,000	8.5	28,000	1,490	7999123	

OUTDOOR UNIT	Indoor Units		COOLING RATINGS [^]				TVA RATINGS ³		HEATING RATINGS [^]			CFM	AHRI #
	Coils/Air Handlers	Furnaces	TOTAL	SENS.	SEER ¹	EER ²	TOTAL	SENS.	Hi ⁴	HSPF ⁵	Low ⁶		
DZ14SN 0491A* (cont.)	CSCF4860N6D*+TXV	D*80HE1005C*A*	45,500	34,200	14.5	12	44,000	33,400	47,500	8.5	28,000	1,575	7999124
	CSCF4860N6D*+TXV	D*96VE1004CNA*	45,500	34,200	14.5	12	44,000	33,400	47,500	8.5	28,000	1,585	7999125
	CSCF4860N6D*+TXV	D*96VE1205DNA*	45,000	33,800	14.5	12	43,500	33,000	47,000	8.5	28,000	1,520	7999126
	CSCF4860N6D*+TXV	D*80VC0805C*A*	45,500	34,200	14.5	12	44,000	33,400	47,500	8.5	28,000	1,590	7999127
	CSCF4860N6D*+TXV	D*80VC1005C*A*	45,500	34,200	14.5	12	44,000	33,400	47,500	8.5	28,000	1,610	7999128
	CSCF4860N6D*+TXV	D*96VC0804CNA*	45,000	33,800	14.5	12	43,500	33,000	47,000	8.5	28,000	1,525	7999129
	CSCF4860N6D*+TXV	D*96VC1005CNA*	45,500	34,200	14.5	12	44,000	33,400	47,500	8.5	28,000	1,610	7999130
	CSCF4860N6D*+TXV	D*96VC1205DNA*	45,500	34,200	14.5	12.2	44,000	33,400	47,500	8.5	28,000	1,525	7999131
	DV48PTCD14A*		45,000	33,800	14.5	12	43,500	33,000	47,000	8.5	28,000	1,540	7999080
	DV59PTCC14A*		44,500	33,400	14.5	12	43,000	32,600	45,500	8.2	28,000	1,485	8996294
	DV59PTCD14A*		45,000	33,800	14.5	12.2	43,500	33,000	45,000	8.2	27,000	1,580	8996295
DV61PTCD14A*		45,000	33,800	15	12.5	43,500	33,000	45,000	8.5	27,000	1,455	8996296	
DZ14SN 0601A*	ASPT61D14A*		56,500	43,000	14	11.5	54,500	42,000	59,000	8.5	36,000	1,800	7999142
	CA*F4961*6D*+EEP+TXV		55,500	42,000	14	11.5	53,500	41,000	59,000	8.5	36,600	1,600	7999144
	CA*F4961*6D*+MBVC2000**-1A*		57,000	43,500	14	11.5	55,000	42,500	59,000	9	36,600	1,770	7999145
	CA*F4961*6D*+MBVC2000**-1A*+TXV		57,000	43,500	14.5	12	55,000	42,500	59,000	9	36,600	1,770	7999146
	CA*F4961*6D*+TXV	D*80HE0805D*A*	56,000	42,500	14	11.5	54,000	41,500	59,000	8.5	36,600	1,700	7999147
	CA*F4961*6D*+TXV	D*96VE1205DNA*	56,000	42,500	14	11.5	54,000	41,500	58,000	8.5	36,000	1,600	7999148
	CA*F4961*6D*+TXV	D*96VC1205DNA*	56,000	42,500	14	11.5	54,000	41,500	58,000	8.5	36,000	1,600	7999149
	CHPF4860D6D*+EEP+TXV		55,000	42,000	14	11.5	53,000	41,000	57,000	8.5	36,600	1,600	7999150
	CHPF4860D6D*+MBVC2000**-1A*		57,000	43,500	14	11.5	55,000	42,500	59,000	9	36,000	1,770	7999151
	CHPF4860D6D*+MBVC2000**-1A*+TXV		57,000	43,500	14.5	12	55,000	42,500	59,000	9	36,000	1,770	7999152
	CHPF4860D6D*+TXV	D*80HE0805D*A*	56,000	42,500	14	11.5	54,000	41,500	59,000	8.5	37,000	1,700	7999153
	CHPF4860D6D*+TXV	D*96VE1205DNA*	56,000	42,500	14	11.5	54,000	41,500	59,000	8.5	36,000	1,600	7999154
	CHPF4860D6D*+TXV	D*96VC1205DNA*	56,000	42,500	14	11.5	54,000	41,500	58,000	8.5	36,600	1,600	7999155
	CSCF4860N6D*+MBVC2000**-1A*		57,000	43,500	14	11.5	55,000	42,500	59,000	9	36,000	1,770	7999156
	CSCF4860N6D*+MBVC2000**-1A*+TXV		57,000	43,500	14	12	55,000	42,500	59,000	9	36,000	1,770	7999157
	CSCF4860N6D*+TXV	D*80HE0805D*A*	56,000	42,500	14	11.5	54,000	41,500	59,000	8.5	36,000	1,700	7999158
	CSCF4860N6D*+TXV	D*96VE1205DNA*	56,000	42,500	14	11.5	54,000	41,500	59,000	8.5	36,000	1,600	7999159
	CSCF4860N6D*+TXV	D*96VC1205DNA*	56,000	42,500	14	11.5	54,000	41,500	58,000	8.5	36,000	1,600	7999160
	DV60PTCD14A*		56,000	42,500	14	11.5	54,000	41,500	59,000	8.5	36,000	1,745	7999143
	DV61PTCD14A*		56,000	42,500	14	11.5	54,000	41,500	59,000	8.5	36,000	1,775	8996297

[^] Rated in accordance with ANSI/AHRI Standard 210/240

¹ Seasonal Energy Efficiency Ratio

³ TVA Rating: BTU/h @ 75°F/ 63°F - 95°F

⁵ HSPF = Heating Seasonal Performance Factor

⁷ CFM at High stage

² Energy Efficiency Ratio @ 80°F/ 67°F/ 95°F

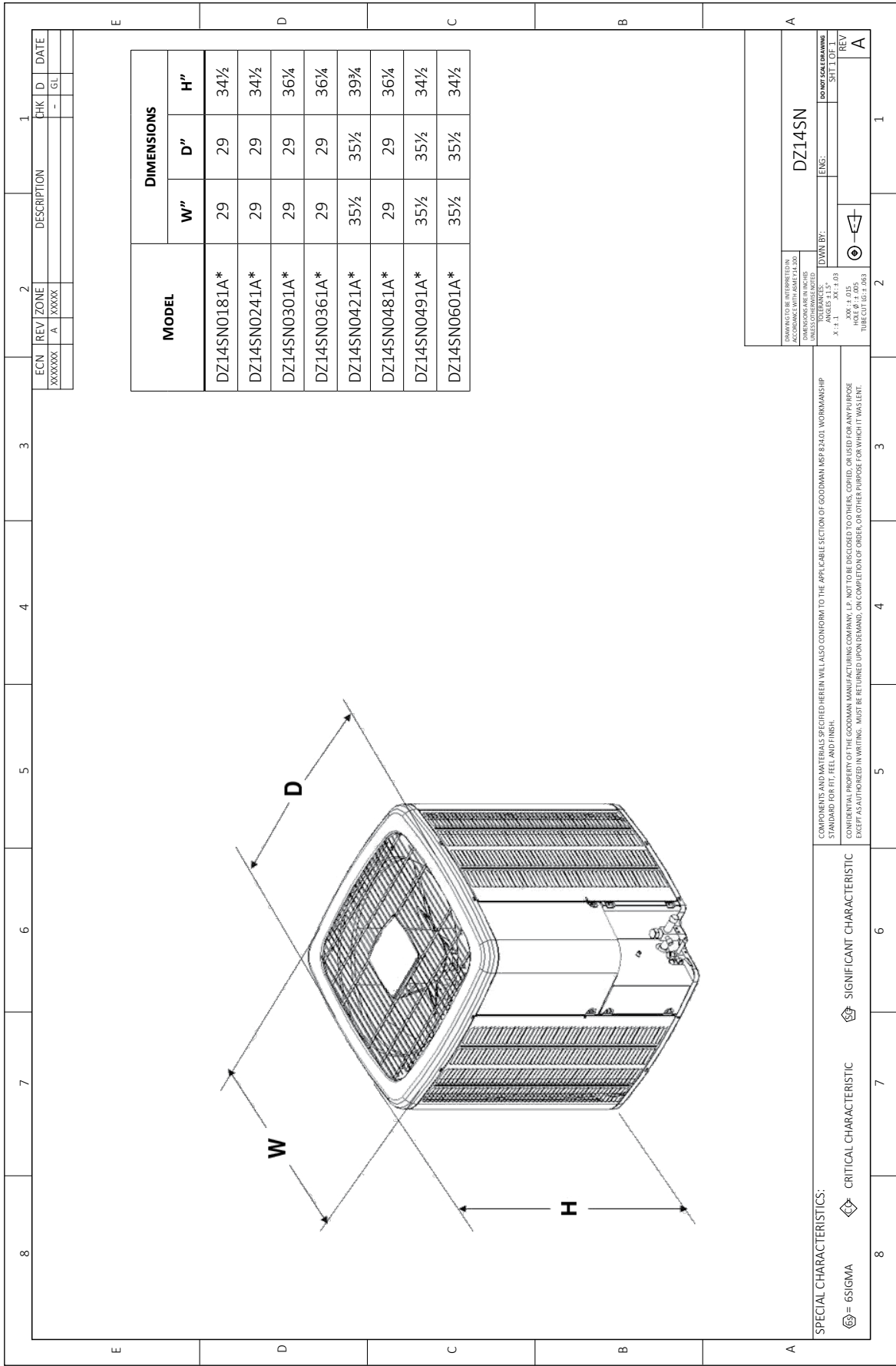
⁴ Rated heating capacity at 47°F outdoor per AHRI 210/240

⁶ Heating capacity at 17°F outdoor

⁸ CFM at Intermediate and low stage

NOTES

- Always check the S&R plate for electrical data on the unit being installed.
- When matching outdoor unit to indoor unit, use the piston supplied with the outdoor unit or that specified on the piston kit chart supplied with the indoor unit.
- EEP - Order from Service Dept. Part No. B13707-38 or new Solid State Board B13707-35S. Part No. B13707-38 is not interchangeable with B13707-35S. The Daikin brand gas furnace contains the EEP cooling time delay.



ECN	REV	ZONE	DESCRIPTION	CHK ID	DATE
XXXXXX	A	XXXX		-	GL

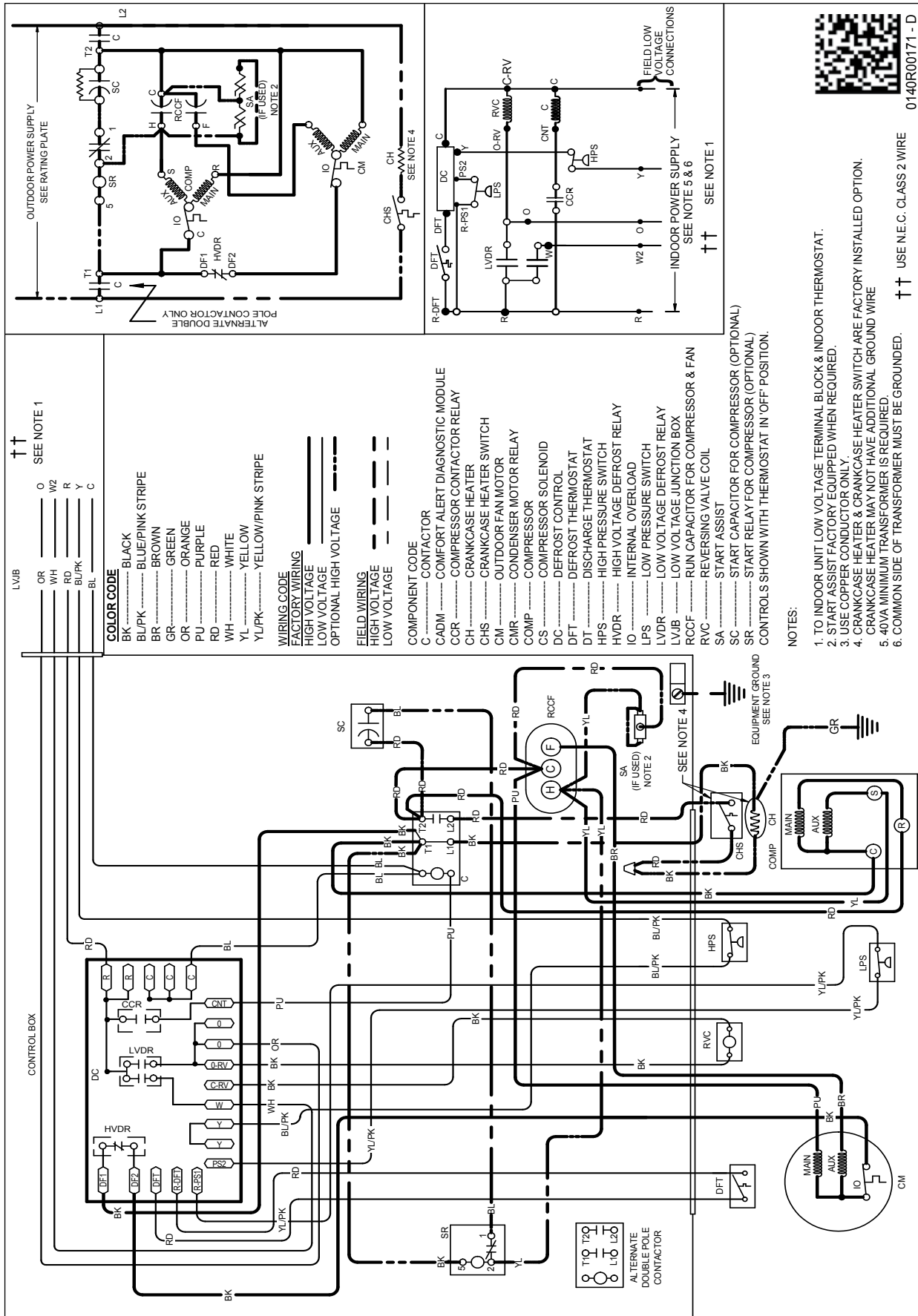
EXAMINED TO BE INTERPRETED IN ACCORDANCE WITH ASTM F141-D10 (SEE NOTE 1) FOR INFORMATION ON THE TOLERANCES AND FINISHES TO BE USED IN THE FABRICATION OF THIS PART.		DZ14SN
DRAWN BY:	ENG:	
TOLERANCES: .XXX ± .015 .XX ± .01 .X ± .1 HOLE Ø ± .005 TUBE CUT ± .003		
DO NOT SCALE DRAWING SHEET 1 OF 1		REV A

SPECIAL CHARACTERISTICS:

⊕ = 6SIGMA ⊕ = CRITICAL CHARACTERISTIC ⊕ = SIGNIFICANT CHARACTERISTIC

COMPONENTS AND MATERIALS SPECIFIED HEREIN WILL ALSO CONFORM TO THE APPLICABLE SECTION OF GOODMAN MSPB2401 WORKMANSHIP STANDARD FOR FIT, FEEL AND FINISH.

CONFIDENTIAL PROPERTY OF THE GOODMAN MANUFACTURING COMPANY, L.P. NOT TO BE DISCLOSED TO OTHERS, COPIED, OR USED FOR ANY PURPOSE EXCEPT AS AUTHORIZED IN WRITING. MUST BE RETURNED UPON DEMAND, ON COMPLETION OF ORDER, OR OTHER PURPOSE FOR WHICH IT WAS LENT.



L1, L2, C, SR, T1, T2, SC, H, C, RCOF, F, S, SA, IO, COMP, MAIN, OR, CHS, SEE NOTE 4

OUTDOOR POWER SUPPLY SEE RATING PLATE

ALTERNATE DOUBLE POLE CONTACTOR ONLY

NOTE 2 (IF USED)

INDOOR POWER SUPPLY SEE NOTE 5 & 6

↑↑ SEE NOTE 1

COLOR CODE

BK	BLACK
BL/PK	BLUE/PINK STRIPE
BR	BROWN
GR	GREEN
OR	ORANGE
PU	PURPLE
RD	RED
WH	WHITE
YL	YELLOW
YL/PK	YELLOW/PINK STRIPE

WIRING CODE

FACTORY WIRING

HIGH VOLTAGE ———

LOW VOLTAGE ———

OPTIONAL HIGH VOLTAGE - - - -

FIELD WIRING

HIGH VOLTAGE ———

LOW VOLTAGE - - - -

COMPONENT CODE

C CONTACTOR

CADM COMFORT ALERT DIAGNOSTIC MODULE

CCR COMPRESSOR CONTACTOR RELAY

CH CRANKCASE HEATER

CHS CRANKCASE HEATER SWITCH

CM OUTDOOR FAN MOTOR

CMR CONDENSER MOTOR RELAY

COMP COMPRESSOR

CS COMPRESSOR SOLENOID

DC DEFROST CONTROL

DFT DEFROST THERMOSTAT

DT DISCHARGE THERMOSTAT

HPS HIGH PRESSURE SWITCH

HVDR HIGH VOLTAGE DEFROST RELAY

IO INTERNAL OVERLOAD

LPS LOW PRESSURE SWITCH

LVDR LOW VOLTAGE DEFROST RELAY

LVJB LOW VOLTAGE JUNCTION BOX

RCCF RUN CAPACITOR FOR COMPRESSOR & FAN

SA START ASSIST

SC START CAPACITOR FOR COMPRESSOR (OPTIONAL)

SR START RELAY FOR COMPRESSOR (OPTIONAL)

CONTROLS SHOWN WITH THERMOSTAT IN 'OFF' POSITION.

NOTES:

1. TO INDOOR UNIT LOW VOLTAGE TERMINAL BLOCK & INDOOR THERMOSTAT.
2. START ASSIST FACTORY EQUIPPED WHEN REQUIRED.
3. USE COPPER CONDUCTOR ONLY.
4. CRANKCASE HEATER & CRANKCASE HEATER SWITCH ARE FACTORY INSTALLED OPTION.
5. 40VA MINIMUM TRANSFORMER IS REQUIRED.
6. COMMON SIDE OF TRANSFORMER MUST BE GROUNDED.

WARNING

High Voltage: Disconnect all power before servicing or installing this unit. Multiple power sources may be present. Failure to do so may cause property damage, personal injury, or death.

Wiring is subject to change. Always refer to the wiring diagram on the unit for the most up-to-date wiring.



0140R00171 - D

ITEM #	DESCRIPTION	DZ14SN 018**	DZ14SN 024**	DZ14SN 030**	DZ14SN 036**	DZ14SN 038**	DZ14SN 042**	DZ14SN 048/049**	DZ14SN 060**
ABK-20	Anchor Bracket Kit *	X	X	X	X	X	X	X	X
ASC01	Anti-Short Cycle Kit	X	X	X	X	X	X	X	X
CSR-U-1	Hard-start Kit	X	X	X	X	X			
CSR-U-2	Hard-start Kit				X	X	X	X	X
CSR-U-3	Hard-start Kit							X	X
FSK01A1	Freeze Protection Kit	X	X	X	X	X	X	X	X
LAKT01A	Low-Ambient Kit	X	X	X	X	X	X	X	X
OT18-60A2	Outdoor Thermostat	X	X	X	X	X	X	X	X
OT/EHR18-60	Emergency Heat Relay Kit	X	X	X	X	X	X	X	X
TX2N4A ³	TXV Kit	X	X						
TX3N4 ³	TXV Kit			X	X	X			
TX5N4 ³	TXV Kit						X	X	X

* Contains 20 brackets; four brackets needed to anchor unit to pad

¹ Installed on indoor coil

² Required for heat pump applications where ambient temperatures fall below 0 °F with 50% or higher relative humidity.

³ Condensing units and heat pumps with reciprocating compressors require the use of start-assist components when used in conjunction with an indoor coil using a non-bleed thermal expansion valve refrigerant metering device. The TXV should always be sized based on the tonnage of the outdoor unit.

