



DZ18TC

COOLING CAPACITY: 34,600 - 56,500 BTU/H
HEATING CAPACITY: 34,800 - 56,500 BTU/H

**HIGH-EFFICIENCY,
COMFORTNET™-COMPATIBLE,
SPLIT SYSTEM HEAT PUMP
UP TO 18 SEER & 9.5 HSPF**



■ Contents

Nomenclature.....	2
Product Specifications.....	3
Expanded Cooling Data	4
Expanded Heating Data.....	16
AHRI Ratings	18
Dimensions	23
Wiring Diagram.....	24
Accessories	25

■ Standard Features

- Two-Stage Copeland® UltraTech scroll compressor
- High-density foam compressor sound blanket
- ComfortNet™ Communications System compatible
- Advanced Copeland CoreSense™ Technology
- Efficient, two-speed ECM condenser fan motor
- Simple low-voltage wiring to outdoor unit in communicating mode
- Diagnostic indicator lights and storage of six fault codes
- Color-coded terminal strip for non-communicating set-up
- High- and low-pressure switches
- Time-delay technology with short-cycle protection to ensure quiet, reliable defrost
- Factory-installed bi-flow liquid-line filter drier
- Factory-installed suction-line accumulator
- Factory-installed compressor crankcase heater
- Factory-installed high-capacity muffler
- Factory-installed coil and ambient temperature sensors
- AHRI Certified; ETL Listed

■ Cabinet Features

- Grille-style sound control top design
- Custom Nickel Gray powder-paint finish
- 500-hour salt-spray tested
- Wire fan discharge grille
- Steel louver coil guard
- Single panel access to controls with space provided for field-installed accessories
- Sweat connection service valves with easy access to gauge ports
- When properly anchored, meets the 2010 Florida Building Code unit integrity requirements for hurricane-type winds (Anchor bracket kits available.)






Proper sizing and installation of equipment is critical to achieve optimal performance. Split system air conditioners and heat pumps must be matched with appropriate coil components to meet ENERGY STAR® criteria. Ask your contractor for details or visit www.energystar.gov.



* Complete warranty details available from your local dealer or at www.daikincomfort.com. To receive the 12-Year Unit Replacement Limited Warranty and 12-Year Parts Limited Warranty, online registration must be completed within 60 days of installation. Additional requirements for annual maintenance are required for the Unit Replacement Limited Warranty. Online registration and some of the additional requirements are not required in California or Quebec.

	D	Z	18	T	C	036	3	*	*	
	1	2	3,4	5	6	7,8,9	10	11	12	
Brand	D - Daikin									Engineering *
										Major & Minor revisions
										* Not used for inventory purposes
Type	X - AC R-410A									Voltage
	Z - HP R-410A									1 - 208/230 V Single-Phase 60 Hz
SEER	14 - 14 SEER		18 - 18 SEER							Nominal Tonnage
	16 - 16 SEER		20 - 20 SEER					024 - 2 tons	048 - 4 tons	
								036 - 3 tons	060 - 5 tons	
Compressor	S - Single Stage		V - Variable Speed							Feature Set
	T - Two Stage							A - Base	D - Deluxe	
								C - ComfortNet 4-Wire Ready	N - Nominal	

	DZ18TC 0361A*	DZ18TC 0481A*	DZ18TC 0601A*
CAPACITIES AND RATINGS			
Nominal Cooling (BTU/h)	35,000	47,000	57,000
Nominal Heating (BTU/h)	35,000	47,000	57,000
Decibels	72	73	75
COMPRESSOR			
RLA	15.3	21.2	28.8
LRA	83	104	152.9
CONDENSER FAN MOTOR			
Horsepower	½	½	½
FLA	2.8	2.8	2.8
REFRIGERATION SYSTEM			
Refrigerant Line Size			
Liquid Line Size ("O.D.)	¾"	¾"	¾"
Suction Line Size ("O.D.)	7⁄8"	1½"	1½"
Refrigerant Connection Size			
Liquid Valve Size ("O.D.)	¾"	¾"	¾"
Suction Valve Size ("O.D.)	7⁄8"	1½"	1½"
Valve Connection Type	Sweat	Sweat	Sweat
Refrigerant Charge	188	278	278
Expansion Device	TXV	TXV	TXV
Superheat at Service Valve	7-9°F	7-9°F	7-9°F
Subcooling at Service Valve			
High Stage	8-10°F	8-10°F	8-10°F
Low Stage	5-7°F	5-7°F	5-7°F
ELECTRICAL DATA			
Volts-Phase (60 Hz)	208/230-1	208/230-1	208/230-1
Minimum Circuit Ampacity ²	21.9	29.3	38.8
Max. Overcurrent Protection ³	35	50	60
Min / Max Volts	197 / 253	197 / 253	197 / 253
Electrical Conduit Size	½" or ¾"	½" or ¾"	½" or ¾"
EQUIPMENT WEIGHT (LBS)			
	246	308	314
SHIP WEIGHT (LBS)			
	268	330	336
ENERGY STAR CERTIFIED [^]			
			

¹ Tested and rated in accordance with AHRI Standard 210/240

² Wire size should be determined in accordance with National Electrical Codes; extensive wire runs will require larger wire sizes

³ Must use time-delay fuses or HACR-type circuit breakers of the same size as noted.

NOTES

- Always check the rating plate for electrical data on the unit being installed.
- Installer will need to supply ¾" to 1½" adapters for suction line connections.
- Unit is charged with refrigerant for 15' of ¾" liquid line. System charge must be adjusted per Installation Instructions Final Charge Procedure.
- Installation of these units requires the specified TXV Kit to be installed on the indoor coil.
THE SPECIFIED TXV IS DETERMINED BY THE OUTDOOR UNIT, NOT THE INDOOR COIL.

[^] ENERGY STAR NOTES

- Proper sizing and installation of equipment is critical to achieve optimal performance. Split system air conditioners and heat pumps must be matched with appropriate coil components to meet ENERGY STAR® criteria. Ask your contractor for details or visit www.energystar.gov.
- The www.energystar.gov website provides up-to-date system combinations certified to meet ENERGY STAR requirements. See Page 18 for all ENERGY STAR-certified combinations as of this document's revision date.

EXPANDED COOLING DATA — DZ18TC0361A*/CA*F3743*6**+TXV/MBVC1600** (LOW STAGE)

IDB		OUTDOOR AMBIENT TEMPERATURE												ENTERING INDOOR WET BULB TEMPERATURE												
		65°F				75°F				85°F				95°F				105°F				115°F				
		59	63	67	71	59	63	67	71	59	63	67	71	59	63	67	71	59	63	67	71	59	63	67	71	
70	956	MBh	24.8	25.7	28.1	-	24.2	25.1	27.5	-	23.6	24.5	26.8	-	23.1	23.9	26.2	-	21.9	22.7	24.9	-	20.3	21.0	23.0	-
		S/T	0.77	0.64	0.44	-	0.79	0.66	0.46	-	0.81	0.68	0.47	-	0.84	0.70	0.49	-	0.87	0.73	0.50	-	0.88	0.73	0.51	-
		ΔT	18	16	12	-	18	16	12	-	18	16	12	-	19	16	12	-	18	16	12	-	17	15	11	-
		kW	1.34	1.37	1.42	-	1.45	1.48	1.54	-	1.55	1.58	1.64	-	1.63	1.67	1.73	-	1.71	1.75	1.81	-	1.77	1.81	1.88	-
		Amps	5.3	5.4	5.6	-	5.7	5.9	6.1	-	6.2	6.4	6.6	-	6.7	6.8	7.1	-	7.1	7.3	7.5	-	7.5	7.7	8.0	-
	850	Hi PR	209	225	237	-	234	252	266	-	267	287	303	-	304	327	345	-	342	368	388	-	377	406	429	-
		Lo PR	111	118	128	-	117	124	136	-	121	129	141	-	128	136	148	-	134	142	155	-	138	147	161	-
		MBh	24.1	24.9	27.3	-	23.5	24.4	26.7	-	22.9	23.8	26.1	-	22.4	23.2	25.4	-	21.3	22.0	24.1	-	19.7	20.4	22.4	-
		S/T	0.73	0.61	0.42	-	0.76	0.63	0.44	-	0.78	0.65	0.45	-	0.80	0.67	0.46	-	0.83	0.69	0.48	-	0.84	0.70	0.48	-
		ΔT	19	16	12	-	19	17	13	-	19	17	13	-	19	17	13	-	19	17	13	-	18	15	12	-
744	kW	1.33	1.36	1.40	-	1.44	1.47	1.52	-	1.54	1.57	1.63	-	1.62	1.66	1.72	-	1.69	1.73	1.79	-	1.76	1.80	1.86	-	
	Amps	5.3	5.4	5.6	-	5.7	5.8	6.0	-	6.2	6.3	6.5	-	6.6	6.8	7.0	-	7.0	7.2	7.5	-	7.5	7.6	7.9	-	
	Hi PR	207	223	235	-	232	250	264	-	264	284	300	-	301	324	342	-	338	364	384	-	374	402	425	-	
	Lo PR	110	117	127	-	116	123	134	-	120	128	140	-	126	134	147	-	132	141	154	-	137	146	159	-	
	MBh	22.2	23.0	25.2	-	21.7	22.5	24.6	-	21.2	21.9	24.0	-	20.7	21.4	23.5	-	19.6	20.3	22.3	-	18.2	18.8	20.6	-	
75	956	S/T	0.70	0.59	0.41	-	0.73	0.61	0.42	-	0.75	0.62	0.43	-	0.77	0.64	0.45	-	0.80	0.67	0.46	-	0.81	0.67	0.47	-
		ΔT	19	17	13	-	20	17	13	-	20	17	13	-	20	17	13	-	19	17	13	-	18	16	12	-
		kW	1.29	1.32	1.37	-	1.40	1.43	1.48	-	1.50	1.53	1.58	-	1.58	1.61	1.67	-	1.65	1.69	1.75	-	1.71	1.75	1.81	-
		Amps	5.1	5.2	5.4	-	5.5	5.7	5.9	-	6.0	6.2	6.4	-	6.4	6.6	6.8	-	6.8	7.0	7.2	-	7.2	7.4	7.7	-
		Hi PR	201	216	228	-	225	242	256	-	256	276	291	-	292	314	331	-	328	353	373	-	363	390	412	-
	850	Lo PR	106	113	123	-	112	119	130	-	117	124	135	-	123	130	142	-	128	137	149	-	133	141	154	-
		MBh	25.2	25.9	28.1	30.1	24.6	25.3	27.4	29.4	24.0	24.7	26.8	28.7	23.4	24.1	26.1	28.0	22.3	22.9	24.8	26.6	20.6	21.2	23.0	24.7
		S/T	0.87	0.78	0.59	0.38	0.90	0.81	0.61	0.39	0.92	0.83	0.63	0.40	0.95	0.85	0.65	0.42	0.99	0.89	0.67	0.43	1.00	0.89	0.68	0.44
		ΔT	21	19	16	11	21	20	16	11	21	20	16	11	22	20	16	11	21	20	16	11	20	18	15	10
		kW	1.35	1.38	1.43	1.48	1.46	1.50	1.55	1.60	1.56	1.60	1.65	1.71	1.65	1.69	1.75	1.81	1.72	1.76	1.83	1.89	1.79	1.83	1.89	1.96
744	Amps	5.4	5.5	5.7	5.9	5.8	5.9	6.1	6.4	6.3	6.5	6.7	6.9	6.7	6.9	7.1	7.4	7.2	7.3	7.6	7.9	7.6	7.8	8.0	8.4	
	Hi PR	211	227	240	250	237	255	269	281	269	290	306	319	307	330	349	364	345	371	392	409	381	410	433	452	
	Lo PR	112	119	130	138	118	126	137	146	123	131	143	152	129	137	150	159	135	144	157	167	140	149	162	173	
	MBh	24.5	25.2	27.3	29.3	23.9	24.6	26.6	28.6	23.3	24.0	26.0	27.9	22.8	23.4	25.4	27.2	21.6	22.3	24.1	25.9	20.0	20.6	22.3	24.0	
	S/T	0.83	0.74	0.56	0.36	0.86	0.77	0.58	0.37	0.88	0.79	0.60	0.38	0.91	0.81	0.62	0.40	0.94	0.85	0.64	0.41	0.95	0.85	0.64	0.41	
75	956	ΔT	22	20	17	11	22	20	17	12	22	20	17	12	22	20	17	12	22	20	17	12	21	19	16	11
		kW	1.34	1.37	1.42	1.47	1.45	1.48	1.54	1.59	1.55	1.59	1.64	1.70	1.64	1.67	1.73	1.79	1.71	1.75	1.81	1.87	1.77	1.81	1.88	1.95
		Amps	5.3	5.4	5.6	5.8	5.7	5.9	6.1	6.3	6.2	6.4	6.6	6.9	6.7	6.8	7.1	7.3	7.1	7.3	7.5	7.8	7.5	7.7	8.0	8.3
		Hi PR	209	225	237	248	234	252	266	278	267	287	303	316	304	327	345	360	342	368	388	405	378	406	429	447
		Lo PR	111	118	128	137	117	124	136	145	121	129	141	150	128	136	148	158	134	142	155	165	138	147	161	171
	850	MBh	22.6	23.3	25.2	27.0	22.1	22.7	24.6	26.4	21.5	22.2	24.0	25.8	21.0	21.6	23.4	25.1	20.0	20.5	22.2	23.9	18.5	19.0	20.6	22.1
		S/T	0.80	0.72	0.54	0.35	0.83	0.74	0.56	0.36	0.85	0.76	0.58	0.37	0.88	0.79	0.59	0.38	0.91	0.81	0.62	0.40	0.92	0.82	0.62	0.40
		ΔT	22	21	17	12	23	21	17	12	23	21	17	12	23	21	17	12	22	21	17	12	21	19	16	11
		kW	1.31	1.34	1.38	1.43	1.41	1.45	1.50	1.55	1.51	1.54	1.60	1.65	1.59	1.63	1.69	1.75	1.66	1.70	1.76	1.82	1.72	1.77	1.83	1.89
		Amps	5.2	5.3	5.5	5.7	5.6	5.7	5.9	6.1	6.1	6.2	6.4	6.7	6.5	6.6	6.9	7.1	6.9	7.1	7.3	7.6	7.3	7.5	7.7	8.0
744	Hi PR	203	218	230	240	227	245	258	270	259	278	294	307	295	317	335	349	331	357	377	393	366	394	416	434	
	Lo PR	107	114	125	133	113	121	132	140	118	125	137	146	124	132	144	153	130	138	151	160	134	143	156	166	

IDB: Entering Indoor Dry Bulb Temperature
 High and low pressures are measured at the liquid and suction service valves.
 Shaded area reflects ACCA (TVA) conditions
 kW = Total system power
 Amps = outdoor unit amps (compressor + fan)

EXPANDED COOLING DATA — DZ18TC0361A*/CA*F3743*6**+TXV/MBVC1600** (LOW STAGE)

IDB		OUTDOOR AMBIENT TEMPERATURE												ENTERING INDOOR WET BULB TEMPERATURE												
		65°F				75°F				85°F				95°F				105°F				115°F				
		59	63	67	71	59	63	67	71	59	63	67	71	59	63	67	71	59	63	67	71	59	63	67	71	
80	956	MBh	25.7	26.2	28.0	29.9	25.1	25.6	27.4	29.2	24.5	25.0	26.7	28.5	23.9	24.4	26.0	27.8	22.7	23.2	24.7	26.5	21.0	21.5	22.9	24.5
		S/T	0.95	0.90	0.73	0.54	1.00	0.93	0.75	0.56	1.00	0.95	0.77	0.58	1.00	1.00	0.80	0.60	1.00	1.00	0.83	0.62	1.00	1.00	0.84	0.63
	ΔT	24	23	20	16	24	23	20	16	24	23	20	16	23	23	20	16	22	22	20	16	20	21	18	15	
	kW	1.36	1.39	1.44	1.49	1.48	1.51	1.56	1.62	1.58	1.61	1.67	1.73	1.66	1.70	1.76	1.83	1.74	1.78	1.84	1.91	1.80	1.85	1.91	1.98	
	Amps	5.4	5.5	5.7	5.9	5.9	6.0	6.2	6.4	6.4	6.5	6.7	7.0	6.8	7.0	7.2	7.5	7.2	7.4	7.7	8.0	7.7	7.9	8.1	8.4	
	Hi PR	213	229	242	253	239	257	272	284	272	293	309	322	310	333	352	367	349	375	396	413	385	415	438	457	
	Lo PR	113	120	131	140	119	127	138	147	124	132	144	153	130	138	151	161	136	145	158	169	141	150	164	175	
	MBh	24.9	25.4	27.2	29.1	24.3	24.9	26.6	28.4	23.7	24.3	25.9	27.7	23.2	23.7	25.3	27.0	22.0	22.5	24.0	25.7	20.4	20.8	22.3	23.8	
	S/T	0.91	0.85	0.69	0.52	0.94	0.88	0.72	0.54	0.97	0.91	0.74	0.55	1.00	0.94	0.76	0.57	1.00	0.97	0.79	0.59	1.00	0.98	0.80	0.60	
	ΔT	25	23	20	16	25	24	21	17	25	24	21	17	25	24	21	17	24	24	21	16	22	22	19	15	
kW	1.35	1.38	1.43	1.48	1.46	1.50	1.55	1.60	1.56	1.60	1.65	1.71	1.65	1.69	1.75	1.81	1.72	1.76	1.83	1.89	1.79	1.83	1.89	1.96		
Amps	5.4	5.5	5.7	5.9	5.8	5.9	6.1	6.4	6.3	6.5	6.7	6.9	6.7	6.9	7.1	7.4	7.2	7.3	7.6	7.9	7.6	7.8	8.0	8.4		
Hi PR	211	227	240	250	237	255	269	281	269	290	306	319	307	330	349	364	345	371	392	409	381	410	433	452		
Lo PR	112	119	130	138	118	126	137	146	123	131	143	152	129	137	150	159	135	144	157	167	140	149	162	173		
MBh	23.0	23.5	25.1	26.8	22.5	22.9	24.5	26.2	21.9	22.4	23.9	25.6	21.4	21.8	23.3	25.0	20.3	20.8	22.2	23.7	18.8	19.2	20.5	22.0		
S/T	0.88	0.82	0.67	0.50	0.91	0.85	0.69	0.52	0.93	0.87	0.71	0.53	0.96	0.90	0.73	0.55	1.00	0.94	0.76	0.57	1.01	0.94	0.77	0.57		
ΔT	25	24	21	17	25	24	21	17	25	24	21	17	25	24	21	17	25	24	21	17	23	22	20	16		
kW	1.32	1.35	1.39	1.44	1.43	1.46	1.51	1.56	1.52	1.56	1.61	1.67	1.61	1.64	1.70	1.76	1.68	1.72	1.78	1.84	1.74	1.78	1.84	1.91		
Amps	5.2	5.3	5.5	5.7	5.6	5.8	6.0	6.2	6.1	6.3	6.5	6.7	6.5	6.7	6.9	7.2	7.0	7.1	7.4	7.7	7.4	7.6	7.8	8.1		
Hi PR	205	220	233	243	230	247	261	272	261	281	297	310	298	320	338	353	335	360	380	397	370	398	420	438		
Lo PR	108	115	126	134	115	122	133	142	119	127	138	147	125	133	145	155	131	139	152	162	136	144	157	168		
85	956	MBh	26.1	26.6	27.9	29.7	25.5	26.0	27.2	29.0	24.9	25.4	26.6	28.3	24.3	24.7	25.9	27.7	23.1	23.5	24.6	26.3	21.4	21.8	22.8	24.3
		S/T	1.00	0.97	0.87	0.71	1.00	1.00	0.90	0.73	1.00	1.00	0.93	0.75	1.00	1.00	0.96	0.78	1.00	1.00	0.99	0.80	1.00	1.00	1.00	0.81
	ΔT	25	25	23	20	25	25	24	20	24	24	24	20	23	24	24	21	22	23	23	20	21	21	22	19	
	kW	1.38	1.41	1.45	1.50	1.49	1.52	1.58	1.63	1.59	1.63	1.68	1.74	1.68	1.72	1.78	1.84	1.75	1.80	1.86	1.93	1.82	1.86	1.93	2.00	
	Amps	5.5	5.6	5.8	6.0	5.9	6.0	6.2	6.5	6.4	6.6	6.8	7.0	6.9	7.0	7.3	7.5	7.3	7.5	7.7	8.0	7.7	7.9	8.2	8.5	
	Hi PR	215	232	245	255	242	260	275	286	275	296	312	326	313	337	356	371	352	379	400	417	389	419	442	461	
	Lo PR	114	121	132	141	120	128	140	149	125	133	145	155	131	140	153	163	138	147	160	170	143	152	166	176	
	MBh	25.3	25.8	27.1	28.9	24.7	25.2	26.4	28.2	24.2	24.6	25.8	27.5	23.6	24.0	25.2	26.8	22.4	22.8	23.9	25.5	20.7	21.1	22.1	23.6	
	S/T	0.95	0.92	0.83	0.67	0.99	0.95	0.86	0.70	1.00	0.98	0.88	0.72	1.00	1.00	0.91	0.74	1.00	1.00	0.95	0.77	1.00	1.00	0.95	0.77	
	ΔT	26	26	24	21	26	26	25	21	26	26	25	21	25	26	25	21	24	25	24	21	22	23	23	20	
kW	1.36	1.39	1.44	1.49	1.48	1.51	1.56	1.62	1.58	1.61	1.67	1.73	1.66	1.70	1.76	1.83	1.74	1.78	1.84	1.91	1.80	1.85	1.91	1.98		
Amps	5.4	5.5	5.7	5.9	5.9	6.0	6.2	6.4	6.4	6.5	6.7	7.0	6.8	7.0	7.2	7.5	7.2	7.4	7.7	8.0	7.7	7.9	8.1	8.4		
Hi PR	213	229	242	253	239	257	272	284	272	293	309	322	310	333	352	367	349	375	396	413	385	415	438	457		
Lo PR	113	120	131	140	119	127	138	147	124	132	144	153	130	138	151	161	136	145	158	169	141	150	164	175		
MBh	23.4	23.8	25.0	26.6	22.8	23.3	24.4	26.0	22.3	22.7	23.8	25.4	21.8	22.2	23.2	24.8	20.7	21.1	22.1	23.5	19.1	19.5	20.4	21.8		
S/T	0.92	0.89	0.80	0.65	0.95	0.92	0.83	0.67	0.98	0.94	0.85	0.69	1.00	0.97	0.88	0.71	1.00	1.00	0.91	0.74	1.00	1.00	0.92	0.75		
ΔT	26.6	26	25	21	27	26	25	22	27	27	25	22	27	27	25	22	26	26	25	22	24	24	23	20		
kW	1.33	1.36	1.40	1.45	1.44	1.47	1.52	1.57	1.53	1.57	1.62	1.68	1.62	1.66	1.72	1.78	1.69	1.73	1.79	1.86	1.76	1.80	1.86	1.93		
Amps	5.3	5.4	5.6	5.8	5.7	5.8	6.0	6.2	6.2	6.3	6.5	6.8	6.6	6.8	7.0	7.3	7.0	7.2	7.4	7.7	7.5	7.6	7.9	8.2		
Hi PR	207	223	235	245	232	250	264	275	264	284	300	313	301	323	342	356	338	364	384	401	374	402	425	443		
Lo PR	109	116	127	135	116	123	134	143	120	128	140	149	126	134	147	156	132	141	154	164	137	146	159	169		

IDB: Entering Indoor Dry Bulb Temperature
 High and low pressures are measured at the liquid and suction service valves.
 Shaded area reflects AHRI (TVA) conditions
 kW = Total system power
 Amps = outdoor unit amps (compressor + fan)

IDB		OUTDOOR AMBIENT TEMPERATURE												ENTERING INDOOR WET BULB TEMPERATURE												
		65°F				75°F				85°F				95°F				105°F				115°F				
		59	63	67	71	59	63	67	71	59	63	67	71	59	63	67	71	59	63	67	71	59	63	67	71	
70	1406	MBh	34.5	35.8	39.2	-	33.7	34.9	38.3	-	32.9	34.1	37.4	-	32.1	33.3	36.5	-	30.5	31.6	34.6	-	28.3	29.3	32.1	-
		S/T	0.76	0.63	0.44	-	0.79	0.66	0.45	-	0.81	0.67	0.47	-	0.83	0.70	0.48	-	0.86	0.72	0.50	-	0.87	0.73	0.50	-
	ΔT	17	15	11	-	17	15	11	-	17	15	11	-	17	15	11	-	17	15	11	-	16	14	11	-	
	kW	2.10	2.14	2.21	-	2.26	2.31	2.39	-	2.41	2.47	2.55	-	2.54	2.60	2.69	-	2.65	2.71	2.81	-	2.75	2.81	2.91	-	
	Amps	7.8	8.0	8.2	-	8.4	8.6	8.9	-	9.2	9.4	9.7	-	9.8	10.1	10.4	-	10.5	10.7	11.1	-	11.1	11.4	11.8	-	
	Hi PR	219	235	249	-	245	264	279	-	279	300	317	-	318	342	361	-	358	385	406	-	395	425	449	-	
	Lo PR	107	114	124	-	113	120	131	-	117	125	136	-	123	131	143	-	129	137	150	-	134	142	155	-	
	MBh	33.5	34.7	38.1	-	32.7	33.9	37.2	-	32.0	33.1	36.3	-	31.2	32.3	35.4	-	29.6	30.7	33.6	-	27.4	28.4	31.2	-	
	S/T	0.72	0.60	0.42	-	0.75	0.63	0.43	-	0.77	0.64	0.44	-	0.79	0.66	0.46	-	0.82	0.69	0.48	-	0.83	0.69	0.48	-	
	ΔT	18	15	12	-	18	16	12	-	18	16	12	-	18	16	12	-	18	16	12	-	17	15	11	-	
kW	2.08	2.13	2.19	-	2.25	2.30	2.37	-	2.39	2.45	2.53	-	2.52	2.58	2.67	-	2.63	2.69	2.78	-	2.73	2.79	2.88	-		
Amps	7.7	7.9	8.1	-	8.3	8.5	8.8	-	9.1	9.3	9.6	-	9.7	10.0	10.3	-	10.4	10.6	11.0	-	11.0	11.3	11.7	-		
Hi PR	217	233	246	-	243	261	276	-	276	297	314	-	315	339	358	-	354	381	402	-	391	421	445	-		
Lo PR	106	113	123	-	112	119	130	-	116	124	135	-	122	130	142	-	128	136	149	-	132	141	154	-		
MBh	30.9	32.1	35.1	-	30.2	31.3	34.3	-	29.5	30.6	33.5	-	28.8	29.8	32.7	-	27.3	28.3	31.0	-	25.3	26.2	28.8	-		
S/T	0.70	0.58	0.40	-	0.72	0.60	0.42	-	0.74	0.62	0.43	-	0.77	0.64	0.44	-	0.79	0.66	0.46	-	0.80	0.67	0.46	-		
ΔT	18	16	12	-	18	16	12	-	18	16	12	-	19	16	12	-	18	16	12	-	17	15	11	-		
kW	2.03	2.07	2.14	-	2.19	2.24	2.31	-	2.33	2.38	2.46	-	2.46	2.51	2.60	-	2.56	2.62	2.71	-	2.66	2.72	2.81	-		
Amps	7.5	7.7	7.9	-	8.1	8.3	8.6	-	8.8	9.0	9.3	-	9.4	9.7	10.0	-	10.1	10.3	10.7	-	10.7	10.9	11.3	-		
Hi PR	210	226	239	-	236	254	268	-	268	288	305	-	305	329	347	-	343	370	390	-	379	408	431	-		
Lo PR	103	109	119	-	108	115	126	-	113	120	131	-	118	126	138	-	124	132	144	-	128	137	149	-		
75	1406	MBh	35.1	36.1	39.1	42.0	34.3	35.3	38.2	41.0	33.5	34.5	37.3	40.0	32.7	33.6	36.4	39.1	31.0	31.9	34.6	37.1	28.7	29.6	32.0	34.4
		S/T	0.86	0.77	0.58	0.38	0.89	0.80	0.60	0.39	0.92	0.82	0.62	0.40	0.95	0.85	0.64	0.41	0.98	0.88	0.66	0.43	0.99	0.89	0.67	0.43
	ΔT	20	18	15	10	20	18	15	10	20	18	15	10	20	19	15	11	20	18	15	10	19	17	14	10	
	kW	2.11	2.16	2.23	2.31	2.28	2.33	2.41	2.49	2.43	2.49	2.57	2.66	2.56	2.62	2.71	2.81	2.68	2.74	2.83	2.93	2.77	2.84	2.94	3.04	
	Amps	7.8	8.0	8.3	8.6	8.5	8.7	9.0	9.3	9.2	9.5	9.8	10.2	9.9	10.2	10.5	10.9	10.6	10.8	11.2	11.6	11.2	11.5	11.9	12.3	
	Hi PR	221	238	251	262	248	267	282	294	282	303	320	334	321	346	365	381	361	389	411	428	399	430	454	473	
	Lo PR	108	115	125	134	114	121	133	141	119	126	138	147	125	133	145	154	131	139	152	161	135	144	157	167	
	MBh	34.1	35.1	38.0	40.8	33.3	34.3	37.1	39.8	32.5	33.5	36.2	38.9	31.7	32.6	35.3	37.9	30.1	31.0	33.6	36.0	27.9	28.7	31.1	33.4	
	S/T	0.82	0.74	0.56	0.36	0.85	0.76	0.58	0.37	0.87	0.78	0.59	0.38	0.90	0.81	0.61	0.39	0.94	0.84	0.63	0.41	0.94	0.84	0.64	0.41	
	ΔT	21	19	16	11	21	19	16	11	21	19	16	11	21	19	16	11	21	19	16	11	19	18	15	10	
kW	2.10	2.14	2.21	2.29	2.26	2.32	2.39	2.47	2.41	2.47	2.55	2.64	2.54	2.60	2.69	2.78	2.65	2.72	2.81	2.91	2.75	2.81	2.91	3.01		
Amps	7.8	8.0	8.2	8.5	8.4	8.6	8.9	9.3	9.2	9.4	9.7	10.1	9.8	10.1	10.4	10.8	10.5	10.7	11.1	11.5	11.1	11.4	11.8	12.2		
Hi PR	219	235	249	259	245	264	279	291	279	300	317	331	318	342	361	377	358	385	406	424	395	425	449	468		
Lo PR	107	114	124	132	113	120	131	140	117	125	136	145	123	131	143	153	129	138	150	160	134	142	155	165		
MBh	31.5	32.4	35.1	37.6	30.7	31.6	34.2	36.8	30.0	30.9	33.4	35.9	29.3	30.1	32.6	35.0	27.8	28.6	31.0	33.3	25.8	26.5	28.7	30.8		
S/T	0.79	0.71	0.54	0.35	0.82	0.74	0.56	0.36	0.84	0.75	0.57	0.37	0.87	0.78	0.59	0.38	0.90	0.81	0.61	0.39	0.91	0.81	0.62	0.40		
ΔT	21	19	16	11	21	20	16	11	21	20	16	11	21	20	16	11	21	19	16	11	20	18	15	10		
kW	2.04	2.09	2.16	2.23	2.21	2.26	2.33	2.41	2.35	2.40	2.48	2.57	2.48	2.53	2.62	2.71	2.59	2.64	2.73	2.83	2.68	2.74	2.83	2.93		
Amps	7.5	7.7	8.0	8.3	8.2	8.4	8.7	9.0	8.9	9.1	9.4	9.8	9.5	9.8	10.1	10.5	10.2	10.4	10.8	11.2	10.8	11.1	11.4	11.9		
Hi PR	212	228	241	251	238	256	271	282	271	291	308	321	308	332	350	366	347	373	394	411	383	413	436	454		
Lo PR	104	110	120	128	110	117	127	136	114	121	132	141	120	127	139	148	125	133	146	155	130	138	151	160		

IDB: Entering Indoor Dry Bulb Temperature
 High and low pressures are measured at the liquid and suction service valves.
 Shaded area reflects ACCA (TVA) conditions
 kW = Total system power
 Amps = outdoor unit amps (compressor + fan)

EXPANDED COOLING DATA — DZ18TC0481A*/CA*F3743*6**+TXV/MBVC2000** (LOW STAGE)

IDB		OUTDOOR AMBIENT TEMPERATURE												ENTERING INDOOR WET BULB TEMPERATURE													
		65°F				75°F				85°F				95°F				105°F				115°F					
		59	63	67	71	59	63	67	71	59	63	67	71	59	63	67	71	59	63	67	71	59	63	67	71		
70	1350	MBh	35.0	36.3	39.8	-	34.2	35.5	38.9	-	33.4	34.6	37.9	-	32.6	33.8	37.0	-	31.0	32.1	35.2	-	28.7	29.7	32.6	-	
		S/T	0.76	0.63	0.44	-	0.78	0.65	0.45	-	0.80	0.67	0.46	-	0.83	0.69	0.48	-	0.86	0.72	0.50	-	0.87	0.72	0.50	-	
		ΔT	18	16	12	-	18	16	12	-	18	16	12	-	18	16	12	-	18	16	12	-	17	15	11	-	
		kW	1.85	1.89	1.96	-	2.01	2.05	2.13	-	2.14	2.20	2.27	-	2.27	2.32	2.40	-	2.37	2.43	2.51	-	2.46	2.52	2.61	-	
		Amps	0.1	0.1	0.1	-	0.1	0.1	0.1	-	0.1	0.1	0.1	-	0.1	0.1	0.1	-	0.1	0.1	0.1	-	0.1	0.1	0.1	-	
		Hi PR	209	225	237	-	234	252	266	-	266	287	303	-	303	326	345	-	341	367	388	-	377	406	429	-	
		Lo PR	110	117	128	-	116	123	135	-	121	128	140	-	127	135	147	-	133	141	154	-	137	146	160	-	
		1200	MBh	34.0	35.3	38.6	-	33.2	34.4	37.7	-	32.4	33.6	36.8	-	31.6	32.8	35.9	-	30.1	31.2	34.1	-	27.8	28.9	31.6	-
		S/T	0.72	0.60	0.42	-	0.75	0.62	0.43	-	0.77	0.64	0.44	-	0.79	0.66	0.46	-	0.82	0.69	0.47	-	0.83	0.69	0.48	-	
		ΔT	19	16	12	-	19	16	12	-	19	16	13	-	19	17	13	-	19	16	12	-	18	15	12	-	
	kW	1.84	1.88	1.94	-	1.99	2.04	2.11	-	2.13	2.18	2.25	-	2.25	2.30	2.38	-	2.35	2.40	2.49	-	2.44	2.49	2.58	-		
	Amps	0.1	0.1	0.1	-	0.1	0.1	0.1	-	0.1	0.1	0.1	-	0.1	0.1	0.1	-	0.1	0.1	0.1	-	0.1	0.1	0.1	-		
	Hi PR	207	222	235	-	232	250	264	-	264	284	300	-	300	323	341	-	338	364	384	-	373	402	424	-		
	Lo PR	109	116	126	-	115	122	133	-	119	127	139	-	125	133	146	-	131	140	153	-	136	145	158	-		
	1050	MBh	31.4	32.5	35.7	-	30.7	31.8	34.8	-	29.9	31.0	34.0	-	29.2	30.3	33.2	-	27.7	28.8	31.5	-	25.7	26.6	29.2	-	
	S/T	0.70	0.58	0.40	-	0.72	0.60	0.42	-	0.74	0.62	0.43	-	0.76	0.64	0.44	-	0.79	0.66	0.46	-	0.80	0.67	0.46	-		
	ΔT	19	17	13	-	19	17	13	-	19	17	13	-	19	17	13	-	19	17	13	-	18	16	12	-		
	kW	1.79	1.83	1.89	-	1.94	1.98	2.05	-	2.07	2.12	2.19	-	2.19	2.24	2.32	-	2.28	2.34	2.42	-	2.37	2.43	2.51	-		
	Amps	0.1	0.1	0.1	-	0.1	0.1	0.1	-	0.1	0.1	0.1	-	0.1	0.1	0.1	-	0.1	0.1	0.1	-	0.1	0.1	0.1	-		
	Hi PR	200	216	228	-	225	242	256	-	256	275	291	-	291	314	331	-	328	353	372	-	362	390	412	-		
	Lo PR	106	112	123	-	111	119	129	-	116	123	135	-	122	129	141	-	128	136	148	-	132	140	153	-		

75	1350	MBh	35.6	36.7	39.7	42.6	34.8	35.8	38.8	41.6	34.0	35.0	37.9	40.6	33.1	34.1	36.9	39.6	31.5	32.4	35.1	37.7	29.2	30.0	32.5	34.9	
		S/T	0.86	0.77	0.58	0.37	0.89	0.80	0.60	0.39	0.91	0.82	0.62	0.40	0.94	0.84	0.64	0.41	0.98	0.87	0.66	0.43	0.99	0.88	0.67	0.43	
		ΔT	21	19	16	11	21	19	16	11	21	19	16	11	21	20	16	11	21	19	16	11	20	18	15	10	
		kW	1.87	1.91	1.98	2.05	2.03	2.07	2.14	2.22	2.16	2.22	2.29	2.37	2.29	2.34	2.42	2.51	2.39	2.45	2.53	2.63	2.48	2.54	2.63	2.73	
		Amps	0.1	0.1	0.1	0.1	0.1	0.1	0.1	0.1	0.1	0.1	0.1	0.1	0.1	0.1	0.1	0.1	0.1	0.1	0.1	0.1	0.1	0.1	0.1	0.1	
		Hi PR	211	227	240	250	237	255	269	280	269	290	306	319	306	330	348	363	345	371	392	409	381	410	433	452	
		Lo PR	111	118	129	137	117	125	136	145	122	130	142	151	128	136	149	158	134	143	156	166	139	148	161	172	
		1200	MBh	34.6	35.6	38.5	41.4	33.8	34.8	37.7	40.4	33.0	34.0	36.8	39.4	32.2	33.1	35.9	38.5	30.6	31.5	34.1	36.6	28.3	29.2	31.6	33.9
		S/T	0.82	0.73	0.55	0.36	0.85	0.76	0.57	0.37	0.87	0.78	0.59	0.38	0.90	0.80	0.61	0.39	0.93	0.83	0.63	0.41	0.94	0.84	0.64	0.41	
		ΔT	22	20	16	11	22	20	17	11	22	20	17	11	22	20	17	12	22	20	16	11	20	19	15	11	
	kW	1.85	1.89	1.96	2.03	2.01	2.05	2.13	2.20	2.15	2.20	2.27	2.35	2.27	2.32	2.40	2.49	2.37	2.43	2.51	2.60	2.46	2.52	2.61	2.70		
	Amps	0.1	0.1	0.1	0.1	0.1	0.1	0.1	0.1	0.1	0.1	0.1	0.1	0.1	0.1	0.1	0.1	0.1	0.1	0.1	0.1	0.1	0.1	0.1	0.1		
	Hi PR	209	225	237	247	234	252	266	278	266	287	303	316	303	327	345	360	341	367	388	405	377	406	429	447		
	Lo PR	110	117	128	136	116	124	135	144	121	128	140	149	127	135	147	157	133	141	154	164	137	146	160	170		
	1050	MBh	31.9	32.9	35.6	38.2	31.2	32.1	34.8	37.3	30.4	31.3	33.9	36.4	29.7	30.6	33.1	35.5	28.2	29.0	31.4	33.7	26.1	26.9	29.1	31.3	
	S/T	0.79	0.71	0.53	0.34	0.82	0.73	0.55	0.36	0.84	0.75	0.57	0.37	0.87	0.78	0.59	0.38	0.90	0.80	0.61	0.39	0.91	0.81	0.61	0.40		
	ΔT	22	20	17	12	22	21	17	12	22	21	17	12	22	21	17	12	22	20	17	12	21	19	16	11		
	kW	1.80	1.85	1.91	1.98	1.95	2.00	2.07	2.14	2.09	2.14	2.21	2.29	2.21	2.26	2.34	2.42	2.31	2.36	2.44	2.53	2.39	2.45	2.54	2.63		
	Amps	0.1	0.1	0.1	0.1	0.1	0.1	0.1	0.1	0.1	0.1	0.1	0.1	0.1	0.1	0.1	0.1	0.1	0.1	0.1	0.1	0.1	0.1	0.1	0.1		
	Hi PR	203	218	230	240	227	245	258	269	258	278	294	306	294	317	334	349	331	356	376	392	366	394	416	434		
	Lo PR	107	113	124	132	113	120	131	139	117	125	136	145	123	131	143	152	129	137	150	159	133	142	155	165		

IDB: Entering Indoor Dry Bulb Temperature
High and low pressures are measured at the liquid and suction service valves.

Shaded area reflects ACCA (TVA) conditions

kW = Total system power
Amps = outdoor unit amps (compressor + fan)

EXPANDED COOLING DATA — DZ18TC0481A*/CA*F3743*6**+TXV/MBVC2000** (LOW STAGE)

IDB	AIRFLOW	OUTDOOR AMBIENT TEMPERATURE																																									
		65°F							75°F							85°F							95°F							105°F							115°F						
		59	63	67	71	75	79	83	59	63	67	71	75	79	83	59	63	67	71	75	79	83	59	63	67	71	75	79	83	59	63	67	71	75	79	83	59	63	67	71	75	79	83
80	1350	MBh	36.3	37.1	39.6	42.3	45.4	35.4	36.2	38.7	41.3	44.3	34.6	35.3	37.7	40.3	43.2	33.7	34.5	36.8	39.4	42.0	32.0	32.7	35.0	37.4	39.7	30.3	32.4	34.6													
		S/T	0.94	0.88	0.72	0.54	1.00	0.92	0.75	0.56	1.00	0.94	0.76	0.57	1.00	0.97	0.79	0.59	1.00	1.00	0.82	0.61	1.00	1.00	0.82	0.61	1.00	1.00	0.83	0.62													
		ΔT	23	22	19	15	24	23	20	16	24	23	20	16	24	23	20	16	23	23	20	16	22	22	22	20	16	20	21	18	15												
	1200	KW	1.88	1.93	1.99	2.06	2.04	2.09	2.16	2.24	2.18	2.24	2.31	2.40	2.18	2.24	2.31	2.40	2.31	2.36	2.45	2.53	2.41	2.47	2.56	2.65	2.50	2.56	2.65	2.75													
		Amps	0.1	0.1	0.1	0.1	0.1	0.1	0.1	0.1	0.1	0.1	0.1	0.1	0.1	0.1	0.1	0.1	0.1	0.1	0.1	0.1	0.1	0.1	0.1	0.1	0.1	0.1	0.1	0.1													
		Hi PR	213	229	242	252	239	257	272	283	272	292	309	322	272	292	309	322	310	333	352	367	348	375	396	413	385	414	437	456													
	1050	Lo PR	112	119	130	139	118	126	138	147	118	126	138	147	123	131	143	152	129	138	150	160	136	144	157	168	140	149	163	173													
		MBh	35.2	36.0	38.4	41.1	34.4	35.1	37.5	40.1	33.6	34.3	36.6	39.2	33.6	34.3	36.6	39.2	32.7	33.5	35.8	38.2	31.1	31.8	34.0	36.3	28.8	29.4	31.5	33.6													
		S/T	0.90	0.84	0.69	0.51	0.93	0.87	0.71	0.53	0.96	0.90	0.73	0.54	0.92	0.86	0.70	0.53	0.95	0.89	0.73	0.54	1.00	0.96	0.78	0.58	1.00	0.97	0.79	0.59													
85	1350	ΔT	24	23	20	16	25	24	20	16	25	24	20	16	25	24	20	16	25	24	21	17	25	24	21	17	23	22	19	15													
		KW	1.90	1.94	2.01	2.08	2.06	2.11	2.18	2.26	2.20	2.26	2.33	2.42	2.18	2.24	2.31	2.40	2.33	2.38	2.47	2.56	2.43	2.49	2.58	2.67	2.53	2.59	2.68	2.78													
		Amps	0.1	0.1	0.1	0.1	0.1	0.1	0.1	0.1	0.1	0.1	0.1	0.1	0.1	0.1	0.1	0.1	0.1	0.1	0.1	0.1	0.1	0.1	0.1	0.1	0.1	0.1	0.1	0.1													
	1200	Hi PR	215	231	244	255	241	260	274	286	241	260	274	286	275	295	312	325	313	336	355	371	352	379	400	417	389	418	442	461													
		Lo PR	113	120	132	140	120	127	139	148	124	132	144	154	124	132	144	154	131	139	152	162	137	146	159	169	142	151	164	175													
		MBh	35.8	36.5	38.2	40.8	35.0	35.7	37.4	39.8	34.2	34.8	36.5	38.9	34.2	34.8	36.5	38.9	33.3	34.0	35.6	38.0	31.7	32.3	33.8	36.1	29.3	29.9	31.3	33.4													
	1050	S/T	0.94	0.91	0.82	0.67	0.98	0.94	0.85	0.69	1.00	0.97	0.87	0.71	1.00	0.97	0.87	0.71	1.00	1.00	0.90	0.73	1.00	1.00	0.93	0.76	1.00	1.00	0.94	0.76													
		ΔT	26	25	24	21	26	26	24	21	26	26	24	21	26	26	24	21	26	26	25	21	24	25	24	21	22	23	20	20													
		KW	1.88	1.93	1.99	2.06	2.04	2.09	2.16	2.24	2.18	2.24	2.31	2.40	2.18	2.24	2.31	2.40	2.31	2.36	2.45	2.53	2.41	2.47	2.56	2.65	2.50	2.56	2.65	2.75													
80	1350	Amps	0.1	0.1	0.1	0.1	0.1	0.1	0.1	0.1	0.1	0.1	0.1	0.1	0.1	0.1	0.1	0.1	0.1	0.1	0.1	0.1	0.1	0.1	0.1	0.1	0.1	0.1	0.1	0.1													
		Hi PR	213	229	242	252	239	257	272	283	272	292	309	322	272	292	309	322	310	333	352	367	348	375	396	413	385	414	437	456													
		Lo PR	112	119	130	139	118	126	138	147	118	126	138	147	123	131	143	152	129	138	150	160	136	144	157	168	140	149	163	173													
	1200	MBh	33.1	33.7	35.8	38.2	34.8	35.1	37.5	40.1	33.6	34.3	36.6	39.2	33.6	34.3	36.6	39.2	32.7	33.5	35.8	38.2	31.1	31.8	34.0	36.3	28.8	29.4	31.5	33.6													
		S/T	0.90	0.84	0.69	0.51	0.93	0.87	0.71	0.53	0.96	0.90	0.73	0.54	0.92	0.86	0.70	0.53	0.95	0.89	0.73	0.54	1.00	0.96	0.78	0.58	1.00	0.97	0.79	0.59													
		ΔT	24	23	20	16	25	24	20	16	25	24	20	16	25	24	20	16	25	24	21	17	25	24	21	17	23	22	19	15													
	1050	KW	1.82	1.86	1.93	1.99	1.97	2.02	2.09	2.16	2.11	2.16	2.23	2.31	2.11	2.16	2.23	2.31	2.23	2.28	2.36	2.44	2.33	2.38	2.47	2.56	2.41	2.47	2.56	2.65													
		Amps	0.1	0.1	0.1	0.1	0.1	0.1	0.1	0.1	0.1	0.1	0.1	0.1	0.1	0.1	0.1	0.1	0.1	0.1	0.1	0.1	0.1	0.1	0.1	0.1	0.1	0.1	0.1	0.1													
		Hi PR	205	220	232	242	230	247	261	272	230	247	261	272	261	281	297	309	297	320	338	352	334	360	380	396	370	398	420	438													
Lo PR	108	115	125	133	114	121	132	141	118	126	137	146	118	126	137	146	124	132	144	154	130	138	151	161	135	143	156	167															

Shaded area reflects AHR/ (TVA) conditions
 kW = Total system power
 Amps = outdoor unit amps (compressor + fan)

IDB: Entering Indoor Dry Bulb Temperature
 High and low pressures are measured at the liquid and suction service valves.

IDB: Entering Indoor Dry Bulb Temperature
 High and low pressures are measured at the liquid and suction service valves.

EXPANDED COOLING DATA — DZ18TC0481A*/CA*F3743*6**+TXV/MBVC2000** (HIGH STAGE)

IDB		OUTDOOR AMBIENT TEMPERATURE												ENTERING INDOOR WET BULB TEMPERATURE											
		65°F				75°F				85°F				95°F				105°F				115°F			
		59	63	67	71	59	63	67	71	59	63	67	71	59	63	67	71	59	63	67	71	59	63	67	71
70	1969	MBh	49.0	50.8	55.6	59.6	54.3	47.9	49.6	54.3	53.1	46.7	48.4	53.1	45.6	47.2	51.8	43.3	44.9	49.2	40.1	41.6	45.5	-	
		S/T	0.75	0.63	0.44	0.45	0.78	0.65	0.45	0.80	0.67	0.46	0.80	0.67	0.46	0.83	0.69	0.48	0.86	0.72	0.50	0.87	0.72	0.50	-
		ΔT	17	15	11	11	17	15	11	17	15	11	17	15	11	18	15	12	17	15	11	16	14	11	-
		kW	2.88	2.94	3.04	3.28	3.10	3.17	3.28	3.31	3.38	3.49	3.31	3.38	3.49	3.48	3.56	3.68	3.63	3.72	3.84	3.76	3.85	3.98	-
		Amps	10.3	10.6	10.9	11.8	11.2	11.5	11.8	12.2	12.5	12.9	12.2	12.5	12.9	13.1	13.4	13.9	13.9	14.3	14.8	14.8	15.2	15.7	-
		Hi PR	214	231	244	273	241	259	273	274	295	311	274	295	311	312	335	354	351	377	399	387	417	440	-
		Lo PR	106	113	123	130	112	119	130	116	124	135	116	124	135	122	130	142	128	136	149	132	141	154	-
		MBh	47.6	49.3	54.0	52.8	46.5	48.2	52.8	45.4	47.0	51.5	45.4	47.0	51.5	44.3	45.9	50.3	42.0	43.6	47.7	38.9	40.4	44.2	-
		S/T	0.72	0.60	0.42	0.43	0.75	0.62	0.43	0.76	0.64	0.44	0.76	0.64	0.44	0.79	0.66	0.46	0.82	0.68	0.47	0.83	0.69	0.48	-
		ΔT	18	16	12	12	18	16	12	18	16	12	18	16	12	18	16	12	18	16	12	17	15	11	-
	kW	2.85	2.92	3.01	3.25	3.08	3.15	3.25	3.28	3.35	3.46	3.28	3.35	3.46	3.45	3.53	3.65	3.60	3.68	3.81	3.73	3.82	3.95	-	
	Amps	10.2	10.5	10.8	11.7	11.1	11.3	11.7	12.1	12.4	12.8	12.1	12.4	12.8	12.9	13.3	13.7	13.8	14.1	14.6	14.7	15.0	15.6	-	
	Hi PR	212	229	241	271	238	256	271	271	292	308	271	292	308	309	332	351	347	374	395	384	413	436	-	
	Lo PR	105	112	122	129	111	118	129	115	123	134	115	123	134	121	129	141	127	135	147	131	140	152	-	
	MBh	43.9	45.5	49.9	48.7	42.9	44.4	48.7	41.9	43.4	47.5	41.9	43.4	47.5	40.8	42.3	46.4	38.8	40.2	44.1	35.9	37.3	40.8	-	
	S/T	0.69	0.58	0.40	0.42	0.72	0.60	0.42	0.74	0.62	0.43	0.74	0.62	0.43	0.76	0.64	0.44	0.79	0.66	0.46	0.80	0.66	0.46	-	
	ΔT	18	16	12	12	19	16	12	19	16	12	19	16	12	19	16	12	18	16	12	17	15	11	-	
	kW	2.78	2.84	2.94	3.17	3.00	3.07	3.17	3.20	3.27	3.37	3.20	3.27	3.37	3.37	3.44	3.56	3.51	3.59	3.71	3.64	3.72	3.84	-	
	Amps	9.9	10.2	10.5	11.4	10.7	11.0	11.4	11.7	12.0	12.4	11.7	12.0	12.4	12.6	12.9	13.3	13.4	13.7	14.2	14.2	14.6	15.1	-	
	Hi PR	206	222	234	263	231	249	263	263	283	299	263	283	299	299	322	340	337	362	383	372	400	423	-	
	Lo PR	102	108	118	125	108	114	125	112	119	130	112	119	130	117	125	136	123	131	143	127	135	148	-	

75	1969	MBh	49.8	51.3	55.5	59.6	48.7	50.1	54.2	58.2	47.5	48.9	52.9	56.8	46.4	47.7	51.7	55.4	44.0	45.3	49.1	52.7	40.8	42.0	45.5	48.8
		S/T	0.86	0.77	0.58	0.37	0.89	0.79	0.60	0.39	0.91	0.81	0.62	0.40	0.94	0.84	0.64	0.41	0.98	0.87	0.66	0.42	0.98	0.88	0.67	0.43
		ΔT	20	18	15	10	20	19	15	11	20	19	15	11	20	19	15	11	20	18	15	10	19	17	14	10
		kW	2.90	2.96	3.06	3.16	3.13	3.20	3.31	3.42	3.33	3.41	3.52	3.64	3.51	3.59	3.71	3.84	3.67	3.75	3.88	4.01	3.80	3.88	4.02	4.16
		Amps	10.4	10.7	11.0	11.4	11.3	11.6	12.0	12.4	12.3	12.6	13.0	13.6	13.2	13.5	14.0	14.5	14.1	14.4	14.9	15.5	14.9	15.3	15.9	16.5
		Hi PR	217	233	246	257	243	262	276	288	277	298	314	328	315	339	358	373	354	381	403	420	391	421	445	464
		Lo PR	107	114	124	132	113	120	131	140	118	125	137	145	123	131	143	153	129	138	150	160	134	142	155	166
		MBh	48.4	49.8	53.9	57.9	47.3	48.6	52.7	56.5	46.1	47.5	51.4	55.2	45.0	46.3	50.2	53.8	42.8	44.0	47.6	51.1	39.6	40.8	44.1	47.4
		S/T	0.82	0.73	0.55	0.36	0.85	0.76	0.57	0.37	0.87	0.78	0.59	0.38	0.90	0.80	0.61	0.39	0.93	0.83	0.63	0.41	0.94	0.84	0.64	0.41
		ΔT	21	19	16	11	21	19	16	11	21	19	16	11	21	19	16	11	21	19	16	11	20	18	15	10
	kW	2.88	2.94	3.04	3.14	3.11	3.17	3.28	3.39	3.31	3.38	3.49	3.61	3.48	3.56	3.68	3.81	3.63	3.72	3.84	3.98	3.76	3.85	3.98	4.12	
	Amps	10.3	10.6	10.9	11.3	11.2	11.5	11.8	12.3	12.2	12.5	12.9	13.4	13.1	13.4	13.9	14.4	13.9	14.3	14.8	15.4	14.8	15.2	15.7	16.3	
	Hi PR	215	231	244	254	241	259	274	285	274	295	311	324	312	336	354	370	351	377	399	416	388	417	440	459	
	Lo PR	106	113	123	131	112	119	130	138	116	124	135	144	122	130	142	151	128	136	149	158	133	141	154	164	
	MBh	44.7	46.0	49.8	53.4	43.6	44.9	48.6	52.2	42.6	43.8	47.4	50.9	41.5	42.8	46.3	49.7	39.5	40.6	44.0	47.2	36.6	37.6	40.7	43.7	
	S/T	0.79	0.70	0.53	0.34	0.82	0.73	0.55	0.36	0.84	0.75	0.57	0.36	0.86	0.77	0.59	0.38	0.90	0.80	0.61	0.39	0.90	0.81	0.61	0.39	
	ΔT	21	19	16	11	21	20	16	11	21	20	16	11	22	20	16	11	21	20	16	11	20	18	15	10	
	kW	2.81	2.87	2.96	3.06	3.03	3.09	3.20	3.30	3.22	3.29	3.40	3.52	3.39	3.47	3.59	3.71	3.54	3.62	3.74	3.87	3.67	3.75	3.88	4.01	
	Amps	10.0	10.3	10.6	11.0	10.9	11.1	11.5	12.0	11.8	12.1	12.6	13.0	12.7	13.0	13.5	14.0	13.5	13.9	14.4	14.9	14.4	14.7	15.2	15.9	
	Hi PR	208	224	236	247	233	251	265	277	266	286	302	315	302	325	344	358	340	366	387	403	376	405	427	446	
	Lo PR	103	109	119	127	109	116	126	134	113	120	131	140	119	126	138	147	124	132	144	154	129	137	149	159	

kW = Total system power
Amps = outdoor unit amps (compressor + fan)

Shaded area reflects ACCA (TVA) conditions

IDB: Entering Indoor Dry Bulb Temperature
High and low pressures are measured at the liquid and suction service valves.

EXPANDED COOLING DATA — DZ18TC0481A*/CA*F3743*6**+TXV/MBVC2000** (HIGH STAGE)

IDB		OUTDOOR AMBIENT TEMPERATURE												ENTERING INDOOR WET BULB TEMPERATURE												
		65°F				75°F				85°F				95°F				105°F				115°F				
		59	63	67	71	59	63	67	71	59	63	67	71	59	63	67	71	59	63	67	71	59	63	67	71	
80	1969	MBh	50.7	51.8	55.4	59.2	49.5	50.6	54.1	57.8	48.4	49.4	52.8	56.4	47.2	48.2	51.5	55.1	44.8	45.8	48.9	52.3	41.5	42.4	45.3	48.4
		S/T	0.94	0.88	0.72	0.54	1.00	0.91	0.74	0.56	1.00	0.94	0.76	0.57	1.00	0.97	0.79	0.59	1.00	1.00	0.82	0.61	1.00	1.00	0.82	0.62
	ΔT	22	21	19	15	23	22	19	15	22	22	19	15	22	22	19	15	22	21	21	19	15	19	20	17	14
	kW	2.93	2.99	3.09	3.19	3.16	3.23	3.33	3.45	3.36	3.44	3.55	3.67	3.54	3.62	3.75	3.87	3.70	3.70	3.78	3.91	4.05	3.83	3.92	4.05	4.19
	Amps	10.5	10.8	11.1	11.6	11.4	11.7	12.1	12.5	12.4	12.7	13.2	13.7	13.3	13.6	14.1	14.7	14.2	14.2	14.6	15.1	15.7	15.1	15.5	16.0	16.6
	Hi PR	219	236	249	259	246	264	279	291	279	301	317	331	318	342	361	377	358	358	385	407	424	395	426	449	469
	Lo PR	108	115	126	134	114	122	133	141	119	126	138	147	125	133	145	154	131	139	152	162	162	135	144	157	167
	1750	MBh	49.2	50.3	53.8	57.5	48.1	49.1	52.5	56.1	46.9	48.0	51.3	54.8	45.8	46.8	50.0	53.5	43.5	44.5	47.5	50.8	40.3	41.2	44.0	47.0
		S/T	0.90	0.84	0.68	0.51	0.93	0.87	0.71	0.53	0.95	0.89	0.73	0.54	0.98	0.92	0.75	0.56	1.00	0.96	0.78	0.58	1.00	0.97	0.79	0.59
	ΔT	23	22	19	15	23	22	20	16	24	23	20	16	24	23	20	16	24	23	22	19	16	21	21	18	15
kW	2.90	2.96	3.06	3.16	3.13	3.20	3.31	3.42	3.33	3.41	3.52	3.64	3.51	3.59	3.71	3.84	3.67	3.67	3.75	3.88	4.01	3.80	3.88	4.02	4.16	
Amps	10.4	10.7	11.0	11.5	11.3	11.6	12.0	12.4	12.3	12.6	13.0	13.6	13.2	13.5	14.0	14.5	14.1	14.4	14.9	15.5	15.5	14.9	15.3	15.9	16.5	
Hi PR	217	233	246	257	243	262	276	288	277	298	314	328	315	339	358	373	354	354	381	403	420	391	421	445	464	
Lo PR	107	114	124	132	113	120	131	140	118	125	137	145	123	131	143	153	129	138	150	160	160	134	142	155	166	
1531	MBh	45.4	46.4	49.6	53.0	44.4	45.4	48.5	51.8	43.3	44.3	47.3	50.6	42.3	43.2	46.2	49.3	40.2	41.0	43.8	46.9	37.2	38.0	40.6	43.4	
	S/T	0.86	0.81	0.66	0.49	0.90	0.84	0.68	0.51	0.92	0.86	0.70	0.52	0.95	0.89	0.72	0.54	0.98	0.92	0.75	0.56	0.99	0.93	0.76	0.57	
ΔT	24	23	20	16	24	23	20	16	24	23	20	16	24	23	20	16	24	23	23	20	16	22	21	18	15	
kW	2.83	2.89	2.98	3.08	3.05	3.12	3.22	3.33	3.25	3.32	3.43	3.55	3.42	3.50	3.62	3.74	3.57	3.57	3.65	3.78	3.91	3.70	3.78	3.91	4.05	
Amps	10.1	10.4	10.7	11.1	11.0	11.2	11.6	12.1	11.9	12.3	12.7	13.2	12.8	13.1	13.6	14.1	13.7	14.0	14.5	15.1	15.1	14.5	14.9	15.4	16.0	
Hi PR	210	226	239	249	236	254	268	280	268	289	305	318	306	329	347	362	344	344	370	391	407	380	409	432	450	
Lo PR	104	110	121	128	110	117	127	136	114	121	132	141	120	127	139	148	126	134	146	155	155	130	138	151	161	
85	1969	MBh	51.6	52.6	55.1	58.8	50.4	51.4	53.8	57.4	49.2	50.2	52.5	56.0	48.0	48.9	51.2	54.7	45.6	46.5	48.7	51.9	42.2	43.1	45.1	48.1
		S/T	0.99	0.95	0.86	0.70	1.00	0.99	0.89	0.72	1.00	1.00	0.91	0.74	1.00	1.00	0.94	0.76	1.00	1.00	0.98	0.79	1.00	1.00	0.99	0.80
	ΔT	24	23	22	19	24	24	22	19	23	23	22	19	22	23	23	20	24	23	22	19	20	20	20	21	18
	kW	2.95	3.01	3.11	3.22	3.18	3.25	3.36	3.48	3.39	3.47	3.58	3.71	3.57	3.65	3.78	3.91	3.73	3.81	3.94	4.08	3.86	3.95	4.09	4.23	
	Amps	10.6	10.9	11.2	11.7	11.5	11.8	12.2	12.7	12.5	12.9	13.3	13.8	13.4	13.8	14.3	14.8	14.3	14.3	14.7	15.2	15.8	15.2	15.6	16.2	16.8
	Hi PR	221	238	251	262	248	267	282	294	282	304	321	334	321	346	365	381	361	361	389	411	428	399	430	454	473
	Lo PR	109	116	127	135	115	123	134	143	120	128	139	148	126	134	146	156	132	140	153	163	163	137	145	159	169
	1750	MBh	50.1	51.1	53.5	57.1	48.9	49.9	52.2	55.7	47.8	48.7	51.0	54.4	46.6	47.5	49.8	53.1	44.3	45.1	47.3	50.4	41.0	41.8	43.8	46.7
		S/T	0.94	0.91	0.82	0.66	0.97	0.94	0.85	0.69	1.00	0.96	0.87	0.71	1.00	0.99	0.90	0.73	1.00	1.00	0.93	0.76	1.00	1.00	0.94	0.76
	ΔT	25	24	23	20	25	25	23	20	25	25	23	20	24	25	23	20	24	23	24	23	20	22	22	22	19
kW	2.93	2.99	3.09	3.19	3.16	3.23	3.33	3.45	3.36	3.44	3.55	3.67	3.54	3.62	3.75	3.87	3.70	3.78	3.91	4.05	3.83	3.92	4.05	4.19		
Amps	10.5	10.8	11.1	11.6	11.4	11.7	12.1	12.5	12.4	12.7	13.2	13.7	13.3	13.6	14.1	14.7	14.2	14.6	15.1	15.7	15.1	15.5	16.0	16.6		
Hi PR	219	236	249	259	246	264	279	291	279	301	317	331	318	342	361	377	358	358	385	407	424	395	426	449	469	
Lo PR	108	115	126	134	114	122	133	141	119	126	138	147	125	133	145	154	131	139	152	162	162	135	144	157	167	
1531	MBh	46.2	47.1	49.4	52.7	45.2	46.0	48.2	51.4	44.1	44.9	47.1	50.2	43.0	43.8	45.9	49.0	40.9	41.7	43.6	46.5	37.9	38.6	40.4	43.1	
	S/T	0.91	0.87	0.79	0.64	0.94	0.91	0.82	0.66	0.96	0.93	0.84	0.68	0.99	0.96	0.87	0.70	1.00	1.00	0.90	0.73	1.00	1.00	0.91	0.74	
ΔT	25	25	23	20	25	25	24	21	26	25	24	21	26	25	24	21	25	25	24	20	20	23	23	22	19	
kW	2.85	2.92	3.01	3.11	3.08	3.15	3.25	3.36	3.28	3.35	3.46	3.58	3.45	3.53	3.65	3.77	3.60	3.68	3.81	3.94	3.73	3.82	3.95	4.08		
Amps	10.2	10.5	10.8	11.2	11.1	11.3	11.7	12.2	12.1	12.4	12.8	13.3	12.9	13.3	13.7	14.3	13.8	14.1	14.6	15.2	14.6	14.6	15.0	15.5	16.2	
Hi PR	212	228	241	252	238	256	271	282	271	292	308	321	309	332	351	366	347	347	374	394	411	384	413	436	455	
Lo PR	105	112	122	130	111	118	129	137	115	123	134	142	121	129	140	150	127	135	147	157	157	131	139	152	162	

IDB: Entering Indoor Dry Bulb Temperature
 High and low pressures are measured at the liquid and suction service valves.
 Shaded area reflects AHRI (TVA) conditions
 kW = Total system power
 Amps = outdoor unit amps (compressor + fan)

IDB		OUTDOOR AMBIENT TEMPERATURE												ENTERING INDOOR WET BULB TEMPERATURE											
		65°F				75°F				85°F				95°F				105°F				115°F			
		59	63	67	71	59	63	67	71	59	63	67	71	59	63	67	71	59	63	67	71	59	63	67	71
70	MBh	40.0	41.5	45.5	49.5	39.1	40.5	44.4	48.4	38.2	39.6	43.3	47.1	37.2	38.6	42.3	46.1	35.4	36.7	40.2	44.0	32.8	34.0	37.2	40.4
	S/T	0.73	0.61	0.42	0.27	0.76	0.63	0.44	0.29	0.78	0.65	0.45	0.30	0.80	0.67	0.47	0.31	0.83	0.70	0.48	0.32	0.84	0.70	0.49	0.33
	DT	20	17	13	9	20	18	13	9	20	18	13	9	20	18	13	9	20	17	13	9	19	16	12	8
	kW	2.22	2.27	2.35	2.44	2.41	2.46	2.55	2.64	2.57	2.63	2.72	2.81	2.71	2.77	2.87	2.96	2.83	2.90	3.00	3.09	2.93	3.00	3.11	3.19
	Amps	7.9	8.1	8.3	8.5	8.5	8.7	9.0	9.2	9.2	9.4	9.7	9.9	9.8	10.1	10.4	10.7	10.5	10.7	11.1	11.4	11.1	11.3	11.7	12.0
	Hi PR	206	222	234	244	231	249	263	274	263	283	299	312	300	322	340	355	337	363	383	400	372	401	423	441
	Lo PR	107	114	125	133	114	121	132	140	118	126	137	145	124	132	144	152	130	138	151	160	134	143	156	164
	MBh	38.9	40.3	44.1	47.9	38.0	39.3	43.1	46.9	37.1	38.4	42.1	45.9	36.2	37.5	41.1	44.9	34.3	35.6	39.0	42.8	31.8	33.0	36.1	39.3
	S/T	0.70	0.58	0.40	0.25	0.72	0.61	0.42	0.27	0.74	0.62	0.43	0.28	0.77	0.64	0.44	0.30	0.80	0.66	0.46	0.32	0.80	0.67	0.46	0.33
	DT	21	18	14	10	21	18	14	10	21	18	14	10	21	18	14	10	21	18	14	10	20	17	13	9
kW	2.21	2.26	2.33	2.41	2.39	2.44	2.52	2.60	2.55	2.60	2.69	2.77	2.69	2.75	2.84	2.92	2.81	2.87	2.97	3.05	2.91	2.98	3.08	3.16	
Amps	7.8	8.0	8.3	8.5	8.4	8.6	8.9	9.1	9.1	9.4	9.7	9.9	9.8	10.0	10.3	10.6	10.4	10.6	11.0	11.3	11.0	11.2	11.6	11.9	
Hi PR	204	220	232	242	229	246	260	270	260	280	296	306	297	319	337	351	334	359	379	393	369	397	419	433	
Lo PR	106	113	124	131	112	120	131	138	117	124	136	143	123	131	143	151	129	137	149	157	133	142	155	163	
MBh	35.9	37.2	40.7	44.5	35.0	36.3	39.8	43.6	34.2	35.5	38.8	42.6	33.4	34.6	37.9	41.7	31.7	32.9	36.0	39.8	29.4	30.4	33.3	36.3	
S/T	0.67	0.56	0.39	0.24	0.70	0.58	0.40	0.25	0.72	0.60	0.41	0.26	0.74	0.62	0.43	0.28	0.77	0.64	0.44	0.30	0.77	0.65	0.45	0.32	
DT	21	18	14	10	21	19	14	10	21	19	14	10	22	19	14	10	21	18	14	10	20	17	13	9	
kW	2.15	2.20	2.27	2.35	2.33	2.38	2.46	2.54	2.48	2.54	2.62	2.70	2.62	2.68	2.77	2.85	2.73	2.79	2.89	2.97	2.83	2.90	3.00	3.08	
Amps	7.6	7.8	8.0	8.2	8.2	8.4	8.7	8.9	8.9	9.1	9.4	9.6	9.5	9.7	10.0	10.3	10.1	10.3	10.7	11.0	10.7	10.9	11.3	11.6	
Hi PR	198	213	225	235	222	239	252	262	253	272	287	297	288	310	327	341	324	348	368	382	358	385	406	420	
Lo PR	103	110	120	127	109	116	127	134	113	121	132	139	119	127	138	145	125	133	145	152	129	137	150	157	

75	MBh	40.7	41.9	45.4	49.2	39.8	40.9	44.3	48.1	38.8	40.0	43.3	47.1	37.9	39.0	42.2	46.0	36.0	37.0	40.1	43.9	33.3	34.3	37.1	39.9
	S/T	0.83	0.75	0.56	0.36	0.86	0.77	0.58	0.38	0.89	0.79	0.60	0.39	0.91	0.82	0.62	0.40	0.95	0.85	0.64	0.41	0.96	0.86	0.65	0.42
	DT	23	21	17	12	23	22	18	12	23	22	18	12	24	22	18	12	23	21	18	12	22	20	16	11
	kW	2.24	2.29	2.37	2.45	2.43	2.48	2.57	2.66	2.59	2.65	2.74	2.84	2.73	2.80	2.89	3.00	2.85	2.92	3.02	3.13	2.96	3.03	3.14	3.25
	Amps	8.0	8.1	8.4	8.7	8.6	8.8	9.1	9.4	9.3	9.5	9.8	10.2	9.9	10.2	10.5	10.9	10.6	10.8	11.2	11.6	11.2	11.4	11.8	12.3
	Hi PR	208	224	237	247	234	251	266	277	266	286	302	315	303	326	344	359	340	366	387	404	376	405	427	446
	Lo PR	109	115	126	134	115	122	133	142	119	127	138	147	125	133	145	155	131	140	152	162	136	144	158	168
	MBh	39.5	40.7	44.0	47.3	38.6	39.7	43.0	46.2	37.7	38.8	42.0	45.1	36.8	37.9	41.0	44.0	34.9	36.0	38.9	41.8	32.4	33.3	36.1	38.7
	S/T	0.79	0.71	0.54	0.35	0.82	0.74	0.56	0.36	0.84	0.76	0.57	0.37	0.87	0.78	0.59	0.38	0.90	0.81	0.61	0.39	0.91	0.82	0.62	0.40
	DT	24	22	18	13	24	22	18	13	24	22	18	13	25	23	19	13	24	22	18	13	23	21	17	12
kW	2.23	2.28	2.35	2.43	2.41	2.46	2.55	2.63	2.57	2.63	2.72	2.81	2.71	2.77	2.87	2.97	2.83	2.90	3.00	3.10	2.93	3.00	3.11	3.22	
Amps	7.9	8.1	8.3	8.6	8.5	8.7	9.0	9.3	9.2	9.4	9.7	10.1	9.8	10.1	10.4	10.8	10.5	10.7	11.1	11.5	11.1	11.3	11.7	12.2	
Hi PR	206	222	234	244	231	249	263	274	263	283	299	312	300	322	341	355	337	363	383	400	372	401	423	441	
Lo PR	107	114	125	133	114	121	132	140	118	126	137	146	124	132	144	153	130	138	151	161	134	143	156	166	
MBh	36.5	37.6	40.7	43.6	35.6	36.7	39.7	42.6	34.8	35.8	38.8	41.6	33.9	34.9	37.8	40.6	32.2	33.2	35.9	38.6	29.9	30.7	33.3	35.7	
S/T	0.77	0.69	0.52	0.33	0.79	0.71	0.54	0.35	0.81	0.73	0.55	0.35	0.84	0.75	0.57	0.37	0.87	0.78	0.59	0.38	0.88	0.79	0.60	0.38	
DT	24	23	18	13	25	23	19	13	25	23	19	13	25	23	19	13	25	23	19	13	23	21	17	12	
kW	2.17	2.22	2.29	2.37	2.35	2.40	2.48	2.56	2.50	2.56	2.65	2.74	2.64	2.70	2.79	2.89	2.76	2.82	2.92	3.02	2.86	2.92	3.03	3.13	
Amps	7.7	7.9	8.1	8.4	8.3	8.5	8.7	9.1	9.0	9.2	9.5	9.8	9.6	9.8	10.1	10.5	10.2	10.4	10.8	11.2	10.8	11.0	11.4	11.8	
Hi PR	200	215	227	237	224	241	255	266	255	275	290	302	291	313	330	344	327	352	372	388	361	389	411	428	
Lo PR	104	111	121	129	110	117	128	136	114	122	133	142	120	128	140	149	126	134	146	156	130	139	151	161	

IDB: Entering Indoor Dry Bulb Temperature
 High and low pressures are measured at the liquid and suction service valves.
 Shaded area reflects ACCA (TVA) conditions
 kW = Total system power
 Amps = outdoor unit amps (compressor + fan)

EXPANDED COOLING DATA — DZ18TC0601A / CAPF4961D6*+TXV / MBVC2000A (LOW STAGE)

IDB		OUTDOOR AMBIENT TEMPERATURE												ENTERING INDOOR WET BULB TEMPERATURE													
		65°F				75°F				85°F				95°F				105°F				115°F					
		59	63	67	71	59	63	67	71	59	63	67	71	59	63	67	71	59	63	67	71	59	63	67	71		
80	1350	MBh	41.4	42.3	45.2	48.4	40.5	41.4	44.2	47.2	39.5	40.4	43.1	46.1	38.5	39.4	42.1	45.0	36.6	37.4	40.0	42.7	33.9	34.7	37.0	39.6	
		S/T	0.91	0.86	0.70	0.52	0.95	0.89	0.72	0.54	1.00	0.91	0.74	0.55	1.00	0.94	0.77	0.57	1.00	1.00	0.79	0.59	1.00	1.00	0.80	0.60	
	1200	DT	26	25	21	17	26	25	22	17	27	25	22	17	26	25	22	18	25	25	22	17	23	24	20	16	
		kW	2.26	2.31	2.39	2.47	2.45	2.50	2.59	2.68	2.61	2.67	2.77	2.86	2.76	2.82	2.92	3.02	2.88	2.95	3.05	3.16	2.99	3.06	3.16	3.28	
	1050	Amps	8.0	8.2	8.5	8.8	8.7	8.9	9.1	9.5	9.4	9.6	9.9	10.3	10.0	10.3	10.6	11.0	10.7	10.9	11.3	11.7	11.3	11.5	11.9	12.4	
		Hi PR	210	226	239	249	236	254	268	280	268	289	305	318	306	329	347	362	344	370	391	408	380	409	432	450	
	85	1350	Lo PR	110	117	127	136	116	123	135	143	120	128	140	149	126	135	147	156	133	141	154	164	137	146	159	170
			MBh	40.2	41.1	43.9	46.9	39.3	40.1	42.9	45.9	38.4	39.2	41.9	44.8	37.4	38.2	40.9	43.7	35.5	36.3	38.8	41.5	32.9	33.6	35.9	38.4
		1200	S/T	0.87	0.82	0.67	0.50	0.90	0.85	0.69	0.52	0.93	0.87	0.71	0.53	0.96	0.90	0.73	0.55	0.99	0.93	0.76	0.57	1.00	0.94	0.76	0.57
			DT	27	26	22	18	27	26	23	18	27	26	23	18	27	26	23	18	27	26	23	18	25	24	21	17
1050		kW	2.24	2.29	2.37	2.45	2.43	2.48	2.57	2.66	2.59	2.65	2.74	2.84	2.73	2.80	2.89	3.00	2.86	2.92	3.02	3.13	2.96	3.03	3.14	3.25	
		Amps	8.0	8.1	8.4	8.7	8.6	8.8	9.1	9.4	9.3	9.5	9.8	10.2	9.9	10.2	10.5	10.9	10.6	10.8	11.2	11.6	11.2	11.4	11.8	12.3	
85		1050	Hi PR	208	224	237	247	234	251	266	277	266	286	302	315	303	326	344	359	341	366	387	404	376	405	428	446
			Lo PR	109	116	126	134	115	122	133	142	119	127	138	147	125	133	145	155	131	140	152	162	136	144	158	168
85		1350	MBh	37.1	37.9	40.5	43.3	36.3	37.1	39.6	42.3	35.4	36.2	38.6	41.3	34.5	35.3	37.7	40.3	32.8	33.5	35.8	38.3	30.4	31.1	33.2	35.5
			S/T	0.84	0.79	0.64	0.48	0.87	0.82	0.67	0.50	0.89	0.84	0.68	0.51	0.92	0.86	0.70	0.53	0.96	0.90	0.73	0.55	0.97	0.91	0.74	0.55
	1200	DT	27	26	23	18	28	27	23	18	28	27	23	18	28	27	23	19	27	26	23	18	26	25	21	17	
		kW	2.19	2.24	2.31	2.39	2.37	2.42	2.50	2.59	2.52	2.58	2.67	2.76	2.66	2.72	2.82	2.92	2.78	2.84	2.94	3.05	2.88	2.95	3.05	3.16	
	1050	Amps	7.7	7.9	8.2	8.5	8.4	8.5	8.8	9.1	9.1	9.3	9.6	9.9	9.7	9.9	10.2	10.6	10.3	10.5	10.9	11.3	10.9	11.1	11.5	11.9	
		Hi PR	202	217	230	239	227	244	258	269	258	277	293	306	294	316	334	348	330	355	375	391	365	393	415	433	
	85	1350	Lo PR	105	112	122	130	111	118	129	138	116	123	134	143	121	129	141	150	127	135	148	157	132	140	153	163
			MBh	42.2	43.0	45.0	48.0	41.2	42.0	44.0	46.9	40.2	41.0	42.9	45.8	39.2	40.0	41.9	44.7	37.3	38.0	39.8	42.4	34.5	35.2	36.8	39.3
		1200	S/T	0.96	0.92	0.83	0.68	0.99	0.96	0.86	0.70	1.00	0.98	0.89	0.72	1.00	1.00	0.92	0.74	1.00	1.00	0.95	0.77	1.00	1.00	0.96	0.78
			DT	28	27	26	22	28	27	26	22	27	27	26	22	27	27	26	23	25	26	26	22	24	24	24	21
1050		kW	2.28	2.33	2.41	2.50	2.47	2.53	2.61	2.70	2.64	2.70	2.79	2.89	2.78	2.85	2.95	3.05	2.91	2.97	3.08	3.19	3.01	3.08	3.19	3.31	
		Amps	8.1	8.3	8.5	8.9	8.7	8.9	9.2	9.6	9.5	9.7	10.0	10.4	10.1	10.4	10.7	11.1	10.7	11.0	11.4	11.8	11.4	11.7	12.0	12.5	
85		1350	Hi PR	212	229	241	252	238	257	271	283	271	292	308	321	309	332	351	366	347	374	395	412	384	413	436	455
			Lo PR	111	118	129	137	117	124	136	145	122	129	141	150	128	136	148	158	134	142	155	166	138	147	161	171
		1200	MBh	40.9	41.7	43.7	46.6	40.0	40.7	42.7	45.5	39.0	39.8	41.7	44.4	38.1	38.8	40.6	43.4	36.2	36.9	38.6	41.2	33.5	34.2	35.8	38.2
			S/T	0.91	0.88	0.80	0.65	0.95	0.91	0.82	0.67	0.97	0.94	0.85	0.69	1.00	0.97	0.87	0.71	1.00	1.00	0.91	0.74	1.00	1.00	0.91	0.74
	1050	DT	29	28	27	23	29	29	27	23	29	29	27	23	29	29	27	24	28	28	27	23	26	26	25	22	
		kW	2.26	2.31	2.39	2.47	2.45	2.50	2.59	2.68	2.61	2.67	2.77	2.86	2.76	2.82	2.92	3.02	2.88	2.95	3.05	3.16	2.99	3.06	3.16	3.28	
	85	1350	Amps	8.0	8.2	8.5	8.8	8.7	8.9	9.1	9.5	9.4	9.6	9.9	10.3	10.0	10.3	10.6	11.0	10.7	10.9	11.3	11.7	11.3	11.5	11.9	12.4
			Hi PR	210	226	239	249	236	254	268	280	268	289	305	318	306	329	347	362	344	370	391	408	380	409	432	450
		1050	Lo PR	110	117	127	136	116	123	135	143	120	128	140	149	126	135	147	156	133	141	154	164	137	146	159	170
			MBh	37.8	38.5	40.3	43.0	36.9	37.6	39.4	42.0	36.0	36.7	38.5	41.0	35.1	35.8	37.5	40.0	33.4	34.0	35.6	38.0	30.9	31.5	33.0	35.2
85		1050	S/T	0.88	0.85	0.77	0.62	0.91	0.88	0.80	0.65	0.94	0.90	0.82	0.66	0.97	0.93	0.84	0.68	1.00	0.97	0.87	0.71	1.00	0.98	0.88	0.71
			DT	29	29	27	23	30	29	27	24	30	29	27	24	30	29	27	24	29	29	27	24	27	27	25	22
85		1350	kW	2.21	2.26	2.33	2.41	2.39	2.44	2.52	2.61	2.54	2.60	2.69	2.79	2.69	2.75	2.84	2.94	2.80	2.87	2.97	3.07	2.91	2.98	3.08	3.19
			Amps	7.8	8.0	8.3	8.5	8.4	8.6	8.9	9.2	9.1	9.4	9.7	10.0	9.7	10.0	10.3	10.7	10.4	10.6	11.0	11.4	11.0	11.2	11.6	12.0
		1050	Hi PR	204	220	232	242	229	246	260	271	260	280	296	309	297	319	337	351	334	359	379	395	369	397	419	437
			Lo PR	106	113	124	132	112	120	131	139	117	124	136	144	123	131	142	152	129	137	149	159	133	141	154	165

IDB: Entering Indoor Dry Bulb Temperature
 High and low pressures are measured at the liquid and suction service valves.
 Shaded area reflects AHRI (TVA) conditions
 kW = Total system power
 Amps = outdoor unit amps (compressor + fan)

IDB		OUTDOOR AMBIENT TEMPERATURE												ENTERING INDOOR WET BULB TEMPERATURE													
		65°F				75°F				85°F				95°F				105°F				115°F					
		59	63	67	71	59	63	67	71	59	63	67	71	59	63	67	71	59	63	67	71	59	63	67	71		
70	2000	MBh	54.6	56.5	62.0	-	53.3	55.2	60.5	-	52.0	53.9	59.1	-	50.8	52.6	57.6	-	48.2	50.0	54.8	-	44.7	46.3	50.7	-	
		S/T	0.73	0.61	0.42	-	0.76	0.63	0.44	-	0.78	0.65	0.45	-	0.80	0.67	0.47	-	0.83	0.70	0.48	-	0.84	0.70	0.49	-	
		DT	18	16	12	-	19	16	12	-	19	16	12	-	19	16	12	-	19	16	12	-	17	15	11	-	
	1800	kW	3.48	3.55	3.67	-	3.75	3.83	3.95	-	3.98	4.07	4.20	-	4.19	4.28	4.42	-	4.37	4.46	4.61	-	4.52	4.62	4.77	-	
		Amps	13.0	13.3	13.8	-	14.1	14.4	14.9	-	15.3	15.7	16.2	-	16.4	16.8	17.4	-	17.5	17.9	18.5	-	18.5	19.0	19.7	-	
		Hi PR	206	222	235	-	232	249	263	-	263	283	299	-	300	323	341	-	338	363	384	-	373	401	424	-	
	1600	Lo PR	106	113	124	-	112	120	131	-	117	124	136	-	123	131	143	-	129	137	149	-	133	142	155	-	
		MBh	53.8	55.7	61.0	-	52.5	54.4	59.6	-	51.3	53.1	58.2	-	50.0	51.8	56.8	-	47.5	49.2	53.9	-	44.0	45.6	50.0	-	
		S/T	0.70	0.59	0.41	-	0.73	0.61	0.42	-	0.75	0.62	0.43	-	0.77	0.64	0.45	-	0.80	0.67	0.46	-	0.81	0.67	0.47	-	
	75	2000	DT	19	17	13	-	20	17	13	-	20	17	13	-	20	17	13	-	19	17	13	-	18	16	12	-
			kW	3.41	3.48	3.59	-	3.67	3.74	3.86	-	3.90	3.98	4.11	-	4.10	4.19	4.32	-	4.27	4.36	4.51	-	4.42	4.52	4.67	-
			Amps	12.7	13.0	13.4	-	13.7	14.1	14.5	-	14.9	15.3	15.8	-	16.0	16.4	16.9	-	17.0	17.5	18.1	-	18.1	18.5	19.2	-
1800		Hi PR	201	216	228	-	225	243	256	-	256	276	291	-	292	314	332	-	329	354	373	-	363	391	412	-	
		Lo PR	104	110	120	-	109	116	127	-	114	121	132	-	119	127	139	-	125	133	145	-	130	138	150	-	
		MBh	51.1	52.9	58.0	-	49.9	51.7	56.6	-	48.7	50.5	55.3	-	47.5	49.2	53.9	-	45.1	46.8	51.2	-	41.8	43.3	47.5	-	
1600		S/T	0.67	0.56	0.39	-	0.70	0.58	0.40	-	0.71	0.60	0.41	-	0.74	0.62	0.43	-	0.77	0.64	0.44	-	0.77	0.64	0.45	-	
		DT	20	17	13	-	20	17	13	-	20	17	13	-	20	17	13	-	20	17	13	-	19	16	12	-	
		kW	3.41	3.48	3.59	-	3.67	3.74	3.86	-	3.90	3.98	4.11	-	4.10	4.19	4.32	-	4.27	4.36	4.51	-	4.42	4.52	4.67	-	
70		2000	MBh	55.5	57.1	61.8	66.4	54.2	55.8	60.4	64.8	52.9	54.5	59.0	63.3	51.6	53.1	57.5	61.7	49.0	50.5	54.6	58.6	45.4	46.8	50.6	54.3
			S/T	0.83	0.75	0.56	0.36	0.86	0.77	0.58	0.38	0.89	0.79	0.60	0.39	0.91	0.82	0.62	0.40	0.95	0.85	0.64	0.41	0.96	0.86	0.65	0.42
			DT	21	20	16	11	22	20	16	11	22	20	16	11	22	20	16	11	21	20	16	11	20	18	15	10
	1800	kW	3.51	3.58	3.70	3.81	3.78	3.86	3.98	4.11	4.02	4.10	4.24	4.38	4.23	4.32	4.46	4.61	4.40	4.50	4.65	4.81	4.56	4.66	4.82	4.98	
		Amps	13.1	13.4	13.9	14.4	14.2	14.6	15.1	15.6	15.5	15.9	16.4	17.0	16.6	17.0	17.5	18.2	17.6	18.1	18.7	19.4	18.7	19.2	19.8	20.6	
		Hi PR	209	224	237	247	234	252	266	277	266	286	302	315	303	326	344	359	341	367	387	404	377	405	428	447	
	1600	Lo PR	108	114	125	133	114	121	132	141	118	126	137	146	124	132	144	153	130	138	151	161	134	143	156	166	
		MBh	54.7	56.3	60.9	65.4	53.4	55.0	59.5	63.9	52.1	53.7	58.1	62.3	50.9	52.4	56.7	60.8	48.3	49.7	53.8	57.8	44.7	46.1	49.9	53.5	
		S/T	0.80	0.71	0.54	0.35	0.83	0.74	0.56	0.36	0.85	0.76	0.57	0.37	0.88	0.78	0.59	0.38	0.91	0.81	0.62	0.40	0.92	0.82	0.62	0.40	
	75	2000	DT	22	21	17	12	23	21	17	12	23	21	17	12	23	21	17	12	22	21	17	12	21	19	16	11
			kW	3.49	3.56	3.67	3.79	3.76	3.84	3.96	4.09	3.99	4.08	4.21	4.35	4.20	4.29	4.43	4.58	4.38	4.48	4.62	4.78	4.53	4.63	4.79	4.95
			Amps	13.0	13.4	13.8	14.3	14.1	14.5	15.0	15.5	15.4	15.7	16.3	16.9	16.4	16.9	17.4	18.1	17.5	18.0	18.6	19.3	18.6	19.1	19.7	20.5
1800		Hi PR	207	223	235	245	232	250	264	275	264	284	300	313	301	324	342	357	339	364	385	401	374	403	425	443	
		Lo PR	107	114	124	132	113	120	131	140	117	125	136	145	123	131	143	152	129	137	150	160	134	142	155	165	
		MBh	51.9	53.5	57.9	62.1	50.7	52.2	56.5	60.7	49.5	51.0	55.2	59.2	48.3	49.7	53.8	57.8	45.9	47.3	51.1	54.9	42.5	43.8	47.4	50.8	
1600		S/T	0.76	0.68	0.52	0.33	0.79	0.71	0.54	0.35	0.81	0.73	0.55	0.35	0.84	0.75	0.57	0.37	0.87	0.78	0.59	0.38	0.88	0.79	0.59	0.38	
		DT	23	21	17	12	23	21	17	12	23	21	17	12	23	21	18	12	23	21	17	12	21	20	16	11	
		kW	3.43	3.51	3.62	3.73	3.70	3.78	3.90	4.02	3.93	4.01	4.14	4.28	4.13	4.22	4.36	4.51	4.31	4.40	4.55	4.70	4.45	4.55	4.71	4.86	
1600		Amps	12.8	13.1	13.5	14.1	13.9	14.2	14.7	15.2	15.1	15.5	16.0	16.6	16.1	16.5	17.1	17.8	17.2	17.6	18.2	18.9	18.2	18.7	19.3	20.1	
		Hi PR	203	218	231	241	228	245	259	270	259	279	294	307	295	317	335	350	332	357	377	393	367	395	417	435	
		Lo PR	105	111	122	129	111	118	128	137	115	122	133	142	121	128	140	149	127	135	147	156	131	139	152	162	

IDB: Entering Indoor Dry Bulb Temperature
 High and low pressures are measured at the liquid and suction service valves.
 Shaded area reflects ACCA (TVA) conditions
 kW = Total system power
 Amps = outdoor unit amps (compressor + fan)

EXPANDED COOLING DATA — DZ18TC0601A / CAPF4961D6*+TXV / MBVC2000A (HIGH STAGE)

IDB	AIRFLOW	OUTDOOR AMBIENT TEMPERATURE												ENTERING INDOOR WET BULB TEMPERATURE											
		65°F				75°F				85°F				95°F				105°F				115°F			
		59	63	67	71	59	63	67	71	59	63	67	71	59	63	67	71	59	63	67	71	59	63	67	71
80	2000	56.5	57.7	61.6	65.9	55.2	56.4	60.2	64.4	53.8	55.0	58.8	62.8	52.5	53.7	57.3	61.3	49.9	51.0	54.5	58.2	46.2	47.2	50.5	53.9
	S/T	0.91	0.86	0.70	0.52	0.95	0.89	0.72	0.54	0.97	0.91	0.74	0.55	1.00	0.94	0.77	0.57	1.00	0.98	0.79	0.59	1.00	0.98	0.80	0.60
	DT	24	23	20	16	24	23	20	16	24	23	20	16	24	23	20	16	23	23	20	16	21	21	19	15
	kW	3.54	3.61	3.73	3.85	3.81	3.89	4.02	4.15	4.05	4.14	4.27	4.41	4.26	4.35	4.50	4.65	4.44	4.54	4.69	4.85	4.60	4.70	4.86	5.02
	Amps	13.2	13.6	14.0	14.6	14.3	14.7	15.2	15.8	15.6	16.0	16.5	17.2	16.7	17.1	17.7	18.4	17.8	18.3	18.9	19.6	18.9	19.4	20.0	20.8
	Hi PR	211	227	239	250	236	254	269	280	269	289	305	319	306	329	348	363	344	371	391	408	381	410	432	451
	Lo PR	109	116	126	134	115	122	133	142	119	127	139	148	125	133	146	155	131	140	152	162	136	144	158	168
	1800	55.6	56.9	60.7	64.9	54.3	55.5	59.3	63.4	53.0	54.2	57.9	61.9	51.8	52.9	56.5	60.4	49.2	50.2	53.7	57.4	45.5	46.5	49.7	53.2
	S/T	0.88	0.82	0.67	0.50	0.91	0.85	0.69	0.52	0.93	0.87	0.71	0.53	0.96	0.90	0.73	0.55	1.00	0.93	0.76	0.57	1.00	0.94	0.77	0.57
	DT	25	24	21	17	25	24	21	17	25	24	21	17	25	24	21	17	25	24	21	17	23	22	19	16
kW	3.52	3.59	3.70	3.82	3.79	3.87	3.99	4.12	4.03	4.11	4.25	4.39	4.24	4.33	4.47	4.62	4.42	4.51	4.66	4.82	4.57	4.67	4.83	4.99	
Amps	13.2	13.5	13.9	14.5	14.2	14.6	15.1	15.7	15.5	15.9	16.4	17.1	16.6	17.0	17.6	18.3	17.7	18.1	18.8	19.5	18.8	19.2	19.9	20.7	
Hi PR	209	225	238	248	235	253	267	278	267	287	303	316	304	327	346	360	342	368	389	405	378	407	429	448	
Lo PR	108	115	125	133	114	121	132	141	118	126	138	147	124	132	145	154	130	139	151	161	135	143	157	167	
1600	52.9	54.0	57.7	61.7	51.6	52.8	56.4	60.2	50.4	51.5	55.0	58.8	49.2	50.2	53.7	57.4	46.7	47.7	51.0	54.5	43.3	44.2	47.2	50.5	
S/T	0.84	0.79	0.64	0.48	0.87	0.82	0.66	0.50	0.89	0.84	0.68	0.51	0.92	0.86	0.70	0.52	0.95	0.90	0.73	0.54	0.96	0.90	0.73	0.55	
DT	25	24	21	17	26	25	21	17	26	25	22	17	26	25	22	17	26	25	21	17	24	23	20	16	
kW	3.46	3.53	3.65	3.76	3.73	3.81	3.93	4.06	3.96	4.05	4.18	4.31	4.17	4.26	4.40	4.54	4.34	4.44	4.58	4.74	4.49	4.59	4.75	4.91	
Amps	12.9	13.2	13.7	14.2	14.0	14.3	14.8	15.4	15.2	15.6	16.1	16.7	16.3	16.7	17.3	17.9	17.4	17.8	18.4	19.1	18.4	18.9	19.5	20.3	
Hi PR	205	221	233	243	230	248	261	273	262	282	297	310	298	321	339	353	335	361	381	397	370	399	421	439	
Lo PR	106	112	123	131	112	119	130	138	116	123	135	144	122	130	142	151	128	136	148	158	132	141	154	163	
85	2000	57.5	58.6	61.3	65.4	56.1	57.2	59.9	63.9	54.8	55.8	58.5	62.4	53.4	54.5	57.1	60.9	50.8	51.8	54.2	57.8	47.0	47.9	50.2	53.6
	S/T	0.96	0.92	0.83	0.68	0.99	0.96	0.86	0.70	1.00	0.98	0.89	0.72	1.00	1.00	0.92	0.74	1.00	1.00	0.95	0.77	1.00	1.00	0.96	0.78
	DT	25	25	24	20	26	25	24	21	25	25	24	21	25	25	24	21	23	24	24	20	22	22	22	19
	kW	3.56	3.64	3.76	3.88	3.84	3.92	4.05	4.18	4.08	4.17	4.31	4.45	4.30	4.39	4.54	4.69	4.48	4.58	4.73	4.89	4.63	4.74	4.90	5.06
	Amps	13.4	13.7	14.2	14.7	14.5	14.8	15.3	15.9	15.8	16.2	16.7	17.3	16.9	17.3	17.9	18.6	18.0	18.4	19.1	19.8	19.1	19.6	20.2	21.0
	Hi PR	213	229	242	252	239	257	271	283	272	292	309	322	309	333	351	367	348	374	395	412	384	414	437	456
	Lo PR	110	117	127	136	116	123	135	143	120	128	140	149	127	135	147	157	133	141	154	164	137	146	159	170
	1800	56.6	57.7	60.4	64.5	55.3	56.4	59.0	63.0	54.0	55.0	57.6	61.5	52.7	53.7	56.2	60.0	50.0	51.0	53.4	57.0	46.3	47.2	49.5	52.8
	S/T	0.92	0.89	0.80	0.65	0.95	0.92	0.83	0.67	0.98	0.94	0.85	0.69	1.00	0.97	0.88	0.71	1.00	1.00	0.91	0.74	1.00	1.00	0.92	0.74
	DT	27	26	25	21	27	26	25	22	27	26	25	22	27	27	25	22	26	26	25	21	24	24	23	20
kW	3.55	3.62	3.73	3.85	3.82	3.90	4.03	4.16	4.06	4.15	4.28	4.42	4.27	4.37	4.51	4.66	4.45	4.55	4.70	4.86	4.61	4.71	4.87	5.03	
Amps	13.3	13.6	14.1	14.6	14.4	14.7	15.2	15.8	15.7	16.0	16.6	17.2	16.8	17.2	17.8	18.5	17.9	18.3	18.9	19.7	19.0	19.4	20.1	20.9	
Hi PR	211	227	240	250	237	255	269	281	270	290	306	320	307	330	349	364	345	372	393	409	382	411	434	452	
Lo PR	109	116	127	135	115	122	134	142	120	127	139	148	126	134	146	155	132	140	153	163	136	145	158	168	
1600	53.8	54.8	57.4	61.3	52.5	53.5	56.1	59.8	51.3	52.3	54.7	58.4	50.0	51.0	53.4	57.0	47.5	48.4	50.7	54.1	44.0	44.9	47.0	50.1	
S/T	0.88	0.85	0.77	0.62	0.91	0.88	0.79	0.64	0.93	0.90	0.81	0.66	0.96	0.93	0.84	0.68	1.00	0.97	0.87	0.71	1.00	0.97	0.88	0.71	
DT	27	27	25	22	27	27	26	22	28	27	26	22	28	27	26	22	27	27	25	22	25	25	24	21	
kW	3.49	3.56	3.67	3.79	3.76	3.84	3.96	4.09	3.99	4.08	4.21	4.35	4.20	4.29	4.43	4.58	4.38	4.47	4.62	4.78	4.53	4.63	4.79	4.95	
Amps	13.0	13.4	13.8	14.3	14.1	14.5	14.9	15.5	15.4	15.7	16.3	16.9	16.4	16.9	17.4	18.1	17.5	18.0	18.6	19.3	18.6	19.1	19.7	20.5	
Hi PR	207	223	235	245	232	250	264	275	264	284	300	313	301	324	342	357	339	364	385	401	374	403	425	443	
Lo PR	107	114	124	132	113	120	131	140	117	125	136	145	123	131	143	152	129	137	150	160	133	142	155	165	

Shaded area reflects AHRI (TVA) conditions
 kW = Total system power
 Amps = outdoor unit amps (compressor + fan)

IDB: Entering Indoor Dry Bulb Temperature
 High and low pressures are measured at the liquid and suction service valves.

IDB: Entering Indoor Dry Bulb Temperature
 High and low pressures are measured at the liquid and suction service valves.

DZ18TC0361A* / CA*F3642C6A*+TXV/ MBVC1600**-1 — LOW STAGE

	OUTDOOR AMBIENT TEMPERATURE																	
	65	60	55	50	47	45	40	35	30	25	20	17	15	10	5	0	-5	-10
MBh	30.8	29.2	27.4	25.6	24.5	23.7	22.0	20.3	18.0	16.6	15.3	14.5	13.9	12.5	11.1	9.7	8.3	6.8
ΔT	33.5	31.8	29.9	27.9	26.7	25.9	24.0	22.1	19.6	18.1	16.7	15.8	15.2	13.6	12.1	10.5	9.0	7.4
kW	1.98	1.94	1.90	1.86	1.8	1.81	1.77	1.73	1.78	1.74	1.69	1.67	1.65	1.60	1.56	1.51	1.47	1.42
Amps	9.5	8.8	8.2	7.7	7.5	7.3	6.9	6.5	6.2	6.0	5.7	5.5	5.5	5.2	4.8	4.5	4.2	3.7
COP	4.54	4.39	4.23	4.04	3.91	3.83	3.64	3.44	2.96	2.81	2.65	2.54	2.48	2.28	2.08	1.87	1.64	1.39
EER	15.5	15.0	14.4	13.8	13.4	13.1	12.4	11.7	10.1	9.6	9.1	8.7	8.5	7.8	7.1	6.4	5.6	4.7

DZ18TC0361A* / CA*F3642C6A*+TXV/ MBVC1600**-1 — HIGH STAGE

	OUTDOOR AMBIENT TEMPERATURE																	
	65	60	55	50	47	45	40	35	30	25	20	17	15	10	5	0	-5	-10
MBh	44.5	42.2	39.7	37.1	35.4	34.3	31.9	29.4	27.5	25.4	23.4	22.0	21.2	19.1	16.9	14.7	12.6	10.3
ΔT	33.0	31.2	29.4	27.5	26.2	25.4	23.6	21.8	20.4	18.8	17.3	16.3	15.7	14.1	12.5	10.9	9.3	7.6
kW	2.81	2.75	2.69	2.63	2.6	2.57	2.52	2.46	2.43	2.37	2.32	2.28	2.26	2.20	2.14	2.08	2.02	1.97
Amps	12.8	11.8	11.1	10.4	10.0	9.8	9.2	8.7	8.3	8.0	7.6	7.4	7.3	6.9	6.4	6.0	5.5	4.9
COP	4.64	4.49	4.32	4.12	3.99	3.90	3.71	3.50	3.30	3.13	2.95	2.83	2.75	2.54	2.31	2.07	1.82	1.53
EER	15.9	15.3	14.8	14.1	13.6	13.3	12.7	12.0	11.3	10.7	10.1	9.7	9.4	8.7	7.9	7.1	6.2	5.2

DZ18TC0481A* / CA*F4860*6A*+TXV/ MBVC2000**- — LOW STAGE

	OUTDOOR AMBIENT TEMPERATURE																	
	65	60	55	50	47	45	40	35	30	25	20	17	15	10	5	0	-5	-10
MBh	43.8	41.4	39.0	36.5	34.8	33.7	31.3	28.9	27.0	25.0	23.0	21.7	20.9	18.7	16.6	14.5	12.4	10.1
ΔT	33.8	32.0	30.1	28.1	26.9	26.0	24.2	22.3	20.9	19.3	17.7	16.7	16.1	14.5	12.8	11.2	9.5	7.8
kW	2.67	2.62	2.56	2.50	2.5	2.44	2.39	2.33	2.44	2.38	2.32	2.28	2.26	2.19	2.13	2.07	2.01	1.95
Amps	12.7	11.7	10.9	10.2	9.8	9.6	9.0	8.5	8.1	7.7	7.2	7.0	6.9	6.5	6.0	5.6	5.1	4.5
COP	4.79	4.63	4.46	4.27	4.13	4.04	3.84	3.63	3.24	3.07	2.90	2.78	2.71	2.50	2.28	2.05	1.80	1.52
EER	16.4	15.8	15.2	14.6	14.1	13.8	13.1	12.4	11.1	10.5	9.9	9.5	9.3	8.5	7.8	7.0	6.2	5.2

DZ18TC0481A* / CA*F4860*6A*+TXV/ MBVC2000**-1 — HIGH STAGE

	OUTDOOR AMBIENT TEMPERATURE																	
	65	60	55	50	47	45	40	35	30	25	20	17	15	10	5	0	-5	-10
MBh	62.2	58.9	55.4	51.8	49.5	48.0	44.6	41.1	38.9	35.9	33.0	31.2	30.0	27.0	23.9	20.8	17.8	14.6
ΔT	32.9	31.2	29.3	27.4	26.2	25.4	23.6	21.7	20.6	19.0	17.5	16.5	15.9	14.3	12.6	11.0	9.4	7.7
kW	3.80	3.72	3.64	3.56	3.5	3.49	3.41	3.33	3.28	3.20	3.12	3.07	3.04	2.96	2.89	2.81	2.73	2.66
Amps	17.0	15.7	14.7	13.8	13.2	13.0	12.2	11.5	11.0	10.5	10.0	9.7	9.6	9.1	8.4	7.9	7.2	6.4
COP	4.80	4.64	4.46	4.26	4.12	4.03	3.82	3.61	3.47	3.29	3.10	2.97	2.89	2.66	2.42	2.17	1.90	1.61
EER	16.4	15.8	15.2	14.5	14.1	13.8	13.1	12.3	11.9	11.2	10.6	10.2	9.9	9.1	8.3	7.4	6.5	5.5

Calculations are based on nominal CFM and 70 °F indoor dry bulb.

Note: Shaded area is AHRI Rating Conditions at 47°F outdoor ambient temperature

Amps = Outdoor unit amps (comp.+fan)

kW = Total system power

DZ18TC0601A* / CAPF4961D6+TXV / MBVC2000A — LOW STAGE

	OUTDOOR AMBIENT TEMPERATURE																	
	65	60	55	50	47	45	40	35	30	25	20	17	15	10	5	0	-5	-10
MBh	49.8	47.1	44.4	41.5	39.6	38.4	35.6	32.9	29.8	27.5	25.3	23.9	23.0	20.7	18.3	16.0	13.6	11.2
T/R	38.4	36.4	34.2	32.0	30.6	29.6	27.5	25.4	23.0	21.2	19.5	18.5	17.8	15.9	14.1	12.3	10.5	8.6
kW	3.41	3.33	3.26	3.19	3.1	3.12	3.05	2.97	3.37	3.28	3.20	3.15	3.11	3.03	2.94	2.86	2.77	2.69
Amps	16.8	15.6	14.6	13.7	13.2	12.9	12.2	11.6	11.1	10.6	10.1	9.8	9.7	9.2	8.6	8.0	7.4	6.7
COP	4.28	4.14	3.98	3.81	3.68	3.60	3.42	3.24	2.59	2.45	2.32	2.22	2.17	2.00	1.82	1.64	1.44	1.22
EER	14.6	14.1	13.6	13.0	12.6	12.3	11.7	11.1	8.8	8.4	7.9	7.6	7.4	6.8	6.2	5.6	4.9	4.2

DZ18TC0601A* / CAPF4961D6+TXV / MBVC2000A — HIGH STAGE

	OUTDOOR AMBIENT TEMPERATURE																	
	65	60	55	50	47	45	40	35	30	25	20	17	15	10	5	0	-5	-10
MBh	71.0	67.2	63.3	59.2	56.5	54.7	50.9	46.9	43.6	40.3	37.1	35.0	33.7	30.2	26.8	23.4	20.0	16.3
T/R	36.5	34.6	32.6	30.4	29.1	28.2	26.2	24.1	22.4	20.7	19.1	18.0	17.3	15.6	13.8	12.0	10.3	8.4
kW	4.57	4.48	4.39	4.30	4.2	4.21	4.12	4.03	4.52	4.41	4.31	4.24	4.20	4.09	3.99	3.88	3.77	3.67
Amps	21.4	19.8	18.5	17.3	16.7	16.4	15.4	14.6	14.0	13.3	12.6	12.3	12.2	11.5	10.7	10.1	9.3	8.3
COP	4.55	4.39	4.22	4.03	3.90	3.81	3.61	3.41	2.82	2.67	2.52	2.41	2.35	2.16	1.97	1.76	1.55	1.30
EER	15.5	15.0	14.4	13.8	13.3	13.0	12.3	11.6	9.6	9.1	8.6	8.2	8.0	7.4	6.7	6.0	5.3	4.5

Calculations are based on nominal CFM and 70 °F indoor dry bulb.

Amps = Outdoor unit amps (comp.+fan)

Note: Shaded area is AHRI Rating Conditions at 47°F outdoor ambient temperature

kW = Total system power



ENERGY STAR-CERTIFIED COMBINATIONS [^]

OUTDOOR UNIT	INDOOR UNITS		COOLING RATINGS [▶]				TVA RATINGS ³		HEATING RATINGS [^]			CFM	AHRI #
	COILS/AIR HANDLERS	FURNACES	TOTAL	SENS.	SEER ¹	EER ²	TOTAL	SENS.	HI ⁴	HSPF ⁵	LOW ⁶		
DZ18TC0361A*	AVPTC48D14A*		36,000	27,400	17.5	12.5	33,400	27,000	35,000	9.25	20,400	1,200	6545631
DZ18TC0481A*	DV48PTCD14A*		47,000	35,400	17.5	12.5	43,500	34,800	47,000	9.25	29,000	1,700	6545719
DZ18TC0601A*	AVPTC60D14A*		56,000	40,000	16.5	12	52,000	40,500	56,000	9	34,600	1,800	6545751

[^] ENERGY STAR Notes

- Proper sizing and installation of equipment is critical to achieve optimal performance. Split system air conditioners and heat pumps must be matched with appropriate coil components to meet ENERGY STAR[®] criteria. Ask your contractor for details or visit www.energystar.gov.
- The www.energystar.gov website provides up-to-date system combinations certified to meet ENERGY STAR requirements.

▶ Rated in accordance with ANSI/AHRI Standard 210/240

¹ Seasonal Energy Efficiency Ratio

³ TVA Rating: BTU/h @ 75°F/ 63°F - 95°F

⁵ HSPF = Heating Seasonal Performance Factor

⁷ CFM at High stage

² Energy Efficiency Ratio @ 80°F/ 67°F/ 95°F

⁴ Rated heating capacity at 47°F outdoor per AHRI 210/240

⁶ Heating capacity at 17°F outdoor

⁸ CFM at Intermediate and low stage

NOTES

- Always check the S&R plate for electrical data on the unit being installed.
- When matching outdoor unit to indoor unit, use the piston supplied with the outdoor unit or that specified on the piston kit chart supplied with the indoor unit.
- EEP - Order from Service Dept. Part No. B13707-38 or new Solid State Board B13707-35S. Part No. B13707-38 is not interchangeable with B13707-35S. The Goodman brand gas furnace contains the EEP cooling time delay.

OUTDOOR UNIT	INDOOR UNITS		COOLING RATINGS ^				TVA RATINGS ^3		HEATING RATINGS ^			CFM	AHRI #
	COILS/AIR HANDLERS	FURNACES	TOTAL	SENS.	SEER ¹	EER ²	TOTAL	SENS.	Hi ⁴	HSPF ⁵	Low ⁶		
DZ18TC 0361A*	AVPTC42D14A*		35,000	26,600	17.5	12.5	32,400	26,200	35,000	9.25	20,400	1,200	6545629
	CA*F3743*6D*+MBVC1600**-.1A*+TXV		35,000	26,600	18	13	32,400	26,200	35,000	9.5	20,400	1,250	6545633
	CA*F3743*6D*+MBVC2000**-.1A*+TXV		35,000	26,600	18	13	32,400	26,200	34,800	9.25	20,400	1,250	6545634
	CA*F3743*6D*+TXV	D*80VC0803B*A*	34,600	26,800	17.5	12.5	33,400	26,200	34,800	9.3	20,000	1150	9949333
	CA*F3743*6D*+TXV	D*80VC0804C*A*	34,600	26,800	17.5	12.5	33,400	26,200	34,800	9.3	20,000	1250	9949336
	CA*F3743*6D*+TXV	D*80VC0805D*A*	34,600	26,800	17.5	12.5	33,400	26,200	34,800	9.3	20,000	1200	9949339
	CA*F3743*6D*+TXV	DD80VC0805C*A*	34,600	26,200	17.5	12.5	32,000	26,000	35,000	9.3	20,000	1,250	6545635
	CA*F3743*6D*+TXV	DD80VC1005C*A*	34,600	26,200	17.5	12.5	32,000	26,000	35,000	9.3	20,000	1,230	6545636
	CA*F3743*6D*+TXV	D*80VC0604B*A*	34,600	26,200	17.5	12.5	32,000	26,000	34,800	9.3	20,000	1,260	6547140
	CA*F3743*6D*+TXV	D*80VC0805C*A*	34,600	26,200	17.5	12.5	32,000	26,000	34,800	9.3	20,000	1,250	6547141
	CA*F3743*6D*+TXV	D*80VC1005C*A*	34,600	26,200	17.5	12.5	32,000	26,000	35,000	9.3	20,000	1,210	6547142
	CA*F3743*6D*+TXV	D*96VC0403BNA*	34,600	26,200	16.5	12.5	32,000	26,000	35,000	9	20,000	1,200	7364798
	CA*F3743*6D*+TXV	D*96VC0603BNA*	34,600	26,200	16.5	12.5	32,000	26,000	35,000	9	20,000	1,200	7364802
	CA*F3743*6D*+TXV	D*96VC0803BNA*	34,600	26,200	16.5	12.5	32,000	26,000	35,000	9	20,000	1,200	7364806
	CA*F3743*6D*+TXV	D*96VC0804CNA*	34,600	26,200	17	12.5	32,000	26,000	35,000	9	20,000	1,200	7364810
	CA*F3743*6D*+TXV	D*96VC1005CNA*	34,600	26,200	17	12.5	32,000	26,000	35,000	9	20,000	1,200	7364814
	CA*F3743*6D*+TXV	D*97MC0603BNA*	34,600	26,200	16.5	12.5	32,000	26,000	35,000	9	20,000	1,200	7364828
	CA*F3743*6D*+TXV	D*97MC0803BNA*	34,600	26,200	16.5	12.5	32,000	26,000	35,000	9	20,000	1,200	7364832
	CA*F3743*6D*+TXV	D*97MC0804CNA*	34,600	26,200	17	12.5	32,000	26,000	35,000	9	20,000	1,200	7364836
	CA*F3743*6D*+TXV	D*97MC1005CNA*	34,600	26,200	17	12.5	32,000	26,000	35,000	9	20,000	1,200	7364840
	CA*F3743*6D*+TXV	D*96VE0603BNA*	34,600	26,200	16.5	12.5	32,000	26,000	35,000	9	20,000	1,215	7368775
	CA*F3743*6D*+TXV	D*96VE0803BNA*	34,600	26,200	16.5	12.5	32,000	26,000	35,000	9	20,000	1,275	7368779
	CA*F4860*6D*+TXV	D*80VC0805D*A*	35,000	27,200	17.5	12.5	33,800	26,600	34,800	9.3	20,000	1200	9949340
	CA*F4860*6D*+TXV	DD80VC0805C*A*	35,000	26,600	17.5	12.5	32,400	26,200	35,000	9.3	20,000	1,250	6545653
	CA*F4860*6D*+TXV	D*80VC0805C*A*	35,000	26,600	17.5	12.5	32,400	26,200	34,800	9.3	20,000	1,250	6547156
	CA*F4961*6D*+MBVC1600**-.1A*+TXV		35,000	26,600	18	13	32,400	26,200	35,000	9.5	20,000	1,250	6545655
	CA*F4961*6D*+MBVC2000**-.1A*+TXV		35,000	26,600	18	13	32,400	26,200	35,000	9.25	20,400	1,250	6545656
	CA*F4961*6D*+TXV	D*80VC0603B*A*	34,600	26,800	17.5	12.5	33,400	26,200	34,800	9.3	20,000	1200	9949331
	CA*F4961*6D*+TXV	D*80VC0803B*A*	34,600	26,800	17.5	12.5	33,400	26,200	34,800	9.3	20,000	1150	9949334
	CA*F4961*6D*+TXV	D*80VC0804C*A*	34,600	26,800	17.5	12.5	33,400	26,200	34,800	9.3	20,000	1250	9949337
	CA*F4961*6D*+TXV	D*80VC0805D*A*	34,600	26,800	17.5	12.5	33,400	26,200	34,800	9.3	20,000	1200	9949341
	CA*F4961*6D*+TXV	DD80VC0805C*A*	34,600	26,200	17.5	12.5	32,000	26,000	35,000	9.3	20,000	1,250	6545657
	CA*F4961*6D*+TXV	DD80VC1005C*A*	34,600	26,200	17.5	12.5	32,000	26,000	35,000	9.3	20,000	1,230	6545658
	CA*F4961*6D*+TXV	D*80VC0604B*A*	34,600	26,200	17.5	12.5	32,000	26,000	34,800	9.3	20,000	1,260	6547157
	CA*F4961*6D*+TXV	D*80VC0805C*A*	34,600	26,200	17.5	12.5	32,000	26,000	34,800	9.3	20,000	1,250	6547158
	CA*F4961*6D*+TXV	D*80VC1005C*A*	34,600	26,200	17.5	12.5	32,000	26,000	35,000	9.3	20,000	1,210	6547159
	CA*F4961*6D*+TXV	D*96VC0403BNA*	34,600	26,200	17	12.5	32,000	26,000	35,000	9	20,000	1,200	7364799
	CA*F4961*6D*+TXV	D*96VC0603BNA*	34,600	26,200	17	12.5	32,000	26,000	35,000	9	20,000	1,200	7364803
	CA*F4961*6D*+TXV	D*96VC0803BNA*	34,600	26,200	17	12.5	32,000	26,000	35,000	9	20,000	1,200	7364807
	CA*F4961*6D*+TXV	D*96VC0804CNA*	35,000	26,600	17	12.5	32,400	26,200	36,000	9	20,000	1,200	7364811
	CA*F4961*6D*+TXV	D*96VC1005CNA*	35,000	26,600	17	12.5	32,400	26,200	36,000	9	20,000	1,200	7364815
	CA*F4961*6D*+TXV	D*97MC0603BNA*	34,600	26,200	17	12.5	32,000	26,000	35,000	9	20,000	1,200	7364829
CA*F4961*6D*+TXV	D*97MC0803BNA*	34,600	26,200	17	12.5	32,000	26,000	35,000	9	20,000	1,200	7364833	
CA*F4961*6D*+TXV	D*97MC0804CNA*	35,000	26,600	17	12.5	32,400	26,200	36,000	9	20,000	1,200	7364837	
CA*F4961*6D*+TXV	D*97MC1005CNA*	35,000	26,600	17	12.5	32,400	26,200	36,000	9	20,000	1,200	7364841	
CA*F4961*6D*+TXV	D*96VE0603BNA*	35,000	26,600	17	12.5	32,400	26,200	35,000	9	20,000	1,215	7368776	
CA*F4961*6D*+TXV	D*96VE0803BNA*	35,000	26,600	17	12.5	32,400	26,200	35,000	9	20,000	1,275	7368780	

See Notes on Page 22.

OUTDOOR UNIT	INDOOR UNITS		COOLING RATINGS ^				TVA RATINGS ^3		HEATING RATINGS ^			CFM	AHRI #
	COILS/AIR HANDLERS	FURNACES	TOTAL	SENS.	SEER ¹	EER ²	TOTAL	SENS.	Hi ⁴	HSPF ⁵	Low ⁶		
DZ18TC 0361A* (cont.)	CHPF3743C6B*+MBVC1600**-1A*+TXV		35,000	26,600	18	13	32,400	26,200	35,000	9.5	20,400	1,250	6545675
	CHPF3743C6B*+TXV	D*80VC0603B*A*	34,600	26,800	17.0	12.5	33,400	26,200	34,800	9.3	20,000	1100	9949332
	CHPF3743C6B*+TXV	D*80VC0803B*A*	34,600	26,800	17.0	12.5	33,400	26,200	34,800	9.3	20,000	1150	9949335
	CHPF3743C6B*+TXV	D*80VC0804C*A*	34,600	26,800	17.0	12.5	33,400	26,200	34,800	9.3	20,000	1200	9949338
	CHPF3743C6B*+TXV	D*80VC0805D*A*	34,600	26,800	17.0	12.5	33,400	26,200	34,800	9.3	20,000	1200	9949342
	CHPF3743C6B*+TXV	D*80VC0604B*A*	34,600	26,200	17	12.5	32,000	26,000	34,800	9.3	20,000	1,260	6547173
	CHPF3743C6B*+TXV	D*80VC0805C*A*	34,600	26,200	17	12.5	32,000	26,000	34,800	9.3	20,000	1,250	6547174
	CHPF3743C6B*+TXV	D*80VC1005C*A*	34,600	26,200	17	12.5	32,000	26,000	35,000	9.3	20,000	1,210	6547175
	CHPF3743C6B*+TXV	D*96VC0403BNA*	34,600	26,200	16.5	12	32,000	26,000	35,000	9	20,000	1,200	7364800
	CHPF3743C6B*+TXV	D*96VC0603BNA*	34,600	26,200	16.5	12	32,000	26,000	35,000	9	20,000	1,200	7364804
	CHPF3743C6B*+TXV	D*96VC0803BNA*	34,600	26,200	16.5	12	32,000	26,000	35,000	9	20,000	1,200	7364808
	CHPF3743C6B*+TXV	D*96VC0804CNA*	34,600	26,200	16.5	12.5	32,000	26,000	35,000	9	20,000	1,200	7364812
	CHPF3743C6B*+TXV	D*96VC1005CNA*	34,600	26,200	16.5	12.5	32,000	26,000	35,000	9	20,000	1,200	7364816
	CHPF3743C6B*+TXV	D*97MC0603BNA*	34,600	26,200	16.5	12	32,000	26,000	35,000	9	20,000	1,200	7364830
	CHPF3743C6B*+TXV	D*97MC0803BNA*	34,600	26,200	16.5	12	32,000	26,000	35,000	9	20,000	1,200	7364834
	CHPF3743C6B*+TXV	D*97MC0804CNA*	34,600	26,200	16.5	12.5	32,000	26,000	35,000	9	20,000	1,200	7364838
	CHPF3743C6B*+TXV	D*97MC1005CNA*	34,600	26,200	16.5	12.5	32,000	26,000	35,000	9	20,000	1,200	7364842
	CHPF3743C6B*+TXV	D*96VE0603BNA*	34,600	26,200	16.5	12	32,000	26,000	35,000	9	20,000	1,215	7368777
	CHPF3743C6B*+TXV	D*96VE0803BNA*	34,600	26,200	16.5	12	32,000	26,000	35,000	9	20,000	1,275	7368781
	CHPF3743D6B*+MBVC2000**-1A*+TXV		35,000	26,600	18	13	32,400	26,200	35,000	9.25	20,000	1,250	6545683
	CHPF3743D6B*+TXV	D*80VC0805D*A*	34,600	26,800	17.0	12.5	33,400	26,200	34,800	9.3	20,000	1200	9949343
	CHPF3743D6B*+TXV	D*80VC0805C*A*	34,600	26,200	17	12.5	32,000	26,000	34,800	9.3	20,000	1,250	6547180
	CHPF3743D6B*+TXV	D*80VC1005C*A*	34,600	26,200	17	12.5	32,000	26,000	35,000	9.3	20,000	1,210	6547181
	CHPF4860D6D*+MBVC2000**-1A*+TXV		35,000	26,600	18	13	32,400	26,200	35,000	9.25	20,000	1,250	6545695
	CHPF4860D6D*+TXV	D*80VC0805D*A*	34,600	26,800	17.5	12.5	33,400	26,200	34,800	9.3	20,000	1200	9949344
	CHPF4860D6D*+TXV	D*80VC0805C*A*	34,600	26,200	17.5	12.5	32,000	26,000	34,800	9.3	20,000	1,250	6547191
	CHPF4860D6D*+TXV	D*80VC1005C*A*	34,600	26,200	17.5	12.5	32,000	26,000	35,000	9.3	20,000	1,210	6547192
	CHPF4860D6D*+TXV	D*96VC0403BNA*	34,600	26,200	16.5	12	32,000	26,000	35,000	9	20,000	1,200	7364801
	CHPF4860D6D*+TXV	D*96VC0603BNA*	34,600	26,200	16.5	12	32,000	26,000	35,000	9	20,000	1,200	7364805
	CHPF4860D6D*+TXV	D*96VC0803BNA*	34,600	26,200	16.5	12	32,000	26,000	35,000	9	20,000	1,200	7364809
	CHPF4860D6D*+TXV	D*96VC0804CNA*	35,000	26,600	16.5	12	32,400	26,200	35,000	9	20,000	1,200	7364813
	CHPF4860D6D*+TXV	D*96VC1005CNA*	35,000	26,600	16.5	12	32,400	26,200	35,000	9	20,000	1,200	7364817
	CHPF4860D6D*+TXV	D*97MC0603BNA*	34,600	26,200	16.5	12	32,000	26,000	35,000	9	20,000	1,200	7364831
	CHPF4860D6D*+TXV	D*97MC0803BNA*	34,600	26,200	16.5	12	32,000	26,000	35,000	9	20,000	1,200	7364835
	CHPF4860D6D*+TXV	D*97MC0804CNA*	35,000	26,600	16.5	12	32,400	26,200	35,000	9	20,000	1,200	7364839
	CHPF4860D6D*+TXV	D*97MC1005CNA*	35,000	26,600	16.5	12	32,400	26,200	35,000	9	20,000	1,200	7364843
	CHPF4860D6D*+TXV	D*96VE0603BNA*	35,000	26,600	16.5	12	32,400	26,200	35,000	9	20,000	1,215	7368778
	CHPF4860D6D*+TXV	D*96VE0803BNA*	35,000	26,600	17	12.5	32,400	26,200	35,000	9	20,000	1,275	7368782
	DV37PTCD14A*		35,000	26,600	17.5	12.5	32,400	26,200	35,000	9.5	20,400	1,245	8996315
	DV42PTCD14A*		35,000	26,600	17.5	12.5	32,400	26,200	35,000	9.25	20,400	1,200	6545630
DV48PTCD14A*		36,000	27,400	17.5	12.5	33,400	27,000	35,000	9.25	20,400	1,200	6545632	
DZ18TC 0481A*	AVPTC48D14A*		47,000	35,400	17.5	12.5	43,500	34,800	47,000	9.25	29,000	1,700	6545718
	CA*F4961*6D*+MBVC1600**-1A*+TXV		47,000	35,400	17.5	12.5	43,500	34,800	47,000	9.25	29,000	1,750	6545720
	CA*F4961*6D*+MBVC2000**-1A*+TXV		47,500	35,600	18	13	44,000	35,200	47,500	9.5	29,600	1,750	6545721
	CA*F4961*6D*+TXV	D*80VC0805D*A*	47,000	37,600	17.5	12.5	45,500	36,600	47,000	9.3	29,000	1500	9949345
	CA*F4961*6D*+TXV	DD80VC0805C*A*	47,000	35,400	17.5	12.5	43,500	34,800	47,000	9.3	29,000	1,580	6545722

See Notes on Page 22.

OUTDOOR UNIT	INDOOR UNITS		COOLING RATINGS ^				TVA RATINGS ^3		HEATING RATINGS ^			CFM	AHRI #
	COILS/AIR HANDLERS	FURNACES	TOTAL	SENS.	SEER ¹	EER ²	TOTAL	SENS.	Hi ⁴	HSPF ⁵	Low ⁶		
DZ18TC 0481A* (cont.)	CA*F4961*6D*+TXV	DD80VC1005C*A*	47,000	35,400	17	12.2	43,500	34,800	47,000	9.3	29,000	1,620	6545723
	CA*F4961*6D*+TXV	D*80VC0805C*A*	47,000	35,400	17.5	12.5	43,500	34,800	47,000	9.3	29,000	1,590	6547212
	CA*F4961*6D*+TXV	D*80VC1005C*A*	47,000	35,400	17	12.2	43,500	34,800	47,000	9.3	29,000	1,610	6547213
	CA*F4961*6D*+TXV	D*96VC0804CNA*	47,000	35,400	17	12.5	43,500	34,800	47,000	9	29,000	1,500	7364818
	CA*F4961*6D*+TXV	D*96VC1005CNA*	47,000	35,400	16.5	12	43,500	34,800	47,000	9	29,000	1,530	7364820
	CA*F4961*6D*+TXV	D*96VC1205DNA*	47,000	35,400	17	12.5	43,500	34,800	47,000	9	29,000	1,600	7364822
	CA*F4961*6D*+TXV	D*97MC0804CNA*	47,000	35,400	17	12.5	43,500	34,800	47,000	9	29,000	1,500	7364844
	CA*F4961*6D*+TXV	D*97MC1005CNA*	47,000	35,400	16.5	12	43,500	34,800	47,000	9	29,000	1,530	7364846
	CA*F4961*6D*+TXV	D*96VE1004CNA*	47,000	35,400	16.5	12	43,500	34,800	47,000	9	29,000	1,500	7368783
	CA*F4961*6D*+TXV	D*96VE1205DNA*	47,000	35,400	17	12.5	43,500	34,800	47,000	9	29,000	1,650	7368785
	CHPF4860D6D*+MBVC2000**-1A*+TXV		47,500	35,600	18	13	44,000	35,200	47,500	9.5	29,600	1,750	6545735
	CHPF4860D6D*+TXV	D*80VC0805D*A*	47,000	37,600	17.5	12.5	45,500	36,600	47,000	9.3	29,000	1,500	9949346
	CHPF4860D6D*+TXV	D*80VC0805C*A*	47,000	35,400	17.5	12.5	43,500	34,800	47,000	9.3	29,000	1,590	6547223
	CHPF4860D6D*+TXV	D*80VC1005C*A*	47,000	35,400	17	12.2	43,500	34,800	47,000	9.3	29,000	1,610	6547224
	CHPF4860D6D*+TXV	D*96VC0804CNA*	47,000	35,400	17	12.5	43,500	34,800	47,000	9	29,000	1,500	7364819
	CHPF4860D6D*+TXV	D*96VC1005CNA*	47,000	35,400	16.5	12	43,500	34,800	47,000	9	29,000	1,530	7364821
	CHPF4860D6D*+TXV	D*96VC1205DNA*	47,000	35,400	17	12.5	43,500	34,800	47,000	9	29,000	1,600	7364823
	CHPF4860D6D*+TXV	D*97MC0804CNA*	47,000	35,400	17	12.5	43,500	34,800	47,000	9	29,000	1,500	7364845
	CHPF4860D6D*+TXV	D*97MC1005CNA*	47,000	35,400	16.5	12	43,500	34,800	47,000	9	29,000	1,530	7364847
	CHPF4860D6D*+TXV	D*96VE1004CNA*	47,000	35,400	16.5	12	43,500	34,800	47,000	9	29,000	1,500	7368784
CHPF4860D6D*+TXV	D*96VE1205DNA*	47,000	35,400	17	12.5	43,500	34,800	47,000	9	29,000	1,650	7368786	
DV61PTCD14A*		46,500	35,000	17.5	12	43,000	34,400	47,000	9.5	29,000	1,610	8996316	
DZ18TC 0601A*	CA*F4961*6D*+MBVC2000**-1A*+TXV		56,500	40,000	17	12.6	52,500	41,000	56,500	9.3	35,000	1,800	6545753
	CA*F4961*6D*+TXV	D*80VC0805D*A*	55,500	41,500	16.7	12.0	53,500	40,500	55,500	9.0	34,400	1,700	9949347
	CA*F4961*6D*+TXV	DD80VC0805C*A*	55,500	39,500	16.5	12	51,500	40,000	55,500	9.3	34,400	1,580	6545754
	CA*F4961*6D*+TXV	DD80VC1005C*A*	55,500	39,500	16.5	12	51,500	40,000	56,000	9.3	34,600	1,820	6545755
	CA*F4961*6D*+TXV	D*80VC0805C*A*	55,500	39,500	16.7	12	51,500	40,000	55,500	9.3	34,400	1,590	6547237
	CA*F4961*6D*+TXV	D*80VC1005C*A*	55,500	39,500	16.7	12	51,500	40,000	56,000	9.3	34,600	1,800	6547238
	CA*F4961*6D*+TXV	D*96VC1005CNA*	55,000	39,000	16	12	51,000	40,000	56,000	9	34,000	1,600	7364824
	CA*F4961*6D*+TXV	D*96VC1205DNA*	55,000	39,000	16	12	51,000	40,000	56,000	9	34,000	1,600	7364826
	CA*F4961*6D*+TXV	D*97MC1005CNA*	55,000	39,000	16	12	51,000	40,000	56,000	9	34,000	1,600	7364848
	CA*F4961*6D*+TXV	D*97MC1205DNA*	55,000	39,000	16	12	51,000	40,000	56,000	9	34,000	1,600	7364863
	CA*F4961*6D*+TXV	D*96VE1205DNA*	55,500	39,500	16	12	51,500	40,000	56,000	9	34,000	1,650	7368787
	CHPF4860D6D*+MBVC2000**-1A*+TXV		55,500	39,500	17	12.8	51,500	40,000	55,500	9.3	34,000	1,600	6545759
	CHPF4860D6D*+TXV	D*80VC0805D*A*	55,500	41,500	16.5	12.0	53,500	40,500	55,500	9.0	34,200	1,700	9949348
	CHPF4860D6D*+TXV	D*80VC0805C*A*	55,500	39,500	16.5	12	51,500	40,000	55,500	9.3	34,200	1,590	6547240
	CHPF4860D6D*+TXV	D*80VC1005C*A*	55,000	39,000	16.9	12	51,000	40,000	56,000	9.3	34,400	1,800	6547241

See Notes on Page 22.

OUTDOOR UNIT	INDOOR UNITS		COOLING RATINGS [^]				TVA RATINGS ³		HEATING RATINGS [^]			CFM	AHRI #
	COILS/AIR HANDLERS	FURNACES	TOTAL	SENS.	SEER ¹	EER ²	TOTAL	SENS.	Hi ⁴	HSPF ⁵	Low ⁶		
DZ18TC 0601A* (cont.)	CHPF4860D6D*+TXV	D*96VC1005CNA*	55,000	39,000	15.5	12	51,000	40,000	56,000	9	34,000	1,600	7364825
	CHPF4860D6D*+TXV	D*96VC1205DNA*	55,000	39,000	15.5	12	51,000	40,000	56,000	9	34,000	1,600	7364827
	CHPF4860D6D*+TXV	D*97MC1005CNA*	55,000	39,000	15.5	12	51,000	40,000	56,000	9	34,000	1,600	7364849
	CHPF4860D6D*+TXV	D*97MC1205DNA*	55,000	39,000	15.5	12	51,000	40,000	56,000	9	34,000	1,600	7364864
	CHPF4860D6D*+TXV	D*96VE1205DNA*	55,000	39,000	15.5	12	51,000	40,000	56,000	9	34,000	1,650	7368788
	DV60PTCD14A*		56,000	40,000	16.5	12	52,000	40,500	56,000	9	34,600	1,800	6545752
	DV61PTCD14A*		55,000	39,000	16.5	12.2	51,000	40,000	56,000	9.5	34,600	1,800	8996317

[^] Rated in accordance with ANSI/AHRI Standard 210/240

¹ Seasonal Energy Efficiency Ratio

² Energy Efficiency Ratio @ 80°F/ 67°F/ 95°F

³ TVA Rating: BTU/h @ 75°F/ 63°F - 95°F

⁴ Rated heating capacity at 47°F outdoor per AHRI 210/240

⁵ HSPF = Heating Seasonal Performance Factor

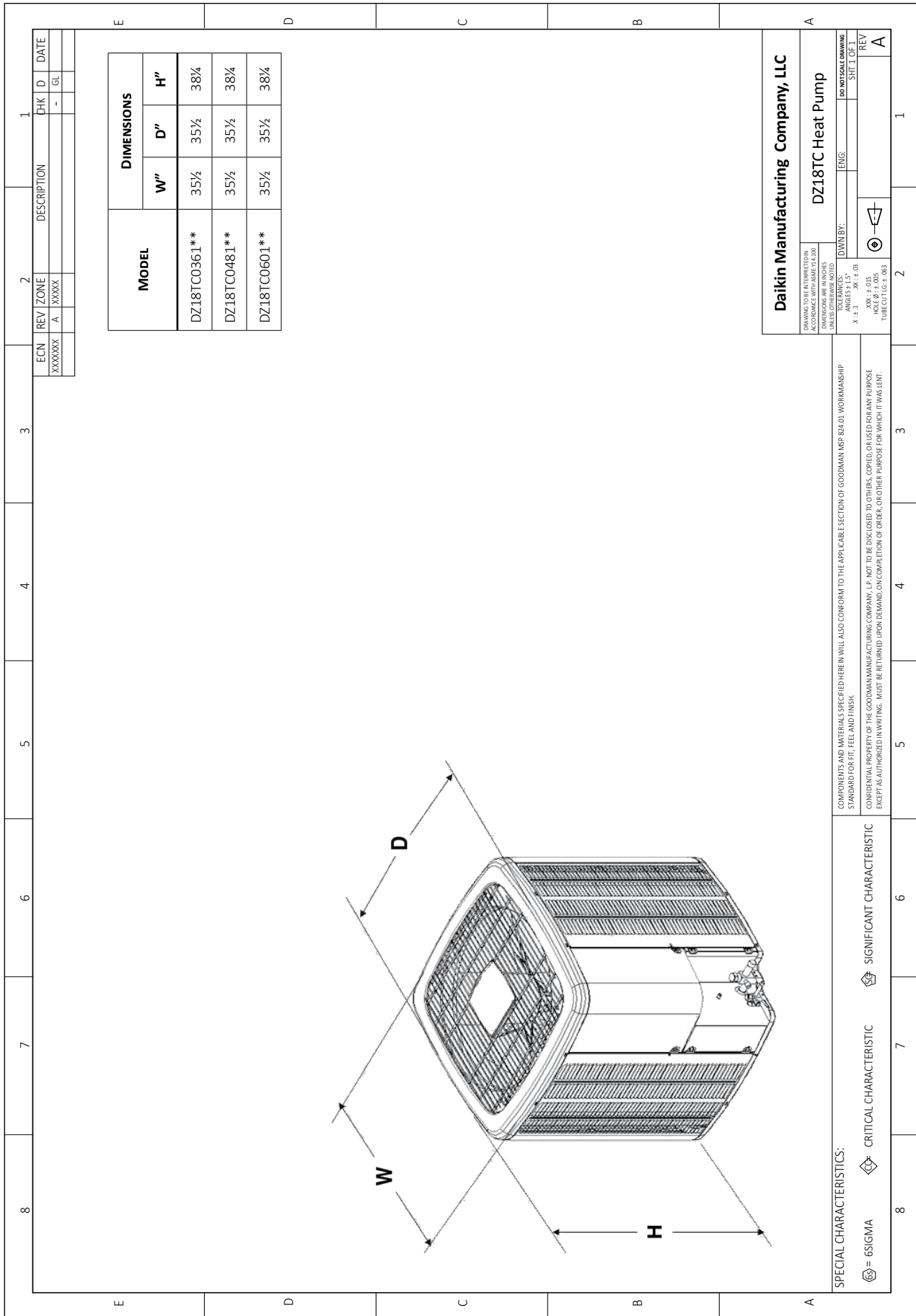
⁶ Heating capacity at 17°F outdoor

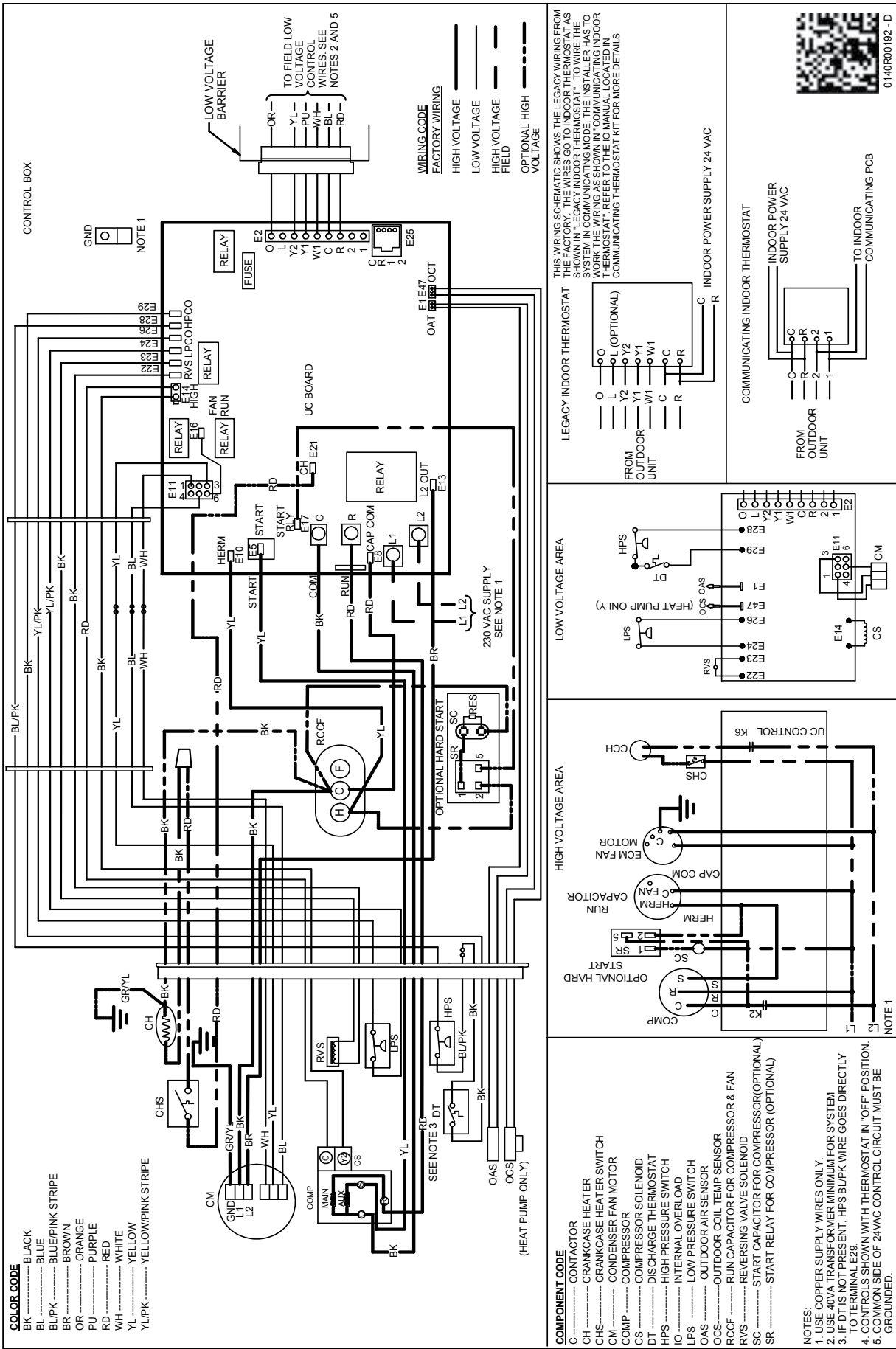
⁷ CFM at High stage

⁸ CFM at Intermediate and low stage

NOTES

- Always check the S&R plate for electrical data on the unit being installed.
- When matching outdoor unit to indoor unit, use the piston supplied with the outdoor unit or that specified on the piston kit chart supplied with the indoor unit.
- EEP - Order from Service Dept. Part No. B13707-38 or new Solid State Board B13707-35S. Part No. B13707-38 is not interchangeable with B13707-35S. The Daikin brand gas furnace contains the EEP cooling time delay.





WARNING

High Voltage: Disconnect all power before servicing or installing this unit. Multiple power sources may be present. Failure to do so may cause property damage, personal injury, or death.

MODEL	DESCRIPTION	DZ18TC 036**	DZ18TC 048**	DZ18TC 060**
ABK-20	Anchor Bracket Kit [◇]	X	X	X
B1141643 ¹	24V Transformer	X	X	X
CSR-U-1	Hard-start Kit	X		
CSR-U-2	Hard-start Kit	X	X	X
CSR-U-3	Hard-start Kit		X	X
FSK01A ²	Freeze Protection Kit	X	X	X
OT18-60A ³	Outdoor Thermostat/Lockout Thermostat	X	X	X
TX3N4 ⁴	TXV Kit	X		
TX5N4 ⁴	TXV Kit		X	X

◇ Contains 20 brackets; four brackets needed to anchor unit to pad

¹ Available in 24V legacy mode only. This feature is integrated in the communicating mode.

² Installed on indoor coil

³ Available in 24V legacy mode only. This feature is integrated in the communicating mode. Required for heat pump applications where ambient temperature falls below 0°F with 50% or higher relative humidity.

⁴ Condensing units and heat pumps with reciprocating compressors require the use of start-assist components when used in conjunction with an indoor coil using a non-bleed thermal expansion valve refrigerant metering device or liquid line solenoid kit. The TXV should always be sized based on the tonnage of the outdoor unit.
